

T7S, R96W, 6th P.M.

WILLIAMS PRODUCTION RMT COMPANY

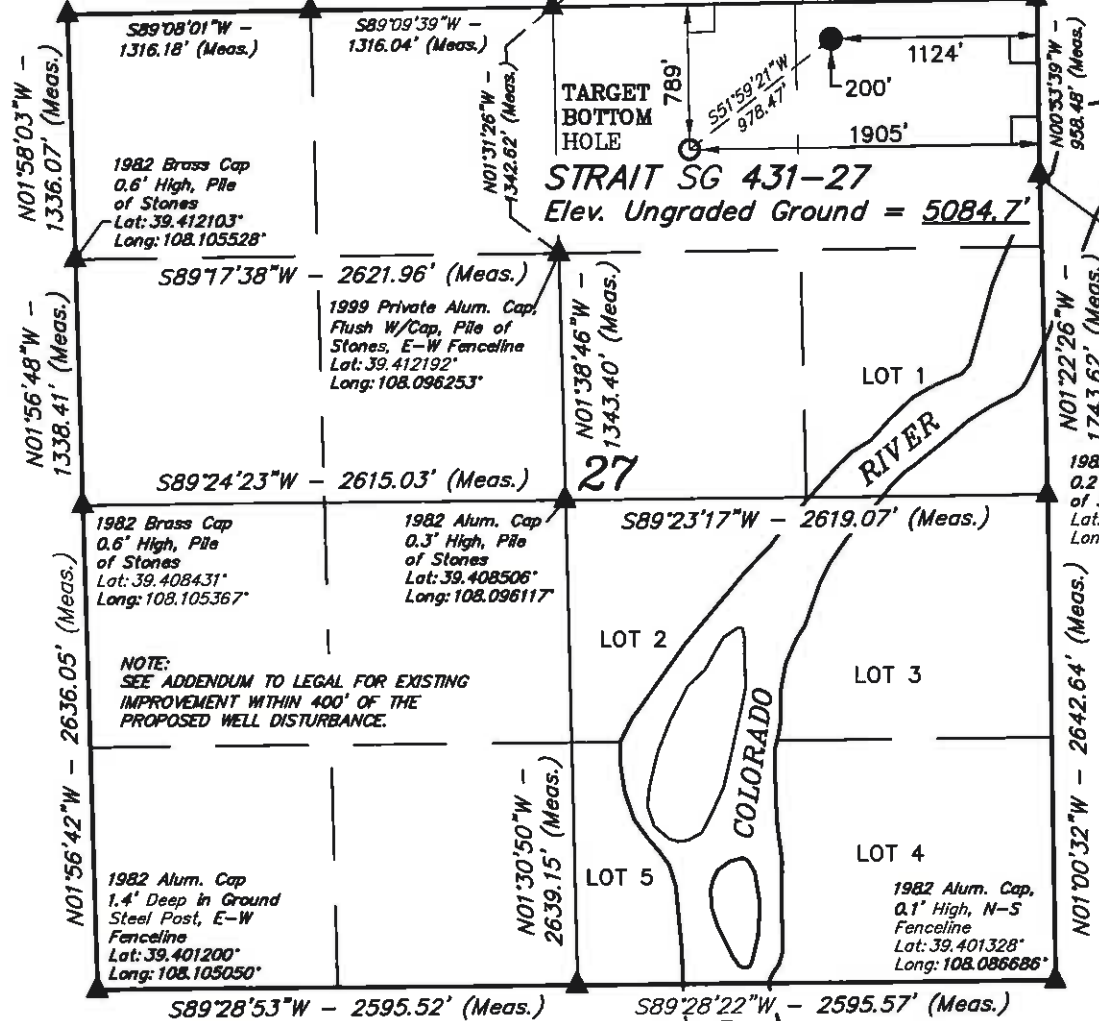
1920, 1982 Brass Cap, 1.0' High, Pile of Stones
Lat: 39.415767°
Long: 108.105689°

1982 Alum. Cap, 0.2' High, Pile of Stones
Lat: 39.415822°
Long: 108.101033°

1982 Alum. Cap, 0.3' High, Pile of Stones
Lat: 39.415861°
Long: 108.096378°

1920 Brass Cap, 1.4' High, Pile of Stones
Lat: 39.415994°
Long: 108.087047°

Well location, STRAIT SG 431-27, located as shown in the NE 1/4 NE 1/4 of Section 27, T7S, R96W, 6th P.M., Garfield County, Colorado.



BASIS OF ELEVATION

SPOT ELEVATION AT THE NORTHWEST CORNER OF SECTION 30, T5S, R95W, 6th P.M. TAKEN FROM THE FORKED GULCH QUADRANGLE, COLORADO, GARFIELD COUNTY, 7.5 MINUTE SERIES (TOPOGRAPHICAL MAP) PUBLISHED BY THE UNITED STATES DEPARTMENT OF THE INTERIOR, GEOLOGICAL SURVEY. SAID ELEVATION IS MARKED AS BEING 5966 FEET.

BASIS OF BEARINGS

BASIS OF BEARINGS IS A G.P.S. OBSERVATION.



PLAT #1

CERTIFICATE

THIS IS TO CERTIFY THAT THE ABOVE PLAT WAS PREPARED FROM FIELD NOTES OF ACTUAL SURVEYS MADE BY ME OR UNDER MY SUPERVISION AND THAT THE SAME ARE TRUE AND CORRECT TO THE BEST OF MY KNOWLEDGE AND BELIEF.

[Signature]
1788
REGISTERED LAND SURVEYOR
REGISTRATION NO. 17492
STATE OF COLORADO

UINTAH ENGINEERING & LAND SURVEYING

85 SOUTH 200 EAST - VERNAL, UTAH 84078

(435) 789-1017

LEGEND:

- = 90° SYMBOL
- = PROPOSED WELL HEAD.
- ▲ = SECTION CORNERS LOCATED.

| | |
|--|--|
| PDOP = 2.0 | |
| NAD 83 (TARGET BOTTOM HOLE) | NAD 83 (SURFACE LOCATION) |
| LATITUDE = 39°24'49.47" (39.413742) | LATITUDE = 39°24'55.43" (39.415397) |
| LONGITUDE = 108°05'37.48" (108.093744) | LONGITUDE = 108°05'27.66" (108.091017) |
| STATE PLANE—(COLO. CENTRAL—NAD 83) | STATE PLANE—(COLO. CENTRAL—NAD 83) |
| N = 1586046.300 | N = 1586826.278 |
| E = 2267288.400 | E = 2268078.055 |

| | | |
|---------------------------|----------------------------|---------------------------------|
| SCALE 1" = 1000' | DATE SURVEYED: 08-24-10 | DATE DRAWN: 08-25-10 |
| PARTY B.H. C.K. D.R.B. | REFERENCES G.L.O. PLAT | |
| WEATHER COOL | FILE | WILLIAMS PRODUCTION RMT COMPANY |