

T7S, R96W, 6th P.M.

WILLIAMS PRODUCTION RMT COMPANY

1920, 1982 Brass Cap, 1.0' High, Pile of Stones
 Lat: 39.415767°
 Long: 108.105689°

1982 Alum. Cap, 0.2' High, Pile of Stones
 Lat: 39.415822°
 Long: 108.101033°

1982 Alum. Cap, 0.3' High, Pile of Stones
 Lat: 39.415861°
 Long: 108.096378°

1920 Brass Cap, 1.4' High, Pile of Stones
 Lat: 39.415994°
 Long: 108.087047°

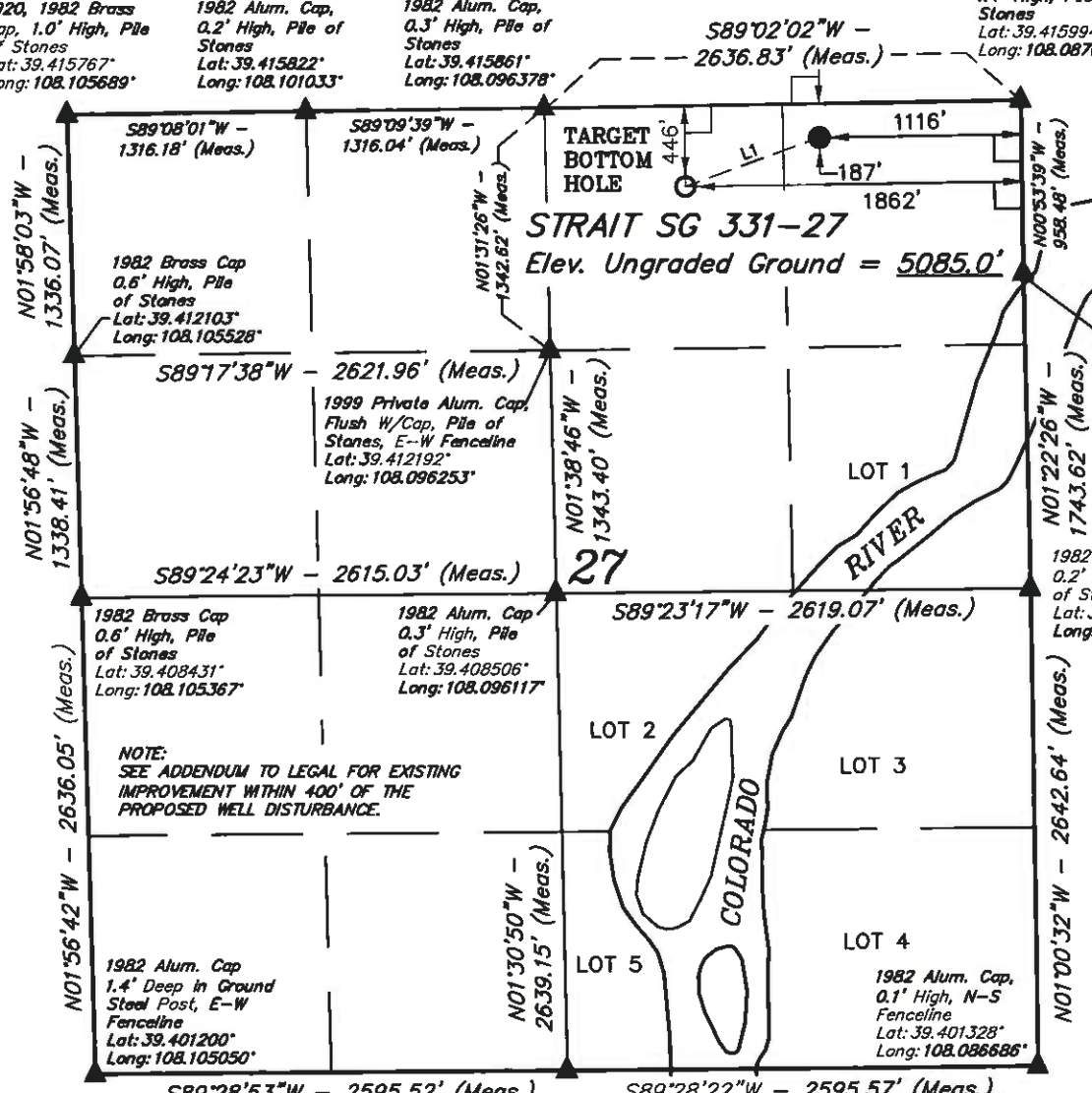
Well location, STRAIT SG 331-27, located as shown in the NE 1/4 NE 1/4 of Section 27, T7S, R96W, 6th P.M., Garfield County, Colorado.

BASIS OF ELEVATION

SPOT ELEVATION AT THE NORTHWEST CORNER OF SECTION 30, T5S, R95W, 6th P.M. TAKEN FROM THE FORKED GULCH QUADRANGLE, COLORADO, GARFIELD COUNTY, 7.5 MINUTE SERIES (TOPOGRAPHICAL MAP) PUBLISHED BY THE UNITED STATES DEPARTMENT OF THE INTERIOR, GEOLOGICAL SURVEY. SAID ELEVATION IS MARKED AS BEING 5966 FEET.

BASIS OF BEARINGS

BASIS OF BEARINGS IS A G.P.S. OBSERVATION.



Alum. Cap, on 5/8" Rebar, Stamped MC Pile of Stones
 Lat: 39.413364°
 Long: 108.086997°

1982 Alum. Cap 0.2' High, Pile of Stones
 Lat: 39.408581°
 Long: 108.086850°

NOTE: SEE ADDENDUM TO LEGAL FOR EXISTING IMPROVEMENT WITHIN 400' OF THE PROPOSED WELL DISTURBANCE.

PLAT #1



CERTIFICATE

THIS IS TO CERTIFY THAT THE ABOVE PLAT WAS PREPARED FROM FIELD NOTES OF ACTUAL SURVEYS MADE BY ME OR UNDER MY SUPERVISION AND THAT THE SAME ARE TRUE AND CORRECT TO THE BEST OF MY KNOWLEDGE AND BELIEF.

Robert L. King
 REGISTERED LAND SURVEYOR
 REGISTRATION NO. 17592
 STATE OF COLORADO

Revised: 12-16-10 D.R.B.

UINTAH ENGINEERING & LAND SURVEYING
 85 SOUTH 200 EAST - VERNAL, UTAH 84078
 (435) 789-1017

LINE TABLE		
LINE	BEARING	LENGTH
L1	S69°50'59"W	789.89'

1982 Brass Cap 0.2' High, E-W Fenceline
 Lat: 39.401264°
 Long: 108.095869°

PDOP = 1.7

LEGEND:

- = 90° SYMBOL
- = PROPOSED WELL HEAD.
- ▲ = SECTION CORNERS LOCATED.

NAD 83 (TARGET BOTTOM HOLE)		NAD 83 (SURFACE LOCATION)	
LATITUDE = 39°24'52.86" (39.414683)	LATITUDE = 39°24'55.55" (39.415431)	LATITUDE = 39°24'55.55" (39.415431)	LATITUDE = 39°24'55.55" (39.415431)
LONGITUDE = 108°05'37.00" (108.093611)	LONGITUDE = 108°05'27.55" (108.090988)	LONGITUDE = 108°05'27.55" (108.090988)	LONGITUDE = 108°05'27.55" (108.090988)
STATE PLANE - (COLO. CENTRAL-NAD 83)		STATE PLANE - (COLO. CENTRAL-NAD 83)	
N = 1586388.200	N = 1586638.819	N = 1586638.819	N = 1586638.819
E = 2267335.600	E = 2268084.401	E = 2268084.401	E = 2268084.401

SCALE 1" = 1000'	DATE SURVEYED: 08-24-10	DATE DRAWN: 08-25-10
PARTY B.H. C.K. D.R.B.	REFERENCES G.L.O. PLAT	
WEATHER COOL	FILE WILLIAMS PRODUCTION RMT COMPANY	