

T7S, R96W, 6th P.M.

WILLIAMS PRODUCTION RMT COMPANY

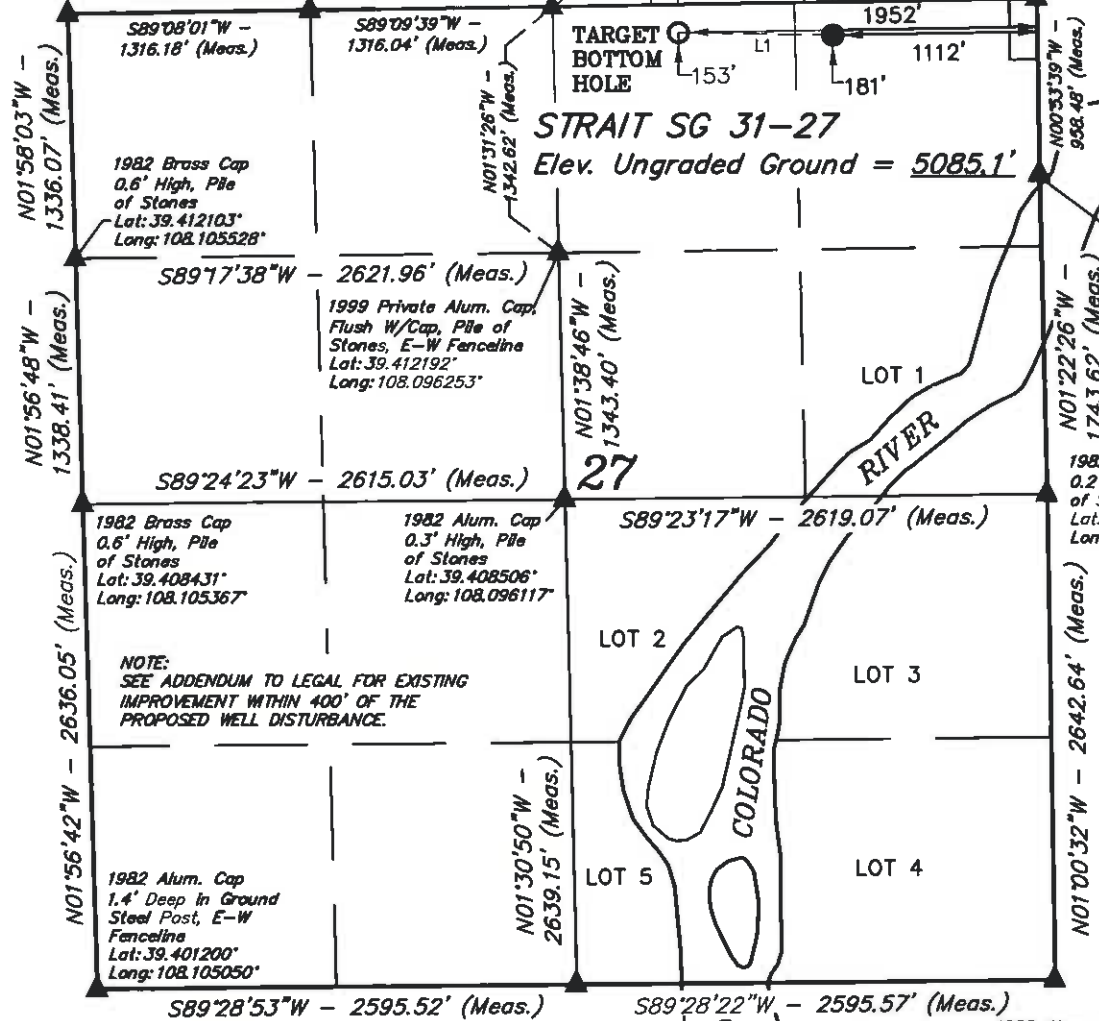
1920, 1982 Brass Cap, 1.0' High, Pile of Stones
Lat: 39.415767°
Long: 108.105689°

1982 Alum. Cap, 0.2' High, Pile of Stones
Lat: 39.415822°
Long: 108.101033°

1982 Alum. Cap, 0.3' High, Pile of Stones
Lat: 39.415861°
Long: 108.096378°

1920 Brass Cap, 1.4' High, Pile of Stones
Lat: 39.415994°
Long: 108.087047°

Well location, STRAIT SG 31-27, located as shown in the NE 1/4 NE 1/4 of Section 27, T7S, R96W, 6th P.M., Garfield County, Colorado.



BASIS OF ELEVATION

SPOT ELEVATION AT THE NORTHWEST CORNER OF SECTION 30, T5S, R95W, 6th P.M. TAKEN FROM THE FORKED GULCH QUADRANGLE, COLORADO, GARFIELD COUNTY, 7.5 MINUTE SERIES (TOPOGRAPHICAL MAP) PUBLISHED BY THE UNITED STATES DEPARTMENT OF THE INTERIOR, GEOLOGICAL SURVEY. SAID ELEVATION IS MARKED AS BEING 5966 FEET.

BASIS OF BEARINGS

BASIS OF BEARINGS IS A G.P.S. OBSERVATION.



NOTE: SEE ADDENDUM TO LEGAL FOR EXISTING IMPROVEMENT WITHIN 400' OF THE PROPOSED WELL DISTURBANCE.

CERTIFICATE

THIS IS TO CERTIFY THAT THE ABOVE PLAT WAS PREPARED FROM FIELD NOTES OF ACTUAL SURVEYS MADE BY ME OR UNDER MY SUPERVISION AND THAT THE SAME ARE TRUE AND CORRECT TO THE BEST OF MY KNOWLEDGE AND BELIEF.

[Signature]
REGISTERED LAND SURVEYOR
REGISTRATION NUMBER 17992
STATE OF COLORADO

LINE TABLE		
LINE	BEARING	LENGTH
L1	N89°03'43"W	840.47'

1982 Brass Cap, 0.2' High, E-W Fenceline
Lat: 39.401264°
Long: 108.095869°

1982 Alum. Cap, 0.1' High, N-S Fenceline
Lat: 39.401328°
Long: 108.086686°

UINTAH ENGINEERING & LAND SURVEYING

85 SOUTH 200 EAST - VERNAL, UTAH 84078

(435) 789-1017

LEGEND: ◻ = 90° SYMBOL ● = PROPOSED WELL HEAD. ▲ = SECTION CORNERS LOCATED.	NAD 83 (TARGET BOTTOM HOLE) LATITUDE = 39°24'55.75" (39.415486) LONGITUDE = 108°05'38.21" (108.093947)		NAD 83 (SURFACE LOCATION) LATITUDE = 39°24'55.62" (39.415450) LONGITUDE = 108°05'27.51" (108.090975)		SCALE 1" = 1000'	DATE SURVEYED: 08-24-10	DATE DRAWN: 08-25-10
	STATE PLANE-(COLO. CENTRAL-NAD 83) N = 1586683.000 E = 2267249.100		STATE PLANE-(COLO. CENTRAL-NAD 83) N = 1586645.131 E = 2268088.440		PARTY B.H. C.K. D.R.B.	REFERENCES G.L.O. PLAT	
PDOP = 1.2				WEATHER COOL		FILE WILLIAMS PRODUCTION RMT COMPANY	