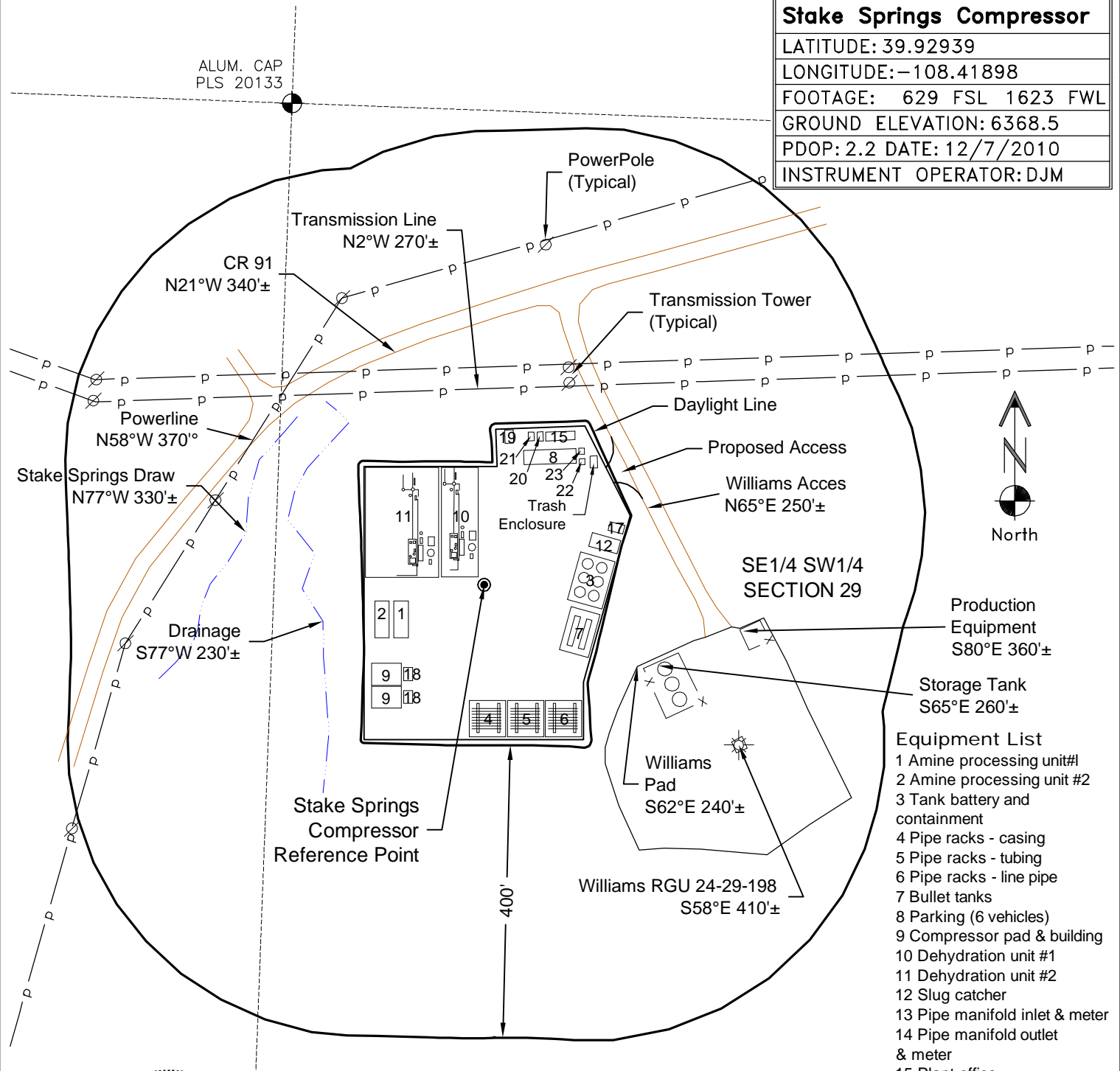
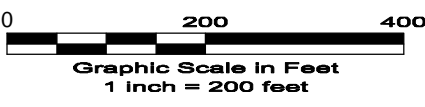


# LOCATION DRAWING

<b>Stake Springs Compressor</b>
LATITUDE: 39.92939
LONGITUDE: -108.41898
FOOTAGE: 629 FSL 1623 FWL
GROUND ELEVATION: 6368.5
PDOP: 2.2 DATE: 12/7/2010
INSTRUMENT OPERATOR: DJM



- Equipment List**
- 1 Amine processing unit#1
  - 2 Amine processing unit #2
  - 3 Tank battery and containment
  - 4 Pipe racks - casing
  - 5 Pipe racks - tubing
  - 6 Pipe racks - line pipe
  - 7 Bullet tanks
  - 8 Parking (6 vehicles)
  - 9 Compressor pad & building
  - 10 Dehydration unit #1
  - 11 Dehydration unit #2
  - 12 Slug catcher
  - 13 Pipe manifold inlet & meter
  - 14 Pipe manifold outlet & meter
  - 15 Plant office
  - 16 Cooler clearance
  - 17 Pig receiver
  - 18 Cooler
  - 19 Generator & Panel
  - 20 Potable water tank
  - 21 Port-o-let
  - 22 Electrical building
  - 23 Scada building



1 OF 7 1/20/11

**GEO SURV**

LAND SURVEYING AND MAPPING  
LAFAYETTE - WINTER PARK  
Ph 303 666 0379 Fx 303 665 6320

**MESA ENERGY PARTNERS, LLC**  
**STAKE SPRINGS COMPRESSOR**

SE1/4 SW1/4 SEC. 29 T1S R98W  
6th PM RIO BLANCO COUNTY COLORADO

DWG: G:\GEO SURV\2010\10022\MEP\_Compressor\Stake Springs Compressor FZA.dwg USER: MTC DATE: Jan 20, 2011 11:27am