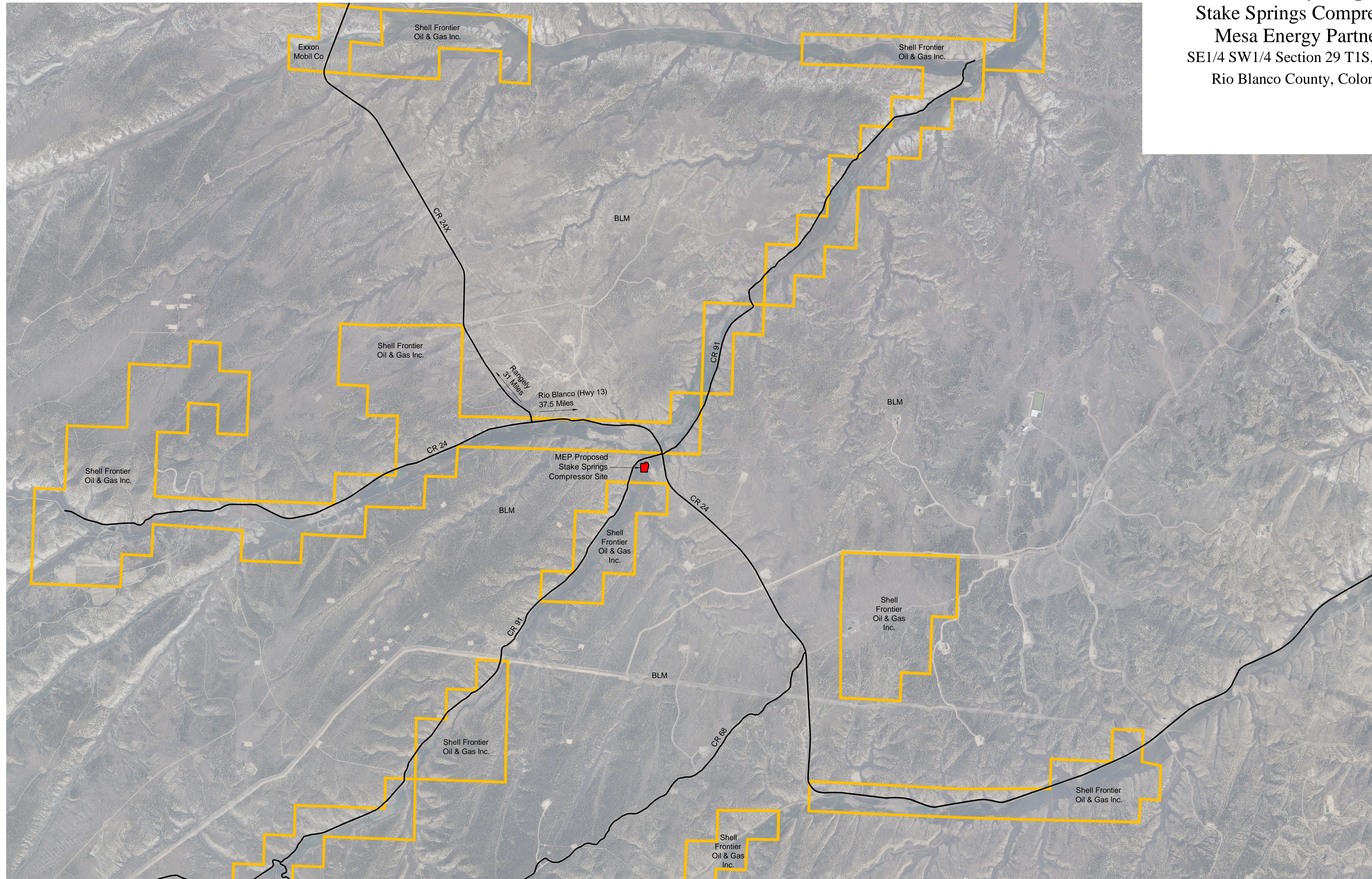
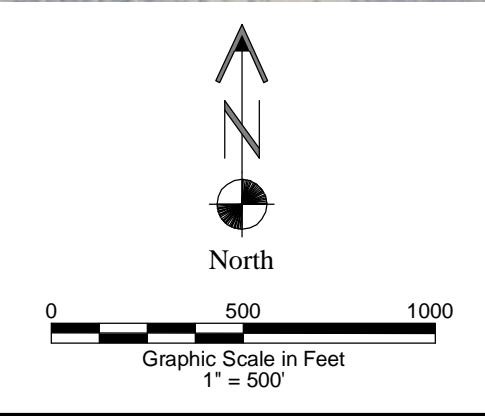
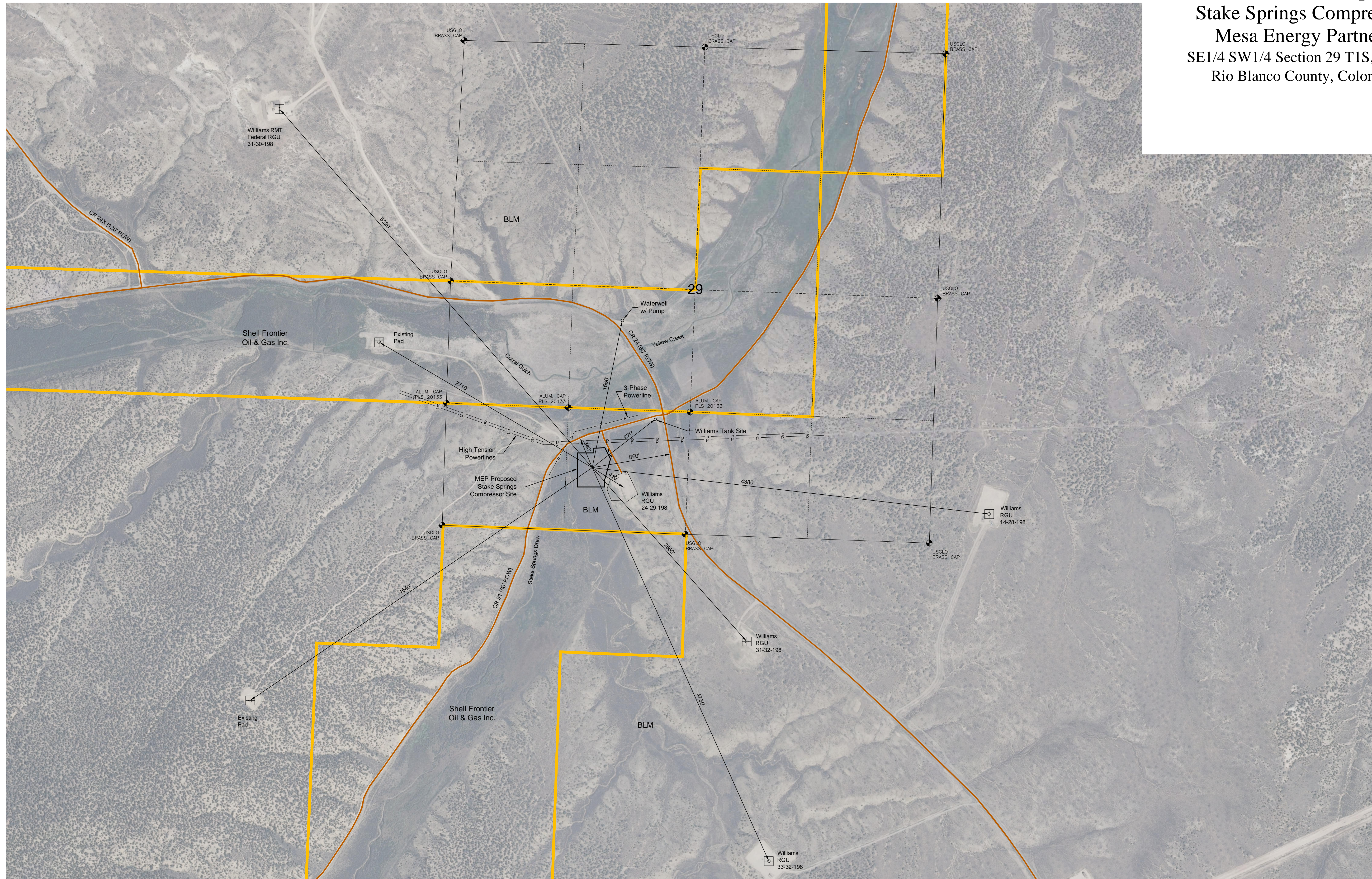


Vicinity Map
 Stake Springs Compressor
 Mesa Energy Partners
 SE1/4 SW1/4 Section 29 T1S, R98W
 Rio Blanco County, Colorado



Location Map
 Stake Springs Compressor
 Mesa Energy Partners
 SE1/4 SW1/4 Section 29 T1S, R98W
 Rio Blanco County, Colorado



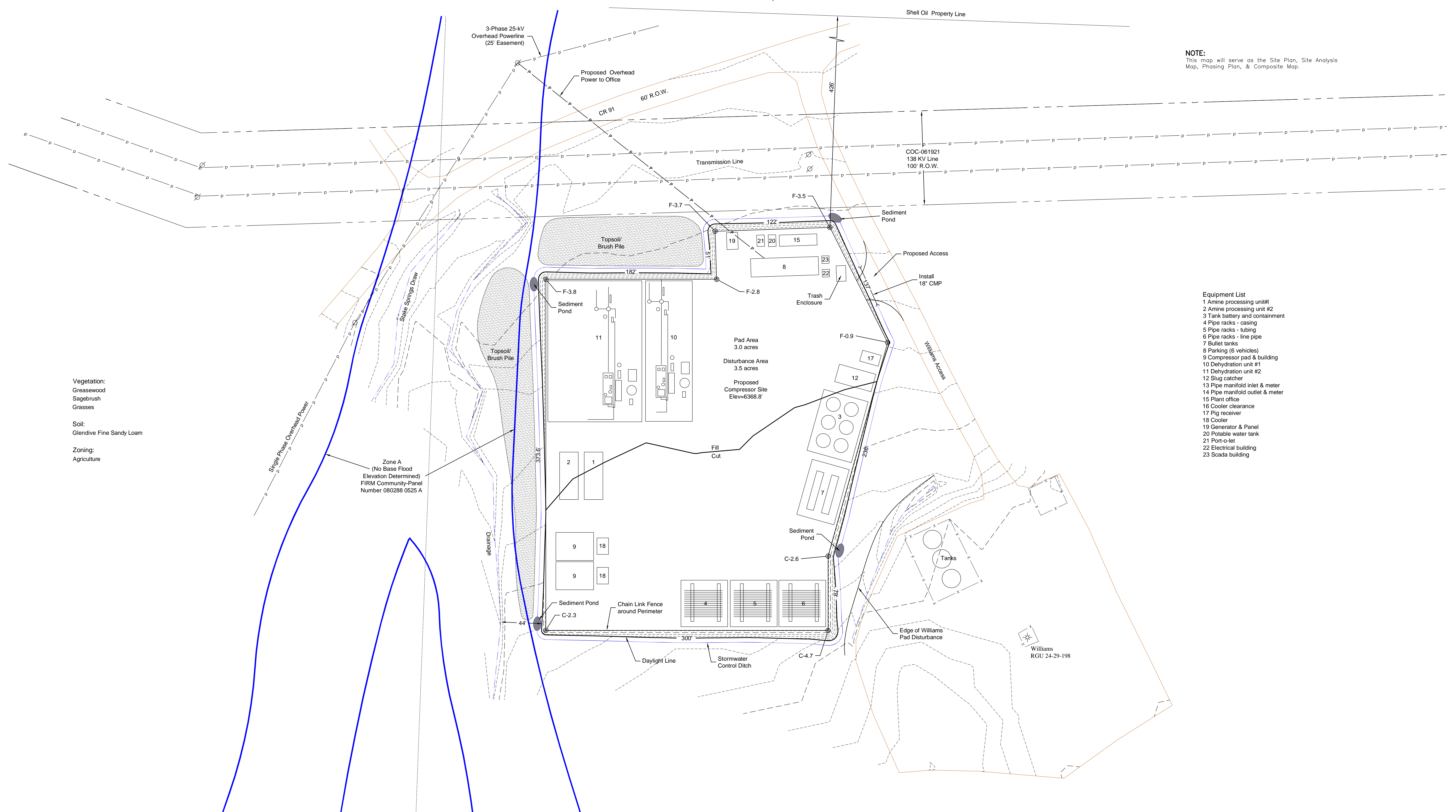
Site Plan

Stake Springs Compressor

Mesa Energy Partners

SE1/4 SW1/4 Section 29 T1S, R98W
Rio Blanco County, Colorado

NOTE:
This map will serve as the Site Plan, Site Analysis Map, Phasing Plan, & Composite Map.



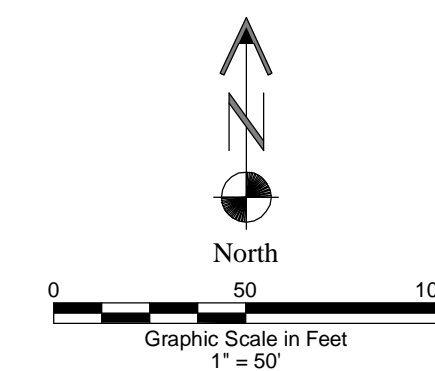
Vegetation:
Greenswood
Sagebrush
Grasses

Soil:
Glendive Fine Sandy Loam

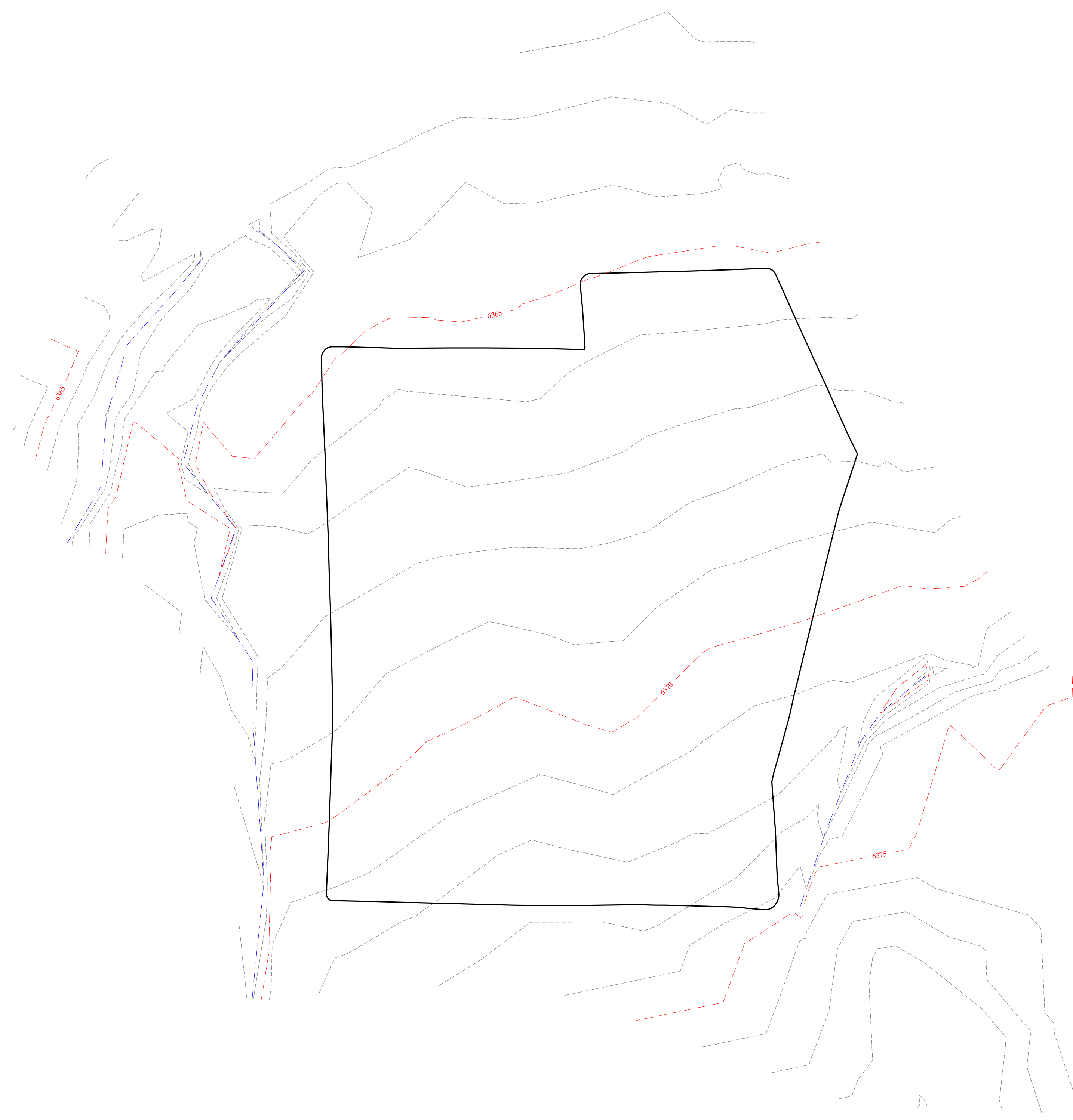
Zoning:
Agriculture

Zone A
(No Base Flood
Elevation Determined)
FIRM Community-Panel
Number 080288 0525 A

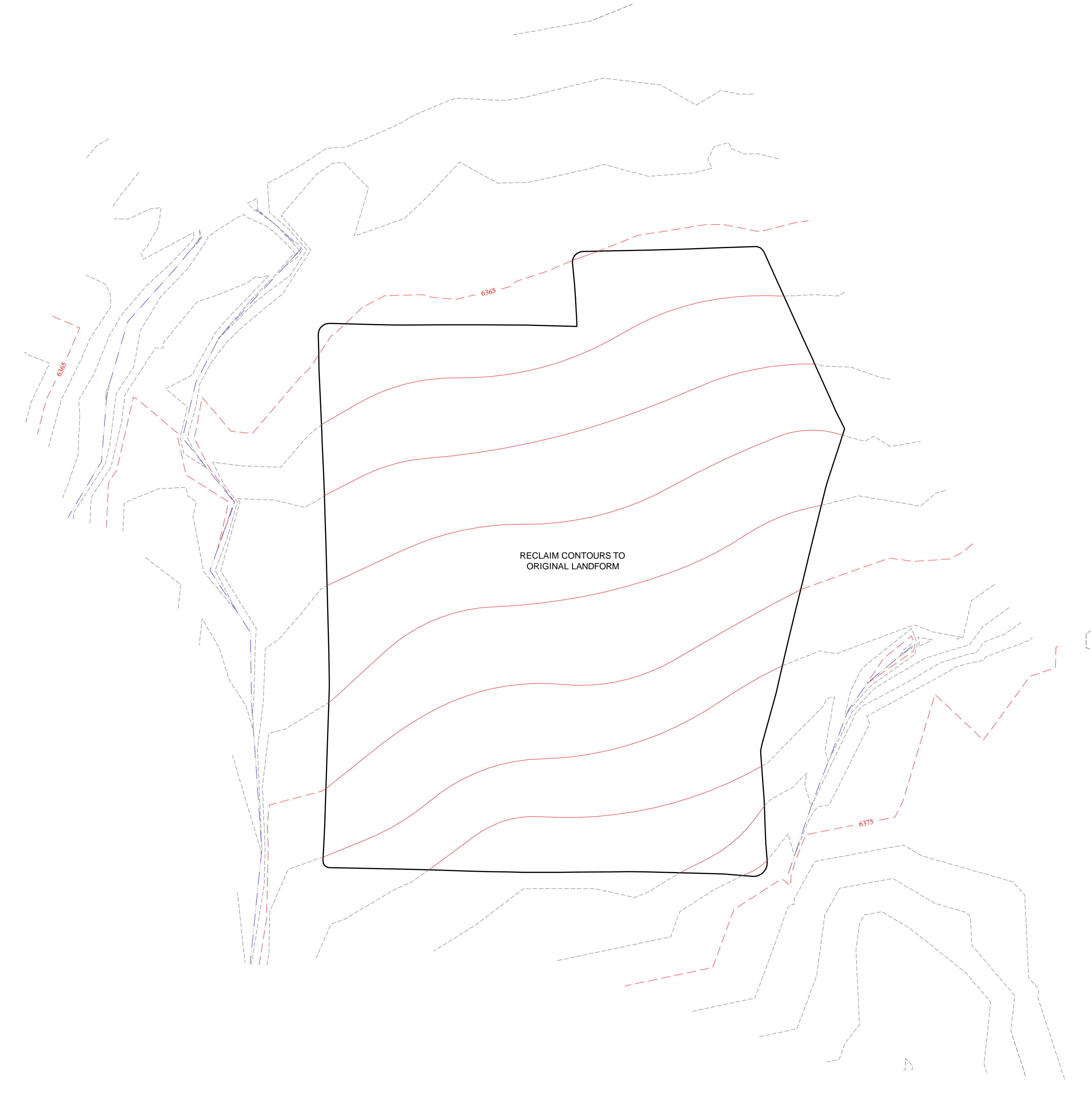
- Equipment List**
- 1 Amine processing unit#1
 - 2 Amine processing unit #2
 - 3 Tank battery and containment
 - 4 Pipe racks - casing
 - 5 Pipe racks - tubing
 - 6 Pipe racks - line pipe
 - 7 Bullet tanks
 - 8 Parking (6 vehicles)
 - 9 Compressor pad & building
 - 10 Dehydration unit #1
 - 11 Dehydration unit #2
 - 12 Slug catcher
 - 13 Pipe manifold inlet & meter
 - 14 Pipe manifold outlet & meter
 - 15 Plant office
 - 16 Cooler clearance
 - 17 Pig receiver
 - 18 Cooler
 - 19 Generator & Panel
 - 20 Potable water tank
 - 21 Port-o-let
 - 22 Electrical building
 - 23 Scada building



Reclamation Drawing
Stake Springs Compressor
Mesa Energy Partners
SE1/4 SW1/4 Section 29 T1S, R98W
Rio Blanco County, Colorado

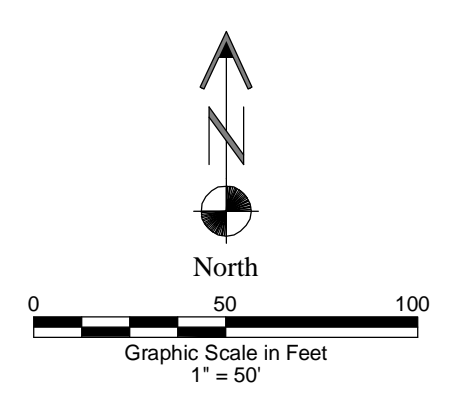


ORIGINAL CONTOURS



RECLAIMED CONTOURS

RECLAIM CONTOURS TO
ORIGINAL LANDFORM



Emergency Response Map
 Stake Springs Compressor
 Mesa Energy Partners
 SE1/4 SW1/4 Section 29 T1S, R98W
 Rio Blanco County, Colorado

