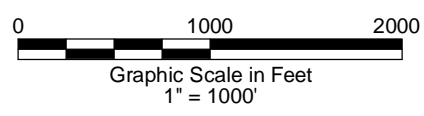
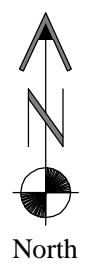


SHEET: 1 OF 3

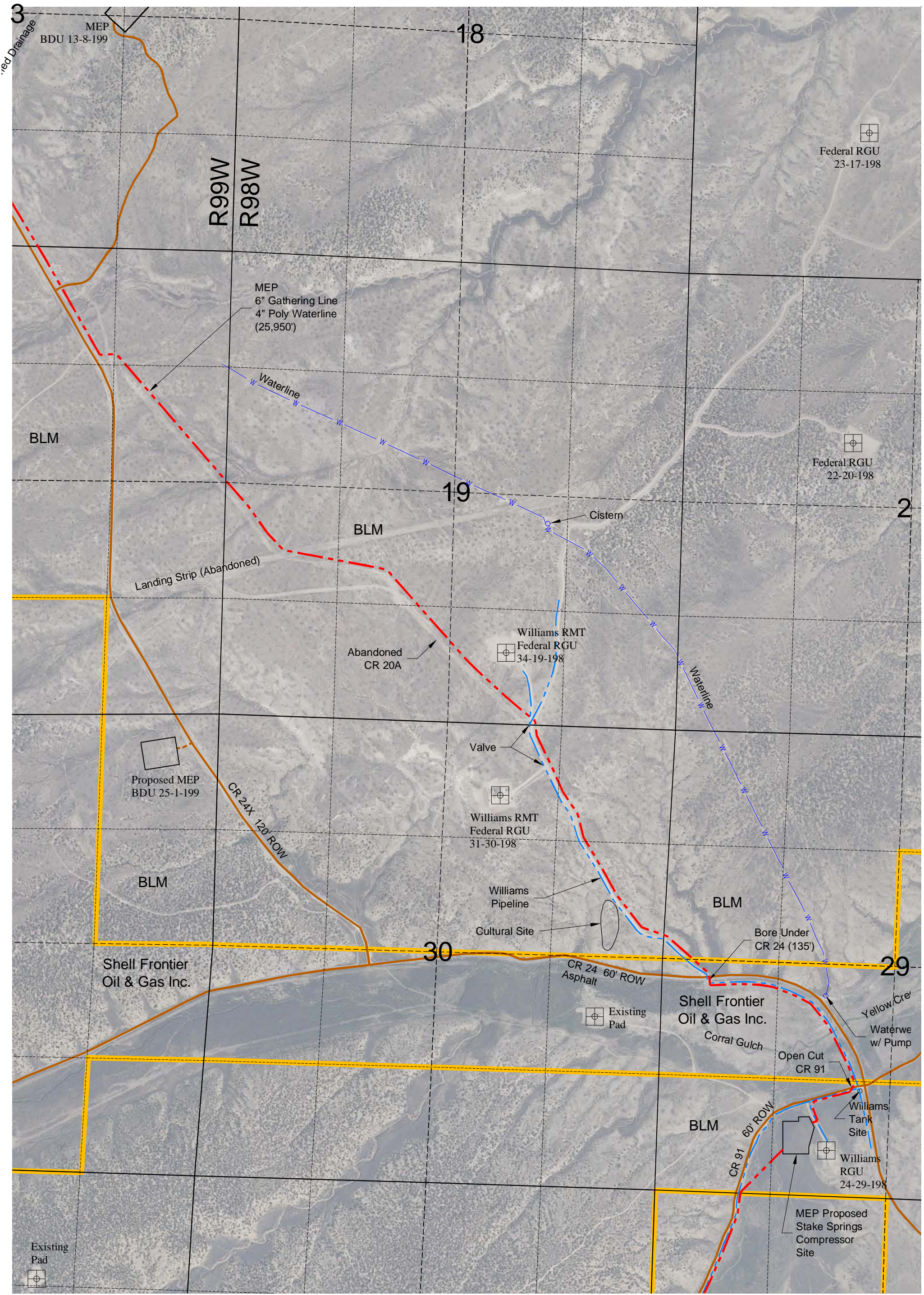


Mesa Energy Partners  
 Preliminary Pipeline Route  
 T1S, R98W & R99W  
 T2S, R98W & R99W  
 Rio Blanco County, Colorado

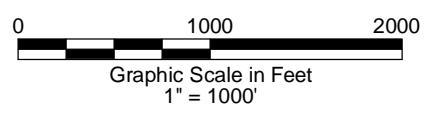


**GEOSURV**  
 LAND SURVEYING AND MAPPING  
 LAFAYETTE - WINTER PARK  
 Ph 303 666 0379 Fx 303 665 6320

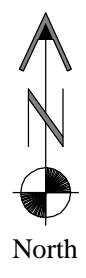
DWG: G:\GEOSURV\2010\10022\Pipelines\Stake Springs Gathering Pipeline.dwg  
 USER: MTC DATE: Dec 21, 2010 4:39pm  
 XREFS: Rio Blanco GCDB IMAGES: C01Ax\_Sht 1.jpg Pipeline.tif Starks Pipelines.JPG



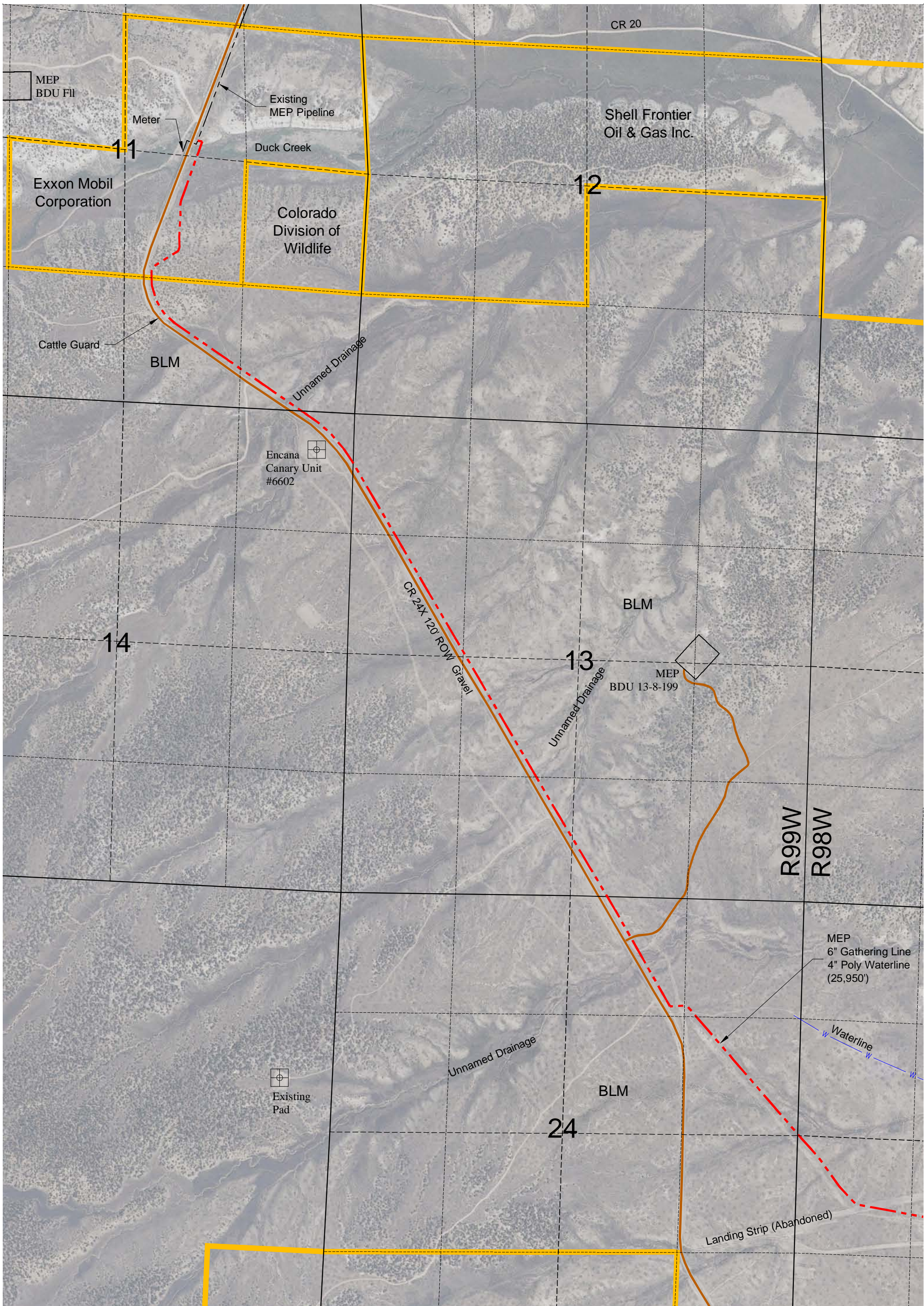
SHEET: 2 OF 3



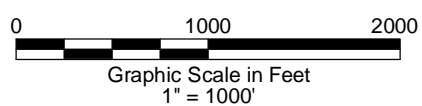
Mesa Energy Partners  
 Preliminary Pipeline Route  
 T1S, R98W & R99W  
 T2S, R98W & R99W  
 Rio Blanco County, Colorado



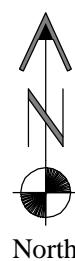
DWG: G:\GEO SURV\2010\10022\Pipelines\Stake Springs Gathering Pipeline.dwg  
 USER: MTC DATE: Dec 21, 2010 4:40pm  
 XREFS: Rio Blanco GCDB IMAGES: C01Ax\_Sht 1.jpg Pipeline.tif Starks Pipelines.JPG



SHEET: 3 OF 3



Mesa Energy Partners  
 Preliminary Pipeline Route  
 T1S, R98W & R99W  
 T2S, R98W & R99W  
 Rio Blanco County, Colorado



LAND SURVEYING AND MAPPING  
 LAFAYETTE - WINTER PARK  
 Ph 303 666 0379 Fx 303 665 6320

DWG: G:\GEOSURV\2010\10022\Pipelines\Stake Springs Gathering Pipeline.dwg  
 USER: MTC DATE: Dec 21, 2010 4:41pm  
 XREFS: Rio Blanco GCDB IMAGES: C01Ax\_Sht 1.jpg Pipeline.tif Starks Pipelines.JPG