

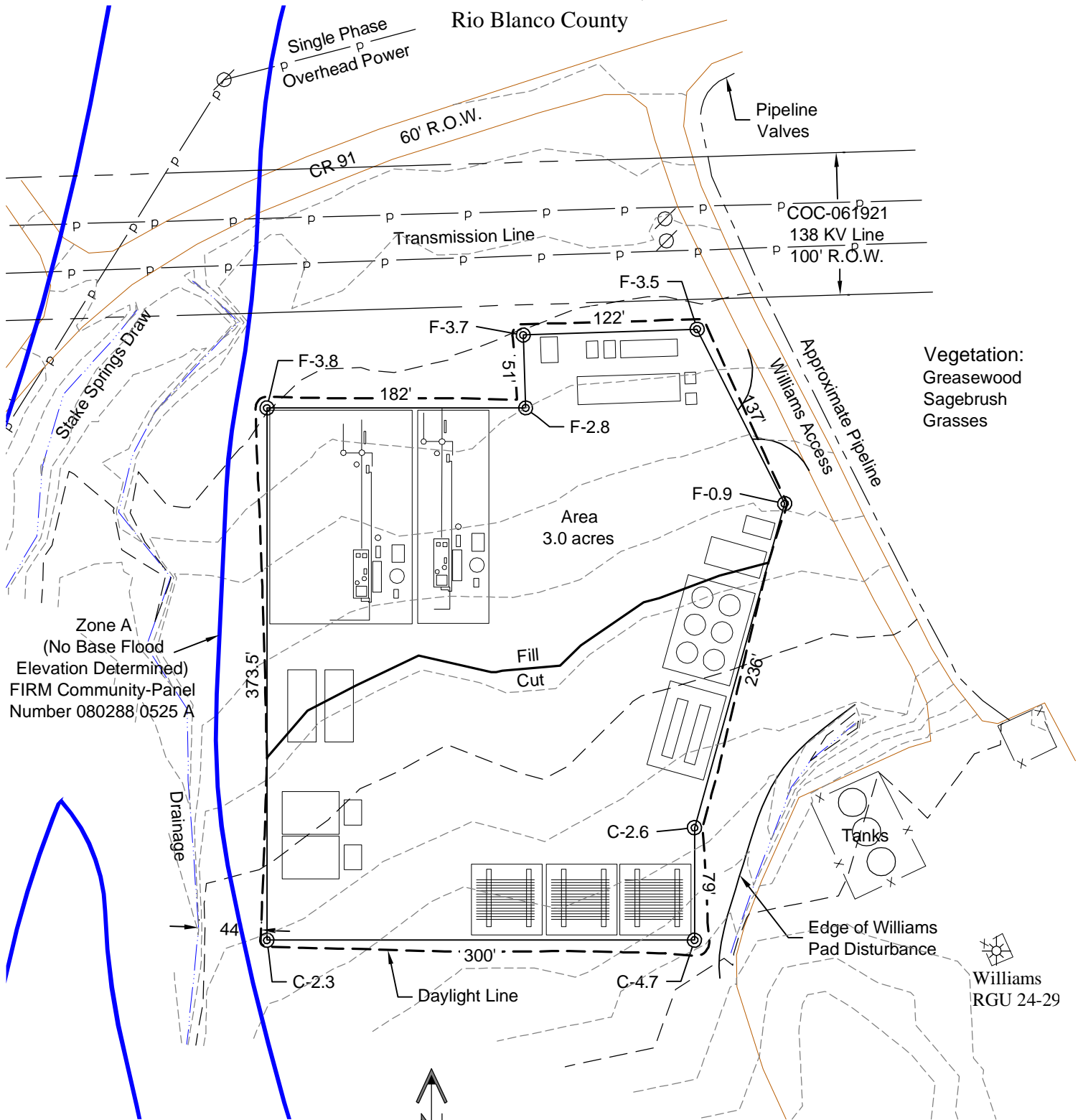
Stake Springs Compressor & Water Handling Site

Preliminary Layout

Mesa Energy Partners

SE1/4 SW1/4 Section 29 T1S, R98W

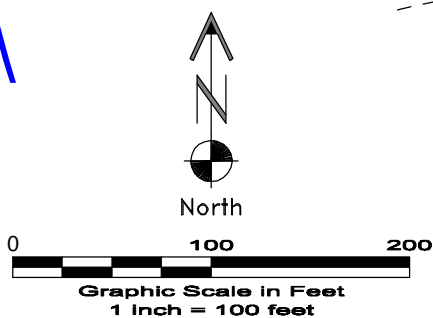
Rio Blanco County



Vegetation:
Greasewood
Sagebrush
Grasses

Zone A
(No Base Flood
Elevation Determined)
FIRM Community-Panel
Number 080288 0525 A

DWG: G:\GEO SURV 2010\10022\MEP-Compressor\Stake Springs Compressor.dwg USER: MTC DATE: Dec 09, 2010 3:30pm



12/9/10

GEO SURV
LAND SURVEYING AND MAPPING
LAFAYETTE - WINTER PARK
Ph 303 666 0379 Fx 303 665 6320