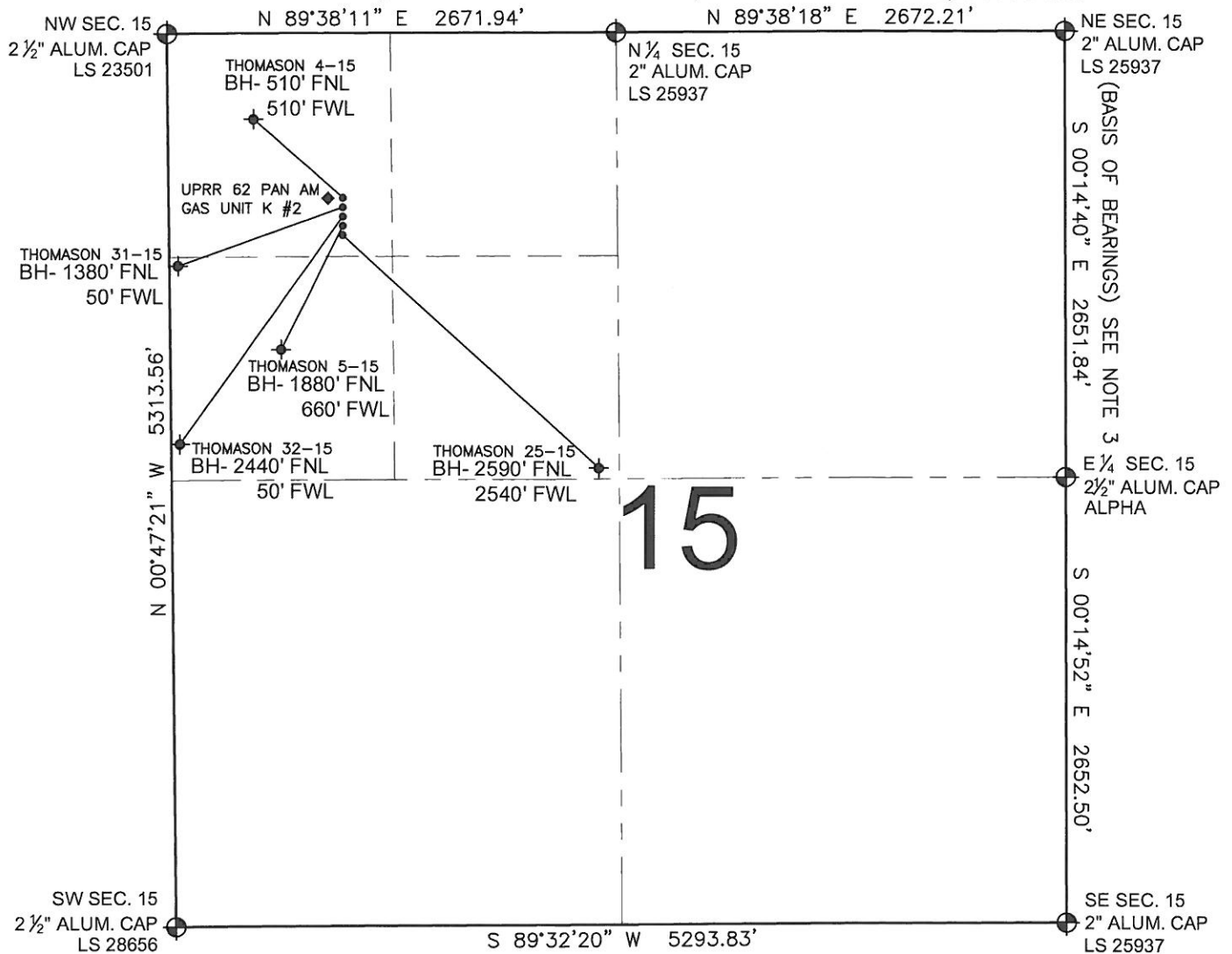


PAD DRAWING - THOMASON 5 PAD

SECTION 15, TOWNSHIP 2 NORTH, RANGE 65 WEST, 6TH P.M.



LEGEND

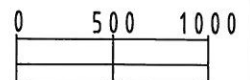
- = EXISTING MONUMENT = BOTTOM HOLE BH= BOTTOM HOLE
 = PROPOSED WELL = EXISTING WELL

NOTES:

- THIS SURVEY WAS DONE BY GPS METHODS AND CONFORMS TO THE MINIMUM STANDARDS SET BY THE C.O.G.C.C., RULE NO. 215
- ELEVATIONS SHOWN AT THE WELL HEAD, AS WELL AS HORIZONTAL CONTROL, ARE BASED ON GPS-RTK VALUES DERIVED FROM DOING 2-HOUR STATIC GPS SESSIONS AND REDUCTIONS USING O.P.U.S. SOLUTIONS.
VERTICAL = NAVD88; HORIZONTAL = NAD83/92
- THE BEARINGS SHOWN HEREON ARE BASED ON GPS OBSERVATIONS BETWEEN THE MONUMENTS SHOWN HEREON AS FOUND ON THE FIELD DATE BELOW.
- DISTANCES SHOWN ARE AT GROUND LEVEL, AS MEASURED IN THE FIELD, WITH TIES TO WELLS MEASURED AT A PERPENDICULAR TO SECTION LINES.

NOTES:

THOMASON 25-15 TO BE AT 1043' FNL, 1041' FWL.
 BOTTOM HOLE AT 2590' FNL & 2540' FWL.
 THOMASON 5-15 TO BE AT 1027' FNL, 1041' FWL.
 BOTTOM HOLE AT 1880' FNL & 660' FWL.
 THOMASON 32-15 TO BE AT 1011' FNL, 1041' FWL.
 BOTTOM HOLE AT 2440' FNL & 50' FWL.
 THOMASON 31-15 TO BE AT 995' FNL, 1041' FWL.
 BOTTOM HOLE AT 1380' FNL & 50' FWL.
 THOMASON 4-15 TO BE AT 979' FNL, 1041' FWL.
 BOTTOM HOLE AT 510' FNL & 510' FWL.
 UPRR 62 PAN AM GAS UNIT K #2 IS 979' FNL, 991' FWL.



SCALE: 1"=1000'

REVISIONS

INITIAL DATE

PREPARED BY:

PFS

Petroleum Field Services, LLC
1801 W. 13th Ave.
Denver, CO 80204



KERR-MCGEE OIL & GAS ONSHORE LP

FIELD DATE:
08-17-10

DRAWING DATE:
08-19-10

BY:
SMF

PAD NAME:
THOMASON 5 PAD

SURFACE LOCATION:

WELD COUNTY, COLORADO
NW 1/4 NW 1/4, SEC. 15, T2N, R65W