

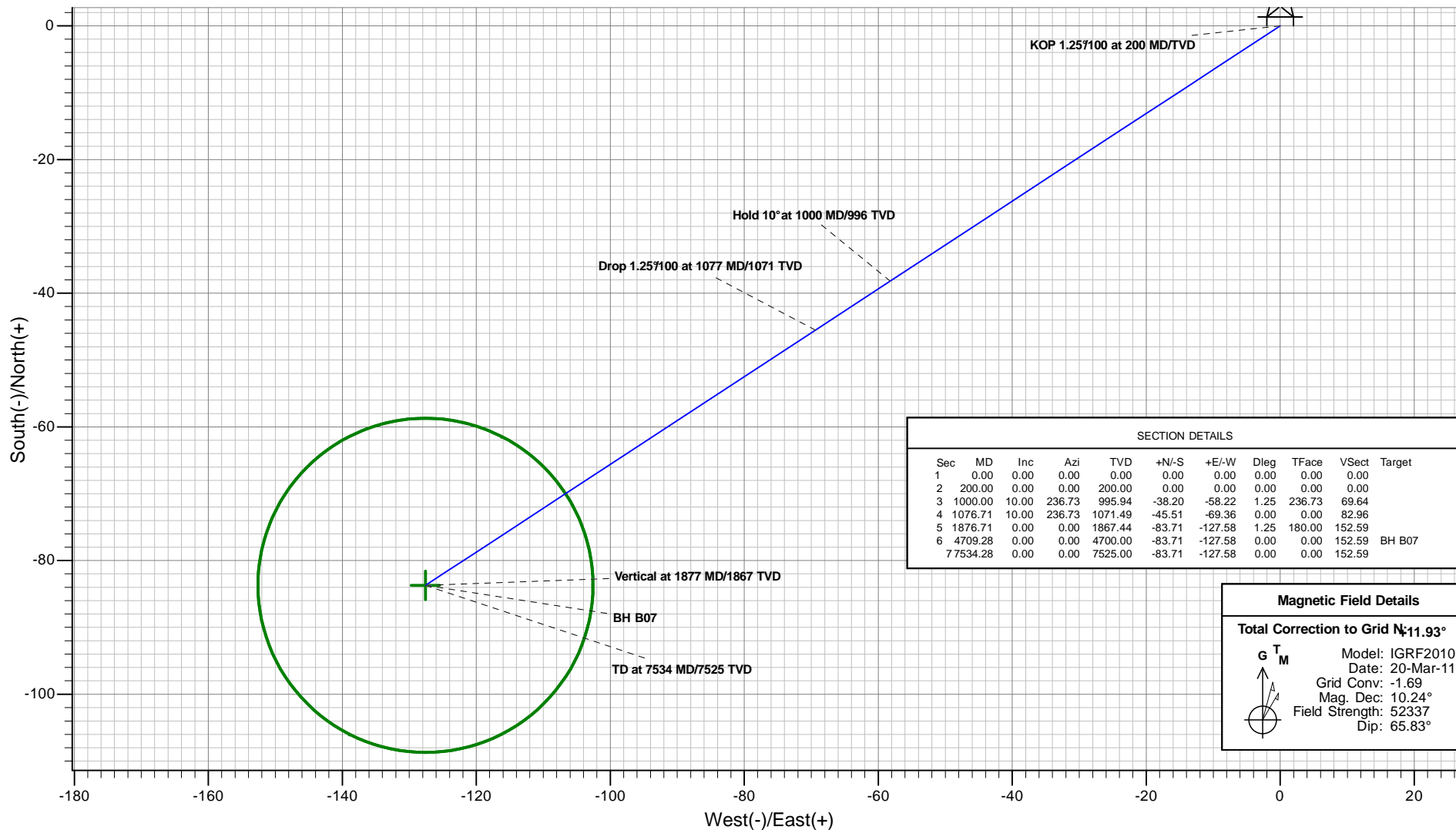


**PLAN VIEW**

**Antero Resources**  
**Antero Dixon B07 (111308)**



Project: Dixon (NAD 83)  
 Site: Dixon B  
 Well: Antero Dixon B07 (111308)  
 Wellbore: Antero Dixon B07  
 Design: Antero Dixon B07 P01



SECTION DETAILS										
Sec	MD	Inc	Azi	TVD	+N/-S	+E/-W	Dleg	TFace	Vsect	Target
1	0.00	0.00	0.00	0.00	0.00	0.00	0.00	0.00	0.00	
2	200.00	0.00	0.00	200.00	0.00	0.00	0.00	0.00	0.00	
3	1000.00	10.00	236.73	995.94	-38.20	-58.22	1.25	236.73	69.64	
4	1076.71	10.00	236.73	1071.49	-45.51	-69.36	0.00	0.00	82.96	
5	1876.71	0.00	0.00	1867.44	-83.71	-127.58	1.25	180.00	152.59	
6	4709.28	0.00	0.00	4700.00	-83.71	-127.58	0.00	0.00	152.59	BH B07
7	7534.28	0.00	0.00	7525.00	-83.71	-127.58	0.00	0.00	152.59	

**Magnetic Field Details**

**Total Correction to Grid North: 11.93°**

Model: IGRF2010  
 Date: 20-Mar-11  
 Grid Conv: -1.69  
 Mag. Dec: 10.24°  
 Field Strength: 52337  
 Dip: 65.83°

Plan: Antero Dixon B07 P01  
 Created By: ARK Directional Services  
 Date: 14:28, January 18 2011

PROJECT DETAILS: Dixon (NAD 83)

Geodetic System: Universal Transverse Mercator  
 Datum: North American Datum 1983  
 Ellipsoid: GRS 1980  
 Zone: Zone 13N (108 W to 102 W)  
 System Datum: Mean Sea Level

REFERENCE INFORMATION

Co-ordinate (N/E) Reference: Well Antero Dixon B07 (111308) - Slot B07, Grid North  
 Vertical (TVD) Reference: KB @ 5544.00ft  
 Section (VS) Reference: Slot - B07(0.00N, 0.00E)  
 Measured Depth Reference: KB @ 5544.00ft  
 Calculation Method: Minimum Curvature

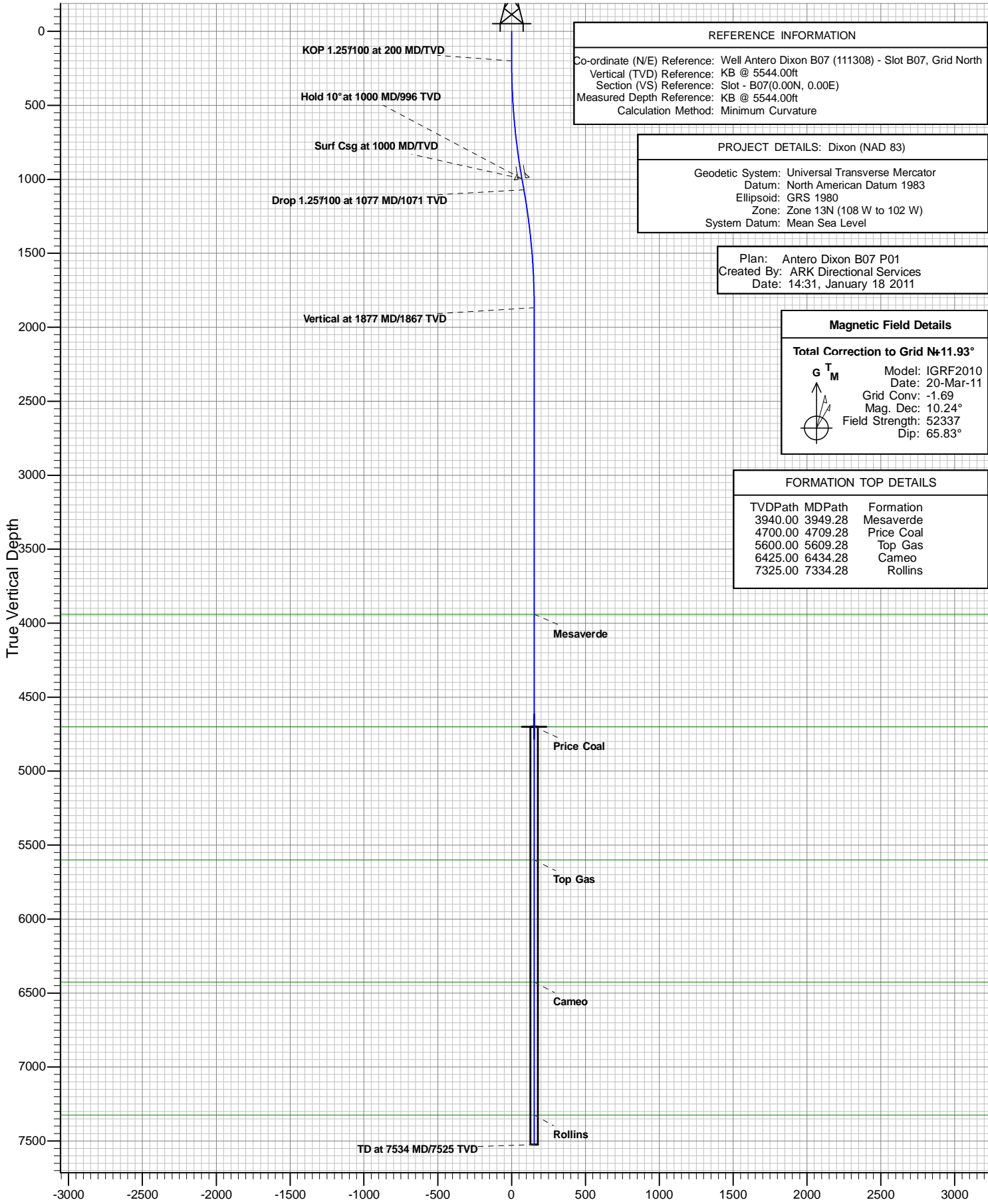


# Antero Resources



Antero Dixon B07 (111308)

## VERTICAL SECTION VIEW



REFERENCE INFORMATION	
Co-ordinate (N/E) Reference:	Well Antero Dixon B07 (111308) - Slot B07, Grid North
Vertical (TVD) Reference:	KB @ 5544.00ft
Section (VS) Reference:	Slot - B07(0.00N, 0.00E)
Measured Depth Reference:	KB @ 5544.00ft
Calculation Method:	Minimum Curvature

PROJECT DETAILS: Dixon (NAD 83)	
Geodetic System:	Universal Transverse Mercator
Datum:	North American Datum 1983
Ellipsoid:	GRS 1980
Zone:	Zone 13N (108 W to 102 W)
System Datum:	Mean Sea Level

Plan:	Antero Dixon B07 P01
Created By:	ARK Directional Services
Date:	14:31, January 18 2011

Magnetic Field Details	
<b>Total Correction to Grid N=11.93°</b>	
<b>G</b>	Model: IGRF2010
<b>T</b>	Date: 20-Mar-11
<b>M</b>	Grid Conv: -1.69
	Mag. Dec: 10.24°
	Field Strength: 52337
	Dip: 65.83°

FORMATION TOP DETAILS		
TVDP	MDPath	Formation
3940.00	3949.28	Mesaverde
4700.00	4709.28	Price Coal
5600.00	5609.28	Top Gas
6425.00	6434.28	Cameo
7325.00	7334.28	Rollins

Vertical Section at 236.73°

# **Antero Resources**

**Dixon (NAD 83)**

**Dixon B**

**Antero Dixon B07 (111308) - Slot B07**

**Antero Dixon B07**

**Plan: Antero Dixon B07 P01**

## **Standard Planning Report - Geographic**

**18 January, 2011**

# ARK Directional Services

## Planning Report - Geographic

<b>Database:</b>	EDM SERVER DB	<b>Local Co-ordinate Reference:</b>	Well Antero Dixon B07 (111308) - Slot B07
<b>Company:</b>	Antero Resources	<b>TVD Reference:</b>	KB @ 5544.00ft
<b>Project:</b>	Dixon (NAD 83)	<b>MD Reference:</b>	KB @ 5544.00ft
<b>Site:</b>	Dixon B	<b>North Reference:</b>	Grid
<b>Well:</b>	Antero Dixon B07 (111308)	<b>Survey Calculation Method:</b>	Minimum Curvature
<b>Wellbore:</b>	Antero Dixon B07		
<b>Design:</b>	Antero Dixon B07 P01		

<b>Project</b>	Dixon (NAD 83)		
<b>Map System:</b>	Universal Transverse Mercator	<b>System Datum:</b>	Mean Sea Level
<b>Geo Datum:</b>	North American Datum 1983		
<b>Map Zone:</b>	Zone 13N (108 W to 102 W)		

<b>Site</b>	Dixon B				
<b>Site Position:</b>		<b>Northing:</b>	14,364,517.556 usft	<b>Latitude:</b>	39.524071000°N
<b>From:</b>	Lat/Long	<b>Easting:</b>	890,418.038 usft	<b>Longitude:</b>	107.659523000°W
<b>Position Uncertainty:</b>	0.00 ft	<b>Slot Radius:</b>	13.20 in	<b>Grid Convergence:</b>	-1.69 °

<b>Well</b>	Antero Dixon B07 (111308) - Slot B07					
<b>Well Position</b>	<b>+N/-S</b>	0.00 ft	<b>Northing:</b>	14,364,530.958 usft	<b>Latitude:</b>	39.524103856°N
	<b>+E/-W</b>	0.00 ft	<b>Easting:</b>	890,369.809 usft	<b>Longitude:</b>	107.659695253°W
<b>Position Uncertainty</b>		0.00 ft	<b>Wellhead Elevation:</b>		<b>Ground Level:</b>	5,520.00 ft

<b>Wellbore</b>	Antero Dixon B07				
<b>Magnetics</b>	<b>Model Name</b>	<b>Sample Date</b>	<b>Declination (°)</b>	<b>Dip Angle (°)</b>	<b>Field Strength (nT)</b>
	IGRF2010	2011/03/20	10.24	65.83	52,337

<b>Design</b>	Antero Dixon B07 P01				
<b>Audit Notes:</b>					
<b>Version:</b>	<b>Phase:</b>	PROTOTYPE	<b>Tie On Depth:</b>	0.00	
<b>Vertical Section:</b>	<b>Depth From (TVD) (ft)</b>	<b>+N/-S (ft)</b>	<b>+E/-W (ft)</b>	<b>Direction (°)</b>	
	0.00	0.00	0.00	236.73	

<b>Plan Sections</b>										
Measured Depth (ft)	Inclination (°)	Azimuth (°)	Vertical Depth (ft)	+N/-S (ft)	+E/-W (ft)	Dogleg Rate (°/100ft)	Build Rate (°/100ft)	Turn Rate (°/100ft)	TFO (°)	Target
0.00	0.00	0.00	0.00	0.00	0.00	0.00	0.00	0.00	0.00	
200.00	0.00	0.00	200.00	0.00	0.00	0.00	0.00	0.00	0.00	
1,000.00	10.00	236.73	995.94	-38.20	-58.22	1.25	1.25	0.00	236.73	
1,076.71	10.00	236.73	1,071.49	-45.51	-69.36	0.00	0.00	0.00	0.00	
1,876.71	0.00	0.00	1,867.44	-83.71	-127.58	1.25	-1.25	0.00	180.00	
4,709.28	0.00	0.00	4,700.00	-83.71	-127.58	0.00	0.00	0.00	0.00	BH B07
7,534.28	0.00	0.00	7,525.00	-83.71	-127.58	0.00	0.00	0.00	0.00	

# ARK Directional Services

## Planning Report - Geographic

<b>Database:</b>	EDM SERVER DB	<b>Local Co-ordinate Reference:</b>	Well Antero Dixon B07 (111308) - Slot B07
<b>Company:</b>	Antero Resources	<b>TVD Reference:</b>	KB @ 5544.00ft
<b>Project:</b>	Dixon (NAD 83)	<b>MD Reference:</b>	KB @ 5544.00ft
<b>Site:</b>	Dixon B	<b>North Reference:</b>	Grid
<b>Well:</b>	Antero Dixon B07 (111308)	<b>Survey Calculation Method:</b>	Minimum Curvature
<b>Wellbore:</b>	Antero Dixon B07		
<b>Design:</b>	Antero Dixon B07 P01		

Planned Survey										
Measured Depth (ft)	Inclination (°)	Azimuth (°)	Vertical Depth (ft)	+N/-S (ft)	+E/-W (ft)	Map Northing (usft)	Map Easting (usft)	Latitude	Longitude	
0.00	0.00	0.00	0.00	0.00	0.00	14,364,530.958	890,369.809	39.524103856°N	107.659695253°W	
100.00	0.00	0.00	100.00	0.00	0.00	14,364,530.958	890,369.809	39.524103856°N	107.659695253°W	
200.00	0.00	0.00	200.00	0.00	0.00	14,364,530.958	890,369.809	39.524103856°N	107.659695253°W	
<b>KOP 1.25°/100 at 200 MD/TVD</b>										
300.00	1.25	236.73	299.99	-0.60	-0.91	14,364,530.359	890,368.897	39.524102141°N	107.659698421°W	
400.00	2.50	236.73	399.94	-2.39	-3.65	14,364,528.564	890,366.161	39.524096995°N	107.659707924°W	
500.00	3.75	236.73	499.79	-5.38	-8.21	14,364,525.574	890,361.603	39.524088421°N	107.659723756°W	
600.00	5.00	236.73	599.49	-9.57	-14.58	14,364,521.389	890,355.225	39.524076423°N	107.659745912°W	
700.00	6.25	236.73	699.01	-14.95	-22.78	14,364,516.013	890,347.030	39.524061007°N	107.659774379°W	
800.00	7.50	236.73	798.29	-21.51	-32.79	14,364,509.446	890,337.022	39.524042181°N	107.659809145°W	
900.00	8.75	236.73	897.28	-29.26	-44.60	14,364,501.693	890,325.205	39.524019952°N	107.659850193°W	
1,000.00	10.00	236.73	995.94	-38.20	-58.22	14,364,492.757	890,311.586	39.523994332°N	107.659897503°W	
<b>Hold 10° at 1000 MD/996 TVD - Surf Csg at 1000 MD/TVD</b>										
1,076.71	10.00	236.73	1,071.49	-45.51	-69.36	14,364,485.450	890,300.449	39.523973382°N	107.659936191°W	
<b>Drop 1.25°/100 at 1077 MD/1071 TVD</b>										
1,100.00	9.71	236.73	1,094.44	-47.69	-72.69	14,364,483.263	890,297.116	39.523967113°N	107.659947768°W	
1,200.00	8.46	236.73	1,193.18	-56.36	-85.89	14,364,474.602	890,283.916	39.523942281°N	107.659993622°W	
1,300.00	7.21	236.73	1,292.24	-63.83	-97.29	14,364,467.125	890,272.520	39.523920844°N	107.660033208°W	
1,400.00	5.96	236.73	1,391.58	-70.12	-106.88	14,364,460.836	890,262.934	39.523902811°N	107.660066508°W	
1,500.00	4.71	236.73	1,491.15	-75.22	-114.65	14,364,455.736	890,255.161	39.523888191°N	107.660093507°W	
1,600.00	3.46	236.73	1,590.89	-79.13	-120.60	14,364,451.830	890,249.207	39.523876990°N	107.660114191°W	
1,700.00	2.21	236.73	1,690.77	-81.84	-124.74	14,364,449.117	890,245.073	39.523869214°N	107.660128550°W	
1,800.00	0.96	236.73	1,790.73	-83.36	-127.05	14,364,447.601	890,242.762	39.523864866°N	107.660136577°W	
1,876.71	0.00	0.00	1,867.43	-83.71	-127.58	14,364,447.249	890,242.226	39.523863857°N	107.660138442°W	
<b>Vertical at 1877 MD/1867 TVD</b>										
1,900.00	0.00	0.00	1,890.72	-83.71	-127.58	14,364,447.249	890,242.226	39.523863857°N	107.660138442°W	
2,000.00	0.00	0.00	1,990.72	-83.71	-127.58	14,364,447.249	890,242.226	39.523863857°N	107.660138442°W	
2,100.00	0.00	0.00	2,090.72	-83.71	-127.58	14,364,447.249	890,242.226	39.523863857°N	107.660138442°W	
2,200.00	0.00	0.00	2,190.72	-83.71	-127.58	14,364,447.249	890,242.226	39.523863857°N	107.660138442°W	
2,300.00	0.00	0.00	2,290.72	-83.71	-127.58	14,364,447.249	890,242.226	39.523863857°N	107.660138442°W	
2,400.00	0.00	0.00	2,390.72	-83.71	-127.58	14,364,447.249	890,242.226	39.523863857°N	107.660138442°W	
2,500.00	0.00	0.00	2,490.72	-83.71	-127.58	14,364,447.249	890,242.226	39.523863857°N	107.660138442°W	
2,600.00	0.00	0.00	2,590.72	-83.71	-127.58	14,364,447.249	890,242.226	39.523863857°N	107.660138442°W	
2,700.00	0.00	0.00	2,690.72	-83.71	-127.58	14,364,447.249	890,242.226	39.523863857°N	107.660138442°W	
2,800.00	0.00	0.00	2,790.72	-83.71	-127.58	14,364,447.249	890,242.226	39.523863857°N	107.660138442°W	
2,900.00	0.00	0.00	2,890.72	-83.71	-127.58	14,364,447.249	890,242.226	39.523863857°N	107.660138442°W	
3,000.00	0.00	0.00	2,990.72	-83.71	-127.58	14,364,447.249	890,242.226	39.523863857°N	107.660138442°W	
3,100.00	0.00	0.00	3,090.72	-83.71	-127.58	14,364,447.249	890,242.226	39.523863857°N	107.660138442°W	
3,200.00	0.00	0.00	3,190.72	-83.71	-127.58	14,364,447.249	890,242.226	39.523863857°N	107.660138442°W	
3,300.00	0.00	0.00	3,290.72	-83.71	-127.58	14,364,447.249	890,242.226	39.523863857°N	107.660138442°W	
3,400.00	0.00	0.00	3,390.72	-83.71	-127.58	14,364,447.249	890,242.226	39.523863857°N	107.660138442°W	
3,500.00	0.00	0.00	3,490.72	-83.71	-127.58	14,364,447.249	890,242.226	39.523863857°N	107.660138442°W	
3,600.00	0.00	0.00	3,590.72	-83.71	-127.58	14,364,447.249	890,242.226	39.523863857°N	107.660138442°W	
3,700.00	0.00	0.00	3,690.72	-83.71	-127.58	14,364,447.249	890,242.226	39.523863857°N	107.660138442°W	
3,800.00	0.00	0.00	3,790.72	-83.71	-127.58	14,364,447.249	890,242.226	39.523863857°N	107.660138442°W	
3,900.00	0.00	0.00	3,890.72	-83.71	-127.58	14,364,447.249	890,242.226	39.523863857°N	107.660138442°W	
4,000.00	0.00	0.00	3,990.72	-83.71	-127.58	14,364,447.249	890,242.226	39.523863857°N	107.660138442°W	
4,100.00	0.00	0.00	4,090.72	-83.71	-127.58	14,364,447.249	890,242.226	39.523863857°N	107.660138442°W	
4,200.00	0.00	0.00	4,190.72	-83.71	-127.58	14,364,447.249	890,242.226	39.523863857°N	107.660138442°W	
4,300.00	0.00	0.00	4,290.72	-83.71	-127.58	14,364,447.249	890,242.226	39.523863857°N	107.660138442°W	
4,400.00	0.00	0.00	4,390.72	-83.71	-127.58	14,364,447.249	890,242.226	39.523863857°N	107.660138442°W	
4,500.00	0.00	0.00	4,490.72	-83.71	-127.58	14,364,447.249	890,242.226	39.523863857°N	107.660138442°W	
4,600.00	0.00	0.00	4,590.72	-83.71	-127.58	14,364,447.249	890,242.226	39.523863857°N	107.660138442°W	
4,700.00	0.00	0.00	4,690.72	-83.71	-127.58	14,364,447.249	890,242.226	39.523863857°N	107.660138442°W	

# ARK Directional Services

## Planning Report - Geographic

<b>Database:</b>	EDM SERVER DB	<b>Local Co-ordinate Reference:</b>	Well Antero Dixon B07 (111308) - Slot B07
<b>Company:</b>	Antero Resources	<b>TVD Reference:</b>	KB @ 5544.00ft
<b>Project:</b>	Dixon (NAD 83)	<b>MD Reference:</b>	KB @ 5544.00ft
<b>Site:</b>	Dixon B	<b>North Reference:</b>	Grid
<b>Well:</b>	Antero Dixon B07 (111308)	<b>Survey Calculation Method:</b>	Minimum Curvature
<b>Wellbore:</b>	Antero Dixon B07		
<b>Design:</b>	Antero Dixon B07 P01		

Planned Survey										
Measured Depth (ft)	Inclination (°)	Azimuth (°)	Vertical Depth (ft)	+N/-S (ft)	+E/-W (ft)	Map Northing (usft)	Map Easting (usft)	Latitude	Longitude	
4,709.28	0.00	0.00	4,700.00	-83.71	-127.58	14,364,447.249	890,242.226	39.523863857°N	107.660138442°W	
<b>BH B07</b>										
4,800.00	0.00	0.00	4,790.72	-83.71	-127.58	14,364,447.249	890,242.226	39.523863857°N	107.660138442°W	
4,900.00	0.00	0.00	4,890.72	-83.71	-127.58	14,364,447.249	890,242.226	39.523863857°N	107.660138442°W	
5,000.00	0.00	0.00	4,990.72	-83.71	-127.58	14,364,447.249	890,242.226	39.523863857°N	107.660138442°W	
5,100.00	0.00	0.00	5,090.72	-83.71	-127.58	14,364,447.249	890,242.226	39.523863857°N	107.660138442°W	
5,200.00	0.00	0.00	5,190.72	-83.71	-127.58	14,364,447.249	890,242.226	39.523863857°N	107.660138442°W	
5,300.00	0.00	0.00	5,290.72	-83.71	-127.58	14,364,447.249	890,242.226	39.523863857°N	107.660138442°W	
5,400.00	0.00	0.00	5,390.72	-83.71	-127.58	14,364,447.249	890,242.226	39.523863857°N	107.660138442°W	
5,500.00	0.00	0.00	5,490.72	-83.71	-127.58	14,364,447.249	890,242.226	39.523863857°N	107.660138442°W	
5,600.00	0.00	0.00	5,590.72	-83.71	-127.58	14,364,447.249	890,242.226	39.523863857°N	107.660138442°W	
5,700.00	0.00	0.00	5,690.72	-83.71	-127.58	14,364,447.249	890,242.226	39.523863857°N	107.660138442°W	
5,800.00	0.00	0.00	5,790.72	-83.71	-127.58	14,364,447.249	890,242.226	39.523863857°N	107.660138442°W	
5,900.00	0.00	0.00	5,890.72	-83.71	-127.58	14,364,447.249	890,242.226	39.523863857°N	107.660138442°W	
6,000.00	0.00	0.00	5,990.72	-83.71	-127.58	14,364,447.249	890,242.226	39.523863857°N	107.660138442°W	
6,100.00	0.00	0.00	6,090.72	-83.71	-127.58	14,364,447.249	890,242.226	39.523863857°N	107.660138442°W	
6,200.00	0.00	0.00	6,190.72	-83.71	-127.58	14,364,447.249	890,242.226	39.523863857°N	107.660138442°W	
6,300.00	0.00	0.00	6,290.72	-83.71	-127.58	14,364,447.249	890,242.226	39.523863857°N	107.660138442°W	
6,400.00	0.00	0.00	6,390.72	-83.71	-127.58	14,364,447.249	890,242.226	39.523863857°N	107.660138442°W	
6,500.00	0.00	0.00	6,490.72	-83.71	-127.58	14,364,447.249	890,242.226	39.523863857°N	107.660138442°W	
6,600.00	0.00	0.00	6,590.72	-83.71	-127.58	14,364,447.249	890,242.226	39.523863857°N	107.660138442°W	
6,700.00	0.00	0.00	6,690.72	-83.71	-127.58	14,364,447.249	890,242.226	39.523863857°N	107.660138442°W	
6,800.00	0.00	0.00	6,790.72	-83.71	-127.58	14,364,447.249	890,242.226	39.523863857°N	107.660138442°W	
6,900.00	0.00	0.00	6,890.72	-83.71	-127.58	14,364,447.249	890,242.226	39.523863857°N	107.660138442°W	
7,000.00	0.00	0.00	6,990.72	-83.71	-127.58	14,364,447.249	890,242.226	39.523863857°N	107.660138442°W	
7,100.00	0.00	0.00	7,090.72	-83.71	-127.58	14,364,447.249	890,242.226	39.523863857°N	107.660138442°W	
7,200.00	0.00	0.00	7,190.72	-83.71	-127.58	14,364,447.249	890,242.226	39.523863857°N	107.660138442°W	
7,300.00	0.00	0.00	7,290.72	-83.71	-127.58	14,364,447.249	890,242.226	39.523863857°N	107.660138442°W	
7,400.00	0.00	0.00	7,390.72	-83.71	-127.58	14,364,447.249	890,242.226	39.523863857°N	107.660138442°W	
7,500.00	0.00	0.00	7,490.72	-83.71	-127.58	14,364,447.249	890,242.226	39.523863857°N	107.660138442°W	
7,534.27	0.00	0.00	7,524.99	-83.71	-127.58	14,364,447.249	890,242.226	39.523863857°N	107.660138442°W	
<b>TD at 7534 MD/7525 TVD</b>										
7,534.28	0.00	0.00	7,525.00	-83.71	-127.58	14,364,447.249	890,242.226	39.523863857°N	107.660138442°W	

Design Targets										
Target Name	Dip Angle (°)	Dip Dir. (°)	TVD (ft)	+N/-S (ft)	+E/-W (ft)	Northing (usft)	Easting (usft)	Latitude	Longitude	
BH B07	0.00	360.00	4,700.00	-83.71	-127.58	14,364,447.249	890,242.226	39.523863857°N	107.660138442°W	
- hit/miss target - Shape - plan hits target center - Circle (radius 25.00)										

Casing Points					
Measured Depth (ft)	Vertical Depth (ft)	Name	Casing Diameter (in)	Hole Diameter (in)	
1,000.00	995.94	Surf Csg at 1000 MD/TVD	5.50	6.00	

# ARK Directional Services

## Planning Report - Geographic

<b>Database:</b>	EDM SERVER DB	<b>Local Co-ordinate Reference:</b>	Well Antero Dixon B07 (111308) - Slot B07
<b>Company:</b>	Antero Resources	<b>TVD Reference:</b>	KB @ 5544.00ft
<b>Project:</b>	Dixon (NAD 83)	<b>MD Reference:</b>	KB @ 5544.00ft
<b>Site:</b>	Dixon B	<b>North Reference:</b>	Grid
<b>Well:</b>	Antero Dixon B07 (111308)	<b>Survey Calculation Method:</b>	Minimum Curvature
<b>Wellbore:</b>	Antero Dixon B07		
<b>Design:</b>	Antero Dixon B07 P01		

Plan Annotations					
Measured Depth (ft)	Vertical Depth (ft)	Local Coordinates		Comment	
		+N/-S (ft)	+E/-W (ft)		
200.00	200.00	0.00	0.00	KOP 1.25°/100 at 200 MD/TVD	
1,000.00	995.94	-38.20	-58.22	Hold 10° at 1000 MD/996 TVD	
1,076.71	1,071.49	-45.51	-69.36	Drop 1.25°/100 at 1077 MD/1071 TVD	
1,876.71	1,867.43	-83.71	-127.58	Vertical at 1877 MD/1867 TVD	
7,534.27	7,524.99	-83.71	-127.58	TD at 7534 MD/7525 TVD	