



ANADARKO PETROLEUM CORP.

ANADARKO COLORADO NORTHERN ZONE NAD 83

WELD_REI 13-10 PAD

REI 38-9

REI 38-9

Plan: REI 38-9 (wp01)

Standard Planning Report

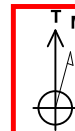
18 October, 2010



Project: ANADARKO COLORADO NORTHERN ZONE NAD 83
 Site: WELD_REI 13-10 PAD
 Well: REI 38-9
 Wellbore: REI 38-9
 Section:
 SHL:
 Design: REI 38-9 (wp01)
 Latitude: 40° 14' 1.748 N
 Longitude: 104° 39' 28.145 W
 GL: 4816.0
 KB: WELL @ 4816.0ft (Original Well Elev)



Weatherford



Azimuths to True North
 Magnetic North: 8.84°
 Magnetic Field
 Strength: 53109.1snT
 Dip Angle: 66.97°
 Date: 10/11/2010
 Model: BGGM2010

FORMATION TOP DETAILS

TVDPath	MDPath	Formation
4066.0	4171.3	PK Depth
4348.0	4453.3	SX Depth
6826.0	6933.3	NIO Depth
7126.0	7231.3	CD Depth
7194.0	7299.3	GH Depth
7566.0	7671.3	J Depth

CASING DETAILS

TVD	MD	Name	Size
750.0	750.0	9 5/8"	9-5/8

SECTION DETAILS

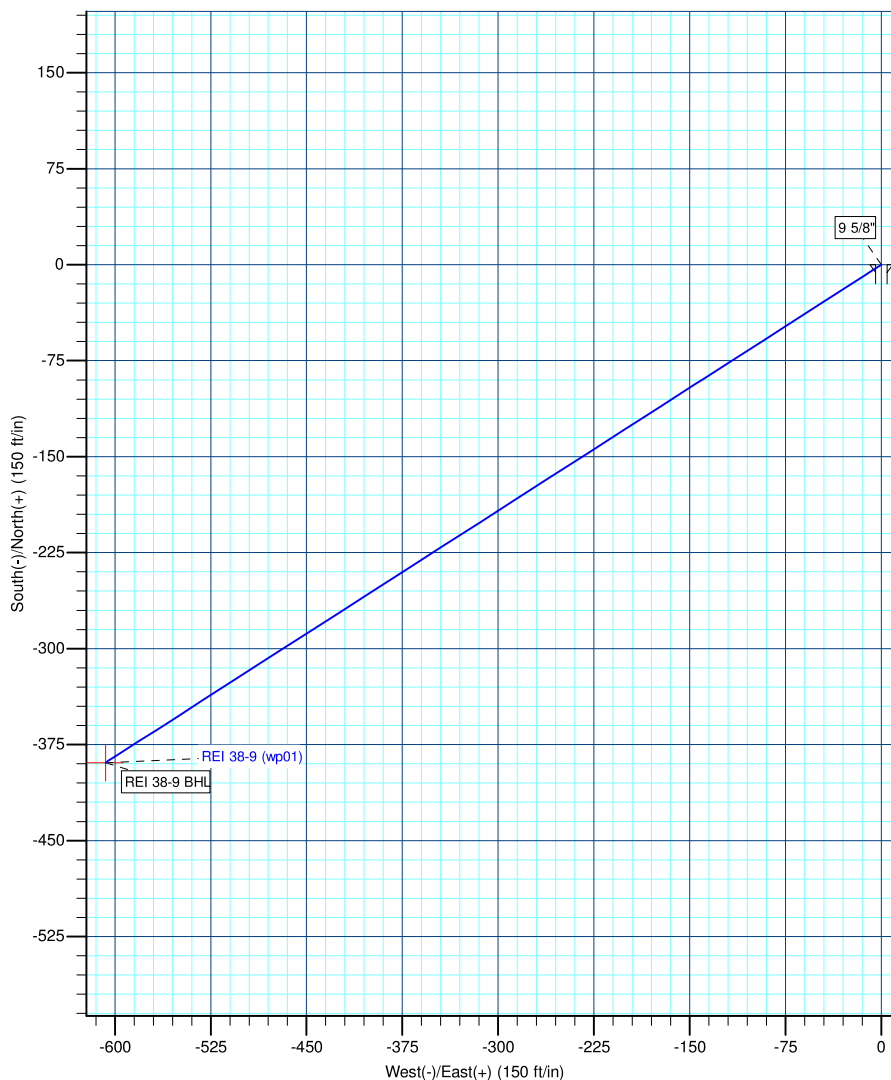
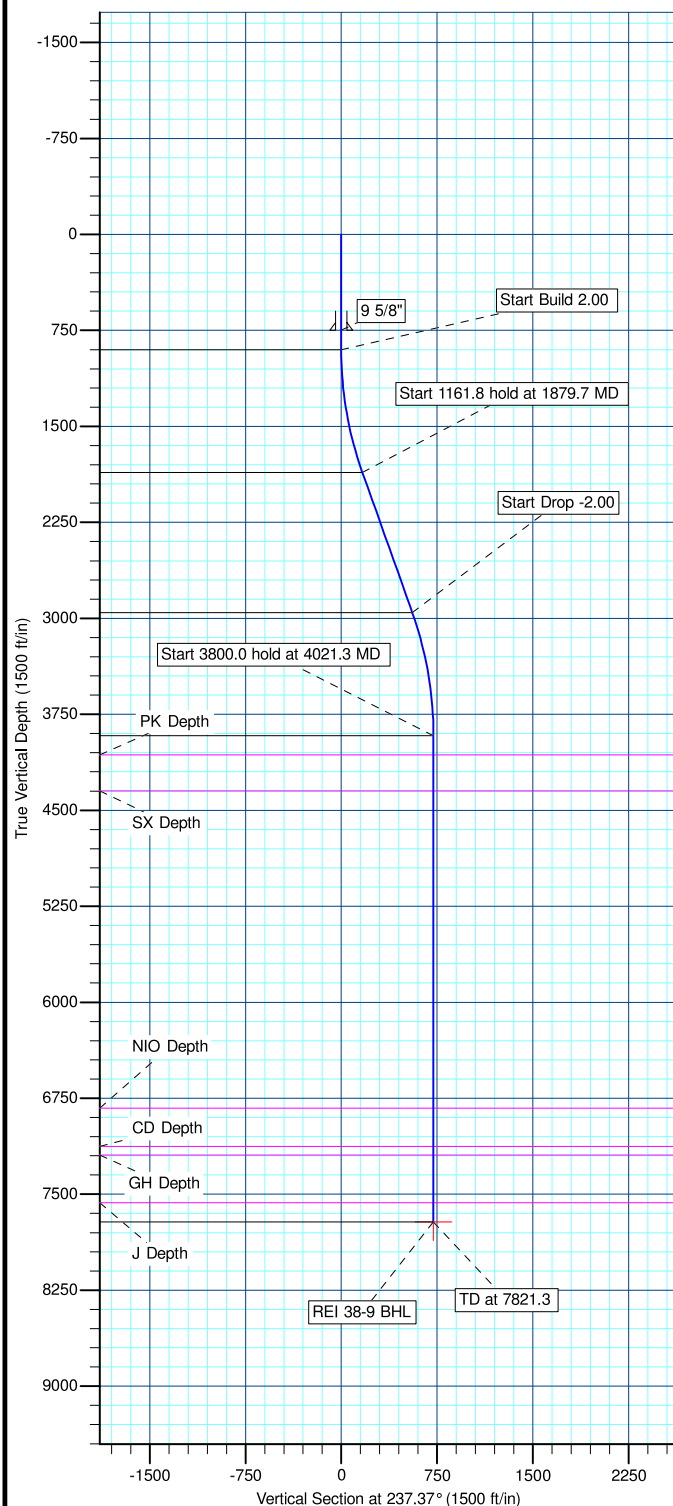
MD	Inc	Azi	TVD	+N/-S	+E/-W	DLeg	TFace	VSec	Annotation
0.0	0.00	0.00	0.0	0.0	0.0	0.00	0.00	0.0	
900.0	0.00	0.00	900.0	0.0	0.0	0.00	0.00	0.0	Start Build 2.00
1879.7	19.59	237.37	1860.7	-89.5	-139.7	2.00	237.37	165.9	Start 1161.8 hold at 1879.7 MD
3041.5	19.59	237.37	2955.3	-299.6	-467.8	0.00	0.00	555.5	Start Drop -2.00
4021.3	0.00	0.00	3916.0	-389.0	-607.5	2.00	180.00	721.4	Start 3800.0 hold at 4021.3 MD
7821.3	0.00	0.00	7716.0	-389.0	-607.5	0.00	0.00	721.4	TD at 7821.3

WELL DETAILS: REI 38-9

+N/-S	+E/-W	Northing	Ground Level: Easting	4816.0 Latitude	Longitude	Slot
0.0	0.0	1329138.74	3235127.83	40° 14' 1.748 N	104° 39' 28.145 W	

WELLBORE TARGET DETAILS (MAP CO-ORDINATES AND LAT/LONG)

Name	TVD	+N/-S	+E/-W	Latitude	Longitude	Shape
REI 38-9 BHL	7716.0	-389.0	-607.5	40° 13' 57.904 N	104° 39' 35.978 W	Point



Created By: Jason Daguitera Date: 17:00, October 18 2010



Weatherford International Ltd.

Planning Report

Database:	EDM 2003.21 Single User Db	Local Co-ordinate Reference:	Well REI 38-9
Company:	ANADARKO PETROLEUM CORP.	TVD Reference:	WELL @ 4816.0ft (Original Well Elev)
Project:	ANADARKO COLORADO NORTHERN ZONE NAD 83	MD Reference:	WELL @ 4816.0ft (Original Well Elev)
Site:	WELD_REI 13-10 PAD	North Reference:	True
Well:	REI 38-9	Survey Calculation Method:	Minimum Curvature
Wellbore:	REI 38-9		
Design:	REI 38-9 (wp01)		

Project	ANADARKO COLORADO NORTHERN ZONE NAD 83, ROCKIES, ROCKIES		
Map System:	US State Plane 1983	System Datum:	Mean Sea Level
Geo Datum:	North American Datum 1983		
Map Zone:	Colorado Northern Zone		

Site	WELD_REI 13-10 PAD		
Site Position:		Northing:	1,329,137.23ft
From:	Lat/Long	Easting:	3,235,159.67ft
Position Uncertainty:	0.0 ft	Slot Radius:	"
		Latitude:	40° 14' 1.730 N
		Longitude:	104° 39' 27.734 W
		Grid Convergence:	0.54 °

Well	REI 38-9		
Well Position	+N/-S	1.8 ft	Northing:
	+E/-W	-31.8 ft	Easting:
Position Uncertainty		0.0 ft	Wellhead Elevation:
			ft
			Latitude:
			40° 14' 1.748 N
			Longitude:
			104° 39' 28.145 W
			Ground Level:
			4,816.0ft

Wellbore	REI 38-9				
Magnetics	Model Name	Sample Date	Declination (°)	Dip Angle (°)	Field Strength (nT)
	BGGM2010	10/11/2010	8.84	66.97	53,109

Design	REI 38-9 (wp01)			
Audit Notes:				
Version:	Phase:	PLAN	Tie On Depth:	0.0
Vertical Section:	Depth From (TVD) (ft)	+N/-S (ft)	+E/-W (ft)	Direction (°)
	0.0	0.0	0.0	237.37

Plan Sections										
Measured Depth (ft)	Inclination (°)	Azimuth (°)	Vertical Depth (ft)	+N/-S (ft)	+E/-W (ft)	Dogleg Rate (°/100ft)	Build Rate (°/100ft)	Turn Rate (°/100ft)	TFO (°)	Target
0.0	0.00	0.00	0.0	0.0	0.0	0.00	0.00	0.00	0.00	
900.0	0.00	0.00	900.0	0.0	0.0	0.00	0.00	0.00	0.00	
1,879.7	19.59	237.37	1,860.7	-89.5	-139.7	2.00	2.00	0.00	237.37	
3,041.5	19.59	237.37	2,955.3	-299.6	-467.8	0.00	0.00	0.00	0.00	
4,021.3	0.00	0.00	3,916.0	-389.0	-607.5	2.00	-2.00	0.00	180.00	
7,821.3	0.00	0.00	7,716.0	-389.0	-607.5	0.00	0.00	0.00	0.00	REI 38-9 BHL

Database:	EDM 2003.21 Single User Db	Local Co-ordinate Reference:	Well REI 38-9
Company:	ANADARKO PETROLEUM CORP.	TVD Reference:	WELL @ 4816.0ft (Original Well Elev)
Project:	ANADARKO COLORADO NORTHERN ZONE NAD 83	MD Reference:	WELL @ 4816.0ft (Original Well Elev)
Site:	WELD_REI 13-10 PAD	North Reference:	True
Well:	REI 38-9	Survey Calculation Method:	Minimum Curvature
Wellbore:	REI 38-9		
Design:	REI 38-9 (wp01)		

Planned Survey

Measured Depth (ft)	Inclination (°)	Azimuth (°)	Vertical Depth (ft)	+N/-S (ft)	+E/-W (ft)	Vertical Section (ft)	Dogleg Rate (°/100ft)	Build Rate (°/100ft)	Turn Rate (°/100ft)
0.0	0.00	0.00	0.0	0.0	0.0	0.0	0.00	0.00	0.00
100.0	0.00	0.00	100.0	0.0	0.0	0.0	0.00	0.00	0.00
200.0	0.00	0.00	200.0	0.0	0.0	0.0	0.00	0.00	0.00
300.0	0.00	0.00	300.0	0.0	0.0	0.0	0.00	0.00	0.00
400.0	0.00	0.00	400.0	0.0	0.0	0.0	0.00	0.00	0.00
500.0	0.00	0.00	500.0	0.0	0.0	0.0	0.00	0.00	0.00
600.0	0.00	0.00	600.0	0.0	0.0	0.0	0.00	0.00	0.00
700.0	0.00	0.00	700.0	0.0	0.0	0.0	0.00	0.00	0.00
9 5/8"									
750.0	0.00	0.00	750.0	0.0	0.0	0.0	0.00	0.00	0.00
800.0	0.00	0.00	800.0	0.0	0.0	0.0	0.00	0.00	0.00
Start Build 2.00									
900.0	0.00	0.00	900.0	0.0	0.0	0.0	0.00	0.00	0.00
1,000.0	2.00	237.37	1,000.0	-0.9	-1.5	1.7	2.00	2.00	0.00
1,100.0	4.00	237.37	1,099.8	-3.8	-5.9	7.0	2.00	2.00	0.00
1,200.0	6.00	237.37	1,199.5	-8.5	-13.2	15.7	2.00	2.00	0.00
1,300.0	8.00	237.37	1,298.7	-15.0	-23.5	27.9	2.00	2.00	0.00
1,400.0	10.00	237.37	1,397.5	-23.5	-36.7	43.5	2.00	2.00	0.00
1,500.0	12.00	237.37	1,495.6	-33.8	-52.7	62.6	2.00	2.00	0.00
1,600.0	14.00	237.37	1,593.1	-45.9	-71.7	85.1	2.00	2.00	0.00
1,700.0	16.00	237.37	1,689.6	-59.8	-93.5	111.0	2.00	2.00	0.00
1,800.0	18.00	237.37	1,785.3	-75.6	-118.1	140.2	2.00	2.00	0.00
Start 1161.8 hold at 1879.7 MD									
1,879.7	19.59	237.37	1,860.7	-89.5	-139.7	165.9	2.00	2.00	0.00
1,900.0	19.59	237.37	1,879.8	-93.1	-145.4	172.7	0.00	0.00	0.00
2,000.0	19.59	237.37	1,974.0	-111.2	-173.7	206.2	0.00	0.00	0.00
2,100.0	19.59	237.37	2,068.3	-129.3	-201.9	239.8	0.00	0.00	0.00
2,200.0	19.59	237.37	2,162.5	-147.4	-230.2	273.3	0.00	0.00	0.00
2,300.0	19.59	237.37	2,256.7	-165.5	-258.4	306.8	0.00	0.00	0.00
2,400.0	19.59	237.37	2,350.9	-183.6	-286.6	340.4	0.00	0.00	0.00
2,500.0	19.59	237.37	2,445.1	-201.6	-314.9	373.9	0.00	0.00	0.00
2,600.0	19.59	237.37	2,539.3	-219.7	-343.1	407.5	0.00	0.00	0.00
2,700.0	19.59	237.37	2,633.5	-237.8	-371.4	441.0	0.00	0.00	0.00
2,800.0	19.59	237.37	2,727.7	-255.9	-399.6	474.5	0.00	0.00	0.00
2,900.0	19.59	237.37	2,821.9	-274.0	-427.9	508.1	0.00	0.00	0.00
3,000.0	19.59	237.37	2,916.1	-292.1	-456.1	541.6	0.00	0.00	0.00
Start Drop -2.00									
3,041.5	19.59	237.37	2,955.3	-299.6	-467.8	555.5	0.00	0.00	0.00
3,100.0	18.43	237.37	3,010.5	-309.8	-483.9	574.6	2.00	-2.00	0.00
3,200.0	16.43	237.37	3,106.0	-326.0	-509.1	604.5	2.00	-2.00	0.00
3,300.0	14.43	237.37	3,202.3	-340.3	-531.5	631.1	2.00	-2.00	0.00
3,400.0	12.43	237.37	3,299.6	-352.9	-551.0	654.3	2.00	-2.00	0.00
3,500.0	10.43	237.37	3,397.6	-363.5	-567.7	674.1	2.00	-2.00	0.00
3,600.0	8.43	237.37	3,496.3	-372.4	-581.5	690.5	2.00	-2.00	0.00
3,700.0	6.43	237.37	3,595.4	-379.3	-592.4	703.4	2.00	-2.00	0.00
3,800.0	4.43	237.37	3,695.0	-384.4	-600.3	712.9	2.00	-2.00	0.00
3,900.0	2.43	237.37	3,794.8	-387.7	-605.4	718.9	2.00	-2.00	0.00
4,000.0	0.43	237.37	3,894.7	-389.0	-607.5	721.3	2.00	-2.00	0.00
Start 3800.0 hold at 4021.3 MD									
4,021.3	0.00	0.00	3,916.0	-389.0	-607.5	721.4	2.00	-2.00	0.00
4,100.0	0.00	0.00	3,994.7	-389.0	-607.5	721.4	0.00	0.00	0.00
PK Depth									

Database:	EDM 2003.21 Single User Db	Local Co-ordinate Reference:	Well REI 38-9
Company:	ANADARKO PETROLEUM CORP.	TVD Reference:	WELL @ 4816.0ft (Original Well Elev)
Project:	ANADARKO COLORADO NORTHERN ZONE NAD 83	MD Reference:	WELL @ 4816.0ft (Original Well Elev)
Site:	WELD_REI 13-10 PAD	North Reference:	True
Well:	REI 38-9	Survey Calculation Method:	Minimum Curvature
Wellbore:	REI 38-9		
Design:	REI 38-9 (wp01)		

Planned Survey

Measured Depth (ft)	Inclination (°)	Azimuth (°)	Vertical Depth (ft)	+N/-S (ft)	+E/-W (ft)	Vertical Section (ft)	Dogleg Rate (°/100ft)	Build Rate (°/100ft)	Turn Rate (°/100ft)
4,171.3	0.00	0.00	4,066.0	-389.0	-607.5	721.4	0.00	0.00	0.00
4,200.0	0.00	0.00	4,094.7	-389.0	-607.5	721.4	0.00	0.00	0.00
4,300.0	0.00	0.00	4,194.7	-389.0	-607.5	721.4	0.00	0.00	0.00
4,400.0	0.00	0.00	4,294.7	-389.0	-607.5	721.4	0.00	0.00	0.00
SX Depth									
4,453.3	0.00	0.00	4,348.0	-389.0	-607.5	721.4	0.00	0.00	0.00
4,500.0	0.00	0.00	4,394.7	-389.0	-607.5	721.4	0.00	0.00	0.00
4,600.0	0.00	0.00	4,494.7	-389.0	-607.5	721.4	0.00	0.00	0.00
4,700.0	0.00	0.00	4,594.7	-389.0	-607.5	721.4	0.00	0.00	0.00
4,800.0	0.00	0.00	4,694.7	-389.0	-607.5	721.4	0.00	0.00	0.00
4,900.0	0.00	0.00	4,794.7	-389.0	-607.5	721.4	0.00	0.00	0.00
5,000.0	0.00	0.00	4,894.7	-389.0	-607.5	721.4	0.00	0.00	0.00
5,100.0	0.00	0.00	4,994.7	-389.0	-607.5	721.4	0.00	0.00	0.00
5,200.0	0.00	0.00	5,094.7	-389.0	-607.5	721.4	0.00	0.00	0.00
5,300.0	0.00	0.00	5,194.7	-389.0	-607.5	721.4	0.00	0.00	0.00
5,400.0	0.00	0.00	5,294.7	-389.0	-607.5	721.4	0.00	0.00	0.00
5,500.0	0.00	0.00	5,394.7	-389.0	-607.5	721.4	0.00	0.00	0.00
5,600.0	0.00	0.00	5,494.7	-389.0	-607.5	721.4	0.00	0.00	0.00
5,700.0	0.00	0.00	5,594.7	-389.0	-607.5	721.4	0.00	0.00	0.00
5,800.0	0.00	0.00	5,694.7	-389.0	-607.5	721.4	0.00	0.00	0.00
5,900.0	0.00	0.00	5,794.7	-389.0	-607.5	721.4	0.00	0.00	0.00
6,000.0	0.00	0.00	5,894.7	-389.0	-607.5	721.4	0.00	0.00	0.00
6,100.0	0.00	0.00	5,994.7	-389.0	-607.5	721.4	0.00	0.00	0.00
6,200.0	0.00	0.00	6,094.7	-389.0	-607.5	721.4	0.00	0.00	0.00
6,300.0	0.00	0.00	6,194.7	-389.0	-607.5	721.4	0.00	0.00	0.00
6,400.0	0.00	0.00	6,294.7	-389.0	-607.5	721.4	0.00	0.00	0.00
6,500.0	0.00	0.00	6,394.7	-389.0	-607.5	721.4	0.00	0.00	0.00
6,600.0	0.00	0.00	6,494.7	-389.0	-607.5	721.4	0.00	0.00	0.00
6,700.0	0.00	0.00	6,594.7	-389.0	-607.5	721.4	0.00	0.00	0.00
6,800.0	0.00	0.00	6,694.7	-389.0	-607.5	721.4	0.00	0.00	0.00
6,900.0	0.00	0.00	6,794.7	-389.0	-607.5	721.4	0.00	0.00	0.00
NIO Depth									
6,933.3	0.00	0.00	6,828.0	-389.0	-607.5	721.4	0.00	0.00	0.00
7,000.0	0.00	0.00	6,894.7	-389.0	-607.5	721.4	0.00	0.00	0.00
7,100.0	0.00	0.00	6,994.7	-389.0	-607.5	721.4	0.00	0.00	0.00
7,200.0	0.00	0.00	7,094.7	-389.0	-607.5	721.4	0.00	0.00	0.00
CD Depth									
7,231.3	0.00	0.00	7,126.0	-389.0	-607.5	721.4	0.00	0.00	0.00
GH Depth									
7,299.3	0.00	0.00	7,194.0	-389.0	-607.5	721.4	0.00	0.00	0.00
7,300.0	0.00	0.00	7,194.7	-389.0	-607.5	721.4	0.00	0.00	0.00
7,400.0	0.00	0.00	7,294.7	-389.0	-607.5	721.4	0.00	0.00	0.00
7,500.0	0.00	0.00	7,394.7	-389.0	-607.5	721.4	0.00	0.00	0.00
7,600.0	0.00	0.00	7,494.7	-389.0	-607.5	721.4	0.00	0.00	0.00
J Depth									
7,671.3	0.00	0.00	7,566.0	-389.0	-607.5	721.4	0.00	0.00	0.00
7,700.0	0.00	0.00	7,594.7	-389.0	-607.5	721.4	0.00	0.00	0.00
7,800.0	0.00	0.00	7,694.7	-389.0	-607.5	721.4	0.00	0.00	0.00
TD at 7821.3									
7,821.3	0.00	0.00	7,716.0	-389.0	-607.5	721.4	0.00	0.00	0.00



Weatherford International Ltd.

Planning Report

Database:	EDM 2003.21 Single User Db	Local Co-ordinate Reference:	Well REI 38-9
Company:	ANADARKO PETROLEUM CORP.	TVD Reference:	WELL @ 4816.0ft (Original Well Elev)
Project:	ANADARKO COLORADO NORTHERN ZONE NAD 83	MD Reference:	WELL @ 4816.0ft (Original Well Elev)
Site:	WELD_REI 13-10 PAD	North Reference:	True
Well:	REI 38-9	Survey Calculation Method:	Minimum Curvature
Wellbore:	REI 38-9		
Design:	REI 38-9 (wp01)		

Design Targets

Target Name

- hit/miss target	Dip Angle (°)	Dip Dir. (°)	TVD (ft)	+N/-S (ft)	+E/-W (ft)	Northing (ft)	Easting (ft)	Latitude	Longitude
- Shape									
REI 38-9 BHL	0.00	0.00	7,716.0	-389.0	-607.5	1,328,743.95	3,234,524.02	40° 13' 57.904 N	104° 39' 35.978 W
- plan hits target center									
- Point									

Casing Points

Measured Depth (ft)	Vertical Depth (ft)	Name	Casing Diameter (")	Hole Diameter (")
750.0	750.0	9 5/8"	9-5/8	12-1/4

Formations

Measured Depth (ft)	Vertical Depth (ft)	Name	Lithology	Dip (°)	Dip Direction (°)
6,933.3	6,828.0	NIO Depth			
4,453.3	4,348.0	SX Depth			
7,231.3	7,126.0	CD Depth			
7,671.3	7,566.0	J Depth			
7,299.3	7,194.0	GH Depth			
4,171.3	4,066.0	PK Depth			

Plan Annotations

Measured Depth (ft)	Vertical Depth (ft)	Local Coordinates		Comment
		+N/-S (ft)	+E/-W (ft)	
900.0	900.0	0.0	0.0	Start Build 2.00
1,879.7	1,860.7	-89.5	-139.7	Start 1161.8 hold at 1879.7 MD
3,041.5	2,955.3	-299.6	-467.8	Start Drop -2.00
4,021.3	3,916.0	-389.0	-607.5	Start 3800.0 hold at 4021.3 MD
7,821.3	7,716.0	-389.0	-607.5	TD at 7821.3