

**OXY GRAND JUNCTION EBUSINESS
DO NOT MAIL
BROWNFIELD, Texas**

CC
CC 697-09-50B

H&P/330

**Post Job Summary
Cement Surface Casing**

Prepared for: MARCO SILVA
Date Prepared: SEPT. 19. 2010
Version: 1

Service Supervisor: ARNOLD, EDWARD

Submitted by:

HALLIBURTON

The Road to Excellence Starts with Safety

Sold To #: 344034	Ship To #: 2808171	Quote #:	Sales Order #: 7629150
Customer: OXY GRAND JUNCTION EBUSINESS	Customer Rep: Silva, Marco		
Well Name: CC	Well #: 697-09-50B	API/UWI #: 05-045-18175	
Field: GRAND VALLEY	City (SAP): PARACHUTE	County/Parish: Garfield	State: Colorado
Lat: N 39.531 deg. OR N 39 deg. 31 min. 50.621 secs.	Long: W 108.233 deg. OR W -109 deg. 46 min. 0.563 secs.		
Contractor: H&P Drilling	Rig/Platform Name/Num: H&P 330		
Job Purpose: Cement Surface Casing			
Well Type: Development Well	Job Type: Cement Surface Casing		
Sales Person: DUNNING, DUSTIN	Srv Supervisor: ARNOLD, EDWARD	MBU ID Emp #: 439784	

Job Personnel

HES Emp Name	Exp Hrs	Emp #	HES Emp Name	Exp Hrs	Emp #	HES Emp Name	Exp Hrs	Emp #
ARNOLD, EDWARD John	18.5	439784	BROWN, TRAVIS A	18.5	396848	DUBON, TODD N	18.5	443351
HAYES, JESSE Doug	18.5	403601						

Equipment

HES Unit #	Distance-1 way	HES Unit #	Distance-1 way	HES Unit #	Distance-1 way	HES Unit #	Distance-1 way
10822535	120 mile	10856450	120 mile	10856464	120 mile	10951250	120 mile
11360871	120 mile	11542767	120 mile				

Job Hours

Date	On Location Hours	Operating Hours	Date	On Location Hours	Operating Hours	Date	On Location Hours	Operating Hours
9.18.10	7.5	1	9.19.10	11				
TOTAL			Total is the sum of each column separately					

Job

Job Times

Formation Name	Formation Depth (MD)	Top	Bottom	Form Type	Job depth MD	Water Depth	Perforation Depth (MD)	From	To	Date	Time	Time Zone
				BHST	2730. ft					18 - Sep - 2010	12:00	MST
										18 - Sep - 2010	16:30	MST
										19 - Sep - 2010	01:03	MST
										19 - Sep - 2010	08:35	MST
										19 - Sep - 2010	11:00	MST

Well Data

Description	New / Used	Max pressure psig	Size in	ID in	Weight lbm/ft	Thread	Grade	Top MD ft	Bottom MD ft	Top TVD ft	Bottom TVD ft
Open Hole				14.75					2730.		
Surface Casing	Unknown		9.625	8.921	36.		J-55		2730.		

Sales/Rental/3rd Party (HES)

Description	Qty	Qty uom	Depth	Supplier
PLUG,CMTG, TOP, 9 5/8, HWE, 8.16 MIN/9.06 MA	1	EA		
R/A DENSOMETER W/CHART RECORDER, /JOB, ZI	1	JOB		
PORT. DATA ACQUIS. W/OPTICEM RT W/HES	1	EA		
ADC (AUTO DENSITY CTRL) SYS, /JOB, ZI	1	JOB		

Tools and Accessories

Type	Size	Qty	Make	Depth	Type	Size	Qty	Make	Depth	Type	Size	Qty	Make
Guide Shoe					Packer					Top Plug	9.625	1	HES
Float Shoe					Bridge Plug					Bottom Plug			
Float Collar					Retainer					SSR plug set			
Insert Float										Plug Container	9.625	1	HES
Stage Tool										Centralizers			

Miscellaneous Materials

Gelling Agt	Conc	Surfactant	Conc	Acid Type	Qty	Conc	%
Treatment Fld	Conc	Inhibitor	Conc	Sand Type	Size	Qty	

Fluid Data									
Stage/Plug #: 1									
Fluid #	Stage Type	Fluid Name	Qty	Qty uom	Mixing Density lbm/gal	Yield ft ³ /sk	Mix Fluid Gal/sk	Rate bbl/min	Total Mix Fluid Gal/sk
1	Water Spacer		20.00	bbl	8.33	.0	.0	5	
2	Super Flush 101	SUPER FLUSH 101 - SBM (12199)	20.00	bbl	10.	.0	.0	5	
3	Water Spacer		20.00	bbl	.	.0	.0	5	
4	VersaCem Lead Cement	VERSACEM (TM) SYSTEM (452010)	890.0	sacks	12.3	2.33	12.62	5	12.62
		12.62 Gal	FRESH WATER						
5	VersaCem Tail Cement	VERSACEM (TM) SYSTEM (452010)	160.0	sacks	12.8	2.07	10.67	5	10.67
		10.67 Gal	FRESH WATER						
6	Displacement		205.00	bbl	.	.0	.0	.2	
7	Topout Cement	HALCEM (TM) SYSTEM (452986)		sacks	12.5	1.97	10.96		10.96
		10.96 Gal	FRESH WATER						
Calculated Values		Pressures		Volumes					
Displacement	205	Shut In: Instant		Lost Returns	20	Cement Slurry	493	Pad	
Top Of Cement	SURFACE	5 Min		Cement Returns	85	Actual Displacement	205	Treatment	
Frac Gradient		15 Min		Spacers	60	Load and Breakdown		Total Job	758
Rates									
Circulating	RIG	Mixing	5	Displacement	2	Avg. Job	3		
Cement Left in Pipe	Amount	56 ft	Reason	Shoe Joint					
Frac Ring # 1 @	ID	Frac ring # 2 @	ID	Frac Ring # 3 @	ID	Frac Ring # 4 @	ID		
The Information Stated Herein Is Correct				Customer Representative Signature					

The Road to Excellence Starts with Safety

Sold To #: 344034		Ship To #: 2808171		Quote #:		Sales Order #: 7629150	
Customer: OXY GRAND JUNCTION EBUSINESS				Customer Rep: Silva, Marco			
Well Name: CC			Well #: 697-09-50B			API/UWI #: 05-045-18175	
Field: GRAND VALLEY		City (SAP): PARACHUTE		County/Parish: Garfield		State: Colorado	
Legal Description:							
Lat: N 39.531 deg. OR N 39 deg. 31 min. 50.621 secs.				Long: W 108.233 deg. OR W -109 deg. 46 min. 0.563 secs.			
Contractor: H&P Drilling			Rig/Platform Name/Num: H&P 330				
Job Purpose: Cement Surface Casing						Ticket Amount:	
Well Type: Development Well			Job Type: Cement Surface Casing				
Sales Person: DUNNING, DUSTIN			Srvc Supervisor: ARNOLD, EDWARD			MBU ID Emp #: 439784	

Activity Description	Date/Time	Cht #	Rate bbl/min	Volume bbl		Pressure psig		Comments
				Stage	Total	Tubing	Casing	
Call Out	09/18/2010 12:00							
Pre-Convoy Safety Meeting	09/18/2010 14:00							Including entire cement crew
Crew Leave Yard	09/18/2010 14:10							
Arrive At Loc	09/18/2010 16:30							Rig still running casing Aprox. 30 joints left
Assessment Of Location Safety Meeting	09/18/2010 16:40							Transport arrived on location at 1630 on 9.18.10, and left at 0600 on 9.19.10
Pre-Rig Up Safety Meeting	09/18/2010 19:45							Including entire cement crew
Rig-Up Equipment	09/18/2010 20:00							1 Elite #1; 2 Field storage bins; 1 Transport; 1 hard line from pump to floor; 2 lines to uprights. 9.625" compact head; # D0794
Rig-Up Completed	09/18/2010 20:30							
Pre-Job Safety Meeting	09/19/2010 00:45							Including everyone on location
Start Job	09/19/2010 01:03							TD 2730; TP2711 ; SJ 56 ; OH 14.75 ; CASING 9.625, 36#; MUD 9.4 ppg;
Other	09/19/2010 01:04		2	2			125.0	Fill lines
Pressure Test	09/19/2010 01:06						2690.0	PSI test good, no leaks.
Pump Spacer 1	09/19/2010 01:12		5	20			228.0	20 BBL fresh water.
Pump Spacer 2	09/19/2010 01:18		5	20			280.0	20 BBL Mud Flush III

Sold To #: 344034

Ship To #: 2808171

Quote #:

Sales Order #:

7629150

SUMMIT Version: 7.20.130

Sundav. September 19. 2010 09:46:00

Cementing Job Log

Activity Description	Date/Time	Cht #	Rate bbl/min	Volume bbl		Pressure psig		Comments
				Stage	Total	Tubing	Casing	
Pump Spacer 1	09/19/2010 01:31		4	20			152.0	20 BBL fresh water
Pump Lead Cement	09/19/2010 01:40		6	374			240.0	890 sks Lead cement, 12.3 ppg; 2.33 cf3; 12.62 gal/sk. 160 sks of Lead left on location from last job.
Pump Tail Cement	09/19/2010 03:08		7	59			260.0	160 sks Tail cement, 12.8 ppg; 2.07 cf3; 10.67 gal/sk.
Shutdown	09/19/2010 03:19							
Drop Plug	09/19/2010 03:19							Plug left container.
Pump Displacement	09/19/2010 03:20		6.5	70				Fresh water displacement
Slow Rate	09/19/2010 03:32		2	125				Slowed rate early to let dredge pump keep up
Bump Plug	09/19/2010 04:42				205			Bumped plug took 500 psi over.
Check Floats	09/19/2010 04:47							Floats held. BBL back.
Pump Water	09/19/2010 05:00		2	10			1400.0	Pump ten BBL's sugar water through parasite string. had to bump it three times to clear line
Shutdown	09/19/2010 05:30							Shut down parasite string cleared.
Pressure Up Well	09/19/2010 05:44						1500.0	Pressure test casing at 1500 PSI for 15 min.
Release Casing Pressure	09/19/2010 06:00							Pressure test on casing was good.
End Job	09/19/2010 06:03							Lost circulation for about twenty BBL's during cement. Had good circulation throughout rest of job.
Start Job	09/19/2010 08:28							Top Out job # 1
Pump Tail Cement	09/19/2010 08:29		1.5	60			.0	Top Out cement. Used extra lead cement from job and mixed it at 13 ppg.
Other	09/19/2010 08:30		1.5	1			.0	Clear lines with 1 BBL fresh water.
End Job	09/19/2010 08:32							Got cement to surface.

Sold To # : 344034

Ship To # : 2808171

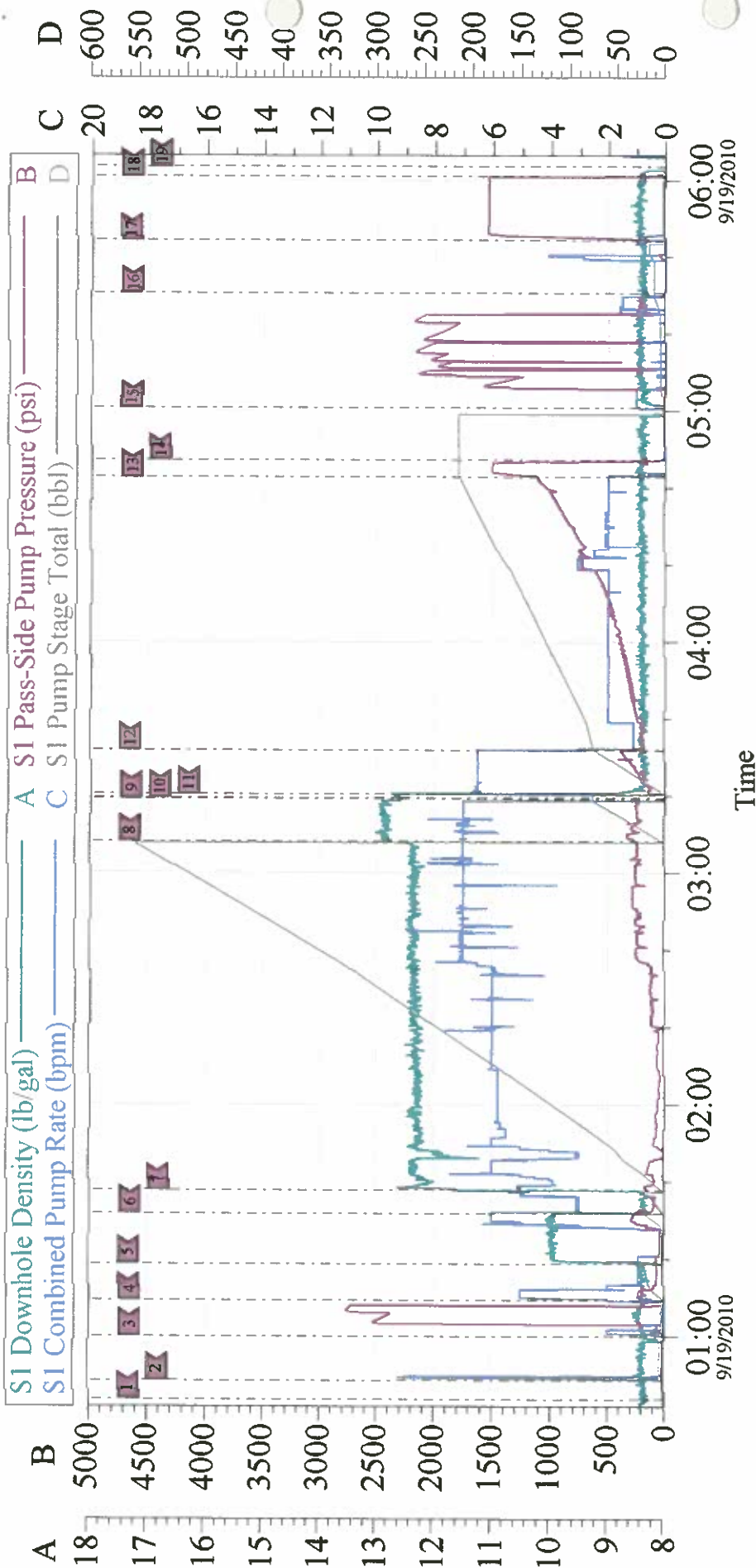
Quote # :

Sales Order # : 7629150

SUMMIT Version: 7.20.130

Sunday, September 19, 2010 09:46:00

OXY 9.625" SURFACE CC 697-09-50B



Customer: OXY	Job Date: 19-Sep-2010	Sales Order #: 7629150
Well Description: CCV 697-09-50B	Job Type: 9.625" SURFACE	ADC Used: YES
Company Rep: MARCO SILVA	Cement Supervisor: ED ARNOLD	Elite # 1: TODD DUBON