



Denver Division- Colorado

DJ - Hereford Ranch

Critter Creek 12-08H

Critter Creek 12-08H

Original Wellbore

Plan: APD

Standard Planning Report

26 January, 2011

Database:	EDM 2003.21 Single User Db	Local Co-ordinate Reference:	Well Critter Creek 12-08H
Company:	Denver Division- Colorado	TVD Reference:	Rig @ 5322.0ft
Project:	DJ - Hereford Ranch	MD Reference:	Rig @ 5322.0ft
Site:	Critter Creek 12-08H	North Reference:	True
Well:	Critter Creek 12-08H	Survey Calculation Method:	Minimum Curvature
Wellbore:	Original Wellbore		
Design:	APD		

Project	DJ - Hereford Ranch, Weld County		
Map System:	US State Plane 1927 (Exact solution)	System Datum:	Mean Sea Level
Geo Datum:	NAD 1927 (NADCON CONUS)		
Map Zone:	Colorado North 501		

Site		Critter Creek 12-08H			
Site Position:		Northing:	583,610.49 ft	Latitude:	40° 55' 50.441 N
From:	Lat/Long	Easting:	2,290,492.96 ft	Longitude:	104° 26' 55.500 W
Position Uncertainty:	0.0 ft	Slot Radius:	"	Grid Convergence:	0.68 °

Well	Critter Creek 12-08H					
Well Position	+N/-S	0.0 ft	Northing:	583,610.49 ft	Latitude:	40° 55' 50.441 N
	+E/-W	0.0 ft	Easting:	2,290,492.96 ft	Longitude:	104° 26' 55.500 W
Position Uncertainty		0.0 ft	Wellhead Elevation:	ft	Ground Level:	5,297.0 ft

Wellbore	Original Wellbore				
Magnetics	Model Name	Sample Date	Declination (°)	Dip Angle (°)	Field Strength (nT)
	IGRF200510	12/31/2009	8.90	67.59	53,609

Design	APD			
Audit Notes:				
Version:	Phase:	PROTOTYPE	Tie On Depth:	0.0
Vertical Section:	Depth From (TVD)	+N/-S (ft)	+E/-W (ft)	Direction (°)
	0.0	0.0	0.0	313.35

Plan Sections										
Measured Depth (ft)	Inclination (°)	Azimuth (°)	Vertical Depth (ft)	+N/-S (ft)	+E/-W (ft)	Dogleg Rate (°/100ft)	Build Rate (°/100ft)	Turn Rate (°/100ft)	TFO (°)	Target
0.0	0.00	0.00	0.0	0.0	0.0	0.00	0.00	0.00	0.00	
6,946.5	0.00	0.00	6,946.5	0.0	0.0	0.00	0.00	0.00	0.00	
7,696.6	90.00	300.00	7,424.0	238.8	-413.5	12.00	12.00	0.00	300.00	
8,315.6	90.00	315.48	7,424.0	616.5	-901.6	2.50	0.00	2.50	90.00	Critter Creek 12-08H
12,905.2	90.00	315.48	7,424.0	3,888.7	-4,119.8	0.00	0.00	0.00	0.00	Critter Creek 12-08H



EOG Resources

Planning Report

Database:	EDM 2003.21 Single User Db	Local Co-ordinate Reference:	Well Critter Creek 12-08H
Company:	Denver Division- Colorado	TVD Reference:	Rig @ 5322.0ft
Project:	DJ - Hereford Ranch	MD Reference:	Rig @ 5322.0ft
Site:	Critter Creek 12-08H	North Reference:	True
Well:	Critter Creek 12-08H	Survey Calculation Method:	Minimum Curvature
Wellbore:	Original Wellbore		
Design:	APD		

Planned Survey									
Measured Depth (ft)	Inclination (°)	Azimuth (°)	Vertical Depth (ft)	+N/-S (ft)	+E/-W (ft)	Vertical Section (ft)	Dogleg Rate (°/100ft)	Build Rate (°/100ft)	Turn Rate (°/100ft)
0.0	0.00	0.00	0.0	0.0	0.0	0.0	0.00	0.00	0.00
100.0	0.00	0.00	100.0	0.0	0.0	0.0	0.00	0.00	0.00
200.0	0.00	0.00	200.0	0.0	0.0	0.0	0.00	0.00	0.00
300.0	0.00	0.00	300.0	0.0	0.0	0.0	0.00	0.00	0.00
400.0	0.00	0.00	400.0	0.0	0.0	0.0	0.00	0.00	0.00
500.0	0.00	0.00	500.0	0.0	0.0	0.0	0.00	0.00	0.00
600.0	0.00	0.00	600.0	0.0	0.0	0.0	0.00	0.00	0.00
700.0	0.00	0.00	700.0	0.0	0.0	0.0	0.00	0.00	0.00
800.0	0.00	0.00	800.0	0.0	0.0	0.0	0.00	0.00	0.00
900.0	0.00	0.00	900.0	0.0	0.0	0.0	0.00	0.00	0.00
1,000.0	0.00	0.00	1,000.0	0.0	0.0	0.0	0.00	0.00	0.00
1,100.0	0.00	0.00	1,100.0	0.0	0.0	0.0	0.00	0.00	0.00
1,200.0	0.00	0.00	1,200.0	0.0	0.0	0.0	0.00	0.00	0.00
1,300.0	0.00	0.00	1,300.0	0.0	0.0	0.0	0.00	0.00	0.00
1,400.0	0.00	0.00	1,400.0	0.0	0.0	0.0	0.00	0.00	0.00
1,450.0	0.00	0.00	1,450.0	0.0	0.0	0.0	0.00	0.00	0.00
9 5/8"									
1,500.0	0.00	0.00	1,500.0	0.0	0.0	0.0	0.00	0.00	0.00
1,600.0	0.00	0.00	1,600.0	0.0	0.0	0.0	0.00	0.00	0.00
1,700.0	0.00	0.00	1,700.0	0.0	0.0	0.0	0.00	0.00	0.00
1,800.0	0.00	0.00	1,800.0	0.0	0.0	0.0	0.00	0.00	0.00
1,900.0	0.00	0.00	1,900.0	0.0	0.0	0.0	0.00	0.00	0.00
2,000.0	0.00	0.00	2,000.0	0.0	0.0	0.0	0.00	0.00	0.00
2,100.0	0.00	0.00	2,100.0	0.0	0.0	0.0	0.00	0.00	0.00
2,200.0	0.00	0.00	2,200.0	0.0	0.0	0.0	0.00	0.00	0.00
2,300.0	0.00	0.00	2,300.0	0.0	0.0	0.0	0.00	0.00	0.00
2,400.0	0.00	0.00	2,400.0	0.0	0.0	0.0	0.00	0.00	0.00
2,500.0	0.00	0.00	2,500.0	0.0	0.0	0.0	0.00	0.00	0.00
2,600.0	0.00	0.00	2,600.0	0.0	0.0	0.0	0.00	0.00	0.00
2,700.0	0.00	0.00	2,700.0	0.0	0.0	0.0	0.00	0.00	0.00
2,800.0	0.00	0.00	2,800.0	0.0	0.0	0.0	0.00	0.00	0.00
2,900.0	0.00	0.00	2,900.0	0.0	0.0	0.0	0.00	0.00	0.00
3,000.0	0.00	0.00	3,000.0	0.0	0.0	0.0	0.00	0.00	0.00
3,100.0	0.00	0.00	3,100.0	0.0	0.0	0.0	0.00	0.00	0.00
3,200.0	0.00	0.00	3,200.0	0.0	0.0	0.0	0.00	0.00	0.00
3,300.0	0.00	0.00	3,300.0	0.0	0.0	0.0	0.00	0.00	0.00
3,400.0	0.00	0.00	3,400.0	0.0	0.0	0.0	0.00	0.00	0.00
3,500.0	0.00	0.00	3,500.0	0.0	0.0	0.0	0.00	0.00	0.00
3,600.0	0.00	0.00	3,600.0	0.0	0.0	0.0	0.00	0.00	0.00
3,700.0	0.00	0.00	3,700.0	0.0	0.0	0.0	0.00	0.00	0.00
3,800.0	0.00	0.00	3,800.0	0.0	0.0	0.0	0.00	0.00	0.00
3,900.0	0.00	0.00	3,900.0	0.0	0.0	0.0	0.00	0.00	0.00
4,000.0	0.00	0.00	4,000.0	0.0	0.0	0.0	0.00	0.00	0.00
4,100.0	0.00	0.00	4,100.0	0.0	0.0	0.0	0.00	0.00	0.00
4,200.0	0.00	0.00	4,200.0	0.0	0.0	0.0	0.00	0.00	0.00
4,300.0	0.00	0.00	4,300.0	0.0	0.0	0.0	0.00	0.00	0.00
4,400.0	0.00	0.00	4,400.0	0.0	0.0	0.0	0.00	0.00	0.00
4,500.0	0.00	0.00	4,500.0	0.0	0.0	0.0	0.00	0.00	0.00
4,600.0	0.00	0.00	4,600.0	0.0	0.0	0.0	0.00	0.00	0.00
4,700.0	0.00	0.00	4,700.0	0.0	0.0	0.0	0.00	0.00	0.00
4,800.0	0.00	0.00	4,800.0	0.0	0.0	0.0	0.00	0.00	0.00
4,900.0	0.00	0.00	4,900.0	0.0	0.0	0.0	0.00	0.00	0.00
5,000.0	0.00	0.00	5,000.0	0.0	0.0	0.0	0.00	0.00	0.00
5,100.0	0.00	0.00	5,100.0	0.0	0.0	0.0	0.00	0.00	0.00

Database:	EDM 2003.21 Single User Db	Local Co-ordinate Reference:	Well Critter Creek 12-08H
Company:	Denver Division- Colorado	TVD Reference:	Rig @ 5322.0ft
Project:	DJ - Hereford Ranch	MD Reference:	Rig @ 5322.0ft
Site:	Critter Creek 12-08H	North Reference:	True
Well:	Critter Creek 12-08H	Survey Calculation Method:	Minimum Curvature
Wellbore:	Original Wellbore		
Design:	APD		

Planned Survey									
Measured Depth (ft)	Inclination (°)	Azimuth (°)	Vertical Depth (ft)	+N/-S (ft)	+E/-W (ft)	Vertical Section (ft)	Dogleg Rate (°/100ft)	Build Rate (°/100ft)	Turn Rate (°/100ft)
5,200.0	0.00	0.00	5,200.0	0.0	0.0	0.0	0.00	0.00	0.00
5,300.0	0.00	0.00	5,300.0	0.0	0.0	0.0	0.00	0.00	0.00
5,400.0	0.00	0.00	5,400.0	0.0	0.0	0.0	0.00	0.00	0.00
5,500.0	0.00	0.00	5,500.0	0.0	0.0	0.0	0.00	0.00	0.00
5,600.0	0.00	0.00	5,600.0	0.0	0.0	0.0	0.00	0.00	0.00
5,700.0	0.00	0.00	5,700.0	0.0	0.0	0.0	0.00	0.00	0.00
5,800.0	0.00	0.00	5,800.0	0.0	0.0	0.0	0.00	0.00	0.00
5,900.0	0.00	0.00	5,900.0	0.0	0.0	0.0	0.00	0.00	0.00
6,000.0	0.00	0.00	6,000.0	0.0	0.0	0.0	0.00	0.00	0.00
6,100.0	0.00	0.00	6,100.0	0.0	0.0	0.0	0.00	0.00	0.00
6,200.0	0.00	0.00	6,200.0	0.0	0.0	0.0	0.00	0.00	0.00
6,300.0	0.00	0.00	6,300.0	0.0	0.0	0.0	0.00	0.00	0.00
6,400.0	0.00	0.00	6,400.0	0.0	0.0	0.0	0.00	0.00	0.00
6,500.0	0.00	0.00	6,500.0	0.0	0.0	0.0	0.00	0.00	0.00
6,600.0	0.00	0.00	6,600.0	0.0	0.0	0.0	0.00	0.00	0.00
6,700.0	0.00	0.00	6,700.0	0.0	0.0	0.0	0.00	0.00	0.00
6,800.0	0.00	0.00	6,800.0	0.0	0.0	0.0	0.00	0.00	0.00
6,900.0	0.00	0.00	6,900.0	0.0	0.0	0.0	0.00	0.00	0.00
6,946.5	0.00	0.00	6,946.5	0.0	0.0	0.0	0.00	0.00	0.00
7,000.0	6.42	300.00	6,999.9	1.5	-2.6	2.9	12.00	12.00	0.00
7,100.0	18.42	300.00	7,097.4	12.2	-21.2	23.8	12.00	12.00	0.00
7,200.0	30.42	300.00	7,188.3	32.9	-56.9	63.9	12.00	12.00	0.00
7,300.0	42.42	300.00	7,268.6	62.5	-108.2	121.6	12.00	12.00	0.00
7,400.0	54.42	300.00	7,334.8	99.8	-172.9	194.3	12.00	12.00	0.00
7,500.0	66.42	300.00	7,384.1	143.2	-248.1	278.7	12.00	12.00	0.00
7,600.0	78.41	300.00	7,414.3	190.8	-330.5	371.3	12.00	12.00	0.00
7,696.6	90.00	300.00	7,424.0	238.8	-413.6	464.6	11.99	11.99	0.00
7"									
7,700.0	90.00	300.09	7,424.0	240.5	-416.5	468.0	2.53	0.00	2.53
7,800.0	90.00	302.59	7,424.0	292.5	-501.9	565.8	2.50	0.00	2.50
7,900.0	90.00	305.09	7,424.0	348.2	-585.0	664.4	2.50	0.00	2.50
8,000.0	90.00	307.59	7,424.0	407.4	-665.5	763.6	2.50	0.00	2.50
8,100.0	90.00	310.09	7,424.0	470.1	-743.4	863.3	2.50	0.00	2.50
8,200.0	90.00	312.59	7,424.0	536.1	-818.5	963.2	2.50	0.00	2.50
8,300.0	90.00	315.09	7,424.0	605.4	-890.6	1,063.2	2.50	0.00	2.50
8,315.6	90.00	315.48	7,424.0	616.5	-901.6	1,078.8	2.50	0.00	2.50
8,400.0	90.00	315.48	7,424.0	676.7	-960.8	1,163.2	0.00	0.00	0.00
8,500.0	90.00	315.48	7,424.0	748.0	-1,030.9	1,263.1	0.00	0.00	0.00
8,600.0	90.00	315.48	7,424.0	819.3	-1,101.0	1,363.0	0.00	0.00	0.00
8,700.0	90.00	315.48	7,424.0	890.5	-1,171.1	1,462.9	0.00	0.00	0.00
8,800.0	90.00	315.48	7,424.0	961.8	-1,241.3	1,562.9	0.00	0.00	0.00
8,900.0	90.00	315.48	7,424.0	1,033.1	-1,311.4	1,662.8	0.00	0.00	0.00
9,000.0	90.00	315.48	7,424.0	1,104.4	-1,381.5	1,762.7	0.00	0.00	0.00
9,100.0	90.00	315.48	7,424.0	1,175.7	-1,451.6	1,862.7	0.00	0.00	0.00
9,200.0	90.00	315.48	7,424.0	1,247.0	-1,521.7	1,962.6	0.00	0.00	0.00
9,300.0	90.00	315.48	7,424.0	1,318.3	-1,591.9	2,062.5	0.00	0.00	0.00
9,400.0	90.00	315.48	7,424.0	1,389.6	-1,662.0	2,162.5	0.00	0.00	0.00
9,500.0	90.00	315.48	7,424.0	1,460.9	-1,732.1	2,262.4	0.00	0.00	0.00
9,600.0	90.00	315.48	7,424.0	1,532.2	-1,802.2	2,362.3	0.00	0.00	0.00
9,700.0	90.00	315.48	7,424.0	1,603.5	-1,872.3	2,462.3	0.00	0.00	0.00
9,800.0	90.00	315.48	7,424.0	1,674.8	-1,942.5	2,562.2	0.00	0.00	0.00
9,900.0	90.00	315.48	7,424.0	1,746.1	-2,012.6	2,662.1	0.00	0.00	0.00
10,000.0	90.00	315.48	7,424.0	1,817.4	-2,082.7	2,762.0	0.00	0.00	0.00

Database:	EDM 2003.21 Single User Db	Local Co-ordinate Reference:	Well Critter Creek 12-08H
Company:	Denver Division- Colorado	TVD Reference:	Rig @ 5322.0ft
Project:	DJ - Hereford Ranch	MD Reference:	Rig @ 5322.0ft
Site:	Critter Creek 12-08H	North Reference:	True
Well:	Critter Creek 12-08H	Survey Calculation Method:	Minimum Curvature
Wellbore:	Original Wellbore		
Design:	APD		

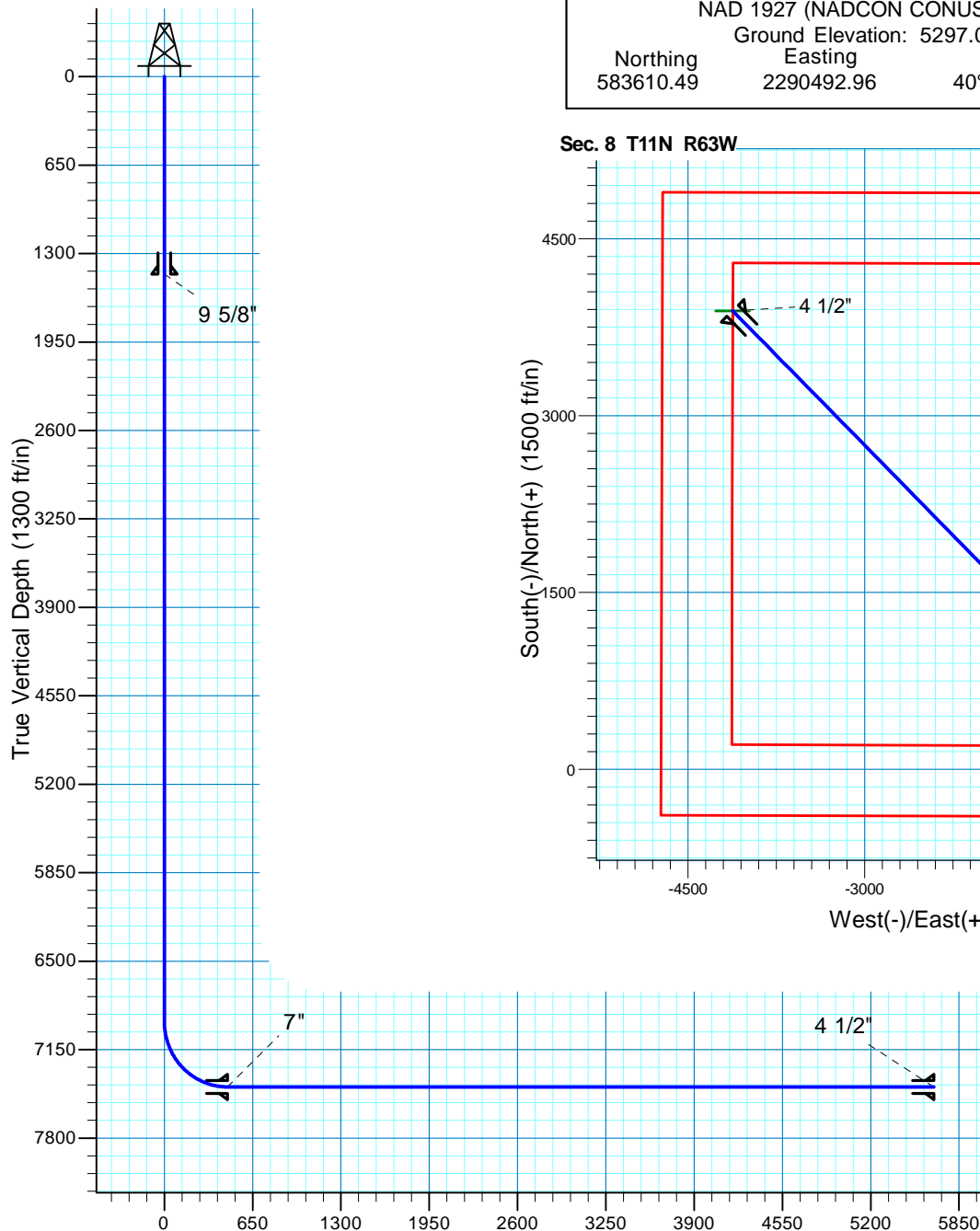
Planned Survey									
Measured Depth (ft)	Inclination (°)	Azimuth (°)	Vertical Depth (ft)	+N/-S (ft)	+E/-W (ft)	Vertical Section (ft)	Dogleg Rate (°/100ft)	Build Rate (°/100ft)	Turn Rate (°/100ft)
10,100.0	90.00	315.48	7,424.0	1,888.7	-2,152.8	2,862.0	0.00	0.00	0.00
10,200.0	90.00	315.48	7,424.0	1,960.0	-2,222.9	2,961.9	0.00	0.00	0.00
10,300.0	90.00	315.48	7,424.0	2,031.3	-2,293.1	3,061.8	0.00	0.00	0.00
10,400.0	90.00	315.48	7,424.0	2,102.6	-2,363.2	3,161.8	0.00	0.00	0.00
10,500.0	90.00	315.48	7,424.0	2,173.9	-2,433.3	3,261.7	0.00	0.00	0.00
10,600.0	90.00	315.48	7,424.0	2,245.2	-2,503.4	3,361.6	0.00	0.00	0.00
10,700.0	90.00	315.48	7,424.0	2,316.5	-2,573.5	3,461.6	0.00	0.00	0.00
10,800.0	90.00	315.48	7,424.0	2,387.8	-2,643.7	3,561.5	0.00	0.00	0.00
10,900.0	90.00	315.48	7,424.0	2,459.1	-2,713.8	3,661.4	0.00	0.00	0.00
11,000.0	90.00	315.48	7,424.0	2,530.4	-2,783.9	3,761.4	0.00	0.00	0.00
11,100.0	90.00	315.48	7,424.0	2,601.7	-2,854.0	3,861.3	0.00	0.00	0.00
11,200.0	90.00	315.48	7,424.0	2,673.0	-2,924.1	3,961.2	0.00	0.00	0.00
11,300.0	90.00	315.48	7,424.0	2,744.3	-2,994.3	4,061.2	0.00	0.00	0.00
11,400.0	90.00	315.48	7,424.0	2,815.5	-3,064.4	4,161.1	0.00	0.00	0.00
11,500.0	90.00	315.48	7,424.0	2,886.8	-3,134.5	4,261.0	0.00	0.00	0.00
11,600.0	90.00	315.48	7,424.0	2,958.1	-3,204.6	4,360.9	0.00	0.00	0.00
11,700.0	90.00	315.48	7,424.0	3,029.4	-3,274.7	4,460.9	0.00	0.00	0.00
11,800.0	90.00	315.48	7,424.0	3,100.7	-3,344.9	4,560.8	0.00	0.00	0.00
11,900.0	90.00	315.48	7,424.0	3,172.0	-3,415.0	4,660.7	0.00	0.00	0.00
12,000.0	90.00	315.48	7,424.0	3,243.3	-3,485.1	4,760.7	0.00	0.00	0.00
12,100.0	90.00	315.48	7,424.0	3,314.6	-3,555.2	4,860.6	0.00	0.00	0.00
12,200.0	90.00	315.48	7,424.0	3,385.9	-3,625.3	4,960.5	0.00	0.00	0.00
12,300.0	90.00	315.48	7,424.0	3,457.2	-3,695.5	5,060.5	0.00	0.00	0.00
12,400.0	90.00	315.48	7,424.0	3,528.5	-3,765.6	5,160.4	0.00	0.00	0.00
12,500.0	90.00	315.48	7,424.0	3,599.8	-3,835.7	5,260.3	0.00	0.00	0.00
12,600.0	90.00	315.48	7,424.0	3,671.1	-3,905.8	5,360.3	0.00	0.00	0.00
12,700.0	90.00	315.48	7,424.0	3,742.4	-3,975.9	5,460.2	0.00	0.00	0.00
12,800.0	90.00	315.48	7,424.0	3,813.7	-4,046.1	5,560.1	0.00	0.00	0.00
12,900.0	90.00	315.48	7,424.0	3,885.0	-4,116.2	5,660.0	0.00	0.00	0.00
12,905.2	90.00	315.48	7,424.0	3,888.7	-4,119.8	5,665.2	0.00	0.00	0.00

Critter Creek 12-08H

Section 8 T11N R63W
Weld County, CO



Surface Location			
NAD 1927 (NADCON CONUS)		Colorado North 501	
Ground Elevation: 5297.0		Rig @ 5322.0ft	
Northing	Easting	Latitude	Longitude
583610.49	2290492.96	40° 55' 50.441 N	104° 26' 55.500 W



SECTION DETAILS

Sec	MD	Inc	Azi	TVD	+N/-S	+E/-W	DLeg	TFace	VSec	Target
1	0.0	0.00	0.00	0.0	0.0	0.0	0.00	0.00	0.0	
2	6946.5	0.00	0.00	6946.5	0.0	0.0	0.00	0.00	0.0	
3	7696.6	90.00	300.00	7424.0	238.8	-413.5	12.00	300.00	464.6	
4	8315.6	90.00	315.48	7424.0	616.5	-901.6	2.50	90.00	1078.8	Critter Creek 12-08H (BHL-APD)
5	12905.2	90.00	315.48	7424.0	3888.7	-4119.8	0.00	0.00	5665.2	Critter Creek 12-08H (BHL-APD)

TARGET DETAILS

Name	TVD	+N/-S	+E/-W	Northing	Easting	Latitude	Longitude	Shape
Critter Creek 12-08H (BHL-APD)	7424.0	3888.7	-4119.8	587450.07	2286327.34	40° 56' 28.860 N	104° 27' 49.180 W	P oint