

ENSIGN

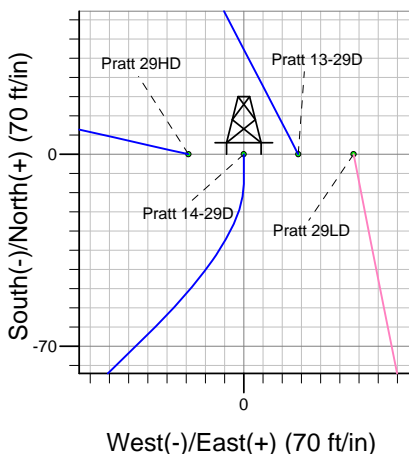
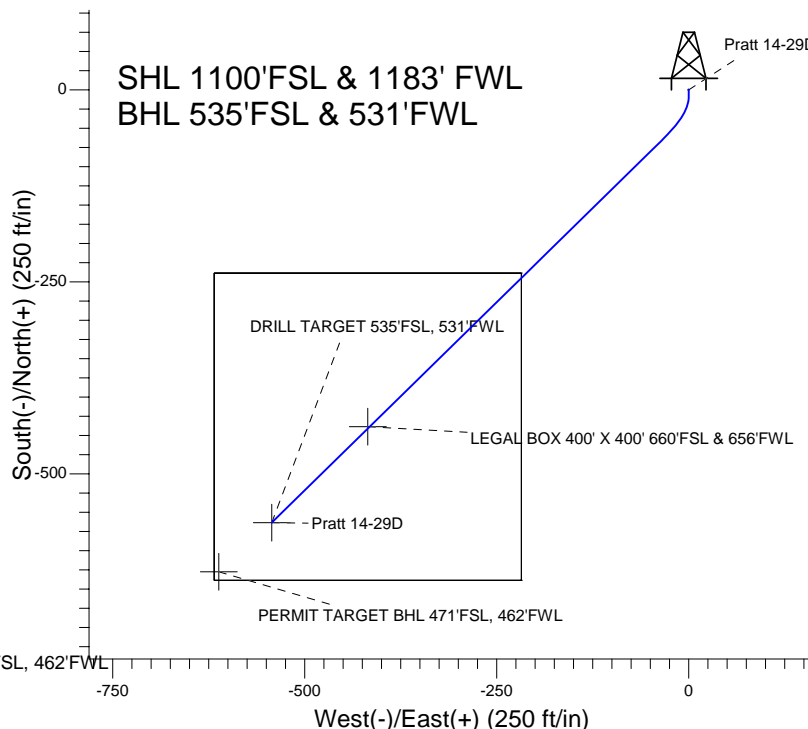
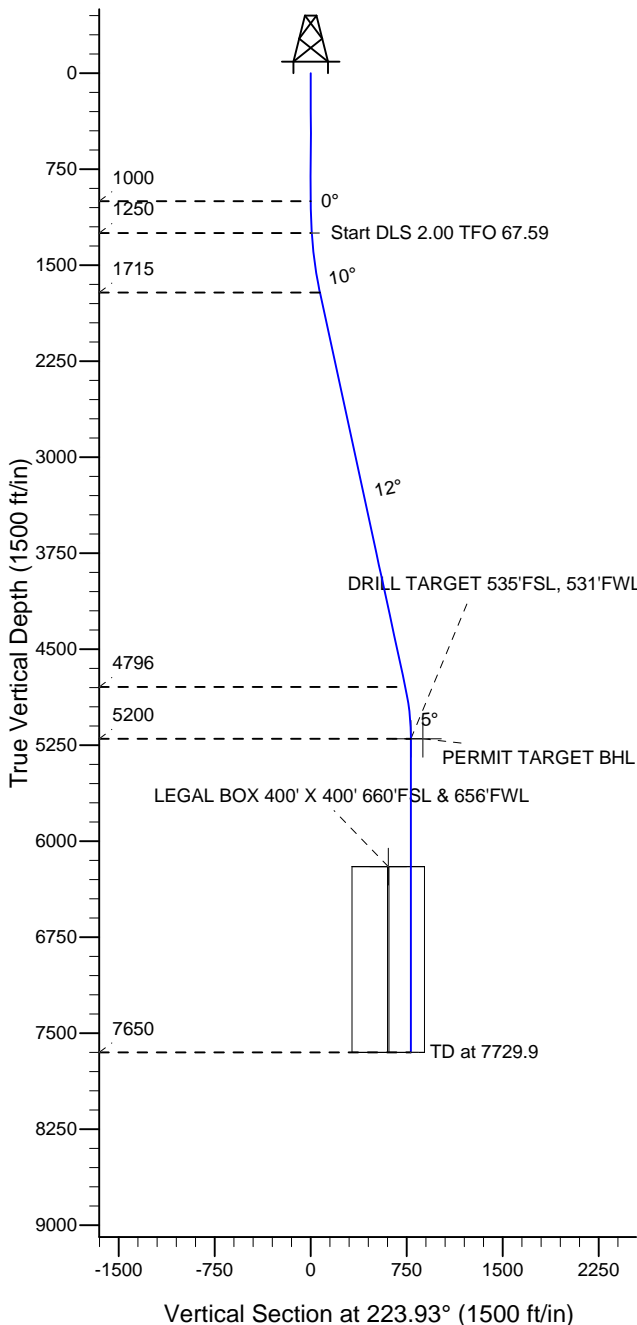
Directional

Well Name: Pratt 14-29D

Surface Location: Pratt 24-29D Pad Sec.29-T1N-R68W
 North American Datum 1983 , US State Plane 1983 , Colorado Northern Zone
 Ground Elevation: 5141.0

+N/-S+E/-W Northing Easting Latitude Longitude Slot
 0.0 0.0 1249667.63 3130789.73 40° 1' 4.004 N 105° 1' 58.894 W
 Original Well Elev WELL @ 5154.0ft (Original Well Elev)

Synergy Resources



Pratt 14-29D
 Plan #2 (12-30-10)
 17:59, December 30 2010

Azimuths to True North
 Magnetic North: 9.03°

Magnetic Field
 Strength: 52946.1snT
 Dip Angle: 66.71°
 Date: 12/29/2010
 Model: IGRF2010

WELLBORE TARGET DETAILS (LAT/LONG)

Name	TVD	+N/-S	+E/-W	Latitude	Longitude	Shape
DRILL TARGET 535'FSL, 531'FWL	5200.0	-563.3	-542.7	40° 0' 58.438 N	105° 2' 5.869 W	Point
PERMIT TARGET BHL 471'FSL, 462'FWL	5200.0	-627.3	-611.7	40° 0' 57.805 N	105° 2' 6.756 W	Point
LEGAL BOX 400' X 400' 660'FSL & 656'FWL	6200.0	-438.3	-417.7	40° 0' 59.673 N	105° 2' 4.262 W	Rectangle (Sides: L400.0 W400.0)

SECTION DETAILS

Sec	MD	Inc	Azi	TVD	+N/-S	+E/-W	DLeg	TFace	VSec	Target
1	0.0	0.00	0.00	0.0	0.0	0.0	0.00	0.00	0.0	
2	1000.0	0.00	0.00	1000.0	0.0	0.0	0.00	0.00	0.0	
3	1250.0	5.00	180.00	1249.7	-10.9	0.0	2.00	180.00	7.9	
4	1720.2	12.21	225.58	1714.7	-66.3	-35.6	2.00	67.59	72.5	
5	4872.9	12.21	225.58	4796.0	-533.1	-511.8	0.00	0.00	739.0	
6	5279.9	0.00	0.00	5200.0	-563.3	-542.7	3.00	180.00	782.2	DRILL TARGET 535'FSL, 531'FWL
7	7729.9	0.00	0.00	7650.0	-563.3	-542.7	0.00	0.00	782.2	



Directional

Synergy Resources

SEC.29-T1N-R68W

Pratt 24-29D Pad Sec.29-T1N-R68W

Pratt 14-29D

Wellbore #1

Plan: Plan #2 (12-30-10)

Standard Planning Report

30 December, 2010

Database:	Landmark	Local Co-ordinate Reference:	Well Pratt 14-29D
Company:	Synergy Resources	TVD Reference:	WELL @ 5154.0ft (Original Well Elev)
Project:	SEC.29-T1N-R68W	MD Reference:	WELL @ 5154.0ft (Original Well Elev)
Site:	Pratt 24-29D Pad Sec.29-T1N-R68W	North Reference:	True
Well:	Pratt 14-29D	Survey Calculation Method:	Minimum Curvature
Wellbore:	Wellbore #1		
Design:	Plan #2 (12-30-10)		

Project	SEC.29-T1N-R68W, Weld County, Colorado		
Map System:	US State Plane 1983	System Datum:	Mean Sea Level
Geo Datum:	North American Datum 1983		
Map Zone:	Colorado Northern Zone		Using geodetic scale factor

Site Pratt 24-29D Pad Sec.29-T1N-R68W					
Site Position:		Northing:		1,249,668.17 ft	
From:	Lat/Long	Easting:		3,130,889.72 ft	
Position Uncertainty:		0.0 ft		Slot Radius: "	
				Grid Convergence: 0.30 °	
				Latitude: 40° 1' 4.004 N	
				Longitude: 105° 1' 57.608 W	

Well	Pratt 14-29D					
Well Position	+N/-S	0.0 ft	Northing:	1,249,667.63 ft	Latitude:	40° 1' 4.004 N
	+E/-W	-100.0 ft	Easting:	3,130,789.73 ft	Longitude:	105° 1' 58.894 W
Position Uncertainty		0.0 ft	Wellhead Elevation:	ft	Ground Level:	5,141.0 ft

Wellbore	Wellbore #1				
Magnetics	Model Name	Sample Date	Declination (°)	Dip Angle (°)	Field Strength (nT)
	IGRF2010	12/29/2010	9.03	66.71	52,946

Design	Plan #2 (12-30-10)			
Audit Notes:				
Version:	Phase:	PROTOTYPE	Tie On Depth:	0.0
Vertical Section:	Depth From (TVD) (ft)	+N/-S (ft)	+E/-W (ft)	Direction (°)
	0.0	0.0	0.0	223.93

Plan Sections										
Measured Depth (ft)	Inclination (°)	Azimuth (°)	Vertical Depth (ft)	+N/-S (ft)	+E/-W (ft)	Dogleg Rate (°/100ft)	Build Rate (°/100ft)	Turn Rate (°/100ft)	TFO (°)	Target
0.0	0.00	0.00	0.0	0.0	0.0	0.00	0.00	0.00	0.00	
1,000.0	0.00	0.00	1,000.0	0.0	0.0	0.00	0.00	0.00	0.00	
1,250.0	5.00	180.00	1,249.7	-10.9	0.0	2.00	2.00	0.00	180.00	
1,720.2	12.21	225.58	1,714.7	-66.3	-35.6	2.00	1.53	9.69	67.59	
4,872.9	12.21	225.58	4,796.0	-533.1	-511.8	0.00	0.00	0.00	0.00	
5,279.9	0.00	0.00	5,200.0	-563.3	-542.7	3.00	-3.00	0.00	180.00	DRILL TARGET 53
7,729.9	0.00	0.00	7,650.0	-563.3	-542.7	0.00	0.00	0.00	0.00	

Database:	Landmark	Local Co-ordinate Reference:	Well Pratt 14-29D
Company:	Synergy Resources	TVD Reference:	WELL @ 5154.0ft (Original Well Elev)
Project:	SEC.29-T1N-R68W	MD Reference:	WELL @ 5154.0ft (Original Well Elev)
Site:	Pratt 24-29D Pad Sec.29-T1N-R68W	North Reference:	True
Well:	Pratt 14-29D	Survey Calculation Method:	Minimum Curvature
Wellbore:	Wellbore #1		
Design:	Plan #2 (12-30-10)		

Planned Survey									
Measured Depth (ft)	Inclination (°)	Azimuth (°)	Vertical Depth (ft)	+N/-S (ft)	+E/-W (ft)	Vertical Section (ft)	Dogleg Rate (°/100ft)	Build Rate (°/100ft)	Turn Rate (°/100ft)
0.0	0.00	0.00	0.0	0.0	0.0	0.0	0.00	0.00	0.00
50.0	0.00	0.00	50.0	0.0	0.0	0.0	0.00	0.00	0.00
100.0	0.00	0.00	100.0	0.0	0.0	0.0	0.00	0.00	0.00
150.0	0.00	0.00	150.0	0.0	0.0	0.0	0.00	0.00	0.00
200.0	0.00	0.00	200.0	0.0	0.0	0.0	0.00	0.00	0.00
250.0	0.00	0.00	250.0	0.0	0.0	0.0	0.00	0.00	0.00
300.0	0.00	0.00	300.0	0.0	0.0	0.0	0.00	0.00	0.00
350.0	0.00	0.00	350.0	0.0	0.0	0.0	0.00	0.00	0.00
400.0	0.00	0.00	400.0	0.0	0.0	0.0	0.00	0.00	0.00
450.0	0.00	0.00	450.0	0.0	0.0	0.0	0.00	0.00	0.00
500.0	0.00	0.00	500.0	0.0	0.0	0.0	0.00	0.00	0.00
550.0	0.00	0.00	550.0	0.0	0.0	0.0	0.00	0.00	0.00
600.0	0.00	0.00	600.0	0.0	0.0	0.0	0.00	0.00	0.00
650.0	0.00	0.00	650.0	0.0	0.0	0.0	0.00	0.00	0.00
700.0	0.00	0.00	700.0	0.0	0.0	0.0	0.00	0.00	0.00
750.0	0.00	0.00	750.0	0.0	0.0	0.0	0.00	0.00	0.00
800.0	0.00	0.00	800.0	0.0	0.0	0.0	0.00	0.00	0.00
850.0	0.00	0.00	850.0	0.0	0.0	0.0	0.00	0.00	0.00
900.0	0.00	0.00	900.0	0.0	0.0	0.0	0.00	0.00	0.00
8 5/8"									
950.0	0.00	0.00	950.0	0.0	0.0	0.0	0.00	0.00	0.00
1,000.0	0.00	0.00	1,000.0	0.0	0.0	0.0	0.00	0.00	0.00
1,050.0	1.00	180.00	1,050.0	-0.4	0.0	0.3	2.00	2.00	0.00
1,100.0	2.00	180.00	1,100.0	-1.7	0.0	1.3	2.00	2.00	0.00
1,150.0	3.00	180.00	1,149.9	-3.9	0.0	2.8	2.00	2.00	0.00
1,200.0	4.00	180.00	1,199.8	-7.0	0.0	5.0	2.00	2.00	0.00
1,250.0	5.00	180.00	1,249.7	-10.9	0.0	7.9	2.00	2.00	0.00
1,300.0	5.46	189.76	1,299.5	-15.4	-0.4	11.4	2.00	0.92	19.53
1,350.0	6.05	197.82	1,349.2	-20.3	-1.6	15.7	2.00	1.18	16.12
1,400.0	6.74	204.35	1,398.9	-25.5	-3.6	20.9	2.00	1.38	13.05
1,450.0	7.50	209.62	1,448.5	-31.0	-6.5	26.8	2.00	1.52	10.54
1,500.0	8.31	213.90	1,498.1	-36.8	-10.1	33.5	2.00	1.62	8.56
1,550.0	9.15	217.40	1,547.5	-43.0	-14.5	41.0	2.00	1.69	7.01
1,600.0	10.03	220.31	1,596.8	-49.4	-19.7	49.3	2.00	1.75	5.82
1,650.0	10.93	222.75	1,645.9	-56.2	-25.8	58.4	2.00	1.79	4.88
1,700.0	11.84	224.83	1,695.0	-63.4	-32.6	68.2	2.00	1.83	4.15
1,720.2	12.21	225.58	1,714.7	-66.3	-35.6	72.5	2.00	1.84	3.71
1,750.0	12.21	225.58	1,743.8	-70.7	-40.1	78.8	0.00	0.00	0.00
1,800.0	12.21	225.58	1,792.7	-78.1	-47.6	89.3	0.00	0.00	0.00
1,850.0	12.21	225.58	1,841.6	-85.5	-55.2	99.9	0.00	0.00	0.00
1,900.0	12.21	225.58	1,890.4	-92.9	-62.8	110.5	0.00	0.00	0.00
1,950.0	12.21	225.58	1,939.3	-100.3	-70.3	121.0	0.00	0.00	0.00
2,000.0	12.21	225.58	1,988.2	-107.7	-77.9	131.6	0.00	0.00	0.00
2,050.0	12.21	225.58	2,037.1	-115.1	-85.4	142.2	0.00	0.00	0.00
2,100.0	12.21	225.58	2,085.9	-122.5	-93.0	152.8	0.00	0.00	0.00
2,150.0	12.21	225.58	2,134.8	-130.0	-100.5	163.3	0.00	0.00	0.00
2,200.0	12.21	225.58	2,183.7	-137.4	-108.1	173.9	0.00	0.00	0.00
2,250.0	12.21	225.58	2,232.5	-144.8	-115.6	184.5	0.00	0.00	0.00
2,300.0	12.21	225.58	2,281.4	-152.2	-123.2	195.0	0.00	0.00	0.00
2,350.0	12.21	225.58	2,330.3	-159.6	-130.7	205.6	0.00	0.00	0.00
2,400.0	12.21	225.58	2,379.1	-167.0	-138.3	216.2	0.00	0.00	0.00
2,450.0	12.21	225.58	2,428.0	-174.4	-145.8	226.8	0.00	0.00	0.00
2,500.0	12.21	225.58	2,476.9	-181.8	-153.4	237.3	0.00	0.00	0.00
2,550.0	12.21	225.58	2,525.7	-189.2	-160.9	247.9	0.00	0.00	0.00

Database:	Landmark	Local Co-ordinate Reference:	Well Pratt 14-29D
Company:	Synergy Resources	TVD Reference:	WELL @ 5154.0ft (Original Well Elev)
Project:	SEC.29-T1N-R68W	MD Reference:	WELL @ 5154.0ft (Original Well Elev)
Site:	Pratt 24-29D Pad Sec.29-T1N-R68W	North Reference:	True
Well:	Pratt 14-29D	Survey Calculation Method:	Minimum Curvature
Wellbore:	Wellbore #1		
Design:	Plan #2 (12-30-10)		

Planned Survey									
Measured Depth (ft)	Inclination (°)	Azimuth (°)	Vertical Depth (ft)	+N/-S (ft)	+E/-W (ft)	Vertical Section (ft)	Dogleg Rate (°/100ft)	Build Rate (°/100ft)	Turn Rate (°/100ft)
2,600.0	12.21	225.58	2,574.6	-196.6	-168.5	258.5	0.00	0.00	0.00
2,650.0	12.21	225.58	2,623.5	-204.0	-176.1	269.0	0.00	0.00	0.00
2,700.0	12.21	225.58	2,672.3	-211.4	-183.6	279.6	0.00	0.00	0.00
2,750.0	12.21	225.58	2,721.2	-218.8	-191.2	290.2	0.00	0.00	0.00
2,800.0	12.21	225.58	2,770.1	-226.2	-198.7	300.8	0.00	0.00	0.00
2,850.0	12.21	225.58	2,819.0	-233.6	-206.3	311.3	0.00	0.00	0.00
2,900.0	12.21	225.58	2,867.8	-241.0	-213.8	321.9	0.00	0.00	0.00
2,950.0	12.21	225.58	2,916.7	-248.4	-221.4	332.5	0.00	0.00	0.00
3,000.0	12.21	225.58	2,965.6	-255.8	-228.9	343.0	0.00	0.00	0.00
3,050.0	12.21	225.58	3,014.4	-263.2	-236.5	353.6	0.00	0.00	0.00
3,100.0	12.21	225.58	3,063.3	-270.6	-244.0	364.2	0.00	0.00	0.00
3,150.0	12.21	225.58	3,112.2	-278.0	-251.6	374.8	0.00	0.00	0.00
3,200.0	12.21	225.58	3,161.0	-285.4	-259.1	385.3	0.00	0.00	0.00
3,250.0	12.21	225.58	3,209.9	-292.8	-266.7	395.9	0.00	0.00	0.00
3,300.0	12.21	225.58	3,258.8	-300.2	-274.2	406.5	0.00	0.00	0.00
3,350.0	12.21	225.58	3,307.6	-307.6	-281.8	417.0	0.00	0.00	0.00
3,400.0	12.21	225.58	3,356.5	-315.0	-289.3	427.6	0.00	0.00	0.00
3,450.0	12.21	225.58	3,405.4	-322.4	-296.9	438.2	0.00	0.00	0.00
3,500.0	12.21	225.58	3,454.2	-329.8	-304.5	448.7	0.00	0.00	0.00
3,550.0	12.21	225.58	3,503.1	-337.2	-312.0	459.3	0.00	0.00	0.00
3,600.0	12.21	225.58	3,552.0	-344.6	-319.6	469.9	0.00	0.00	0.00
3,650.0	12.21	225.58	3,600.9	-352.0	-327.1	480.5	0.00	0.00	0.00
3,700.0	12.21	225.58	3,649.7	-359.4	-334.7	491.0	0.00	0.00	0.00
3,750.0	12.21	225.58	3,698.6	-366.8	-342.2	501.6	0.00	0.00	0.00
3,800.0	12.21	225.58	3,747.5	-374.2	-349.8	512.2	0.00	0.00	0.00
3,850.0	12.21	225.58	3,796.3	-381.6	-357.3	522.7	0.00	0.00	0.00
3,900.0	12.21	225.58	3,845.2	-389.0	-364.9	533.3	0.00	0.00	0.00
3,950.0	12.21	225.58	3,894.1	-396.4	-372.4	543.9	0.00	0.00	0.00
4,000.0	12.21	225.58	3,942.9	-403.8	-380.0	554.5	0.00	0.00	0.00
4,050.0	12.21	225.58	3,991.8	-411.2	-387.5	565.0	0.00	0.00	0.00
4,100.0	12.21	225.58	4,040.7	-418.6	-395.1	575.6	0.00	0.00	0.00
4,150.0	12.21	225.58	4,089.5	-426.0	-402.6	586.2	0.00	0.00	0.00
4,200.0	12.21	225.58	4,138.4	-433.4	-410.2	596.7	0.00	0.00	0.00
4,250.0	12.21	225.58	4,187.3	-440.8	-417.7	607.3	0.00	0.00	0.00
4,300.0	12.21	225.58	4,236.1	-448.2	-425.3	617.9	0.00	0.00	0.00
4,350.0	12.21	225.58	4,285.0	-455.6	-432.9	628.5	0.00	0.00	0.00
4,400.0	12.21	225.58	4,333.9	-463.1	-440.4	639.0	0.00	0.00	0.00
4,450.0	12.21	225.58	4,382.8	-470.5	-448.0	649.6	0.00	0.00	0.00
4,500.0	12.21	225.58	4,431.6	-477.9	-455.5	660.2	0.00	0.00	0.00
4,550.0	12.21	225.58	4,480.5	-485.3	-463.1	670.7	0.00	0.00	0.00
4,600.0	12.21	225.58	4,529.4	-492.7	-470.6	681.3	0.00	0.00	0.00
4,650.0	12.21	225.58	4,578.2	-500.1	-478.2	691.9	0.00	0.00	0.00
4,700.0	12.21	225.58	4,627.1	-507.5	-485.7	702.5	0.00	0.00	0.00
4,750.0	12.21	225.58	4,676.0	-514.9	-493.3	713.0	0.00	0.00	0.00
4,800.0	12.21	225.58	4,724.8	-522.3	-500.8	723.6	0.00	0.00	0.00
4,850.0	12.21	225.58	4,773.7	-529.7	-508.4	734.2	0.00	0.00	0.00
4,872.9	12.21	225.58	4,796.0	-533.1	-511.8	739.0	0.00	0.00	0.00
4,900.0	11.40	225.58	4,822.6	-536.9	-515.8	744.6	3.00	-3.00	0.00
4,950.0	9.90	225.58	4,871.8	-543.4	-522.4	753.8	3.00	-3.00	0.00
5,000.0	8.40	225.58	4,921.1	-549.0	-528.1	761.7	3.00	-3.00	0.00
5,050.0	6.90	225.58	4,970.7	-553.6	-532.8	768.4	3.00	-3.00	0.00
5,100.0	5.40	225.58	5,020.4	-557.4	-536.7	773.7	3.00	-3.00	0.00
5,150.0	3.90	225.58	5,070.2	-560.2	-539.5	777.8	3.00	-3.00	0.00
5,200.0	2.40	225.58	5,120.1	-562.1	-541.5	780.5	3.00	-3.00	0.00

Database:	Landmark	Local Co-ordinate Reference:	Well Pratt 14-29D
Company:	Synergy Resources	TVD Reference:	WELL @ 5154.0ft (Original Well Elev)
Project:	SEC.29-T1N-R68W	MD Reference:	WELL @ 5154.0ft (Original Well Elev)
Site:	Pratt 24-29D Pad Sec.29-T1N-R68W	North Reference:	True
Well:	Pratt 14-29D	Survey Calculation Method:	Minimum Curvature
Wellbore:	Wellbore #1		
Design:	Plan #2 (12-30-10)		

Planned Survey									
Measured Depth (ft)	Inclination (°)	Azimuth (°)	Vertical Depth (ft)	+N/-S (ft)	+E/-W (ft)	Vertical Section (ft)	Dogleg Rate (°/100ft)	Build Rate (°/100ft)	Turn Rate (°/100ft)
5,250.0	0.90	225.58	5,170.1	-563.1	-542.5	782.0	3.00	-3.00	0.00
5,279.9	0.00	0.00	5,200.0	-563.3	-542.7	782.2	3.00	-3.00	0.00
5,300.0	0.00	0.00	5,220.1	-563.3	-542.7	782.2	0.00	0.00	0.00
5,350.0	0.00	0.00	5,270.1	-563.3	-542.7	782.2	0.00	0.00	0.00
5,400.0	0.00	0.00	5,320.1	-563.3	-542.7	782.2	0.00	0.00	0.00
5,450.0	0.00	0.00	5,370.1	-563.3	-542.7	782.2	0.00	0.00	0.00
5,500.0	0.00	0.00	5,420.1	-563.3	-542.7	782.2	0.00	0.00	0.00
5,550.0	0.00	0.00	5,470.1	-563.3	-542.7	782.2	0.00	0.00	0.00
5,600.0	0.00	0.00	5,520.1	-563.3	-542.7	782.2	0.00	0.00	0.00
5,650.0	0.00	0.00	5,570.1	-563.3	-542.7	782.2	0.00	0.00	0.00
5,700.0	0.00	0.00	5,620.1	-563.3	-542.7	782.2	0.00	0.00	0.00
5,750.0	0.00	0.00	5,670.1	-563.3	-542.7	782.2	0.00	0.00	0.00
5,800.0	0.00	0.00	5,720.1	-563.3	-542.7	782.2	0.00	0.00	0.00
5,850.0	0.00	0.00	5,770.1	-563.3	-542.7	782.2	0.00	0.00	0.00
5,900.0	0.00	0.00	5,820.1	-563.3	-542.7	782.2	0.00	0.00	0.00
5,950.0	0.00	0.00	5,870.1	-563.3	-542.7	782.2	0.00	0.00	0.00
6,000.0	0.00	0.00	5,920.1	-563.3	-542.7	782.2	0.00	0.00	0.00
6,050.0	0.00	0.00	5,970.1	-563.3	-542.7	782.2	0.00	0.00	0.00
6,100.0	0.00	0.00	6,020.1	-563.3	-542.7	782.2	0.00	0.00	0.00
6,150.0	0.00	0.00	6,070.1	-563.3	-542.7	782.2	0.00	0.00	0.00
6,200.0	0.00	0.00	6,120.1	-563.3	-542.7	782.2	0.00	0.00	0.00
6,250.0	0.00	0.00	6,170.1	-563.3	-542.7	782.2	0.00	0.00	0.00
6,300.0	0.00	0.00	6,220.1	-563.3	-542.7	782.2	0.00	0.00	0.00
6,350.0	0.00	0.00	6,270.1	-563.3	-542.7	782.2	0.00	0.00	0.00
6,400.0	0.00	0.00	6,320.1	-563.3	-542.7	782.2	0.00	0.00	0.00
6,450.0	0.00	0.00	6,370.1	-563.3	-542.7	782.2	0.00	0.00	0.00
6,500.0	0.00	0.00	6,420.1	-563.3	-542.7	782.2	0.00	0.00	0.00
6,550.0	0.00	0.00	6,470.1	-563.3	-542.7	782.2	0.00	0.00	0.00
6,600.0	0.00	0.00	6,520.1	-563.3	-542.7	782.2	0.00	0.00	0.00
6,650.0	0.00	0.00	6,570.1	-563.3	-542.7	782.2	0.00	0.00	0.00
6,700.0	0.00	0.00	6,620.1	-563.3	-542.7	782.2	0.00	0.00	0.00
6,750.0	0.00	0.00	6,670.1	-563.3	-542.7	782.2	0.00	0.00	0.00
6,800.0	0.00	0.00	6,720.1	-563.3	-542.7	782.2	0.00	0.00	0.00
6,850.0	0.00	0.00	6,770.1	-563.3	-542.7	782.2	0.00	0.00	0.00
6,900.0	0.00	0.00	6,820.1	-563.3	-542.7	782.2	0.00	0.00	0.00
6,950.0	0.00	0.00	6,870.1	-563.3	-542.7	782.2	0.00	0.00	0.00
7,000.0	0.00	0.00	6,920.1	-563.3	-542.7	782.2	0.00	0.00	0.00
7,050.0	0.00	0.00	6,970.1	-563.3	-542.7	782.2	0.00	0.00	0.00
7,100.0	0.00	0.00	7,020.1	-563.3	-542.7	782.2	0.00	0.00	0.00
7,150.0	0.00	0.00	7,070.1	-563.3	-542.7	782.2	0.00	0.00	0.00
7,200.0	0.00	0.00	7,120.1	-563.3	-542.7	782.2	0.00	0.00	0.00
7,250.0	0.00	0.00	7,170.1	-563.3	-542.7	782.2	0.00	0.00	0.00
7,300.0	0.00	0.00	7,220.1	-563.3	-542.7	782.2	0.00	0.00	0.00
7,350.0	0.00	0.00	7,270.1	-563.3	-542.7	782.2	0.00	0.00	0.00
7,400.0	0.00	0.00	7,320.1	-563.3	-542.7	782.2	0.00	0.00	0.00
7,450.0	0.00	0.00	7,370.1	-563.3	-542.7	782.2	0.00	0.00	0.00
7,500.0	0.00	0.00	7,420.1	-563.3	-542.7	782.2	0.00	0.00	0.00
7,550.0	0.00	0.00	7,470.1	-563.3	-542.7	782.2	0.00	0.00	0.00
7,600.0	0.00	0.00	7,520.1	-563.3	-542.7	782.2	0.00	0.00	0.00
7,650.0	0.00	0.00	7,570.1	-563.3	-542.7	782.2	0.00	0.00	0.00
7,700.0	0.00	0.00	7,620.1	-563.3	-542.7	782.2	0.00	0.00	0.00
7,729.9	0.00	0.00	7,650.0	-563.3	-542.7	782.2	0.00	0.00	0.00

Database:	Landmark	Local Co-ordinate Reference:	Well Pratt 14-29D
Company:	Synergy Resources	TVD Reference:	WELL @ 5154.0ft (Original Well Elev)
Project:	SEC.29-T1N-R68W	MD Reference:	WELL @ 5154.0ft (Original Well Elev)
Site:	Pratt 24-29D Pad Sec.29-T1N-R68W	North Reference:	True
Well:	Pratt 14-29D	Survey Calculation Method:	Minimum Curvature
Wellbore:	Wellbore #1		
Design:	Plan #2 (12-30-10)		

Targets									
Target Name									
- hit/miss target	Dip Angle	Dip Dir.	TVD	+N/-S	+E/-W	Northing	Easting	Latitude	Longitude
- Shape	(°)	(°)	(ft)	(ft)	(ft)	(ft)	(ft)		
DRILL TARGET 535'F	0.00	0.00	5,200.0	-563.3	-542.7	1,249,101.50	3,130,250.03	40° 0' 58.438 N	105° 2' 5.869 W
- plan hits target center									
- Point									
LEGAL BOX 400' X 400'	0.00	0.00	6,200.0	-438.3	-417.7	1,249,227.16	3,130,374.36	40° 0' 59.673 N	105° 2' 4.262 W
- plan misses target center by 176.8ft at 6279.9ft MD (6200.0 TVD, -563.3 N, -542.7 E)									
- Rectangle (sides W400.0 H400.0 D1,450.0)									
PERMIT TARGET BH	0.00	0.00	5,200.0	-627.3	-611.7	1,249,037.16	3,130,181.33	40° 0' 57.805 N	105° 2' 6.756 W
- plan misses target center by 94.1ft at 5279.9ft MD (5200.0 TVD, -563.3 N, -542.7 E)									
- Point									

Casing Points					
	Measured Depth	Vertical Depth		Casing Diameter	Hole Diameter
	(ft)	(ft)	Name	(")	(")
	900.0	900.0	8 5/8"	8-5/8	12-1/4



Directional

Synergy Resources

SEC.29-T1N-R68W

Pratt 24-29D Pad Sec.29-T1N-R68W

Pratt 14-29D

Wellbore #1

Plan #2 (12-30-10)

Anticollision Report

30 December, 2010

Company:	Synergy Resources	Local Co-ordinate Reference:	Well Pratt 14-29D
Project:	SEC.29-T1N-R68W	TVD Reference:	WELL @ 5154.0ft (Original Well Elev)
Reference Site:	Pratt 24-29D Pad Sec.29-T1N-R68W	MD Reference:	WELL @ 5154.0ft (Original Well Elev)
Site Error:	0.0ft	North Reference:	True
Reference Well:	Pratt 14-29D	Survey Calculation Method:	Minimum Curvature
Well Error:	0.0ft	Output errors are at	2.00 sigma
Reference Wellbore	Wellbore #1	Database:	Landmark
Reference Design:	Plan #2 (12-30-10)	Offset TVD Reference:	Offset Datum

Offset Design Pratt 24-29D Pad Sec.29-T1N-R68W - Pratt 13-29D - Wellbore #1 - Plan #1 (12-28-10)												Offset Site Error:	0.0ft
Survey Program: 0-MWD												Offset Well Error:	0.0ft
Reference		Offset		Semi Major Axis			Distance						
Measured Depth (ft)	Vertical Depth (ft)	Measured Depth (ft)	Vertical Depth (ft)	Reference (ft)	Offset (ft)	Highside Toolface (°)	Offset Wellbore Centre +N/-S (ft)	+E/-W (ft)	Between Centres (ft)	Between Ellipses (ft)	Minimum Separation (ft)	Separation Factor	Warning
700.0	700.0	701.0	701.0	1.4	1.4	90.00	0.0	19.9	19.9	17.0	2.89	6.869	
750.0	750.0	751.0	751.0	1.6	1.6	90.00	0.0	19.9	19.9	16.8	3.12	6.374	
800.0	800.0	801.0	801.0	1.7	1.7	90.00	0.0	19.9	19.9	16.5	3.34	5.946	
850.0	850.0	851.0	851.0	1.8	1.8	90.00	0.0	19.9	19.9	16.3	3.57	5.572	
900.0	900.0	901.0	901.0	1.9	1.9	90.00	0.0	19.9	19.9	16.1	3.79	5.241	
950.0	950.0	951.0	951.0	2.0	2.0	90.00	0.0	19.9	19.9	15.9	4.02	4.948	
1,000.0	1,000.0	1,001.0	1,001.0	2.1	2.1	90.00	0.0	19.9	19.9	15.6	4.24	4.686 CC	
1,011.1	1,011.1	1,012.1	1,012.1	2.1	2.1	-90.06	0.0	19.9	19.9	15.6	4.29	4.635	
1,050.0	1,050.0	1,051.0	1,051.0	2.2	2.2	-91.26	0.0	19.9	19.9	15.4	4.45	4.466	
1,100.0	1,100.0	1,101.0	1,101.0	2.3	2.3	-95.01	0.0	19.9	20.0	15.3	4.66	4.280 ES	
1,150.0	1,149.9	1,150.9	1,150.9	2.4	2.5	-101.15	0.0	19.9	20.3	15.4	4.86	4.168	
1,200.0	1,199.8	1,200.8	1,200.8	2.5	2.6	-109.29	0.0	19.9	21.1	16.0	5.06	4.162 SF	
1,250.0	1,249.7	1,250.7	1,250.7	2.6	2.7	-119.76	0.4	19.7	22.7	17.4	5.27	4.310	
1,300.0	1,299.5	1,300.3	1,300.3	2.7	2.8	-140.69	1.6	19.1	25.8	20.4	5.47	4.725	
1,350.0	1,349.2	1,349.7	1,349.6	2.8	2.9	-157.99	3.5	18.1	30.9	25.2	5.68	5.435	
1,400.0	1,398.9	1,398.8	1,398.6	2.9	3.0	-171.47	6.1	16.7	37.6	31.7	5.88	6.389	
1,450.0	1,448.5	1,447.6	1,447.3	3.0	3.1	178.25	9.5	15.0	45.8	39.7	6.09	7.521	
1,500.0	1,498.1	1,496.0	1,495.5	3.2	3.2	170.39	13.6	12.8	55.5	49.1	6.30	8.798	
1,550.0	1,547.5	1,544.1	1,543.3	3.3	3.4	164.31	18.3	10.4	66.3	59.8	6.52	10.176	
1,600.0	1,596.8	1,591.8	1,590.6	3.4	3.5	159.54	23.7	7.6	78.4	71.7	6.73	11.647	
1,650.0	1,645.9	1,639.0	1,637.3	3.6	3.6	155.72	29.8	4.4	91.7	84.7	6.96	13.173	
1,700.0	1,695.0	1,685.8	1,683.4	3.7	3.7	152.61	36.5	1.0	106.1	98.9	7.18	14.763	
1,750.0	1,743.8	1,732.0	1,729.0	3.9	3.9	151.14	43.7	-2.8	121.4	114.0	7.42	16.356	
1,800.0	1,792.7	1,777.9	1,774.0	4.1	4.0	150.44	51.6	-6.9	137.4	129.7	7.67	17.916	
1,850.0	1,841.6	1,823.4	1,818.5	4.3	4.1	149.69	60.0	-11.2	153.9	146.0	7.92	19.424	
1,900.0	1,890.4	1,868.5	1,862.4	4.5	4.3	148.91	68.9	-15.9	171.0	162.8	8.18	20.906	
1,950.0	1,939.3	1,913.1	1,905.8	4.6	4.4	148.12	78.4	-20.8	188.6	180.2	8.44	22.343	

Company:	Synergy Resources	Local Co-ordinate Reference:	Well Pratt 14-29D
Project:	SEC.29-T1N-R68W	TVD Reference:	WELL @ 5154.0ft (Original Well Elev)
Reference Site:	Pratt 24-29D Pad Sec.29-T1N-R68W	MD Reference:	WELL @ 5154.0ft (Original Well Elev)
Site Error:	0.0ft	North Reference:	True
Reference Well:	Pratt 14-29D	Survey Calculation Method:	Minimum Curvature
Well Error:	0.0ft	Output errors are at	2.00 sigma
Reference Wellbore	Wellbore #1	Database:	Landmark
Reference Design:	Plan #2 (12-30-10)	Offset TVD Reference:	Offset Datum

Offset Design Pratt 24-29D Pad Sec.29-T1N-R68W - Pratt 24-29D - Wellbore #1 - Plan #2 (12-30-10)												Offset Site Error:	0.0ft
Survey Program: 0-MWD												Offset Well Error:	0.0ft
Reference	Offset	Semi Major Axis		Distance		Warning							
Measured Depth (ft)	Vertical Depth (ft)	Measured Depth (ft)	Vertical Depth (ft)	Reference (ft)	Offset (ft)	Highside Toolface (°)	Offset Wellbore Centre +N/-S (ft)	+E/-W (ft)	Between Centres (ft)	Between Ellipses (ft)	Minimum Separation (ft)	Separation Factor	
0.0	0.0	1.0	1.0	0.0	0.0	90.00	0.0	100.0	100.0				
50.0	50.0	51.0	51.0	0.0	0.0	90.00	0.0	100.0	100.0	99.9	0.09	1,093.457	
100.0	100.0	101.0	101.0	0.1	0.1	90.00	0.0	100.0	100.0	99.8	0.20	505.538	
150.0	150.0	151.0	151.0	0.2	0.2	90.00	0.0	100.0	100.0	99.6	0.42	236.635	
200.0	200.0	201.0	201.0	0.3	0.3	90.00	0.0	100.0	100.0	99.3	0.65	154.470	
250.0	250.0	251.0	251.0	0.4	0.4	90.00	0.0	100.0	100.0	99.1	0.87	114.658	
300.0	300.0	301.0	301.0	0.5	0.5	90.00	0.0	100.0	100.0	98.9	1.10	91.163	
350.0	350.0	351.0	351.0	0.7	0.7	90.00	0.0	100.0	100.0	98.7	1.32	75.659	
400.0	400.0	401.0	401.0	0.8	0.8	90.00	0.0	100.0	100.0	98.4	1.55	64.662	
450.0	450.0	451.0	451.0	0.9	0.9	90.00	0.0	100.0	100.0	98.2	1.77	56.456	
500.0	500.0	501.0	501.0	1.0	1.0	90.00	0.0	100.0	100.0	98.0	2.00	50.098	
550.0	550.0	551.0	551.0	1.1	1.1	90.00	0.0	100.0	100.0	97.8	2.22	45.028	
600.0	600.0	601.0	601.0	1.2	1.2	90.00	0.0	100.0	100.0	97.5	2.45	40.889	
650.0	650.0	651.0	651.0	1.3	1.3	90.00	0.0	100.0	100.0	97.3	2.67	37.447	
700.0	700.0	701.0	701.0	1.4	1.4	90.00	0.0	100.0	100.0	97.1	2.89	34.540	
750.0	750.0	751.0	751.0	1.6	1.6	90.00	0.0	100.0	100.0	96.9	3.12	32.051	
800.0	800.0	801.0	801.0	1.7	1.7	90.00	0.0	100.0	100.0	96.6	3.34	29.897	
850.0	850.0	851.0	851.0	1.8	1.8	90.00	0.0	100.0	100.0	96.4	3.57	28.015	
900.0	900.0	901.0	901.0	1.9	1.9	90.00	0.0	100.0	100.0	96.2	3.79	26.355	
950.0	950.0	951.0	951.0	2.0	2.0	90.00	0.0	100.0	100.0	96.0	4.02	24.881	
983.0	983.0	984.0	984.0	2.1	2.1	90.00	0.0	100.0	100.0	95.8	4.17	23.996 CC	
1,000.0	1,000.0	1,000.0	1,000.0	2.1	2.1	90.00	0.0	100.0	100.0	95.8	4.24	23.577 ES	
1,050.0	1,050.0	1,049.5	1,049.5	2.2	2.2	-90.11	-0.2	100.4	100.4	95.9	4.44	22.607	
1,100.0	1,100.0	1,098.0	1,098.0	2.3	2.3	-90.46	-0.8	101.5	101.5	96.9	4.64	21.891	
1,150.0	1,149.9	1,146.4	1,146.4	2.4	2.4	-91.03	-1.8	103.3	103.4	98.6	4.82	21.461	
1,200.0	1,199.8	1,194.8	1,194.7	2.5	2.5	-91.80	-3.2	105.8	106.0	101.0	5.00	21.216	
1,250.0	1,249.7	1,243.1	1,242.8	2.6	2.6	-92.72	-5.0	109.0	109.4	104.3	5.19	21.097 SF	
1,300.0	1,299.5	1,291.3	1,290.8	2.7	2.7	-103.40	-7.2	112.9	114.0	108.6	5.39	21.170	
1,350.0	1,349.2	1,339.2	1,338.4	2.8	2.8	-112.20	-9.8	117.5	120.2	114.6	5.60	21.464	
1,400.0	1,398.9	1,386.9	1,385.7	2.9	2.9	-119.29	-12.7	122.8	127.9	122.0	5.81	22.003	
1,450.0	1,448.5	1,434.3	1,432.6	3.0	3.1	-124.95	-16.0	128.7	137.0	131.0	6.03	22.708	
1,500.0	1,498.1	1,481.2	1,478.9	3.2	3.2	-129.46	-19.6	135.2	147.7	141.4	6.26	23.605	
1,550.0	1,547.5	1,527.7	1,524.7	3.3	3.3	-133.08	-23.6	142.3	159.8	153.3	6.49	24.620	
1,600.0	1,596.8	1,573.6	1,569.8	3.4	3.5	-135.98	-27.8	150.0	173.4	166.7	6.73	25.782	
1,650.0	1,645.9	1,619.0	1,614.2	3.6	3.6	-138.34	-32.4	158.2	188.4	181.4	6.97	27.028	

Offset Design Pratt 24-29D Pad Sec.29-T1N-R68W - Pratt 29HD - Wellbore #1 - Plan #2 (12-30-10)													Offset Site Error: 0.0 ft	
Survey Program: 0-MWD													Offset Well Error: 0.0 ft	
Reference		Offset		Semi Major Axis			Distance							
Measured Depth (ft)	Vertical Depth (ft)	Measured Depth (ft)	Vertical Depth (ft)	Reference (ft)	Offset (ft)	Highside Toolface (°)	Offset Wellbore Centre +N/-S (ft)	+E/-W (ft)	Between Centres (ft)	Between Ellipses (ft)	Minimum Separation (ft)	Separation Factor	Warning	
0.0	0.0	0.0	0.0	0.0	0.0	-90.00	0.0	-20.2	20.2					
50.0	50.0	50.0	50.0	0.0	0.0	-90.00	0.0	-20.2	20.2	20.1	0.09	222.913		
100.0	100.0	100.0	100.0	0.1	0.1	-90.00	0.0	-20.2	20.2	20.0	0.20	103.129		
150.0	150.0	150.0	150.0	0.2	0.2	-90.00	0.0	-20.2	20.2	19.7	0.42	47.980		
200.0	200.0	200.0	200.0	0.3	0.3	-90.00	0.0	-20.2	20.2	19.5	0.65	31.262		
250.0	250.0	250.0	250.0	0.4	0.4	-90.00	0.0	-20.2	20.2	19.3	0.87	23.184		
300.0	300.0	300.0	300.0	0.5	0.5	-90.00	0.0	-20.2	20.2	19.1	1.09	18.423		
350.0	350.0	350.0	350.0	0.7	0.7	-90.00	0.0	-20.2	20.2	18.8	1.32	15.285		
400.0	400.0	400.0	400.0	0.8	0.8	-90.00	0.0	-20.2	20.2	18.6	1.54	13.060		
450.0	450.0	450.0	450.0	0.9	0.9	-90.00	0.0	-20.2	20.2	18.4	1.77	11.401		
500.0	500.0	500.0	500.0	1.0	1.0	-90.00	0.0	-20.2	20.2	18.2	1.99	10.115		
550.0	550.0	550.0	550.0	1.1	1.1	-90.00	0.0	-20.2	20.2	17.9	2.22	9.090		
600.0	600.0	600.0	600.0	1.2	1.2	-90.00	0.0	-20.2	20.2	17.7	2.44	8.254		
650.0	650.0	650.0	650.0	1.3	1.3	-90.00	0.0	-20.2	20.2	17.5	2.67	7.559		
700.0	700.0	700.0	700.0	1.4	1.4	-90.00	0.0	-20.2	20.2	17.3	2.89	6.971		
750.0	750.0	750.0	750.0	1.6	1.6	-90.00	0.0	-20.2	20.2	17.0	3.12	6.469		
800.0	800.0	800.0	800.0	1.7	1.7	-90.00	0.0	-20.2	20.2	16.8	3.34	6.034		
850.0	850.0	850.0	850.0	1.8	1.8	-90.00	0.0	-20.2	20.2	16.6	3.57	5.654		
900.0	900.0	900.0	900.0	1.9	1.9	-90.00	0.0	-20.2	20.2	16.4	3.79	5.318		
950.0	950.0	950.0	950.0	2.0	2.0	-90.00	0.0	-20.2	20.2	16.1	4.02	5.021		
1,000.0	1,000.0	1,000.0	1,000.0	2.1	2.1	-90.00	0.0	-20.2	20.2	15.9	4.24	4.755	CC, ES	
1,050.0	1,050.0	1,049.6	1,049.6	2.2	2.2	91.46	0.1	-20.6	20.6	16.2	4.45	4.633	SF	
1,100.0	1,100.0	1,099.2	1,099.2	2.3	2.3	95.48	0.4	-21.8	22.0	17.3	4.65	4.723		
1,150.0	1,149.9	1,148.7	1,148.7	2.4	2.4	101.11	0.8	-23.9	24.4	19.6	4.84	5.048		
1,200.0	1,199.8	1,198.1	1,197.9	2.5	2.5	107.22	1.5	-26.8	28.2	23.2	5.03	5.606		
1,250.0	1,249.7	1,247.2	1,246.9	2.6	2.7	112.94	2.3	-30.6	33.4	28.2	5.23	6.388		
1,300.0	1,299.5	1,296.1	1,295.5	2.7	2.8	108.07	3.3	-35.1	39.6	34.2	5.44	7.286		
1,350.0	1,349.2	1,344.8	1,344.0	2.8	2.9	104.05	4.5	-40.4	46.3	40.7	5.66	8.189		
1,400.0	1,398.9	1,393.4	1,392.2	2.9	3.0	100.94	5.9	-46.5	53.5	47.7	5.88	9.105		
1,450.0	1,448.5	1,441.9	1,440.1	3.0	3.1	98.59	7.4	-53.3	61.2	55.1	6.11	10.009		
1,500.0	1,498.1	1,490.1	1,487.7	3.2	3.3	96.86	9.2	-61.0	69.3	63.0	6.35	10.916		
1,550.0	1,547.5	1,538.2	1,535.1	3.3	3.4	95.60	11.0	-69.4	78.0	71.3	6.61	11.792		
1,600.0	1,596.8	1,586.1	1,582.0	3.4	3.6	94.67	13.1	-78.5	87.0	80.2	6.87	12.661		
1,650.0	1,645.9	1,633.9	1,628.7	3.6	3.7	94.01	15.3	-88.3	96.6	89.4	7.16	13.483		
1,700.0	1,695.0	1,681.4	1,675.0	3.7	3.9	93.53	17.7	-98.9	106.5	99.1	7.46	14.289		
1,750.0	1,743.8	1,729.8	1,722.0	3.9	4.1	94.34	20.2	-110.2	116.9	109.1	7.78	15.024		
1,800.0	1,792.7	1,778.6	1,769.4	4.1	4.3	95.74	22.8	-121.6	127.3	119.2	8.11	15.700		
1,850.0	1,841.6	1,827.4	1,816.8	4.3	4.5	96.93	25.3	-133.1	137.7	129.3	8.44	16.310		
1,900.0	1,890.4	1,876.3	1,864.2	4.5	4.7	97.95	27.9	-144.5	148.2	139.5	8.79	16.866		
1,950.0	1,939.3	1,925.1	1,911.6	4.6	4.9	98.83	30.5	-155.9	158.8	149.6	9.15	17.363		
2,000.0	1,988.2	1,973.9	1,958.9	4.8	5.1	99.61	33.0	-167.4	169.4	159.9	9.51	17.815		
2,050.0	2,037.1	2,022.7	2,006.3	5.0	5.4	100.29	35.6	-178.8	180.0	170.1	9.88	18.222		
2,100.0	2,085.9	2,071.5	2,053.7	5.2	5.6	100.90	38.2	-190.3	190.6	180.4	10.25	18.595		

Company:	Synergy Resources	Local Co-ordinate Reference:	Well Pratt 14-29D
Project:	SEC.29-T1N-R68W	TVD Reference:	WELL @ 5154.0ft (Original Well Elev)
Reference Site:	Pratt 24-29D Pad Sec.29-T1N-R68W	MD Reference:	WELL @ 5154.0ft (Original Well Elev)
Site Error:	0.0ft	North Reference:	True
Reference Well:	Pratt 14-29D	Survey Calculation Method:	Minimum Curvature
Well Error:	0.0ft	Output errors are at	2.00 sigma
Reference Wellbore	Wellbore #1	Database:	Landmark
Reference Design:	Plan #2 (12-30-10)	Offset TVD Reference:	Offset Datum

Offset Design Pratt 24-29D Pad Sec.29-T1N-R68W - Pratt 29LD - Wellbore #1 - Plan #1 (12-28-10)													Offset Site Error:	0.0ft
Survey Program: 0-MWD													Offset Well Error:	0.0ft
Reference	Offset	Semi Major Axis		Distance										Warning
Measured Depth (ft)	Vertical Depth (ft)	Measured Depth (ft)	Vertical Depth (ft)	Reference (ft)	Offset (ft)	Highside Toolface (°)	Offset Wellbore Centre +N/-S (ft)	+E/-W (ft)	Between Centres (ft)	Between Ellipses (ft)	Minimum Separation (ft)	Separation Factor		
0.0	0.0	0.0	0.0	0.0	0.0	90.01	0.0	40.1	40.1					
50.0	50.0	50.0	50.0	0.0	0.0	90.01	0.0	40.1	40.1	40.0	0.09	442.729		
100.0	100.0	100.0	100.0	0.1	0.1	90.01	0.0	40.1	40.1	39.9	0.20	204.826		
150.0	150.0	150.0	150.0	0.2	0.2	90.01	0.0	40.1	40.1	39.6	0.42	95.293		
200.0	200.0	200.0	200.0	0.3	0.3	90.01	0.0	40.1	40.1	39.4	0.65	62.090		
250.0	250.0	250.0	250.0	0.4	0.4	90.01	0.0	40.1	40.1	39.2	0.87	46.046		
300.0	300.0	300.0	300.0	0.5	0.5	90.01	0.0	40.1	40.1	39.0	1.09	36.591		
350.0	350.0	350.0	350.0	0.7	0.7	90.01	0.0	40.1	40.1	38.7	1.32	30.358		
400.0	400.0	400.0	400.0	0.8	0.8	90.01	0.0	40.1	40.1	38.5	1.54	25.939		
450.0	450.0	450.0	450.0	0.9	0.9	90.01	0.0	40.1	40.1	38.3	1.77	22.643		
500.0	500.0	500.0	500.0	1.0	1.0	90.01	0.0	40.1	40.1	38.1	1.99	20.090		
550.0	550.0	550.0	550.0	1.1	1.1	90.01	0.0	40.1	40.1	37.8	2.22	18.055		
600.0	600.0	600.0	600.0	1.2	1.2	90.01	0.0	40.1	40.1	37.6	2.44	16.394		
650.0	650.0	650.0	650.0	1.3	1.3	90.01	0.0	40.1	40.1	37.4	2.67	15.013		
700.0	700.0	700.0	700.0	1.4	1.4	90.01	0.0	40.1	40.1	37.2	2.89	13.846		
750.0	750.0	750.0	750.0	1.6	1.6	90.01	0.0	40.1	40.1	36.9	3.12	12.848		
800.0	800.0	800.0	800.0	1.7	1.7	90.01	0.0	40.1	40.1	36.7	3.34	11.984		
850.0	850.0	850.0	850.0	1.8	1.8	90.01	0.0	40.1	40.1	36.5	3.57	11.229		
900.0	900.0	900.0	900.0	1.9	1.9	90.01	0.0	40.1	40.1	36.3	3.79	10.563		
950.0	950.0	950.0	950.0	2.0	2.0	90.01	0.0	40.1	40.1	36.0	4.02	9.972		
1,000.0	1,000.0	1,000.0	1,000.0	2.1	2.1	90.01	0.0	40.1	40.1	35.8	4.24	9.443 CC		
1,050.0	1,050.0	1,049.9	1,049.9	2.2	2.2	-90.01	-0.4	40.1	40.1	35.7	4.44	9.047 ES		
1,100.0	1,100.0	1,099.7	1,099.7	2.3	2.3	-90.04	-1.7	40.4	40.4	35.8	4.63	8.720		
1,150.0	1,149.9	1,149.6	1,149.5	2.4	2.4	-90.10	-3.8	40.8	40.8	36.0	4.81	8.489		
1,200.0	1,199.8	1,199.4	1,199.3	2.5	2.5	-90.18	-6.8	41.4	41.4	36.4	4.98	8.309		
1,250.0	1,249.7	1,249.3	1,249.0	2.6	2.6	-90.27	-10.6	42.2	42.2	37.0	5.17	8.153		
1,300.0	1,299.5	1,299.1	1,298.6	2.7	2.7	-99.76	-15.3	43.1	43.5	38.1	5.37	8.102 SF		
1,350.0	1,349.2	1,348.9	1,348.1	2.8	2.8	-106.90	-20.8	44.2	45.8	40.2	5.59	8.200		
1,400.0	1,398.9	1,398.6	1,397.3	2.9	2.9	-112.02	-27.2	45.4	49.1	43.3	5.80	8.465		
1,450.0	1,448.5	1,448.2	1,446.4	3.0	3.0	-115.54	-34.3	46.8	53.4	47.4	6.04	8.844		
1,500.0	1,498.1	1,497.6	1,495.1	3.2	3.1	-117.91	-42.3	48.4	58.8	52.5	6.28	9.362		
1,550.0	1,547.5	1,546.8	1,543.5	3.3	3.3	-119.47	-51.0	50.1	65.3	58.7	6.55	9.963		
1,600.0	1,596.8	1,595.8	1,591.5	3.4	3.4	-120.49	-60.6	52.0	72.8	66.0	6.82	10.676		
1,650.0	1,645.9	1,644.5	1,639.1	3.6	3.6	-121.14	-70.8	54.1	81.4	74.3	7.12	11.437		
1,700.0	1,695.0	1,693.0	1,686.2	3.7	3.8	-121.55	-81.8	56.2	91.2	83.7	7.42	12.284		
1,750.0	1,743.8	1,741.4	1,733.2	3.9	4.0	-120.88	-93.5	58.6	101.8	94.0	7.75	13.133		
1,800.0	1,792.7	1,790.2	1,780.5	4.1	4.2	-119.74	-105.4	60.9	112.6	104.5	8.09	13.915		
1,850.0	1,841.6	1,839.0	1,827.7	4.3	4.4	-118.80	-117.3	63.3	123.4	115.0	8.44	14.618		
1,900.0	1,890.4	1,887.8	1,875.0	4.5	4.6	-118.01	-129.2	65.6	134.3	125.5	8.80	15.262		
1,950.0	1,939.3	1,936.5	1,922.2	4.6	4.8	-117.34	-141.0	68.0	145.1	136.0	9.17	15.835		
2,000.0	1,988.2	1,985.3	1,969.5	4.8	5.0	-116.76	-152.9	70.3	156.0	146.5	9.53	16.365		
2,050.0	2,037.1	2,034.1	2,016.7	5.0	5.2	-116.26	-164.8	72.7	166.9	157.0	9.91	16.841		
2,100.0	2,085.9	2,082.9	2,064.0	5.2	5.4	-115.81	-176.7	75.0	177.8	167.5	10.29	17.276		
2,150.0	2,134.8	2,131.7	2,111.2	5.4	5.7	-115.42	-188.6	77.4	188.8	178.1	10.68	17.670		
2,200.0	2,183.7	2,180.4	2,158.5	5.6	5.9	-115.08	-200.4	79.7	199.7	188.6	11.07	18.033		

Company:	Synergy Resources	Local Co-ordinate Reference:	Well Pratt 14-29D
Project:	SEC.29-T1N-R68W	TVD Reference:	WELL @ 5154.0ft (Original Well Elev)
Reference Site:	Pratt 24-29D Pad Sec.29-T1N-R68W	MD Reference:	WELL @ 5154.0ft (Original Well Elev)
Site Error:	0.0ft	North Reference:	True
Reference Well:	Pratt 14-29D	Survey Calculation Method:	Minimum Curvature
Well Error:	0.0ft	Output errors are at	2.00 sigma
Reference Wellbore	Wellbore #1	Database:	Landmark
Reference Design:	Plan #2 (12-30-10)	Offset TVD Reference:	Offset Datum

Offset Design Pratt 24-29D Pad Sec.29-T1N-R68W - Pratt QD - Wellbore #1 - Plan #2 (12-30-10)													Offset Site Error: 0.0 ft	
Survey Program: 0-MWD													Offset Well Error: 0.0 ft	
Reference		Offset		Semi Major Axis			Distance						Warning	
Measured Depth (ft)	Vertical Depth (ft)	Measured Depth (ft)	Vertical Depth (ft)	Reference (ft)	Offset (ft)	Highside Toolface (°)	Offset Wellbore Centre +N/-S (ft)	+E/-W (ft)	Between Centres (ft)	Between Ellipses (ft)	Minimum Separation (ft)	Separation Factor		
0.0	0.0	1.0	1.0	0.0	0.0	90.26	-0.4	79.8	79.8					
50.0	50.0	51.0	51.0	0.0	0.0	90.26	-0.4	79.8	79.8	79.7	0.09	872.937		
100.0	100.0	101.0	101.0	0.1	0.1	90.26	-0.4	79.8	79.8	79.6	0.20	403.585		
150.0	150.0	151.0	151.0	0.2	0.2	90.26	-0.4	79.8	79.8	79.4	0.42	188.912		
183.0	183.0	184.0	184.0	0.3	0.3	90.26	-0.4	79.8	79.8	79.3	0.57	139.832 CC		
200.0	200.0	200.0	200.0	0.3	0.3	90.26	-0.4	79.8	79.8	79.2	0.65	123.757 ES		
250.0	250.0	249.9	249.9	0.4	0.4	90.45	-0.6	80.2	80.2	79.3	0.86	93.114		
300.0	300.0	298.7	298.7	0.5	0.5	90.97	-1.4	81.2	81.2	80.2	1.08	75.561		
350.0	350.0	347.5	347.5	0.7	0.6	91.81	-2.6	82.9	83.0	81.7	1.29	64.203		
400.0	400.0	396.3	396.1	0.8	0.7	92.92	-4.3	85.2	85.5	84.0	1.51	56.602		
450.0	450.0	444.9	444.6	0.9	0.9	94.25	-6.6	88.3	88.7	87.0	1.74	51.080		
500.0	500.0	493.3	492.8	1.0	1.0	95.74	-9.2	91.9	92.7	90.8	1.96	47.241		
550.0	550.0	541.6	540.8	1.1	1.1	97.35	-12.4	96.2	97.6	95.4	2.20	44.421		
600.0	600.0	589.7	588.5	1.2	1.3	99.00	-16.0	101.2	103.2	100.8	2.43	42.495		
650.0	650.0	637.6	635.9	1.3	1.4	100.67	-20.1	106.7	109.6	107.0	2.67	41.138		
700.0	700.0	685.3	682.9	1.4	1.6	102.31	-24.6	112.9	116.9	114.0	2.90	40.312		
750.0	750.0	732.6	729.6	1.6	1.7	103.89	-29.6	119.6	125.1	121.9	3.14	39.834		
800.0	800.0	779.7	775.8	1.7	1.9	105.39	-35.0	126.9	134.1	130.7	3.38	39.687 SF		
850.0	850.0	826.5	821.5	1.8	2.1	106.81	-40.7	134.8	143.9	140.3	3.62	39.773		
900.0	900.0	872.9	866.7	1.9	2.3	108.13	-46.9	143.2	154.6	150.7	3.86	40.066		
950.0	950.0	919.0	911.4	2.0	2.6	109.36	-53.5	152.2	166.1	162.0	4.10	40.526		
1,000.0	1,000.0	964.7	955.6	2.1	2.8	110.49	-60.4	161.6	178.4	174.1	4.34	41.110		
1,050.0	1,050.0	1,010.0	999.3	2.2	3.0	-68.34	-67.7	171.5	191.4	186.8	4.56	41.952		

Company:	Synergy Resources	Local Co-ordinate Reference:	Well Pratt 14-29D
Project:	SEC.29-T1N-R68W	TVD Reference:	WELL @ 5154.0ft (Original Well Elev)
Reference Site:	Pratt 24-29D Pad Sec.29-T1N-R68W	MD Reference:	WELL @ 5154.0ft (Original Well Elev)
Site Error:	0.0ft	North Reference:	True
Reference Well:	Pratt 14-29D	Survey Calculation Method:	Minimum Curvature
Well Error:	0.0ft	Output errors are at	2.00 sigma
Reference Wellbore	Wellbore #1	Database:	Landmark
Reference Design:	Plan #2 (12-30-10)	Offset TVD Reference:	Offset Datum

Reference Depths are relative to WELL @ 5154.0ft (Original Well Elev) Coordinates are relative to: Pratt 14-29D
Offset Depths are relative to Offset Datum
Central Meridian is 105° 30' 0.000 W °
Coordinate System is US State Plane 1983, Colorado Northern Zone
Grid Convergence at Surface is: 0.30°



Company:	Synergy Resources	Local Co-ordinate Reference:	Well Pratt 14-29D
Project:	SEC.29-T1N-R68W	TVD Reference:	WELL @ 5154.0ft (Original Well Elev)
Reference Site:	Pratt 24-29D Pad Sec.29-T1N-R68W	MD Reference:	WELL @ 5154.0ft (Original Well Elev)
Site Error:	0.0ft	North Reference:	True
Reference Well:	Pratt 14-29D	Survey Calculation Method:	Minimum Curvature
Well Error:	0.0ft	Output errors are at	2.00 sigma
Reference Wellbore	Wellbore #1	Database:	Landmark
Reference Design:	Plan #2 (12-30-10)	Offset TVD Reference:	Offset Datum

Reference Depths are relative to WELL @ 5154.0ft (Original Well Elev) Coordinates are relative to: Pratt 14-29D
Offset Depths are relative to Offset Datum Coordinate System is US State Plane 1983, Colorado Northern Zone
Central Meridian is 105° 30' 0.000 W ° Grid Convergence at Surface is: 0.30°

