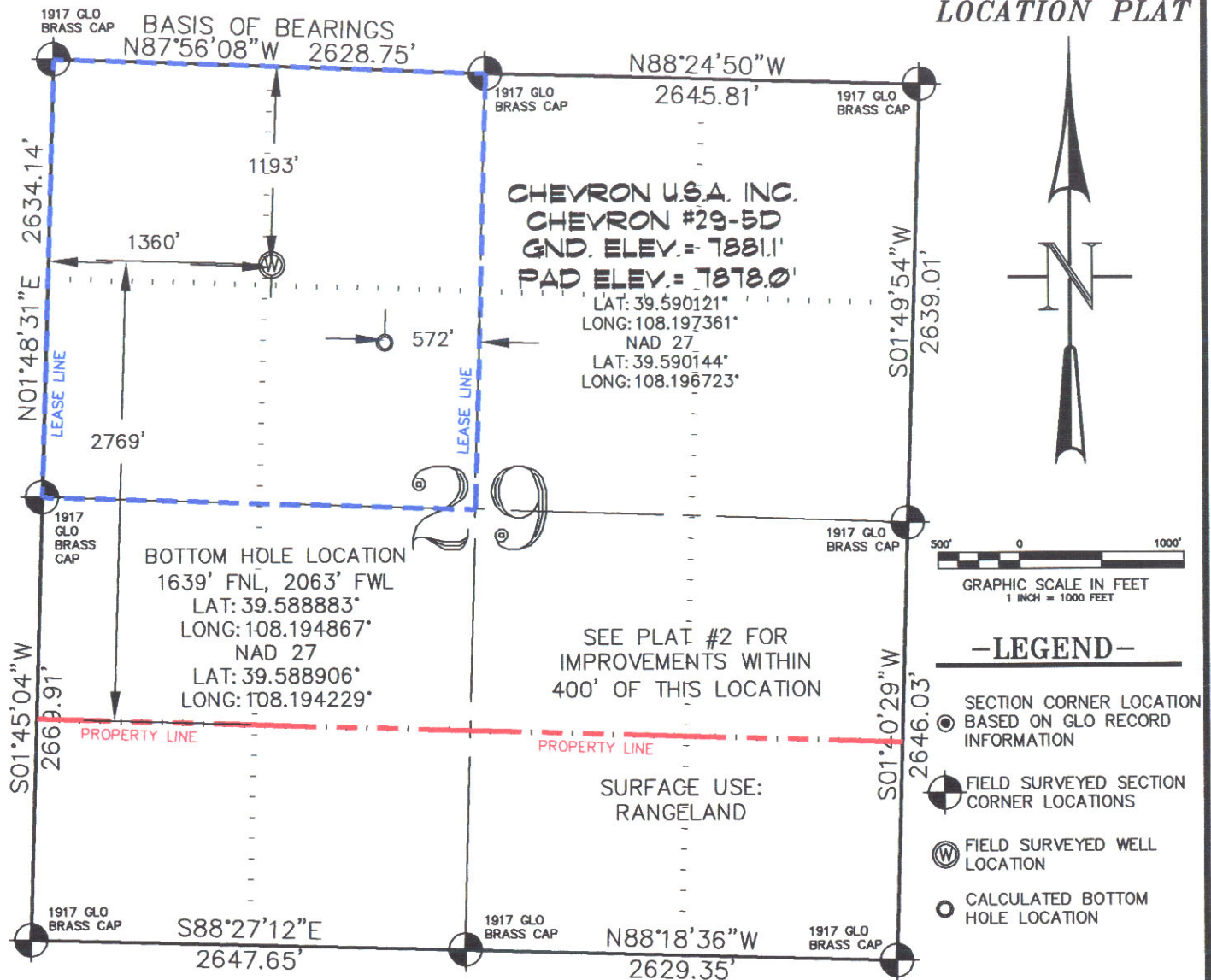


SEC. 29, T. 5 S., R. 96 W. OF THE 6TH P.M.

PLAT #1
LOCATION PLAT



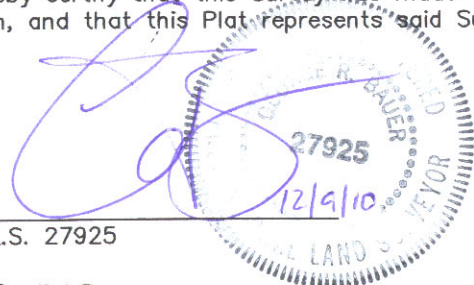
THIS WELL LOCATION PLAT WAS PREPARED FOR BERRY PETROLEUM COMPANY, TO LOCATE THE CHEVRON #29-5D WELL, 1193 FEET FROM THE NORTH LINE AND 1360 FEET FROM THE WEST LINE IN THE NW1/4 NW1/4 OF SECTION 29, T. 5 S., R. 96 W. OF THE 6TH P.M. IN GARFIELD COUNTY, COLORADO.

REFERENCE NOTES

- 1) T. 5 S., R. 96 W., 6TH P.M. GLO PLAT.
- 2) U.S.G.S. QUAD: CIRLCE DOT GULCH, CO
- 3) ELEVATIONS BASED ON N.A.V.D. 1988
- 4) LATITUDES AND LONGITUDES ARE BASED ON NAD 83, COLORADO CENTRAL ZONE.
- 5) GPS OPERATOR ROBERT WOOD, OBSERVED A PDOP OF 2.8.
- 6) ALL GPS OBSERVATIONS ARE IN COMPLIANCE WITH COGCC RULE NO. 215.
- 7) SURFACE AND BOTTOM HOLE LOCATIONS ARE MEASURED 90° FROM SECTION LINES.

SURVEYOR'S CERTIFICATE

I, George R. Bauer: a Professional Land Surveyor in the State of Colorado do hereby certify that this Survey was made under my direct supervision, and that this Plat represents said Survey.



COLORADO P.L.S. 27925



CONSTRUCTION SURVEYS, INC.
0012 SUNRISE BLVD.
SILT, CO 81652
(970)876-5753

VIEW: 11

SURVEYED: 12/06/10	SCALE: 1" = 1000'
DRAFTED: 12/08/10	DWG: BERRY\CD-29-596.DWG
CHECKED: 12/09/10	SHEET: 1 of 11