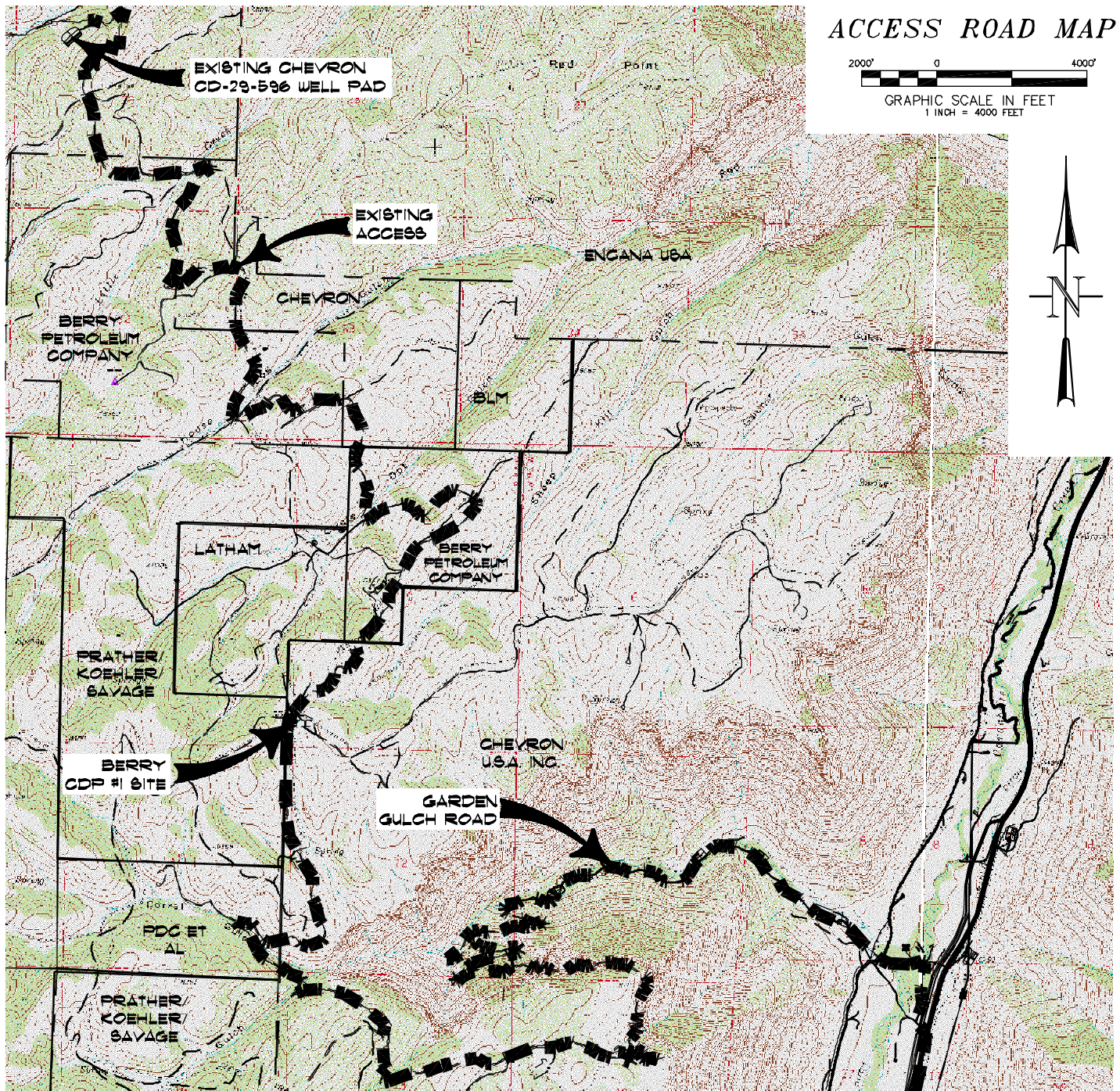
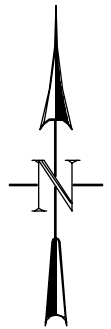


# ACCESS ROAD MAP

2000' 0 4000'  
GRAPHIC SCALE IN FEET  
1 INCH = 4000 FEET



## ACCESS:

FROM THE INTERSECTION OF HIGHWAY 6 & 24 AND COUNTY ROAD 215 AT PARACHUTE, PROCEED IN A GENERAL NORTHWESTERLY DIRECTION ALONG COUNTY ROAD 215  $\pm 7.2$  MILES TO AN INTERSECTION WITH A DIRT/GRAVEL ROAD ON THE LEFT, PROCEED LEFT IN A GENERAL NORTHWESTERLY DIRECTION  $\pm 350$  FEET TO AN INTERSECTION WITH A DIRT/GRAVEL ROAD ON THE RIGHT, PROCEED RIGHT IN A GENERAL NORTHERLY DIRECTION  $\pm 0.3$  MILES TO AN INTERSECTION WITH A DIRT/GRAVEL ROAD ON THE LEFT, PROCEED LEFT IN A GENERAL WESTERLY DIRECTION CROSSING THE PARACHUTE CREEK BRIDGE, PROCEED IN A GENERAL WESTERLY DIRECTION ALONG THE GARDEN GULCH ROAD ASCENDING THRU THE BOOKCLIFFS  $\pm 9.1$  MILES TO THE BERRY CDP SITE ON THE RIGHT, CONTINUE FORWARD PAST THE BERRY CDP SITE IN A GENERAL NORTHEASTERLY DIRECTION  $\pm 6.5$  MILES TO AN INTERSECTION WITH THE EXISTING CHEVRON #CD-29-596 WELL PAD ON THE LEFT, BEING THE LOCATION.



CONSTRUCTION SURVEYS, INC.  
0012 SUNRISE BLVD.  
SILT, CO 81652  
(970)876-5753

Chevron CD-29-596  
NENW, SECTION 29, T. 5 S., R. 96 W.  
BERRY PETROLEUM COMPANY

SCALE: 1" = 4000'

SHEET 4 OF 11