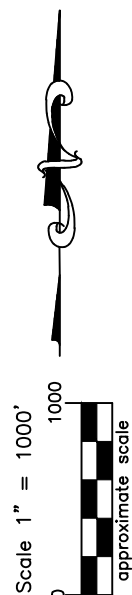
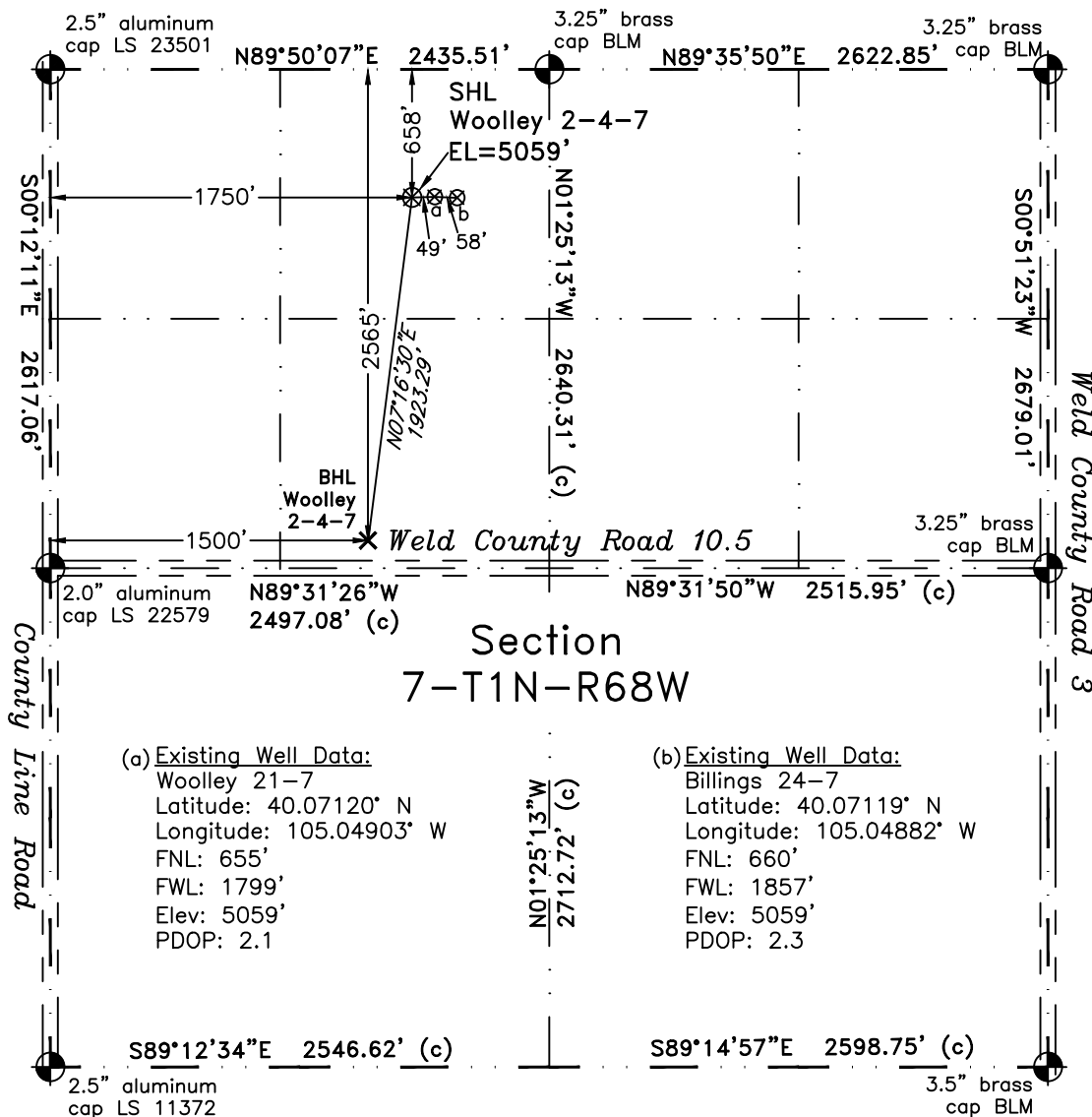


PLS Group, LLC
109 Coronado Ct. — Bldg 7
Fort Collins, Colorado 80525

WELL LOCATION CERTIFICATE

THIS MAP DOES NOT
REPRESENT A BOUNDARY SURVEY



LEGEND
— found survey monument
— calculated dimension
● (c)

(a) Existing Well Data:

Woolley 21-7
Latitude: 40.07120° N
Longitude: 105.04903° W
FNL: 655'
FWL: 1799'
Elev: 5059'
PDOP: 2.1

(b) Existing Well Data:

Billings 24-7
Latitude: 40.07119° N
Longitude: 105.04882° W
FNL: 660'
FWL: 1857'
Elev: 5059'
PDOP: 2.3

Proposed Surface Hole Data:

Latitude: N 40.07120° BHL(40.06596°)
Longitude: W 105.04920° BHL(105.05011°)

Nearest: Building 1366' northwest Above Ground Utility 1785' west
Public Road 1735' west Railroad 4,470' southeast
Property Line 355' northwest
PDOP: 2.2

Notes:

- 1) Bearings and distances based upon NAD 83 Colorado North State Plane Coordinates using RTK GPS observations taken on 11/03/2010 by operator Craig Burke.
- 2) Conversion factor to ground (1.000277368).
- 3) Elevations based on NAVD 88 GPS heights and Geoid 2003 corrections.
- 4) See improvement map for visible improvements within 400 feet of pad site.
- 5) The location falls on agricultural land.

NOTICE: According to Colorado law you MUST commence any legal action based upon any defect in this W.L.C. within three years after you first discover such defect. In no event may any action based upon any defect in this W.L.C. be commenced more than ten years from this said date of the certification shown hereon.

I hereby certify that this Well Location Certificate was prepared by me or my duly authorized supervisor, John Robert McGehee, for and on behalf of PLS Group, LLC, an oil and gas company, that it is not a Land Survey, that it is not an Improvement Survey, that it is not to be relied upon for establishment of fences, buildings, or other future improvement lines.

John Robert McGehee LS#38219
Well: Woolley 2-4-7