

T11N, R97W, 6th P.M.

WEXPRO COMPANY

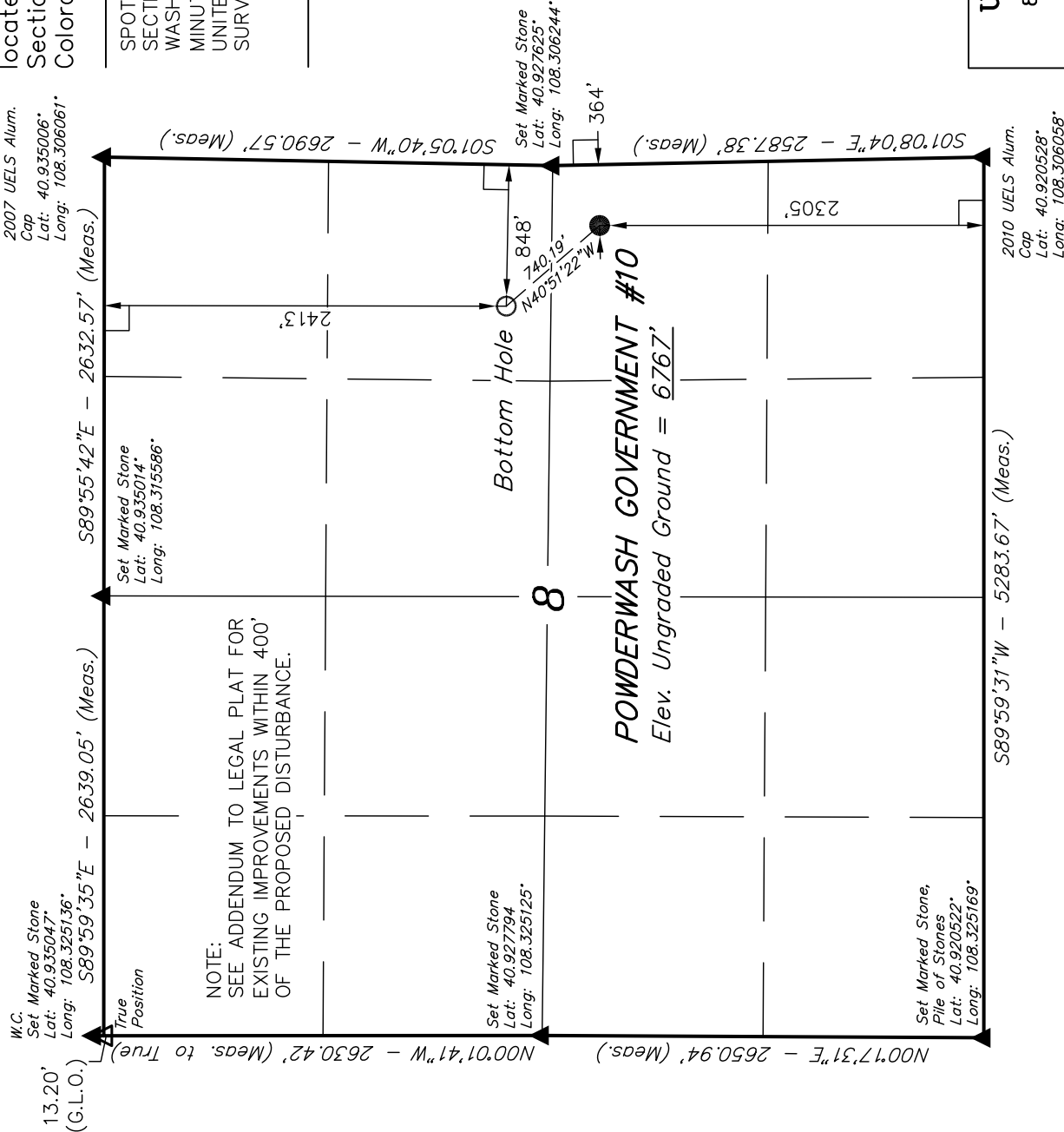
Well location, POWDERWASH GOVERNMENT #10, located as shown in the NE 1/4 SE 1/4 of Section 8, T11N, R97W, 6th P.M., Moffat County, Colorado.

BASIS OF ELEVATION

SPOT ELEVATION LOCATED AT THE SOUTHEAST CORNER OF SECTION 4, T11N, R97W, 6th P.M. TAKEN FROM THE POWDER WASH QUADRANGLE, COLORADO, MOFFAT COUNTY, 7.5 MINUTE SERIES (TOPOGRAPHICAL MAP) PUBLISHED BY THE UNITED STATES DEPARTMENT OF THE INTERIOR, GEOLOGICAL SURVEY. SAID ELEVATION IS MARKED AS BEING 6644 FEET.

BASIS OF BEARINGS

BASIS OF BEARINGS IS A G.P.S. OBSERVATION.



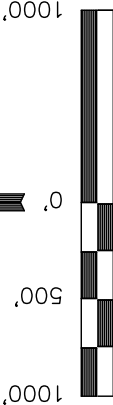
LEGEND:

- └─ = 90° SYMBOL
- = PROPOSED WELL HEAD.
- ▲ = SECTION CORNERS LOCATED.

NAD 83 (TARGET BOTTOM HOLE)	NAD 83 (SURFACE LOCATION)
LATITUDE = 40°55'42.20" (40.928389)	LATITUDE = 40°55'36.67" (40.926853)
LONGITUDE = 108°18'33.46" (108.309294)	LONGITUDE = 108°18'27.15" (108.307542)
NAD 27 (TARGET BOTTOM HOLE)	NAD 27 (SURFACE LOCATION)
LATITUDE = 40°55'42.33" (40.928425)	LATITUDE = 40°55'36.80" (40.926889)
LONGITUDE = 108°18'31.12" (108.308644)	LONGITUDE = 108°18'24.81" (108.306892)

PDOP = 2.5

UNTAH ENGINEERING & LAND SURVEYING			
85 SOUTH 200 EAST - VERNAL, UTAH 84078			
(435) 789-1017			
SCALE 1" = 1000'	DATE SURVEYED: 07-21-10	DATE DRAWN: 08-31-10	
PARTY D.K. J.D. C.H.	REFERENCES G.L.O. PLAT		
WEATHER WARM	FILE		
			WEXPRO COMPANY



SCALE

CERTIFICATE

THIS IS TO CERTIFY THAT THE ABOVE PLAT WAS PREPARED FROM FIELD NOTES OF ACTUAL SURVEYS MADE BY ME OR UNDER MY SUPERVISION AND THAT THE SAME ARE TRUE AND CORRECT TO THE BEST OF MY KNOWLEDGE AND BELIEF.

*[Signature]*  
REGISTERED LAND SURVEYOR  
REGISTRATION NO. 17492  
STATE OF COLORADO