

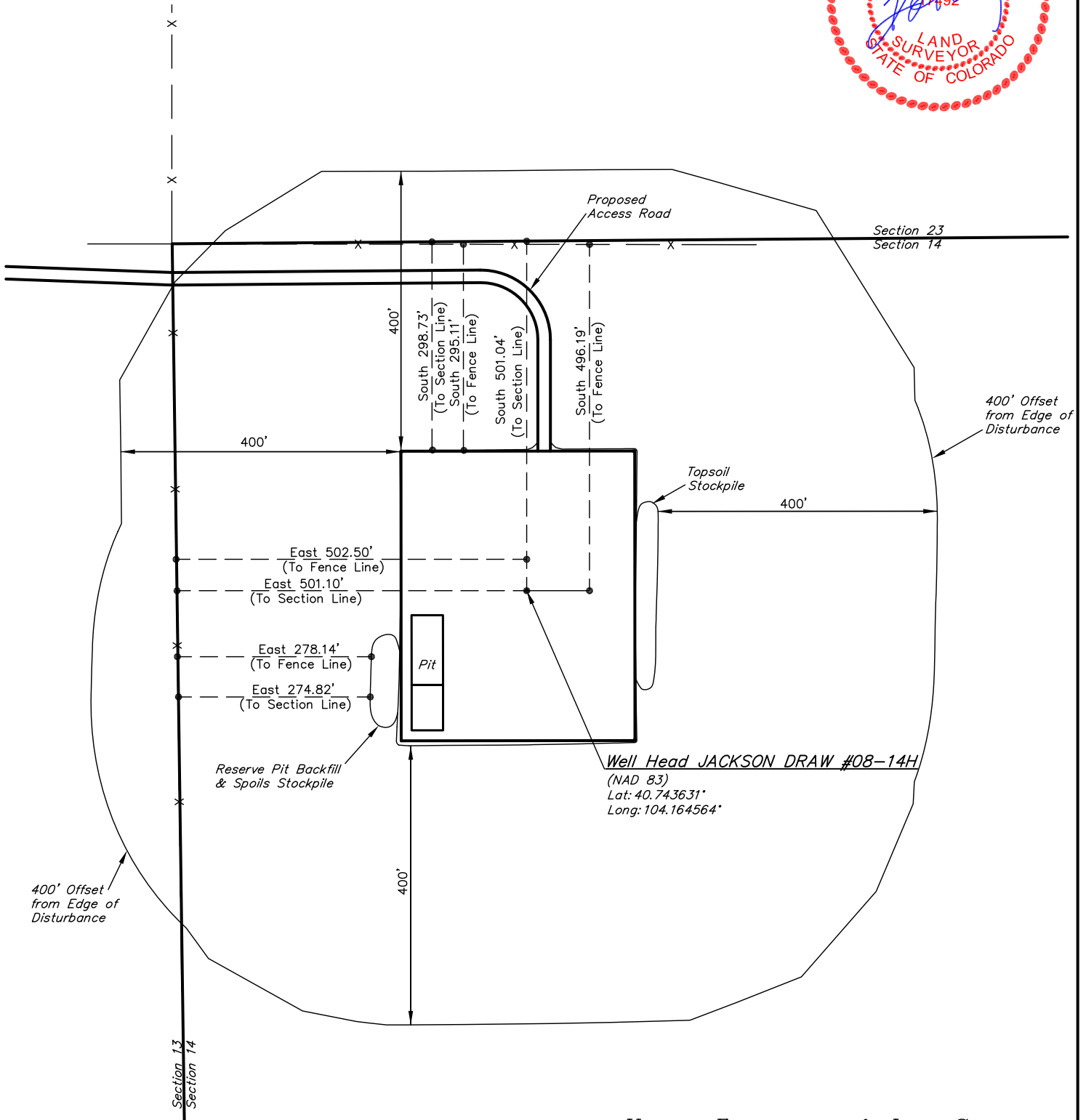
EOG RESOURCES, INC.

ADDENDUM TO LEGAL PLAT FOR

JACKSON DRAW #08-14H
SECTION 14, T9N, R61W, 6TH P.M.
501' FSL 501' FEL



SCALE: 1" = 200'
DATE: 12-02-10
DRAWN BY: M.D.



UINTAH ENGINEERING & LAND SURVEYING

85 So. 200 East * Vernal, Utah 84078 * (435) 789-1017

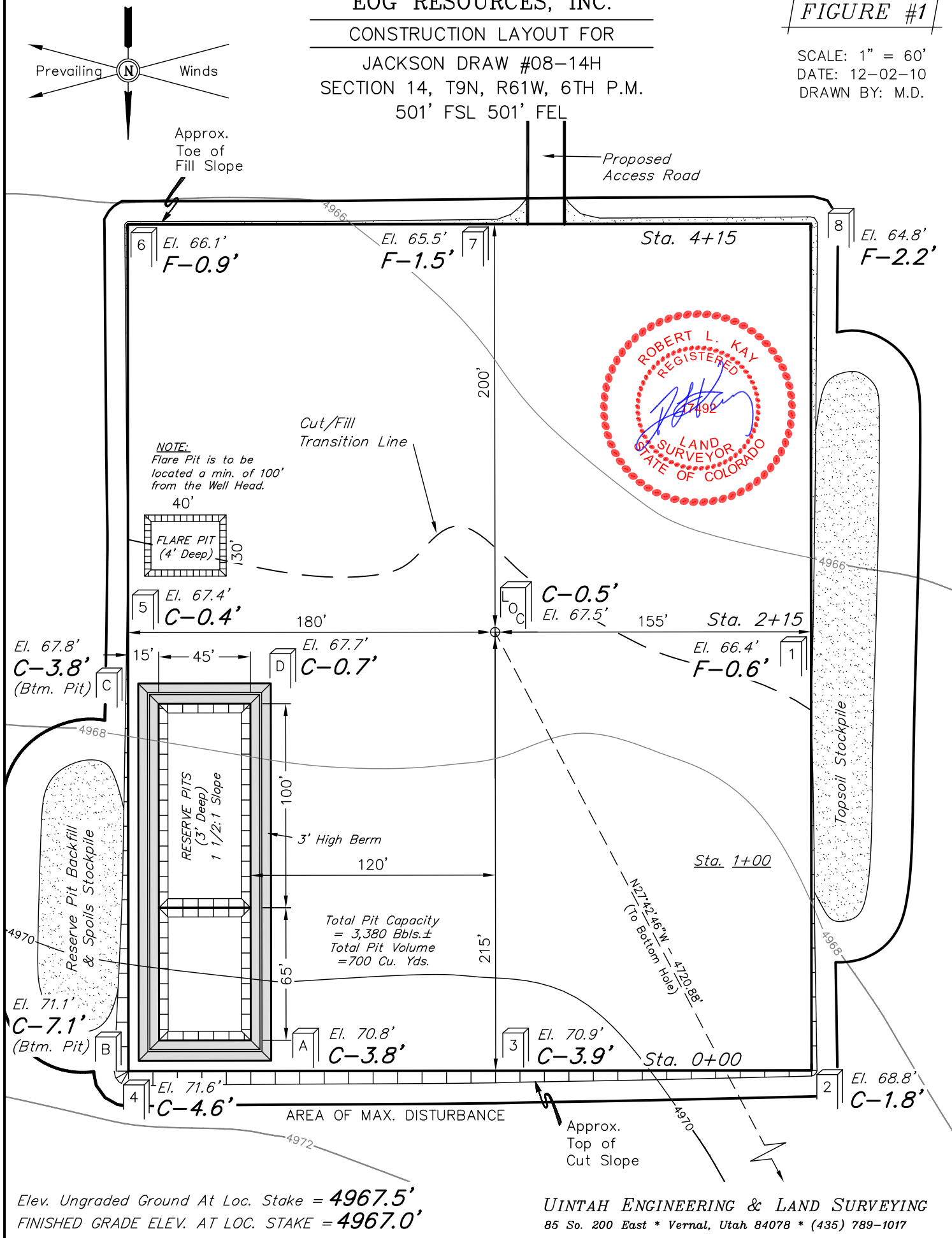
EOG RESOURCES, INC.

CONSTRUCTION LAYOUT FOR

JACKSON DRAW #08-14H
SECTION 14, T9N, R61W, 6TH P.M.
501' FSL 501' FEL

FIGURE #1

SCALE: 1" = 60'
DATE: 12-02-10
DRAWN BY: M.D.



EOG RESOURCES, INC.

FIGURE #2

CONSTRUCTION LAYOUT CROSS SECTION FOR

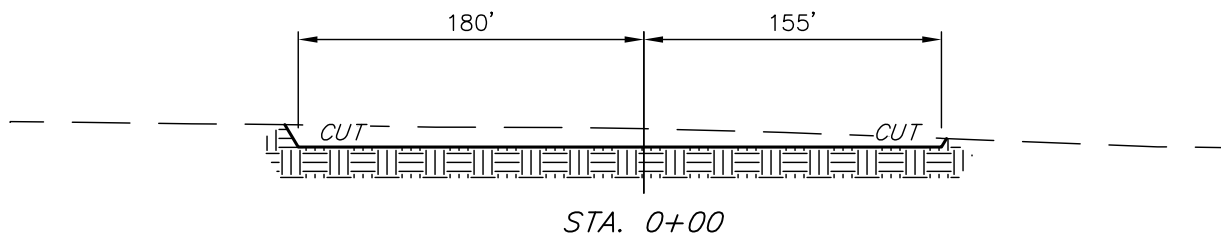
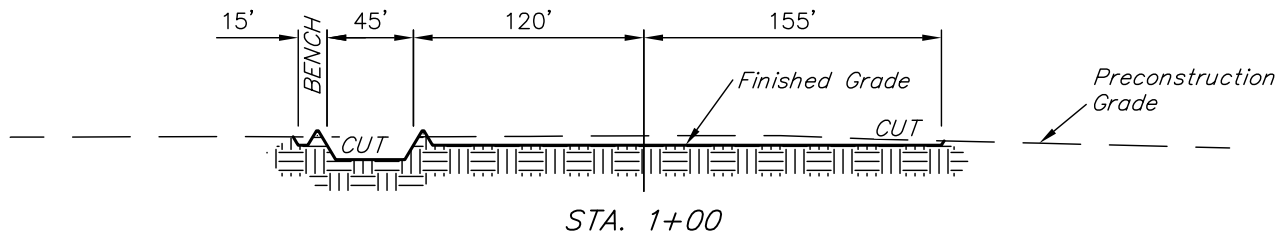
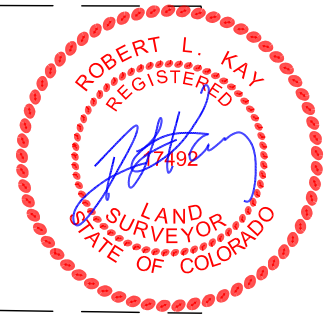
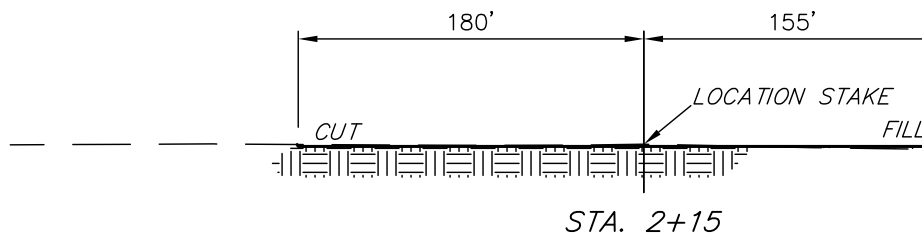
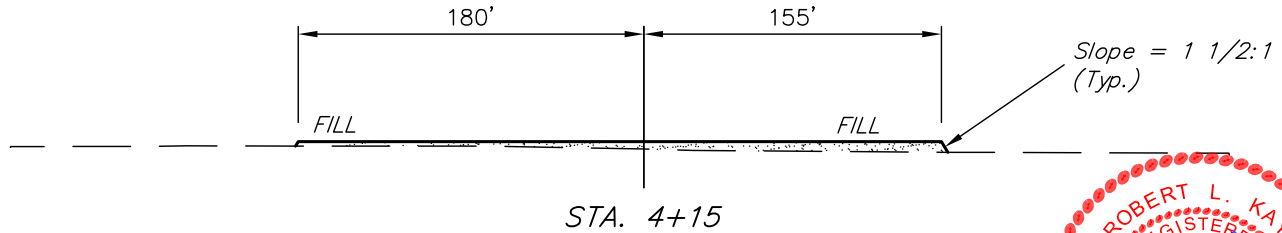
JACKSON DRAW #08-14H

SECTION 14, T9N, R61W, 6TH P.M.

501' FSL 501' FEL

1" = 40'
X-Section
Scale
1" = 100'

DATE: 12-02-10
DRAWN BY: M.D.



NOTE:

Topsoil should not be Stripped Below Finished Grade on Substructure Area.

APPROXIMATE ACREAGES

WELL SITE DISTURBANCE = ± 4.094 ACRES
ACCESS ROAD DISTURBANCE = ± 3.768 ACRES
TOTAL = ± 7.862 ACRES

* NOTE:
FILL QUANTITY INCLUDES 5% FOR COMPACTION

APPROXIMATE YARDAGES

(6") Topsoil Stripping = 2,690 Cu. Yds.
Remaining Location = 4,010 Cu. Yds.
TOTAL CUT = 6,700 CU.YDS.
FILL = 3,660 CU.YDS.

EXCESS MATERIAL = 3,040 Cu. Yds.
Topsoil & Pit Backfill = 3,040 Cu. Yds.
(1/2 Pit Vol.)
EXCESS UNBALANCE = 0 Cu. Yds.
(After Interim Rehabilitation)

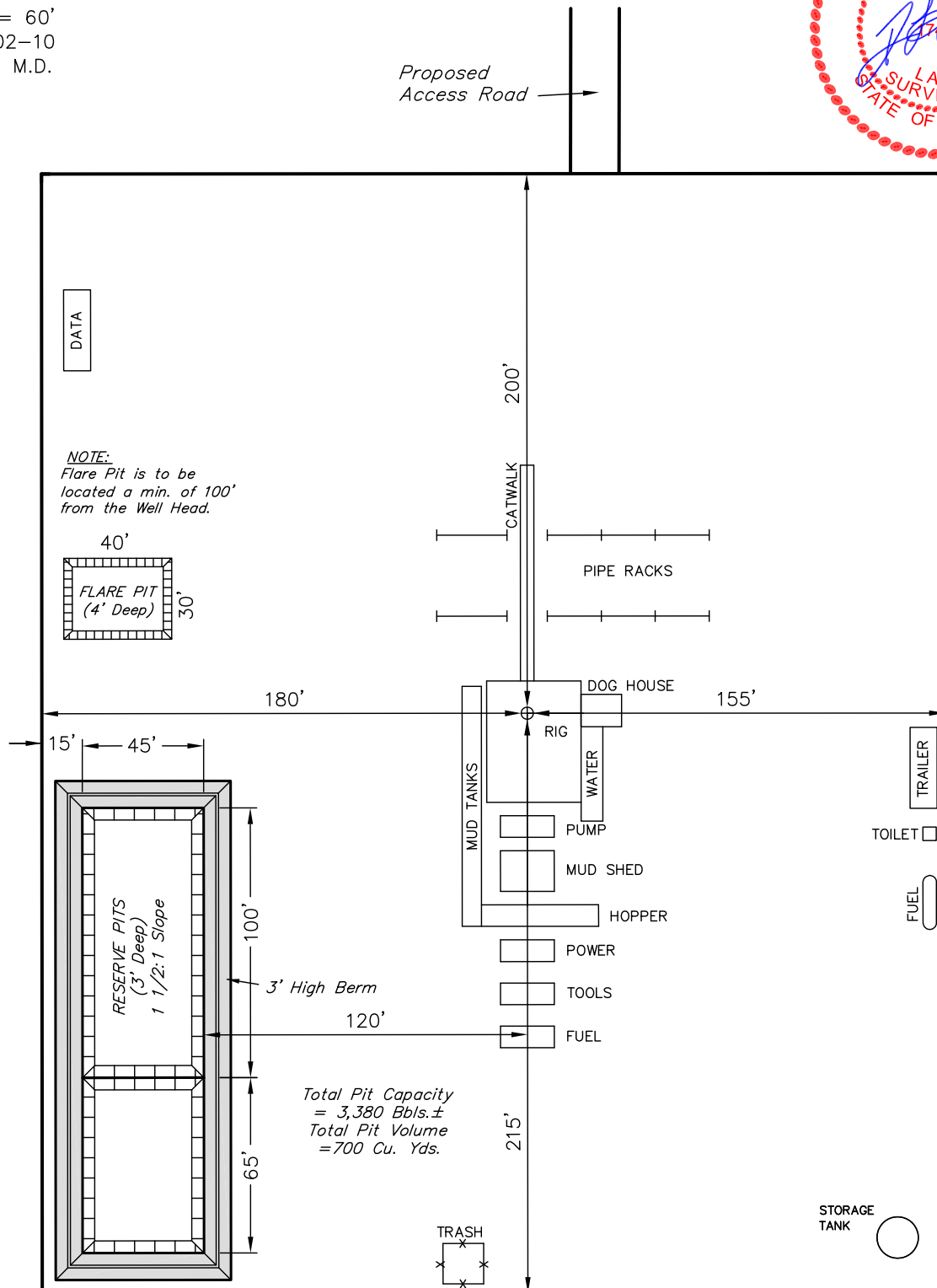
UINTAH ENGINEERING & LAND SURVEYING
85 So. 200 East * Vernal, Utah 84078 * (435) 789-1017



SCALE: 1" = 60'
DATE: 12-02-10
DRAWN BY: M.D.

EOG RESOURCES, INC.
TYPICAL RIG LAYOUT FOR
JACKSON DRAW #08-14H
SECTION 14, T9N, R61W, 6TH P.M.
501' FSL 501' FEL

FIGURE #3

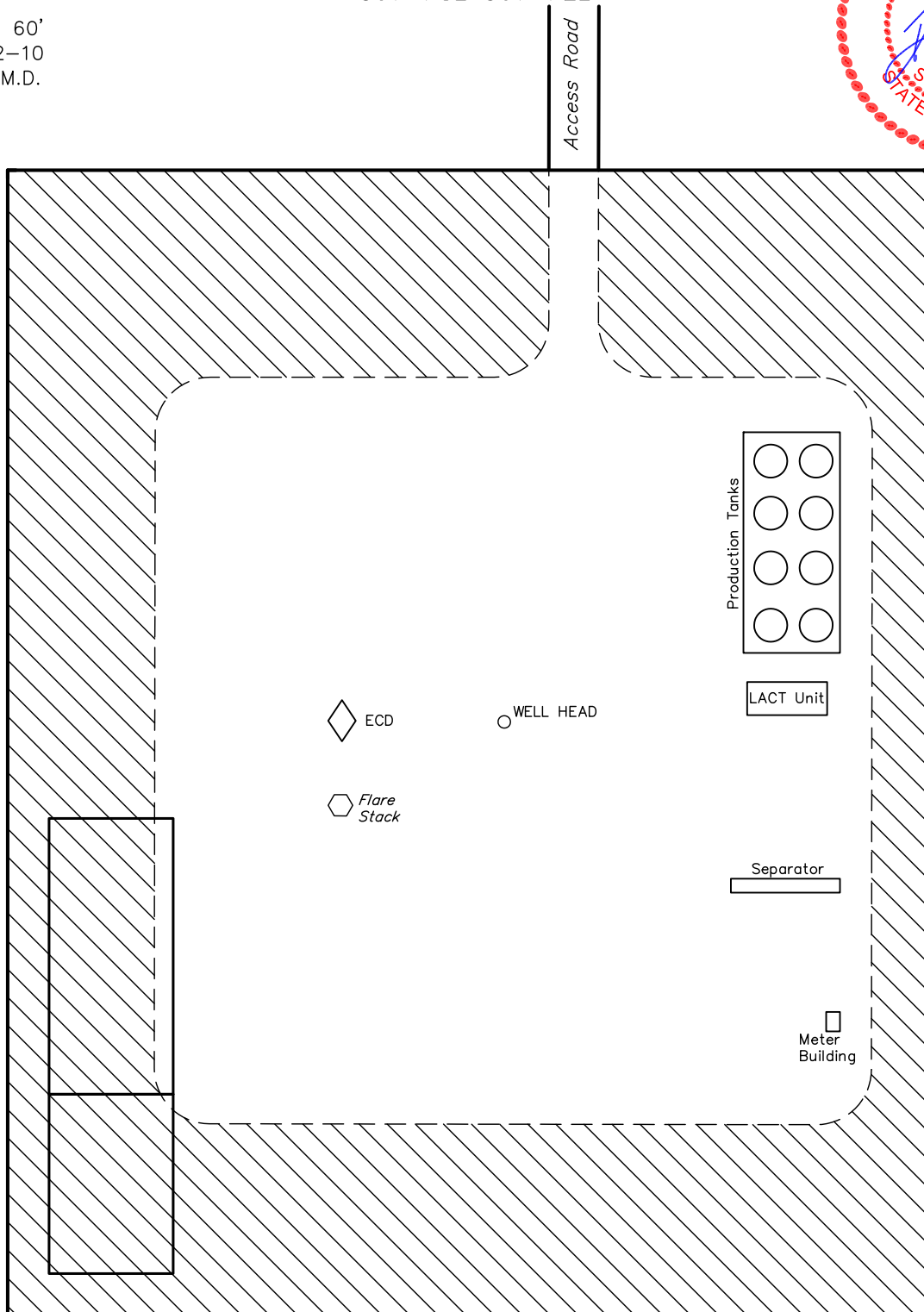




SCALE: 1" = 60'
DATE: 12-02-10
DRAWN BY: M.D.

EOG RESOURCES, INC.
RECLAMATION DIAGRAM FOR
JACKSON DRAW #08-14H
SECTION 14, T9N, R61W, 6TH P.M.
501' FSL 501' FEL

FIGURE #4



APPROXIMATE ACREAGES
UN-RECLAIMED = ± 1.687 ACRES



