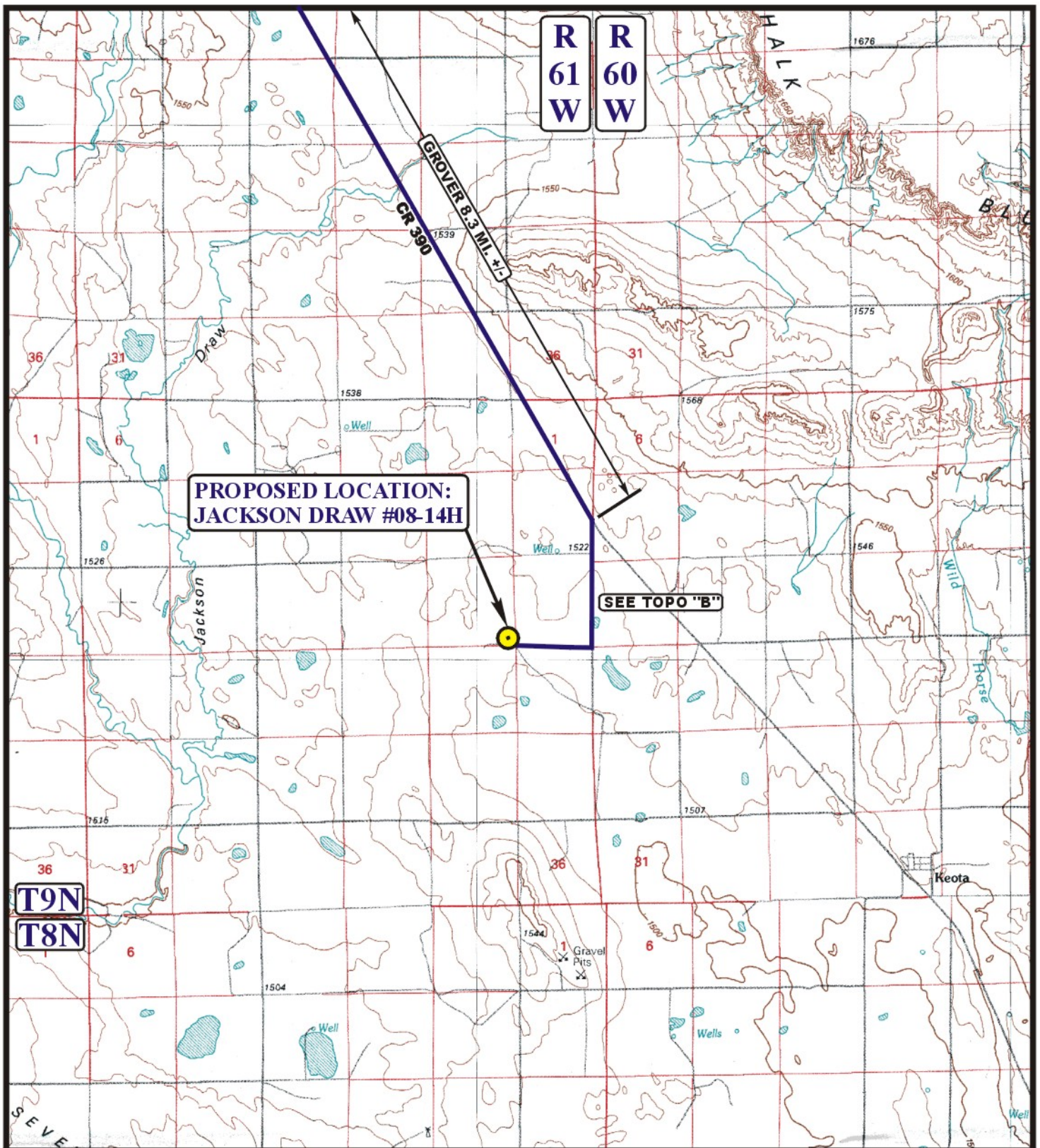


EOG RESOURCES, INC.
JACKSON DRAW #08-14H
SECTION 14, T9N, R61W, 6th P.M.

PROCEED IN A SOUTHEASTERLY DIRECTION FROM GROVER, COLORADO ALONG COUNTY ROAD 390 APPROXIMATELY 8.3 MILES TO THE JUNCTION OF THIS ROAD AND COUNTY ROAD 97 TO THE SOUTH; TURN RIGHT AND PROCEED IN A SOUTHERLY DIRECTION APPROXIMATELY 1.4 MILES TO THE BEGINNING OF THE PROPOSED ACCESS TO THE WEST; FOLLOW ROAD FLAGS IN A WESTERLY DIRECTION APPROXIMATELY 5,471' TO THE PROPOSED LOCATION.

TOTAL DISTANCE FROM GROVER, COLORADO TO THE PROPOSED WELL LOCATION IS APPROXIMATELY 10.7 MILES.



LEGEND:

● PROPOSED LOCATION

N

EOG RESOURCES, INC.

JACKSON DRAW #08-14H
SECTION 14, T9N, R61W, 6th P.M.
501' FSL 501' FEL



Uintah Engineering & Land Surveying
85 South 200 East Vernal, Utah 84078
(435) 789-1017 * FAX (435) 789-1813

ACCESS ROAD
MAP

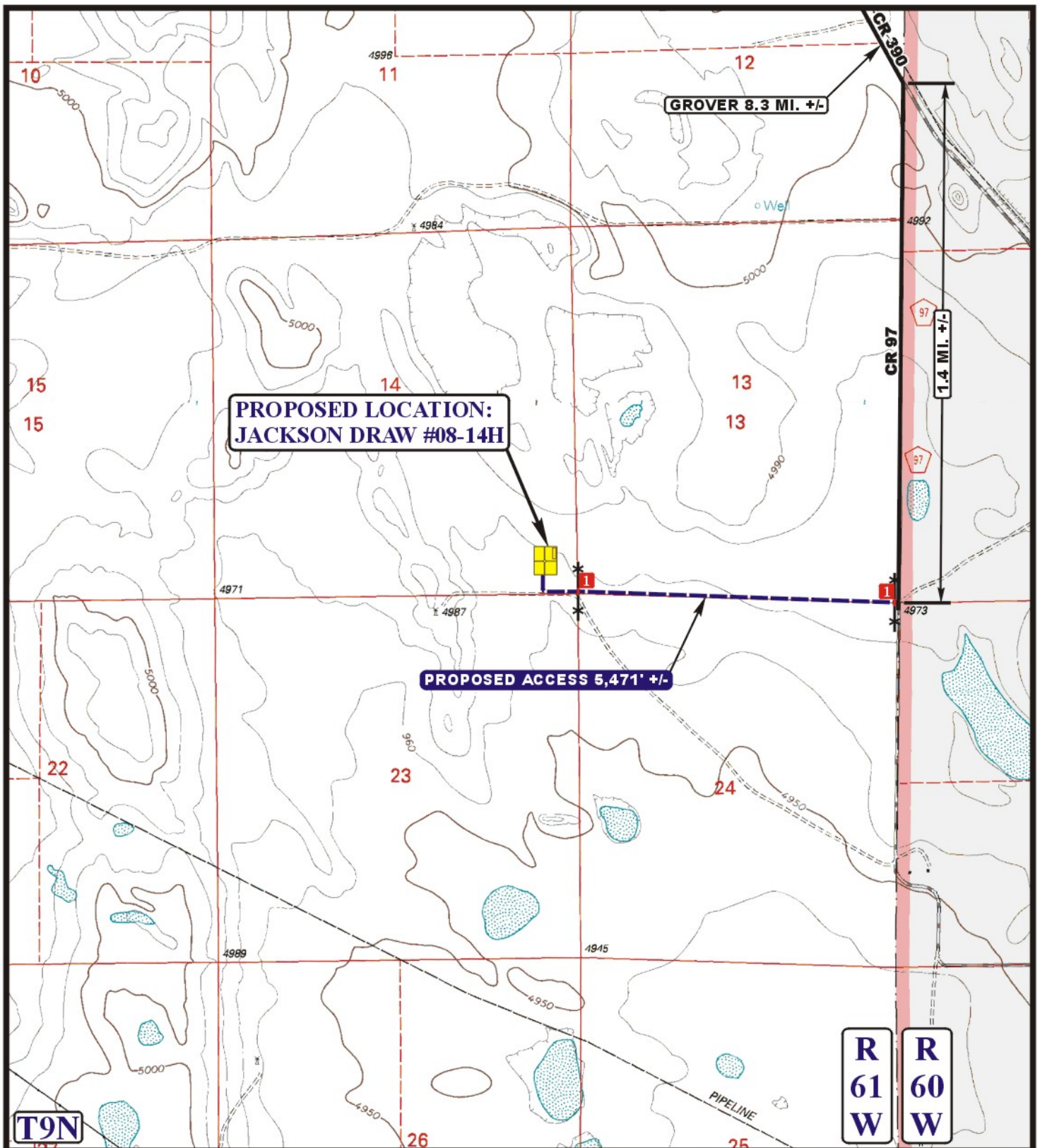
12 04 10
MONTH DAY YEAR

SCALE: 1:100,000

DRAWN BY: J.J.

REVISED: 00-00-00

A
TOPO



LEGEND:

- EXISTING ROAD
- PROPOSED ACCESS ROAD
- EXISTING FENCE
- INSTALL CATTLE GUARD



Utah Engineering & Land Surveying
85 South 200 East Vernal, Utah 84078
(435) 789-1017 * FAX (435) 789-1813



EOG RESOURCES, INC.

JACKSON DRAW #08-14H
SECTION 14, T9N, R61W, 6th P.M.
501' FSL 501' FEL

**ACCESS ROAD
MAP**

12 04 10
MONTH DAY YEAR

SCALE: 1" = 2000' DRAWN BY: J.J. REVISED: 00-00-00

**B
TOPO**