

# T1S, R99W, 6th P.M.

## MESA ENERGY PARTNERS, LLC

Well location, BDU 15-10-199, located as shown in the NW 1/4 SE 1/4 of Section 15, T1S, R99W, 6th P.M., Rio Blanco County, Colorado.

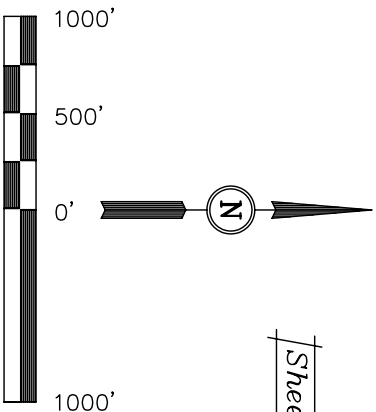
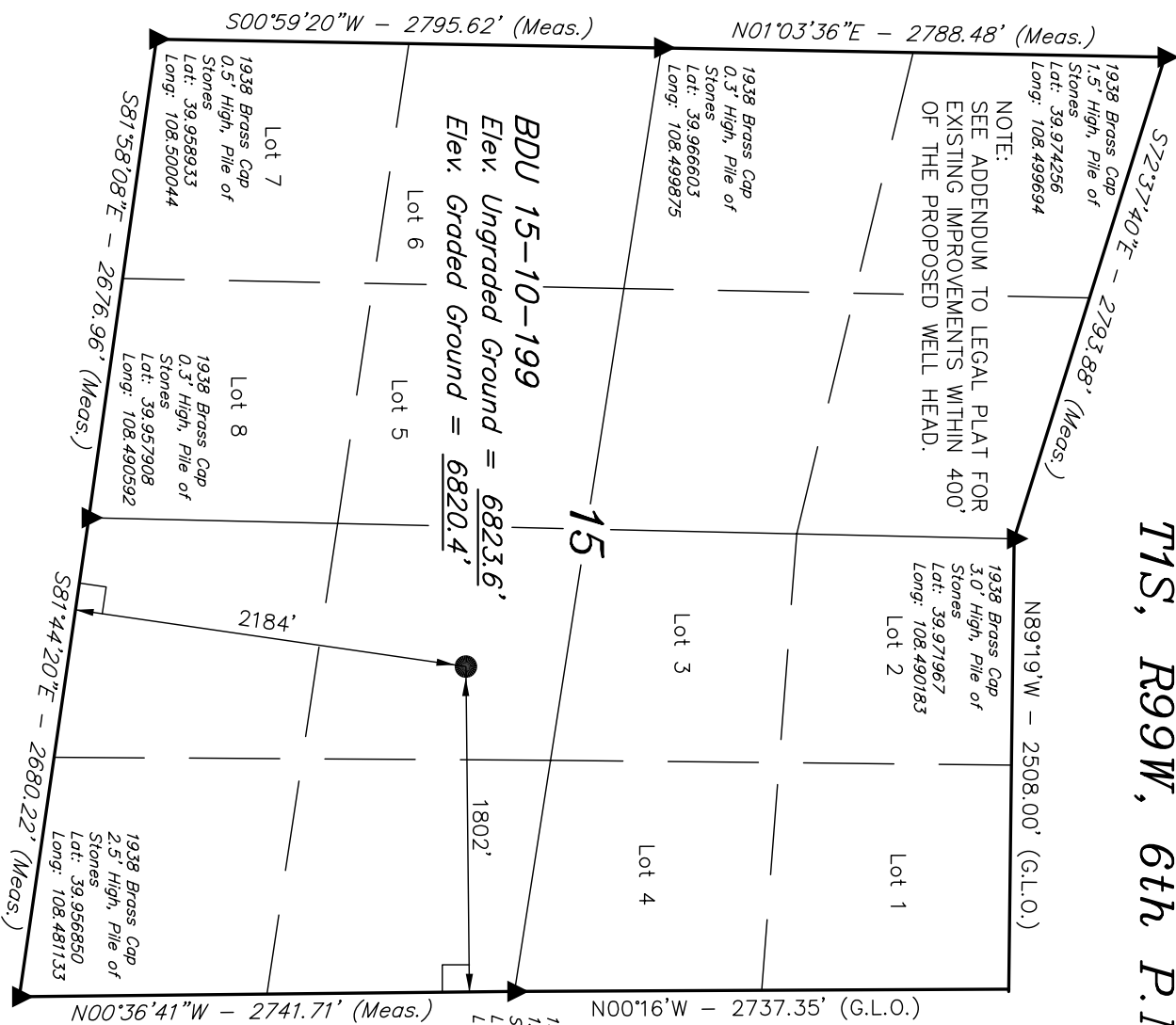
### BASIS OF ELEVATION

SPOT ELEVATION AT THE SOUTHWEST CORNER OF SECTION 2, T1S, R98W, 6th P.M. TAKEN FROM THE WOLF RIDGE QUADRANGLE, COLORADO, RIO BLANCO COUNTY, 7.5 MINUTE SERIES (TOPOGRAPHICAL MAP) PUBLISHED BY THE UNITED STATES DEPARTMENT OF THE INTERIOR, GEOLOGICAL SURVEY. SAID ELEVATION IS MARKED AS BEING 6663 FEET.

### BASIS OF BEARINGS

BASIS OF BEARINGS IS A G.P.S. OBSERVATION.

Sheet 1a of 11



### CERTIFICATE

THIS IS TO CERTIFY THAT THE ABOVE PLAT WAS PREPARED FROM FIELD NOTES OF ACTUAL SURVEYS MADE BY ME OR UNDER MY SUPERVISION AND THAT THE SAME ARE TRUE AND CORRECT TO THE BEST OF MY KNOWLEDGE AND BELIEF.

Revised: 12-17-10 D.R.B.  
 REVISED: 04-21-09  
 REVISED: 03-27-09

REGISTERED LAND SURVEYOR  
 REGISTRATION NUMBER 7490  
 STATE OF COLORADO

**UINTAH ENGINEERING & LAND SURVEYING**  
**85 SOUTH 200 EAST - VERNAL, UTAH 84078**  
 (435) 789-1017

|       |            |                |          |             |          |
|-------|------------|----------------|----------|-------------|----------|
| SCALE | 1" = 1000' | DATE SURVEYED: | 03-11-09 | DATE DRAWN: | 03-12-09 |
|-------|------------|----------------|----------|-------------|----------|

|         |      |      |      |            |                           |
|---------|------|------|------|------------|---------------------------|
| PARTY   | B.H. | B.B. | C.H. | REFERENCES | G.L.O. PLAT               |
| WEATHER | COOL |      |      | FILE       | MESA ENERGY PARTNERS, LLC |

PDOP = 1.4

|                           |                            |
|---------------------------|----------------------------|
| NAD 83 (SURFACE LOCATION) |                            |
| LATITUDE =                | 39°57'49.09" (39.963636)   |
| LONGITUDE =               | 108°29'15.56" (108.487656) |
| NAD 27 (SURFACE LOCATION) |                            |
| LATITUDE =                | 39°57'49.19" (39.963664)   |
| LONGITUDE =               | 108°29'13.22" (108.487006) |

### LEGEND:

- = 90° SYMBOL
- = PROPOSED WELL HEAD.
- ▲ = SECTION CORNERS LOCATED.