

LOCATION DRAWING

VEGETATION:
NATIVE GRASSES

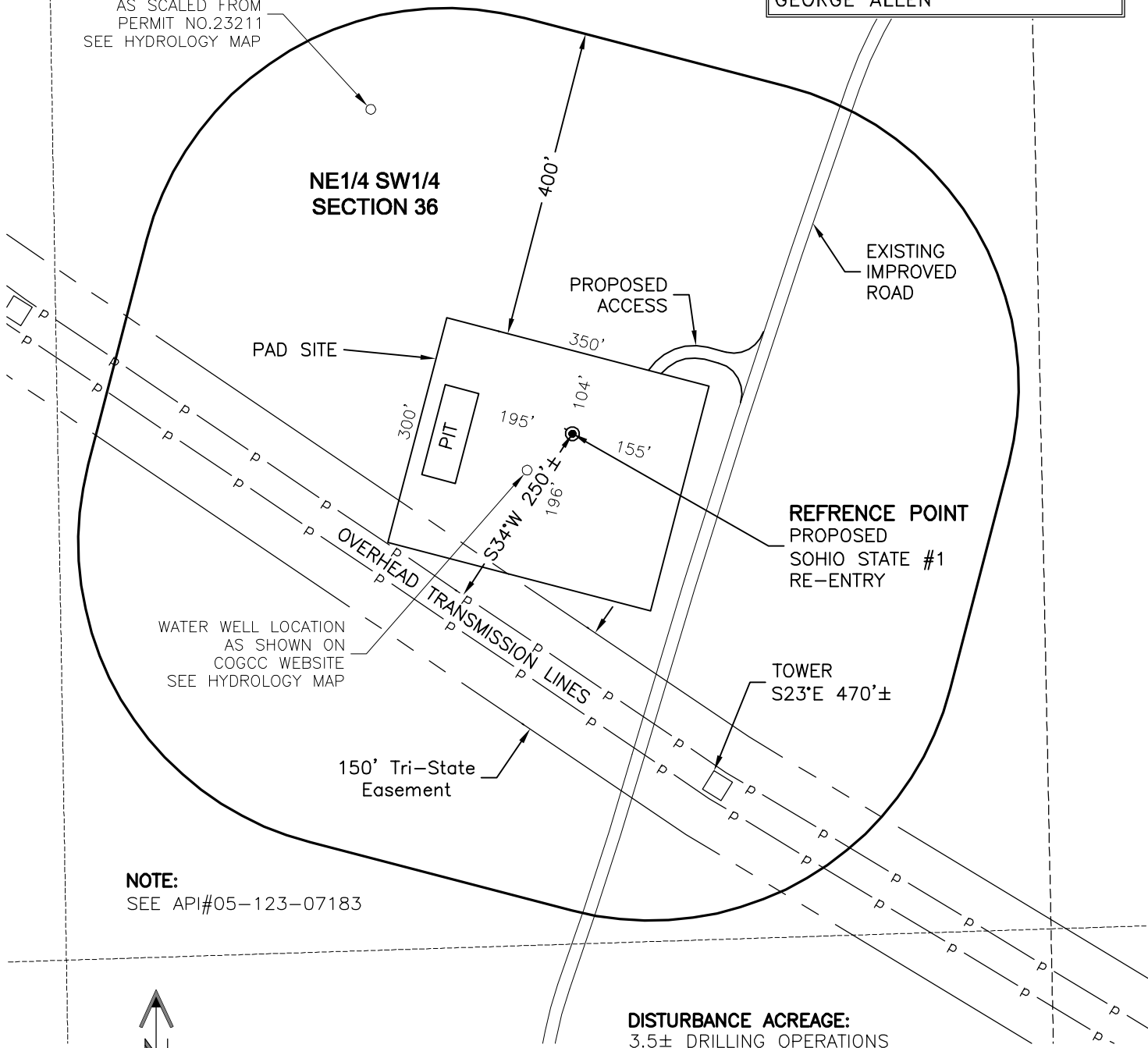
SURFACE USE:
GRAZING

GROUND SLOPE <10%

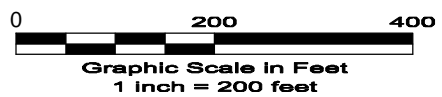
REFERENCE POINT
LATITUDE: 40.70368
LONGITUDE: -104.15586
FOOTAGE: 1947 FSL 1934 FWL
GROUND ELEVATION: 4999.4
PDOP: 2.4 DATE: 12/20/2010
INSTRUMENT OPERATOR: GEORGE ALLEN

WATER WELL LOCATION
AS SCALED FROM
PERMIT NO.23211
SEE HYDROLOGY MAP

**NE1/4 SW1/4
SECTION 36**



NOTE:
SEE API#05-123-07183



DISTURBANCE ACREAGE:
3.5± DRILLING OPERATIONS
1.5± INTERIM RECLAIM

1/4/11

LAND SURVEYING AND MAPPING
LAFAYETTE - WINTER PARK
Ph 303 666 0379 Fx 303 665 6320

CARRIZO OIL & GAS, INC
SOHIO STATE #1 RE-ENTRY

NE1/4 SW1/4 SEC. 36 T9N R61W
6th PM WELD COUNTY COLORADO

DWG: G:\GEO SURV\Weld\North\Carrizo\Wellplats\Sohio State #1 Re-Entry Form 2A.dwg USER: MTC DATE: Jan 04, 2011 4:33pm