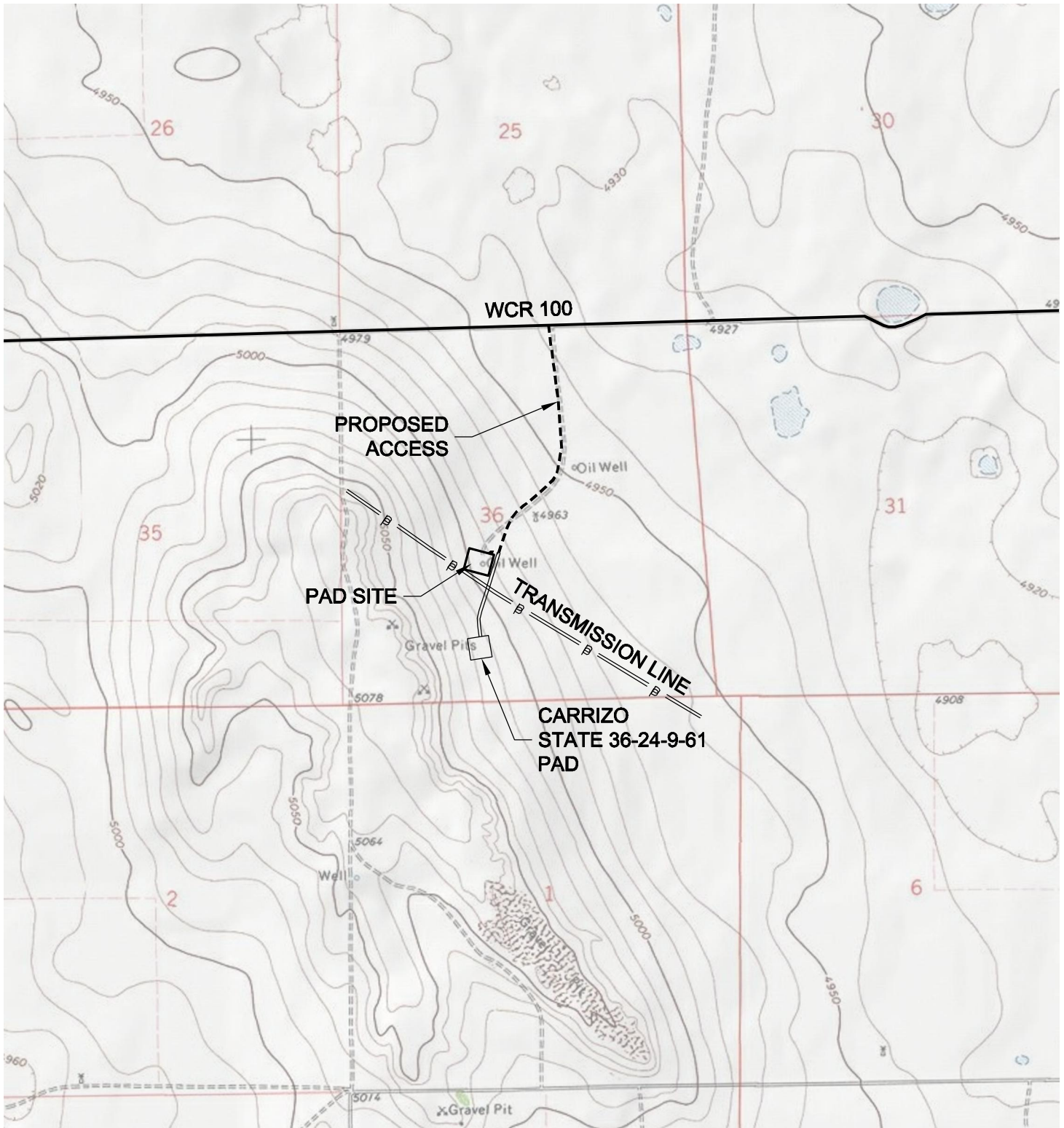


ACCESS ROAD MAP

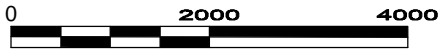
SOHIO STATE #1 PAD



DWG: G:\GEO SURV\Weld\North\Carrizo\Well\Plat\SOHIO State #1 Re-Entry Plat.dwg USER: MTC DATE: Jan 04, 2011 4:29pm



North



Graphic Scale in Feet
1 inch = 2000 feet



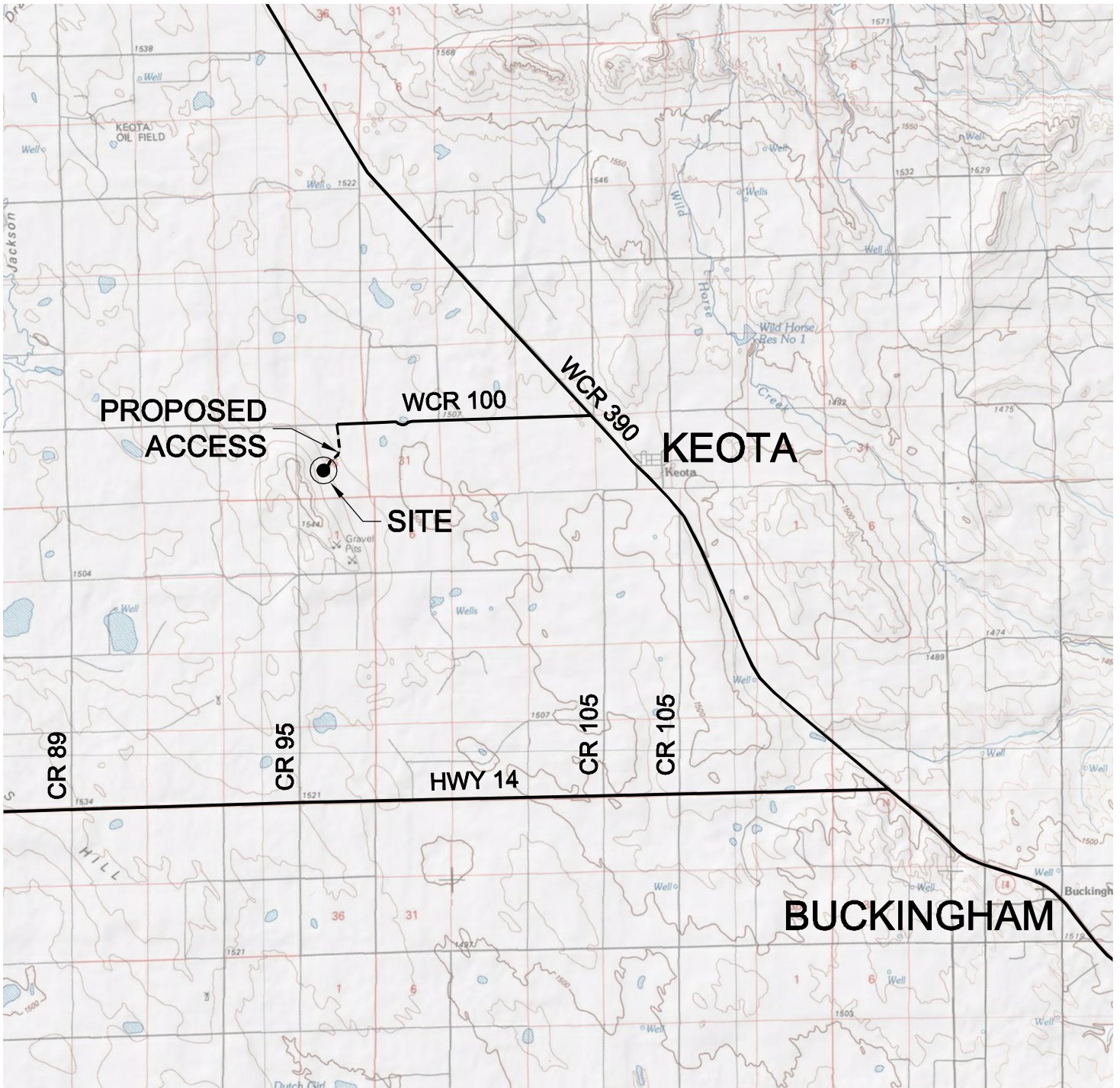
LAND SURVEYING AND MAPPING
LAFAYETTE - WINTER PARK
Ph 303 666 0379 Fx 303 665 6320

CARRIZO OIL & GAS, INC
SOHIO STATE #1 RE-ENTRY

NE1/4 SW1/4 SEC. 36 T9N R61W
6th PM WELD COUNTY COLORADO

VICINITY MAP

SOHIO STATE #1 PAD



DRIVING DIRECTIONS:

- MP 0.0 - Town of Keota, beginning at intersection of WCR 390 & WCR 103, North on WCR 390
- MP 0.9 - Left on WCR 100; West along WCR 100
- MP 4.2 - Left on access to Sohio State #1 Re-Entry Pad; South along access
- MP 4.9 - Right onto Sohio State #1 Re-Entry Pad



1" = 2 MILES
GRID



LAND SURVEYING AND MAPPING
LAFAYETTE - WINTER PARK
Ph 303 666 0379 Fx 303 665 6320

CARRIZO OIL & GAS, INC
SOHIO STATE #1 RE-ENTRY

NE1/4 SW1/4 SEC. 36 T9N R61W
6th PM WELD COUNTY COLORADO