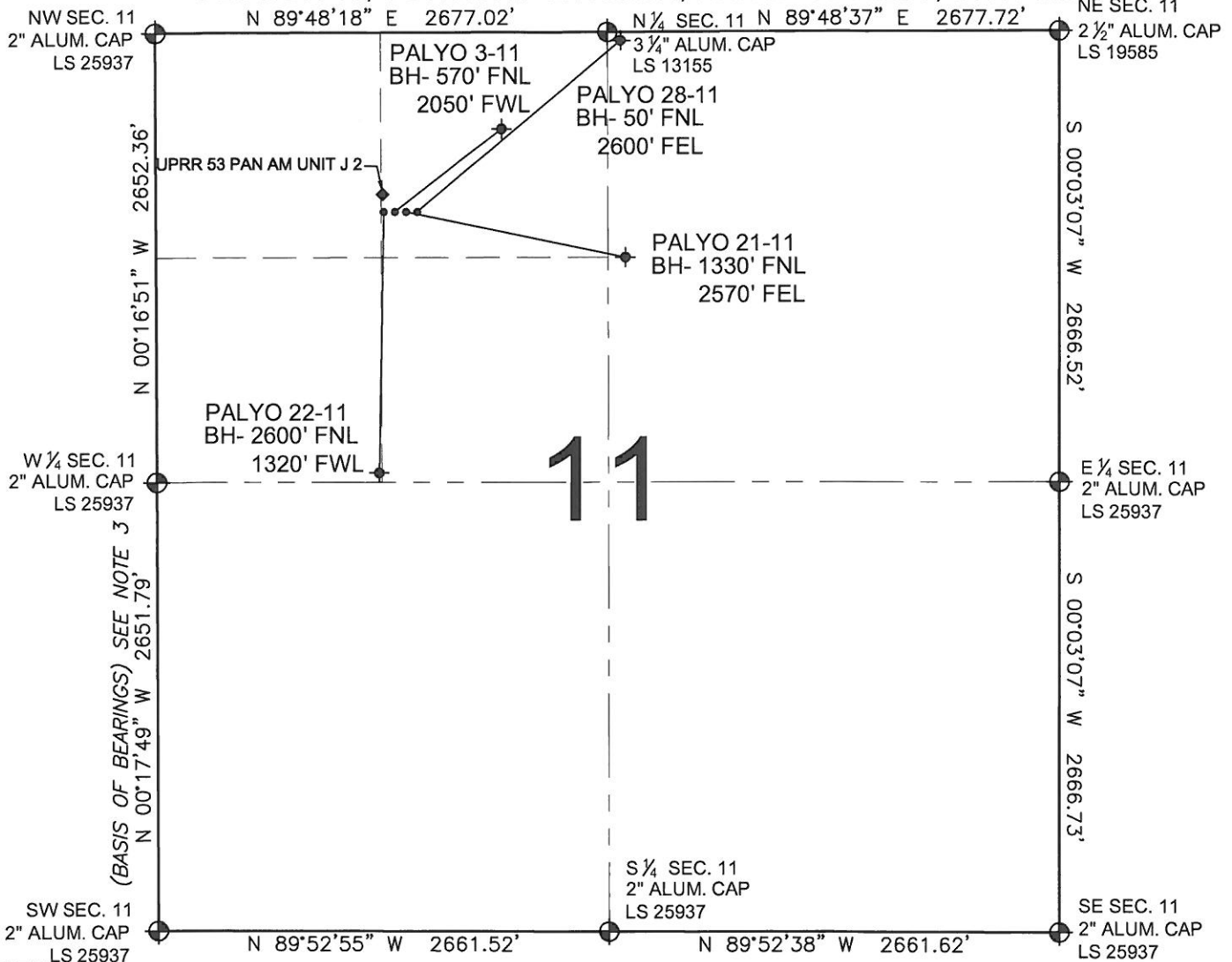


PAD DRAWING - PALYO 4 PAD

SECTION 11, TOWNSHIP 2 NORTH, RANGE 65 WEST, 6TH P.M.



LEGEND

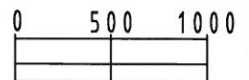
- = EXISTING MONUMENT
 = BOTTOM HOLE
 BH= BOTTOM HOLE
 = PROPOSED WELL
 = EXISTING WELL

NOTES:

- THIS SURVEY WAS DONE BY GPS METHODS AND CONFORMS TO THE MINIMUM STANDARDS SET BY THE C.O.G.C.C., RULE NO. 215 (PDOP VALUE IS LESS THAN 6.0, LATITUDE AND LONGITUDE ARE ACCURATE TO 5 DECIMAL PLACES, AND GPS OBSERVATIONS ARE DIFFERENTIAL AND DONE BY QUALIFIED PERSONNEL.)
- ELEVATIONS SHOWN AT THE WELL HEAD, AS WELL AS HORIZONTAL CONTROL, ARE BASED ON GPS-RTK VALUES DERIVED FROM DOING 2-HOUR STATIC GPS SESSIONS AND REDUCTIONS USING O.P.U.S. SOLUTIONS.
VERTICAL = NAVD88; HORIZONTAL = NAD83/92
- THE BEARINGS SHOWN HEREON ARE BASED ON GPS OBSERVATIONS BETWEEN THE MONUMENTS SHOWN HEREON AS FOUND ON THE FIELD DATE BELOW.
- DISTANCES SHOWN ARE AT GROUND LEVEL, AS MEASURED IN THE FIELD, WITH TIES TO WELLS MEASURED AT A PERPENDICULAR TO SECTION LINES.

NOTES:

PALYO 22-11 TO BE AT 1058' FNL, 1354' FWL.
 BOTTOM HOLE AT 2600' FNL & 1320' FWL.
 PALYO 3-11 TO BE AT 1058' FNL, 1370' FWL.
 BOTTOM HOLE AT 570' FNL & 2050' FWL.
 PALYO 21-11 TO BE AT 1058' FNL, 1385' FWL.
 BOTTOM HOLE AT 1330' FNL & 2570' FEL.
 PALYO 28-11 TO BE AT 1058' FNL, 1401' FEL.
 BOTTOM HOLE AT 50' FNL & 2600' FEL.
 UPRR 53 PAN AM UNIT J 2 IS AT 1011' FNL, 1347' FWL.



SCALE: 1"=1000'

REVISIONS

INITIAL	DATE

PREPARED BY:

PFS

Petroleum Field Services, LLC
1801 W. 13th Ave.
Denver, CO 80204



KERR-MCGEE OIL & GAS ONSHORE LP

FIELD DATE:
07-29-10

DRAWING DATE:
07-30-10

BY:
TJN

PAD NAME:
PALYO 4 PAD

SURFACE LOCATION:

WELD COUNTY, COLORADO
NE 1/4 NW 1/4, SEC. 11, T2N, R65W