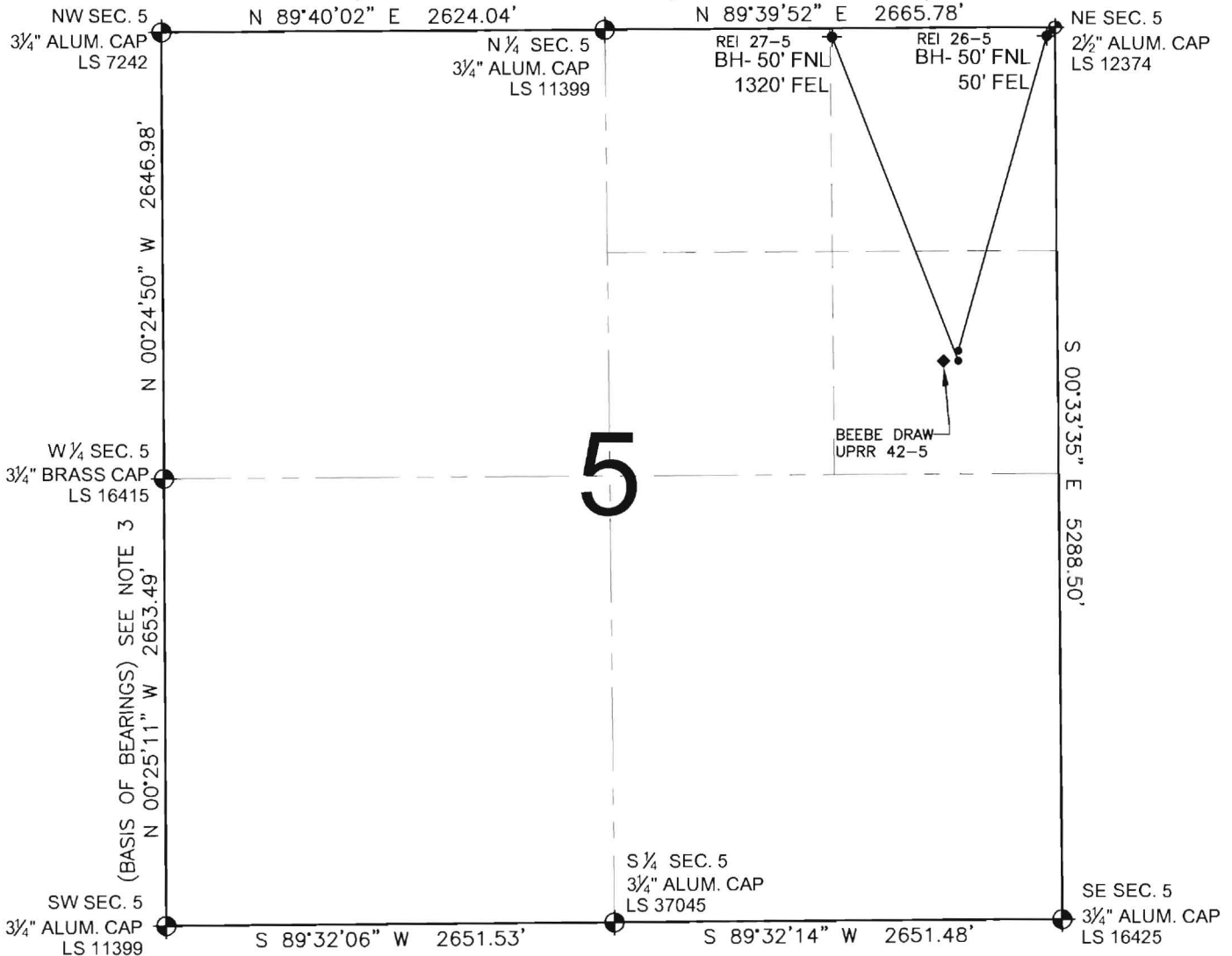


PAD DRAWING - REI 2 PAD

SECTION 5, TOWNSHIP 3 NORTH, RANGE 65 WEST, 6TH P.M.



LEGEND

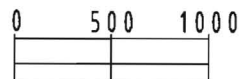
- ⊙ = EXISTING MONUMENT
- ⬢ = BOTTOM HOLE
- BH= BOTTOM HOLE
- = PROPOSED WELL
- ◆ = EXISTING WELL

NOTES:

- THIS SURVEY WAS DONE BY GPS METHODS AND CONFORMS TO THE MINIMUM STANDARDS SET BY THE C.O.G.C.C., RULE NO. 215
- ELEVATIONS SHOWN AT THE WELL HEAD, AS WELL AS HORIZONTAL CONTROL, ARE BASED ON GPS-RTK VALUES DERIVED FROM DOING 2-HOUR STATIC GPS SESSIONS AND REDUCTIONS USING O.P.U.S. SOLUTIONS.
VERTICAL = NAVD88; HORIZONTAL = NAD83/92
- THE BEARINGS SHOWN HEREON ARE BASED ON GPS OBSERVATIONS BETWEEN THE MONUMENTS SHOWN HEREON AS FOUND ON THE FIELD DATE BELOW.
- DISTANCES SHOWN ARE AT GROUND LEVEL. AS MEASURED IN THE FIELD, WITH TIES TO WELLS MEASURED AT A PERPENDICULAR TO SECTION LINES.

NOTES:

- REI 26-5 TO BE AT 1964' FNL, 591' FEL.
BOTTOM HOLE AT 50' FNL & 50' FEL.
REI 27-5 TO BE AT 1974' FNL, 591' FEL.
BOTTOM HOLE AT 50' FNL & 1320' FEL.
BEEBE DRAW UPRR 42-5 IS 1974' FNL, 640' FEL.



SCALE: 1"=1000'

REVISIONS

INITIAL	DATE
SMF	06-23-10

PREPARED BY:



KERR-MCGEE OIL & GAS ONSHORE LP

FIELD DATE:
05-17-10

DRAWING DATE:
05-24-10

BY:
SMF

PAD NAME:
REI 2 PAD

SURFACE LOCATION:

WELD COUNTY, COLORADO
SE 1/4 NE 1/4, SEC. 5, T3N, R65W