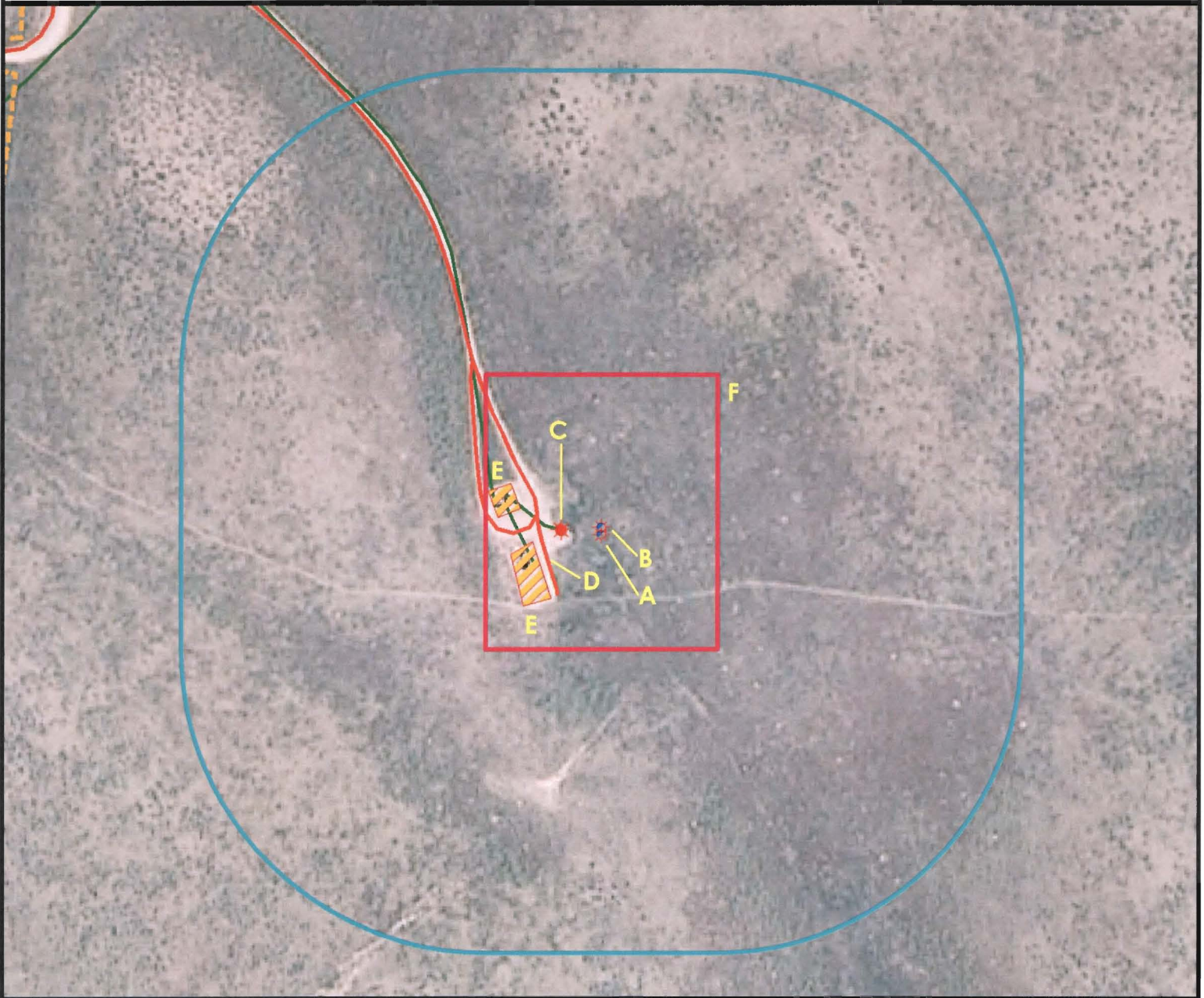


Location Drawing



A. Proposed Well REI 27-5.

E. Facilities are 90' W and 112' NW.

B. Proposed Well REI 26-5.

F. Operational Disturbance Area.

C. Existing Well BEEBE DRAW UPRR 42-5 is 49' W.

D. Existing Access Road is 77' W.



Legend

- | | | | |
|--|----------------------|--|----------------------|
| | Proposed Well | | Building/Residence |
| | Existing Well | | Disturbance Area |
| | Plugged Well | | Water Body |
| | Water Well | | Utility Box |
| | CattleGuard/Gate | | Public Road |
| | Bridge | | Fence |
| | ECD | | Overhead Power Line |
| | 400' Radius | | Underground Pipeline |
| | Facilities Enclosure | | Access Road |
| | | | Ditch/Canal |
| | | | Concrete Ditch |

400ft Radius Map

REI 27-5 Pad Multi Well Pad

Surface Location: T3N R65W S5
Description of surface uses : Open Field

Field Date: 05/17/2010
Drawing Date: 06/23/2010
Drafter: DMM
Checked By: BHF

Aerial Photo supplied by NAIP - 2009

Prepared for:
**KERR-MCGEE OIL &
GAS ONSHORE LP**



Use our resources to find yours!
www.petro-fs.com

1801 W 13th Ave Suite 207
Denver, CO 80204
(303) 928-7128
111 E. Third Street
Rifle, CO 81650
(970) 625-4740