



KINDER MORGAN, INC

GOODMAN POINT #17

**CEMENT SUMMARY
WHIPSTOCK**

The Road to Excellence Starts with Safety

Sold To #: 320986	Ship To #: 2641597	Quote #:	Sales Order #: 5825615
Customer: KINDER MORGAN INC	Customer Rep:		
Well Name: Goodman Point	Well #: 17	API/UWI #: 0508306640	
Field:	City (SAP): UNKNOWN	County/Parish: Montezuma	State: Colorado
Contractor: EXP Drilling Co.	Rig/Platform Name/Num: EXP 12		
Job Purpose: Plug Service - Whipstock			
Well Type: Development Well	Job Type: Plug Service - Whipstock		
Sales Person: SNYDER, RANDALL	Srv Supervisor: PFIEFER, RYAN	MBU ID Emp #: 391069	

Job Personnel

HES Emp Name	Exp Hrs	Emp #	HES Emp Name	Exp Hrs	Emp #	HES Emp Name	Exp Hrs	Emp #
NEWMAN, ORRIN T	4.0	370194	PFIEFER, RYAN J	4.0	391069	WAGON, GLENSON C	4.0	428968
WHIPPLE, JARED	4.0	445505						

Equipment

HES Unit #	Distance-1 way	HES Unit #	Distance-1 way	HES Unit #	Distance-1 way	HES Unit #	Distance-1 way
10243553	125 mile	10251395	125 mile	10713212	125 mile	10948693	125 mile

Job Hours

Date	On Location Hours	Operating Hours	Date	On Location Hours	Operating Hours	Date	On Location Hours	Operating Hours

TOTAL Total is the sum of each column separately

Job				Job Times			
Formation Name				Date	Time	Time Zone	
Formation Depth (MD)	Top	Bottom		Called Out			
Form Type	BHST			On Location			
Job depth MD	8550. ft	Job Depth TVD	8550. ft	Job Started	17 - Apr - 2008	18:06	MST
Water Depth		Wk Ht Above Floor	3. ft	Job Completed	17 - Apr - 2008	18:40	MST
Perforation Depth (MD)	From	To		Departed Loc			

Well Data

Description	New / Used	Max pressure psig	Size in	ID in	Weight lbm/ft	Thread	Grade	Top MD ft	Bottom MD ft	Top TVD ft	Bottom TVD ft
6" Open Hole				6.				8043.	8498.	8043.	8498.
7" Production Pipe	New		7.	6.184	29.		P-110		8043.		8043.
3 1/2" Drill Pipe	Unknown		3.5	2.764	13.3		P-110		8043.		8043.

Tools and Accessories

Type	Size	Qty	Make	Depth	Type	Size	Qty	Make	Depth	Type	Size	Qty	Make
Guide Shoe					Packer					Top Plug			
Float Shoe					Bridge Plug					Bottom Plug			
Float Collar					Retainer					SSR plug set			
Insert Float										Plug Container			
Stage Tool										Centralizers			

Miscellaneous Materials

Gelling Agt	Conc	Surfactant	Conc	Acid Type	Qty	Conc	%
Treatment Fld	Conc	Inhibitor	Conc	Sand Type	Size	Qty	

Fluid Data

Stage/Plug #: 1									
Fluid #	Stage Type	Fluid Name	Qty	Qty uom	Mixing Density lbm/gal	Yield ft ³ /sk	Mix Fluid (Gal/sk)	Rate bbl/min	Total Mix Fluid Gal/sk

Stage/Plug #: 1									
Fluid #	Stage Type	Fluid Name	Qty	Qty uom	Mixing Density lbm/gal	Yield ft ³ /sk	Mix Fluid Gal/sk	Rate bbl/min	Total Mix Fluid Gal/sk
1	Water Ahead		10.00	bbl	.	.0	.0	.0	
2	Cement	CMT - PREMIUM - CLASS G, 94 LB SK (100003685)	150.0	sacks	16.5	1.06	4.24		4.24
	94 lbm	CMT - PREMIUM - CLASS G REG OR TYPE V, BULK (100003685)							
	3 %	POTASSIUM CHLORIDE - KCL, 50 LB BAG (100001585)							
	0.3 %	HR-5, 50 LB SK (100005050)							
	4.24 Gal	FRESH WATER							
3	Water Displacement		56.00	bbl	.			.0	
Calculated Values		Pressures		Volumes					
Displacement		Shut In: Instant		Lost Returns		Cement Slurry		Pad	
Top Of Cement		5 Min		Cement Returns		Actual Displacement		Treatment	
Frac Gradient		15 Min		Spacers		Load and Breakdown		Total Job	
Rates									
Circulating		Mixing		Displacement		Avg. Job			
Cement Left In Pipe		Amount	45 ft	Reason	Shoe Joint				
Frac Ring # 1 @	ID	Frac ring # 2 @	ID	Frac Ring # 3 @	ID	Frac Ring # 4 @	ID		
The Information Stated Herein Is Correct				Customer Representative Signature					

The Road to Excellence Starts with Safety

Sold To #: 320986	Ship To #: 2641597	Quote #:	Sales Order #: 5825615
Customer: KINDER MORGAN INC		Customer Rep:	
Well Name: Goodman Point	Well #: 17	API/UWI #: 0508306640	
Field:	City (SAP): UNKNOWN	County/Parish: Montezuma	State: Colorado
Legal Description:			
Lat: N 0 deg. OR N 0 deg. 0 min. 0 secs.		Long: E 0 deg. OR E 0 deg. 0 min. 0 secs.	
Contractor: EXP Drilling Co.	Rig/Platform Name/Num: EXP 12		
Job Purpose: Plug Service - Whipstock	Ticket Amount:		
Well Type: Development Well	Job Type: Plug Service - Whipstock		
Sales Person: SNYDER, RANDALL	Srv Supervisor: PFIEFER, RYAN	MBU ID Emp #: 391069	

Activity Description	Date/Time	Cht #	Rate bbl/ min	Volume bbl		Pressure psig		Comments
				Stage	Total	Tubing	Casing	
Pre-Convoy Safety Meeting	04/17/2008 13:00							
Depart from Service Center or Other Site	04/17/2008 13:30							
Arrive At Loc	04/17/2008 16:00							
Pre-Rig Up Safety Meeting	04/17/2008 16:05							
Rig-Up Completed	04/17/2008 17:00							
Pre-Job Safety Meeting	04/17/2008 18:00							
Pressure Test	04/17/2008 18:06						4000. 0	
Pump Spacer	04/17/2008 18:08		2	10			1000. 0	FRESH WATER, FULL CIRCULATION
Pump Lead Cement	04/17/2008 18:13		6	28			700.0	CLASS G WITH 3% KCL AND 3/10 HR 5 MIXED AT 16.5# FULL CIRCULATION
Other	04/17/2008 18:18							DROP BALLS
Pump Displacement	04/17/2008 18:23		5.5	56			750.0	FRESH WATER DISPLACEMENT, FULL CIRCULATION, CAUGHT CEMENT WITH 38BBLS AWAY, 10 BBLS LEFT PUMPED AT 2BBLS A MINUTE
Other	04/17/2008 18:36						2300. 0	SHEAR TOOL
Other	04/17/2008 18:40							PULL 5 STANDS
End Job	04/17/2008 19:00							

KINDER MORGAN INC

Goodman Point 17
LEADVILLE
Montezuma County , Colorado

Cement Production Casing

12-Apr-2008

Job Site Documents

HALLIBURTON

7" PROD

Cementing Job Summary

The Road to Excellence Starts with Safety

Sold To #: 320986	Ship To #: 2641597	Quote #:	Sales Order #: 5807961
Customer: KINDER MORGAN INC	Customer Rep:		
Well Name: Goodman Point	Well #: 17	API/UWI #: 0508306640	
Field: LEADVILLE	City (SAP): UNKNOWN	County/Parish: Montezuma	State: Colorado
Contractor: EXP Drilling Co.	Rig/Platform Name/Num: EXP 12		
Job Purpose: Cement Production Casing			
Well Type: Development Well	Job Type: Cement Production Casing		
Sales Person: SNYDER, RANDALL	Srvc Supervisor: DOBBS, GARY	MBU ID Emp #: 122012	

Job Personnel

HES Emp Name	Exp Hrs	Emp #	HES Emp Name	Exp Hrs	Emp #	HES Emp Name	Exp Hrs	Emp #
BERGMAN, JEFFREY James	8.5	392893	DAY, DEWAYNE Santiago	8.5	420305	DOBBS, GARY D	8.5	122012
ETCITY, JERRY	8.5	227876	HANSEN, LEE	8.5	245475	HERR, ROBERT	8.5	324947
RIVERA, FREDDY M.	8.5	122281	THERIAULT, JOE	8.5	178581	TYLER, LUTHER	8.5	375283
VALDEZ, ESTEBAN R	8.5	196320						

Equipment

HES Unit #	Distance-1 way	HES Unit #	Distance-1 way	HES Unit #	Distance-1 way	HES Unit #	Distance-1 way
10025039	125 mile	10025061	125 mile	10243553	125 mile	10248031C	125 mile
10713212	125 mile	10948692	125 mile				

Job Hours

Date	On Location Hours	Operating Hours	Date	On Location Hours	Operating Hours	Date	On Location Hours	Operating Hours
4/12/08	8	3.5	4/13/08	.5	0			

TOTAL Total is the sum of each column separately

Job

Formation Name	Job	Job Times	Date	Time	Time Zone
Formation Depth (MD) Top	Bottom	Called Out			
Form Type	BHST	On Location	12 - Apr - 2008	16:00	MST
Job depth MD	8043. ft	Job Depth TVD	8043. ft	Job Started	12 - Apr - 2008 19:55 MST
Water Depth		Wk Ht Above Floor	15. ft	Job Completed	12 - Apr - 2008 23:27 MST
Perforation Depth (MD) From	To	Departed Loc	13 - Apr - 2008	00:30	MST

Well Data

Description	New / Used	Max pressure psig	Size in	ID in	Weight lbm/ft	Thread	Grade	Top MD ft	Bottom MD ft	Top TVD ft	Bottom TVD ft
8 3/4" Open Hole				8.75				3075.	8043.	3075.	8043.
7" Production Pipe	New		7.	6.184	29.		P-110		8043.		8043.
9 5/8 Surface Casing	New		9.625	8.921	36.		J-55		3075.		3075.

Sales/Rental/3rd Party (HES)

Description	Qty	Qty uom	Depth	Supplier
CENTRALIZER-7"-CSG-8-1/2"-HINGED	78	EA		
CLAMP - LIMIT - 7 - HINGED -	1	EA		
KIT,HALL WELD-A	2	EA		
7" Chrome Float Collar	1	EA		
7" Chrome Float Shoe	1	EA		
PLUG,CMTG,TOP,7,HWE,5.66 MIN/6.54 MAX CS	1	EA		

Cementing Job Summary


Tools and Accessories													
Type	Size	Qty	Make	Depth	Type	Size	Qty	Make	Depth	Type	Size	Qty	Make
Guide Shoe					Packer					Top Plug			
Float Shoe					Bridge Plug					Bottom Plug			
Float Collar					Retainer					SSR plug set			
Insert Float										Plug Container			
Stage Tool										Centralizers			

Miscellaneous Materials									
Gelling Agt	Conc	Surfactant	Conc	Acid Type	Qty	Conc	%		
Treatment Fld	Conc	Inhibitor	Conc	Sand Type	Size	Qty			

Fluid Data									
Stage/Plug #: 1									
Fluid #	Stage Type	Fluid Name	Qty	Qty uom	Mixing Density lbm/gal	Yield ft ³ /sk	Mix Fluid Gal/sk	Rate bbl/min	Total Mix Fluid Gal/sk
1	Water Spacer		10.00	bbl	8.34	.0	.0	.0	
2	MUD FLUSH	MUD FLUSH - ZI - SBM (13383)	20.00	bbl	8.4	.0	.0	.0	
3	Water Spacer		10.00	bbl	8.34	.0	.0	.0	
4	50/50 Poz Standard Foamed Cement	POZ STANDARD 50/50 - SBM (12308)	1800.0	sacks	13.	1.44	6.62		6.79
	0.2 %	VERSASET, 55 LB SK (101376573)							
	0.1 %	HALAD-766, 55 LB SACK (101477695)							
	2 %	ZONESEAL 4000, 55 GAL DRUM (101466487)							
	6.615 Gal	FRESH WATER							
5	50/50 Poz	POZ STANDARD 50/50 - SBM (12308)	300.0	sacks	13.5	1.29	5.73		5.73
	0.2 %	VERSASET, 55 LB SK (101376573)							
	0.1 %	HALAD-766, 55 LB SACK (101477695)							
	5.728 Gal	FRESH WATER							
6	Displacement		292.00	bbl	8.34	.0	.0	.0	
7	Cap Cement	CMT - STANDARD - TYPE II CEMENT (100064006)	100.0	sacks	15.	1.31	6.06		6.06
	94 lbm	CMT - PREMIUM - CLASS G REG OR TYPE V, BULK (100003685)							
	2 %	CALCIUM CHLORIDE - HI TEST PELLET (100005053)							
	6.064 Gal	FRESH WATER							

Calculated Values		Pressures		Volumes			
Displacement	292	Shut In: Instant		Lost Returns		Cement Slurry	531
Top Of Cement	0	5 Min		Cement Returns	300	Actual Displacement	292
Frac Gradient		15 Min		Spacers		Load and Breakdown	

Rates							
Circulating	6	Mixing	6	Displacement	6	Avg. Job	6
Cement Left In Pipe	Amount	45 ft	Reason	Shoe Joint			
Frac Ring # 1 @	ID	Frac ring # 2 @	ID	Frac Ring # 3 @	ID	Frac Ring # 4 @	ID

The Information Stated Herein Is Correct	Customer Representative Signature 
--	---

Cementing Job Log

The Road to Excellence Starts with Safety

Sold To #: 320986	Ship To #: 2641597	Quote #:	Sales Order #: 5807961
Customer: KINDER MORGAN INC		Customer Rep:	
Well Name: Goodman Point		Well #: 17	API/UWI #: 0508306640
Field: LEADVILLE	City (SAP): UNKNOWN	County/Parish: Montezuma	State: Colorado
Legal Description:			
Lat: N 0 deg. OR N 0 deg. 0 min. 0 secs.		Long: E 0 deg. OR E 0 deg. 0 min. 0 secs.	
Contractor: EXP Drilling Co.		Rig/Platform Name/Num: EXP 12	
Job Purpose: Cement Production Casing			Ticket Amount:
Well Type: Development Well		Job Type: Cement Production Casing	
Sales Person: SNYDER, RANDALL		Srv Supervisor: DOBBS, GARY	MBU ID Emp #: 122012

Activity Description	Date/Time	Cht #	Rate bbl/ min	Volume bbl		Pressure psig		Comments
				Stage	Total	Tubing	Casing	
Rig-Down Equipment	04/12/2008 00:00							
Pre-Convoy Safety Meeting	04/12/2008 13:30							
Arrive at Location from Service Center	04/12/2008 16:00							
Pre-Rig Up Safety Meeting	04/12/2008 16:30							
Rig-Up Equipment	04/12/2008 16:45							
Pre-Job Safety Meeting	04/12/2008 19:40							
Start Job	04/12/2008 19:55							
Test Lines	04/12/2008 19:58					5000. 0		
Pump Spacer 1	04/12/2008 20:05		4	10			522.0	WATER
Pump Spacer 2	04/12/2008 20:08		6	20			509.0	MUD FLUSH
Pump Spacer 1	04/12/2008 20:11		6	10			633.0	WATER
Pump Foam Cement	04/12/2008 20:14		6	462			1991. 0	50/50/POZ, .2% VERSASET, .1% HALAD-766, 2% ZONESEAL MIXED @ 13#
Pump Tail Cement	04/12/2008 21:31		6	69			2028. 0	50/50/POZ, .2% VERSASET, .1% HALAD -766 MIXED @ 13.5#
Drop Top Plug	04/12/2008 21:43							
Pump Displacement	04/12/2008 21:46		6	282			2387. 0	WATER

Sold To #: 320986

Ship To #: 2641597

Quote #:

Sales Order #:

5807961

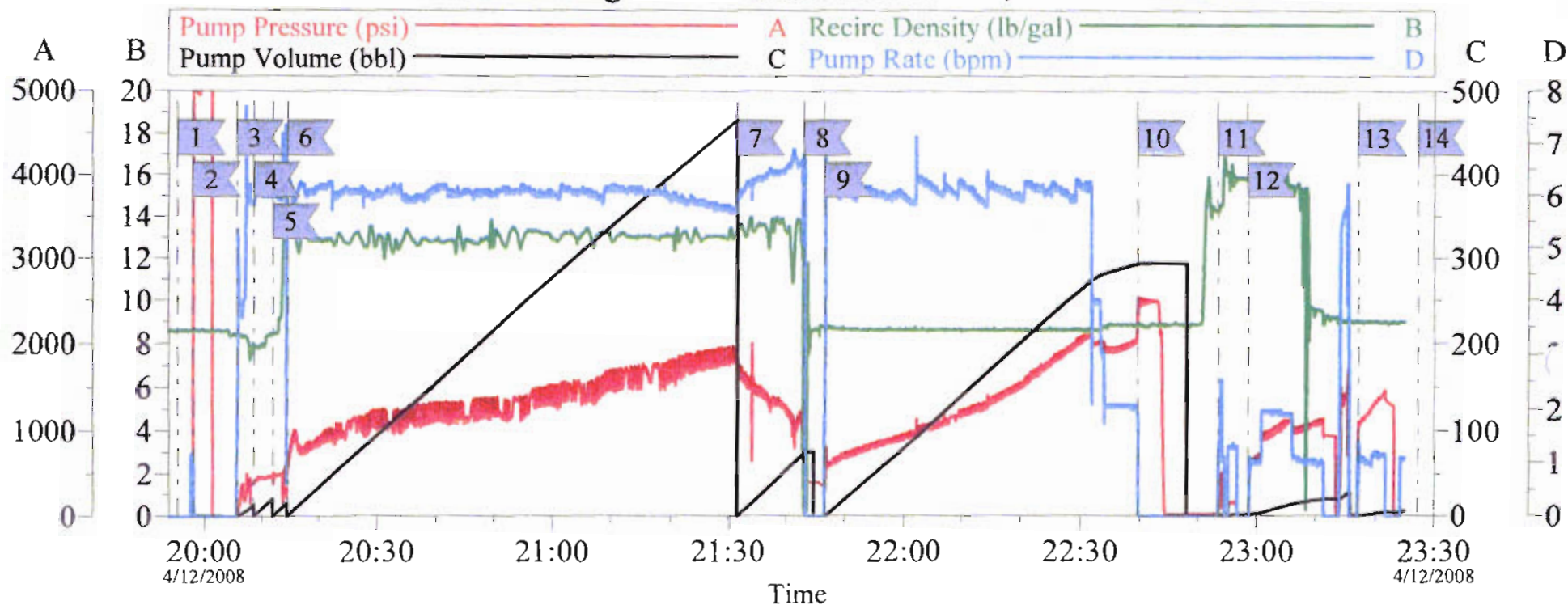
SUMMIT Version: 7.20.130

Sunday, April 13, 2008 12:05:00

Cementing Job Log

Activity Description	Date/Time	Cht #	Rate bbl/ min	Volume bbl		Pressure psig		Comments
				Stage	Total	Tubing	Casing	
Bump Plug	04/12/2008 22:39		2	10	292		2556. 0	WATER
Clean Lines	04/12/2008 22:53							
Pump Cap Cement	04/12/2008 22:58		2	21			1741. 0	STD 2% CACL2 MIXED @ 15.6#
Pump Displacement	04/12/2008 23:17		2	5			1484. 0	WATER
End Job	04/12/2008 23:27							
Post-Job Safety Meeting (Pre Rig-Down)	04/12/2008 23:40							
Cement Returns to Surface	04/12/2008 23:48			300				CIRCULATED 300 BBLS OF CEMENT TO PIT

Kinder Morgan Goodman Point #17, CMT Plot



Local Event Log

Maximum			UDPP	Maximum			UDPP
1	Start Job	19:55:31	296.1	2	Pressure Test	19:58:06	5348
3	Pump Water	20:05:38	522.5	4	Pump Mud Flush	20:08:33	509.6
5	Pump Water	20:11:57	633.8	6	Pump Lead Cement	20:14:33	1991
7	Pump Tail Cement	21:31:31	2028	8	Drop Plug	21:43:06	1074
9	Pump Displacement	21:46:37	2387	10	Bump Plug	22:39:38	2556
11	Wash Up	22:53:28	527.8	12	Pump Cap	22:58:33	1741
13	Pump Water	23:17:02	1484	14	End Job	23:27:11	78.16

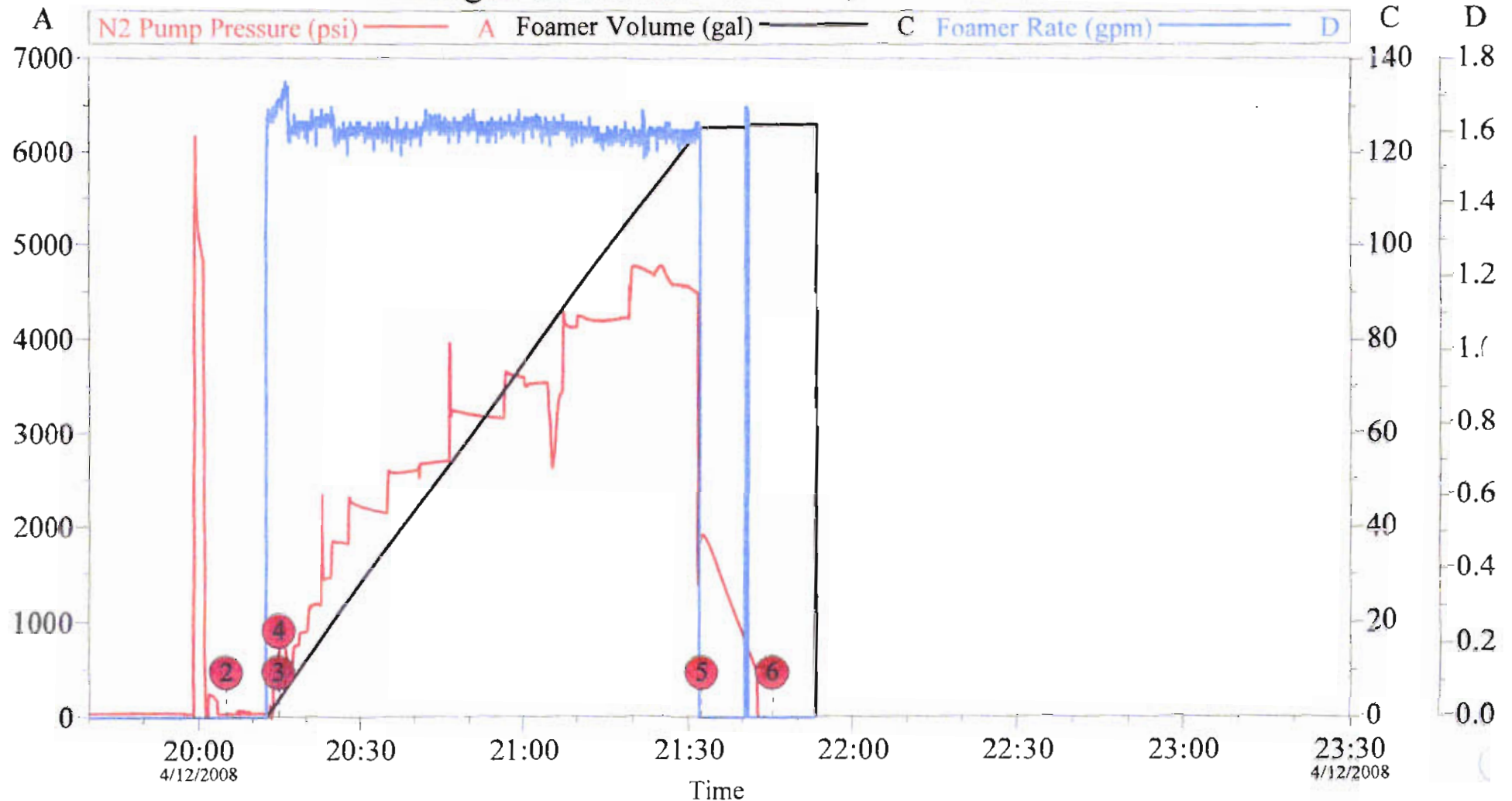
Customer: Kinder Morgan
Well Description: 7" Production

Job Date: 12-Apr-2008

Sales Order #: 5807961

OptiCem v6.2.3
12-Apr-08 23:37

Kinder Morgan Goodman Point #17, N2 & Foamer Plot



Customer:
Well Description:

Job Date: 12-Apr-2008
UWI:

Sales Order #:

OptiCem v6.2.3
12-Apr-08 23:37

KINDER MORGAN, INC

GOODMAN POINT #17

CEMENT SUMMARY

9 5/8" Surface Casing Daily rpt

Drilling Management System

Bit Wt: _____ RPM: _____ Torque _____ ft/lb
 Drag Up: _____ Drag Down: _____ DS Wt: _____

Mud Properties:						Depth		Angle		Dir		Stats	
Time	7:00		Temp:	70 DEG.			3136	1/4DEG			Spud Time:	20:00 HRS.	
Wt. in:	ppg.		FLT:	deg F							Spud Date:	3/24/2008	
Wt. out:	ppg.		Solids:	%							KB Elev:	6766'	
Vis:	Sec.		Oil:	%							KB-CF:	6765'	
PV:	CPS		Sand:	%							KB-GL:	6746'	
YP:	/100 ft2		pH:								BOP Test:		
Gels:			Chl:	ppm							BOP Drlg:		
WL:	cc/30M		Cal:	ppm							Accident:	NAR	
FC:			Bent:	#/bbl							Spills:	NAR	
Other	7-BARACAT 30-FIBERTEX 34-PAPPER 80-AQUAGEL 0-BARA DEFOAM 0-STEEL SEAL 0-LIQUID DRILL 15-WALLNUT												
1- EZ MUD, 6- BARACARB													
Bit No.	Size	Make	Type	Ser No	Jets	In	Out	FTG	Hrs	API Grade			
1	12.25	SMITH	GF37Y	PJ4742	22-22-22	75'	2586'	2511'	83.5	3-3-WT-A-E-I-R.O.P			
2	12.25	VARREL	CH29MRSV	228484	22-22-22	2586'	3164'	578'	18.5	1-1-WT-A-E-I-TD.			
Pump	Make	Model	Stroke	Liner	SPM	Pressure	BPS	BPM	GPS	GPM	@%Eff	Dual Operation	
1	ESMCO	F1000	10	5.5			0.07	8.05	2.94	338.1	0.95%		
2	ESMCO	F1000	10	5.5			0.07	8.05	2.94	338.1	0.95%		
Pipe	Size	Weight	Grade	Type	OD	ID	Total Ft.						
DC	6"	87		4.5 XO	6.25"	2.5"	605.45						
DP	4.5"	16.6	S 135	4.5 XO	4.5	3.83"							
BHA:													

Annular Velocity (ft/min)	DP: _____	DC: _____	Last CSG Size	9 5/8	Set @ 3154'
Nozzle Velocity	Bit Drop: _____	HIS: _____	Next CSG Size	_____	Set @ _____
Well Control:	Kill Rate SPM: _____	psi: _____	Burst: _____	_____	_____

[illegible]

			CIRCULATED 385 SACKS TO SURFACE,	25 SACKS CLASS G FOR TOP OFF JOB
--	--	--	----------------------------------	----------------------------------

Costs

Item									
137401 - Site Preparation	\$	-	Cum.. Item Total	\$	246,937.00	Utely build location / Damage & legals			
137402 - Rig Move In & Out	\$	-		\$	163,361.00	Tri State Trucking/ Dawn Trucking			
137405 - Drilling - Daywork	\$	18,500.00		\$	304,500.00	CDX Rig# 12			
137406 - Rental - Tools & Equip	\$	4,200.00		\$	71,400.00	Houses,Wtr Pump,Pason; Wth Rental BOP,PIPE, choke			
137407 - Bits				\$	30,060.00	HTC / STC			
137408 - Mud & Chemicals	\$	-		\$	17,574.00	Baroid Mud			
137409 - Fuel, Power, & Water	\$	-		\$	48,932.00	Sky Blue/Frailey's DIESEL/PROP.			
137410 - Supervision	\$	-		\$	-				
137411 - Transportation	\$	-		\$	3,140.00	Eddy Trucking, Dir Tools/ Dash/ M&R			
137412 - Mud Logging/MWD	\$	-		\$	-	CWL Mud Loggers			
137413 - Electric & Other Logs	\$	-		\$	-	Weatherford Wireline, Downhole Video			
137414 - Cementing Services	\$	60,877.00		\$	60,877.00	Halliburton (Cmt Surface Csg) Kickoff Plug, Rel Tool			
137415 - Directional Services	\$	-		\$	-	Weatherford Dir			
137416 - Fishing Services	\$	-		\$	-	Wireline specialties- Free Point Unit, Weatherford Fishing			
137419 - Tubular Test & Insp	\$	-		\$	3,972.00	Tuboscope Inspect DC'S			
137423 - Csg & Other Tang Crew	\$	15,401.00		\$	15,401.00	Weatherford AIR & N2 PACKAGE			
137424 - Contract Labor	\$	-		\$	9,534.00	Triad / Utley, Le Pew			
137427 - Prof Serv & Consulting	\$	1,500.00		\$	25,500.00	Kenny kornegay/ Mark Hagelbarger			
137430 - Misc Supplies & Serv	\$	1,420.00		\$	24,360.00	Standby Safety for PP #12 and Patterson #747			
137501 - Cond/Surface Csg	\$	-		\$	-	9 5/8" Csg / 1 - 6-1/4" DRILL COLLAR			
137503 - Other Subsurface Csg	\$	-		\$	-	7" Fox 13 Cr Csg.			
137504 - Wellhead Equipment	\$	-		\$	-	Cameron 11" X 3000# Well Head W/ Valves			
137601 - Site Prep & Cleanup	\$	-		\$	-				
137606 - Completion-Daywork	\$	-		\$	-	BASIC ENERGY			
137607 - Rental Tools & Equip	\$	-		\$	-				
137609 - Mud & Chemicals	\$	1,225.00		\$	21,259.00	R&W TRUCKING			
139612 - Transportation	\$	-		\$	-		DIESEL	REC	0
137622 - Perf, Acidizr & Fract	\$	-		\$	-			ON HAND	4890GAL
137706 - Wellhead Equipment	\$	-		\$	-			USED	547
137707 - Packers & Subsurf Eqp	\$	-		\$	-				
Daily Total	\$	103,123.00		Cumulative Total	\$	1,046,807.00			

MAN HOURS

UTLEY	
COLD BED	
HALLIBURTON	60
STANDBY SAFETY	24
PPD RIG # 12	144
WEATHERFORD	24
R&W TRUCKING	20
HB RENTAL	
CAMERON	
WIRELINE SPECIALTIES	
SMITH BITS & SERVICES	
TRIAD	
PASON	
DASH TRUCKING	
G.B.CONSULTANTS	
TRI STATE TRUCKING	
DAWN TRUCKING	
LE PEW SEPTIC	
HTC, STC & SEC BITS	
TUBOSCOPE	
SKY BLUE WATER	
FRALEY FUEL	
KENNY / MARK	24
Above Enterprice	
HI TECH	
SHAREWELL	
SCIENTIFIC DRILLING	
WILSON SERVICE SL	
NATIONAL OILWELL	
Hot Wheels Trucking	

TOTAL 296