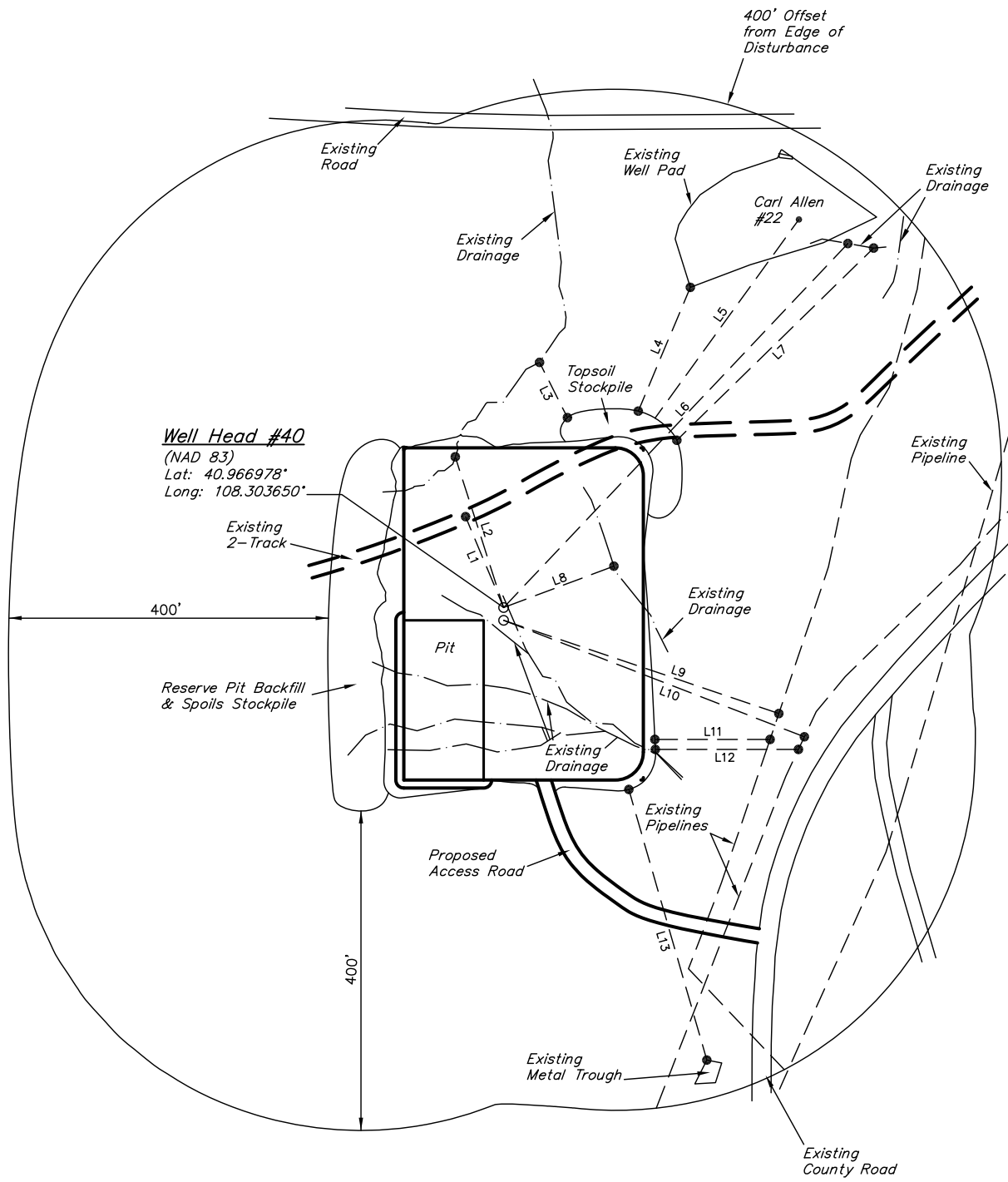




WEXPRO COMPANY
 ADDENDUM TO LEGAL PLAT FOR
 CARL ALLEN #40 & #41
 SECTION 28, T12N, R97W, 6th P.M.
 SW 1/4 SW 1/4

SCALE: 1" = 50'
 DATE: 09-02-10
 DRAWN BY: C.H.
 REVISED: 01-14-11 S.L.



LINE TABLE		
LINE	DIRECTION	LENGTH
L1	S22°41'54"E	123.42'
L2	S17°46'19"E	198.19'
L3	S26°47'33"E	77.57'
L4	S22°50'42"W	168.11'
L5	S35°55'00"W	307.20'
L6	S43°24'42"W	627.50'
L7	S45°40'49"W	344.54'
L8	S69°26'39"W	147.54'
L9	N71°17'24"W	363.98'
L10	N68°49'44"W	403.98'
L11	N89°59'41"W	144.30'
L12	N89°59'41"W	179.20'
L13	N16°04'47"W	352.68'

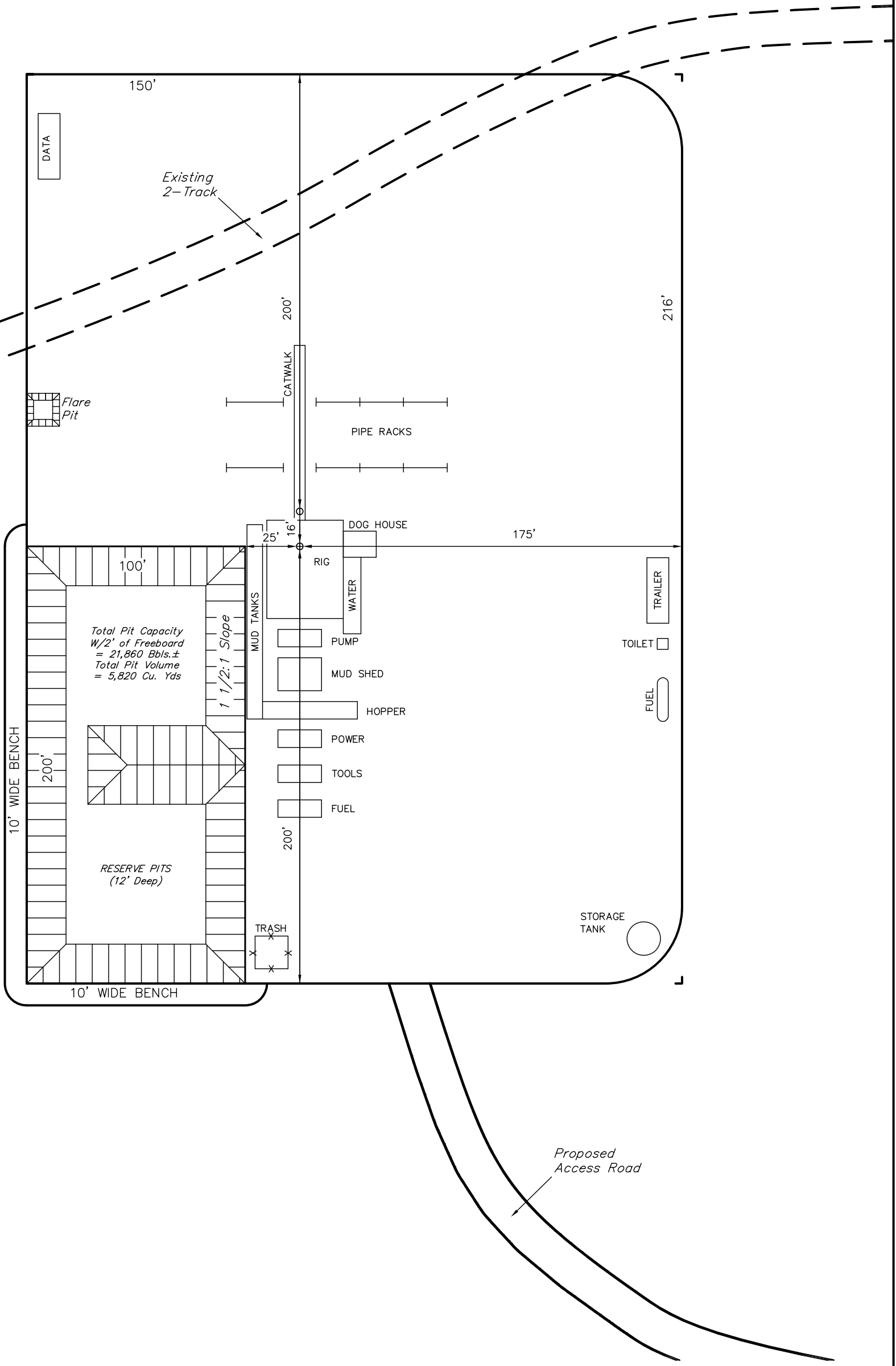
WEXPRO COMPANY
 TYPICAL RIG LAYOUT FOR
 CARL ALLEN #40 & #41
 SECTION 28, T12N, R97W, 6th P.M.
 SW 1/4 SW 1/4

FIGURE #3

SCALE: 1" = 50'
 DATE: 09-02-10
 DRAWN BY: C.H.
 REVISED: 01-14-11 S.L.



NOTE:
 Flare Pit is to be
 located a min. of 100'
 from the Well Head.



Total Pit Capacity
 W/2' of Freeboard
 = 21,860 Bbls.±
 Total Pit Volume
 = 5,820 Cu. Yds

RESERVE PITS
 (12' Deep)