

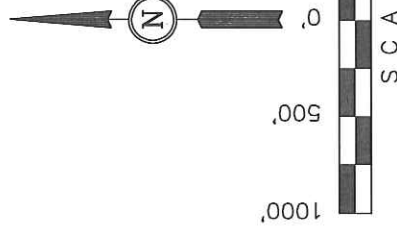
PETROLEUM DEVELOPMENT CORP.

BASIS OF ELEVATION

SPOT ELEVATION AT THE NORTHWEST CORNER OF SECTION 30, T5S, R95W, 6th P.M. TAKEN FROM THE FORKED GULCH QUADRANGLE, COLORADO, GARFIELD COUNTY, 7.5 MINUTE SERIES (TOPOGRAPHICAL MAP) PUBLISHED BY THE UNITED STATES DEPARTMENT OF THE INTERIOR, GEOLOGICAL SURVEY. SAID ELEVATION IS MARKED AS BEING 5966 FEET.

BASIS OF BEARINGS IS A G.P.S. OBSERVATION.

SHEET 1a of 9



THIS IS TO CERTIFY THAT THE ABOVE PLAT WAS PREPARED FROM FIELD NOTES OF ACTUAL SURVEYS MADE BY ME OR UNDER MY SUPERVISION AND THAT THE SAME ARE TRUE AND CORRECT TO THE BEST OF MY KNOWLEDGE AND BELIEF.

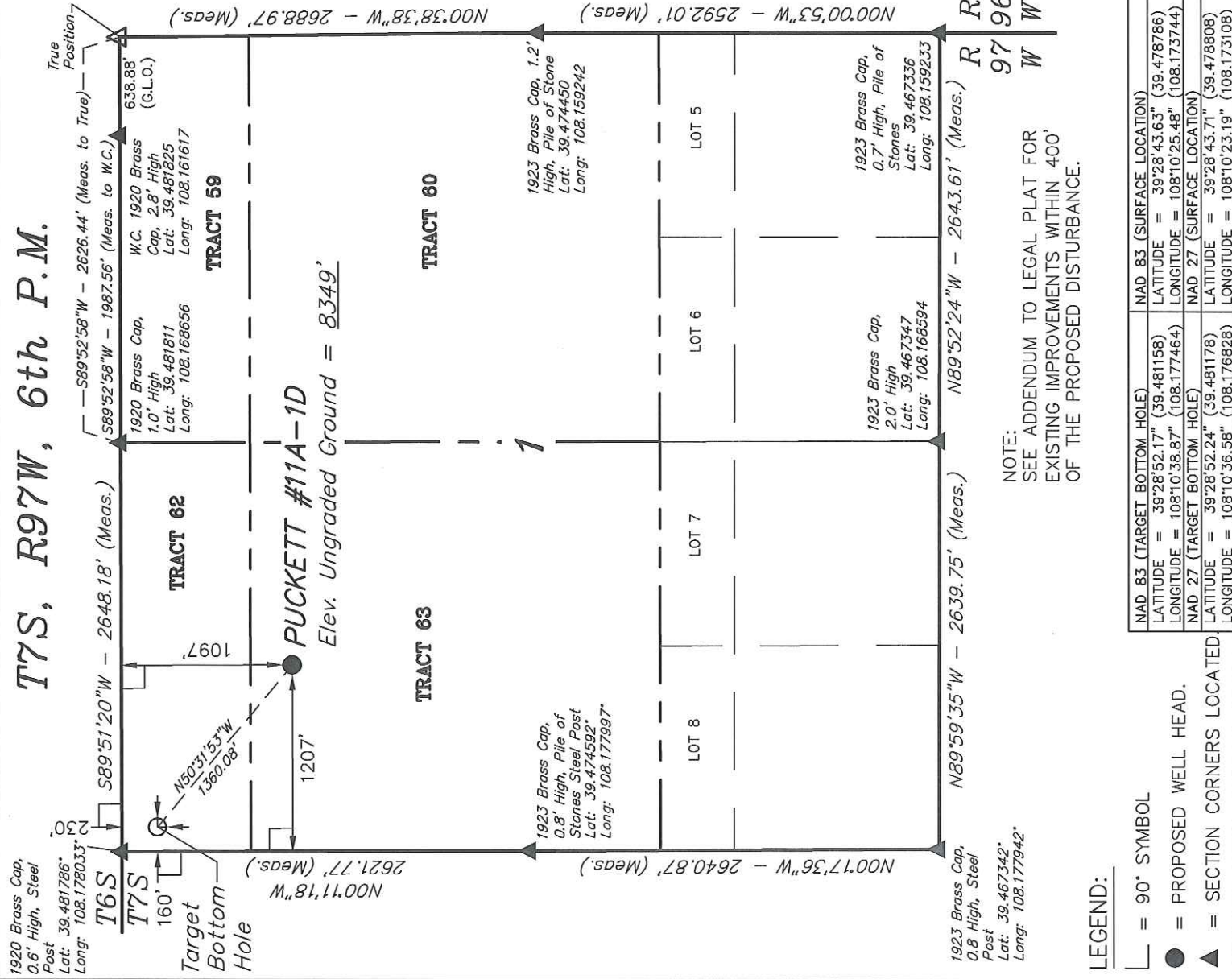
REGISTERED LAND SURVEYOR
REGISTRATION NO. 17492
STATE OF COLORADO

UNTAH ENGINEERING & LAND SURVEYING
85 SOUTH 200 EAST - VERNAL, UTAH 84078
(435) 789-1017

SCALE	DATE SURVEYED:	DATE DRAWN:
1" = 1000'	07-15-10	08-23-10

PARTY	REFERENCES
B.H. N.F.	K.G.
	G.L.O. PLAT

WEATHER	FILE
WARM	PFT



NOTE:
SEE ADDENDUM TO LEGAL PLAT FOR
EXISTING IMPROVEMENTS WITHIN 400'
OF THE PROPOSED DISTURBANCE.

LEGEND:

 $\angle = 90^\circ$ SYMBOL

● = PROPOSED WELL HEAD.

▲ = SECTION CORNERS LOCATED

NAD 83 (TARGET BOTTOM HOLE)	NAD 83 (SURFACE LOCATION)
-----------------------------	---------------------------

NAD 83 (TARGET BOTTOM HOLE)	LATITUDE = 39°28'52.17" (39.481158)	NAD 83 (SURFACE LOCATION)	LATITUDE = 39°28'43.63" (39.478786)
-----------------------------	-------------------------------------	---------------------------	-------------------------------------

NAD 27 (TARGET BOTTOM LOCATION)		NAD 27 (SURFACE LOCATION)	
EPOCH CODE	100 TO 99.07	EPOCH CODE	100 TO 99.10
LATITUDE	30°28'43.04" N	LATITUDE	30°28'43.11" N
LONGITUDE	76°02'50.04" W	LONGITUDE	76°02'50.10" W

LONGITUDE = 108°10'36.58" (108.176828) LONGITUDE = 108°10'23.19" (108.173108)