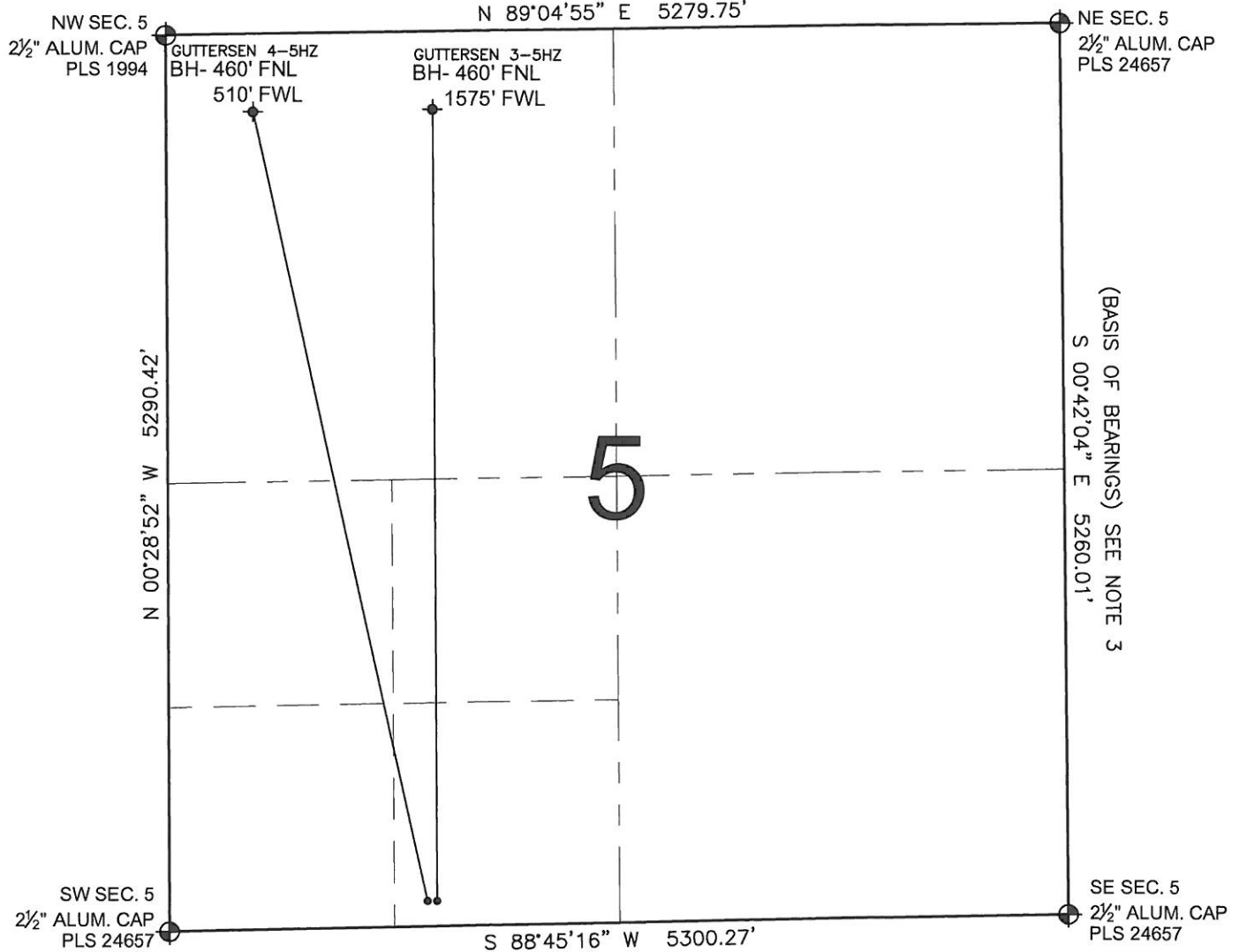


PAD DRAWING - GUTTERSEN 2 PAD

SECTION 5, TOWNSHIP 3 NORTH, RANGE 63 WEST, 6TH P.M.



LEGEND

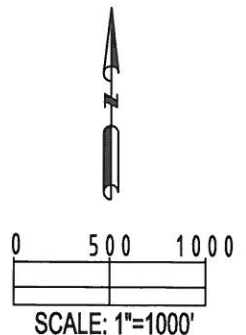
- = EXISTING MONUMENT
 = BOTTOM HOLE
 BH= BOTTOM HOLE
 = PROPOSED WELL
 = EXISTING WELL


NOTES:

- THIS SURVEY WAS DONE BY GPS METHODS AND CONFORMS TO THE MINIMUM STANDARDS SET BY THE C.O.G.C.C., RULE NO. 215
- ELEVATIONS SHOWN AT THE WELL HEAD, AS WELL AS HORIZONTAL CONTROL, ARE BASED ON GPS-RTK VALUES DERIVED FROM DOING 2-HOUR STATIC GPS SESSIONS AND REDUCTIONS USING O.P.U.S. SOLUTIONS.
VERTICAL = NAVD88; HORIZONTAL = NAD83/92
- THE BEARINGS SHOWN HEREON ARE BASED ON GPS OBSERVATIONS BETWEEN THE MONUMENTS SHOWN HEREON AS FOUND ON THE FIELD DATE BELOW.
- DISTANCES SHOWN ARE AT GROUND LEVEL, AS MEASURED IN THE FIELD, WITH TIES TO WELLS MEASURED AT A PERPENDICULAR TO SECTION LINES.

NOTES:

- GUTTERSEN 4-5HZ TO BE AT 150' FSL, 1550' FWL.
 BOTTOM HOLE AT 460' FNL & 510' FWL.
 GUTTERSEN 3-5HZ TO BE AT 150' FSL, 1580' FWL.
 BOTTOM HOLE AT 460' FNL & 1575' FWL.



REVISIONS		PREPARED BY:	
INITIAL	DATE		
SMF	01-06-11	PFS Petroleum Field Services, LLC 1801 W. 13th Ave. Denver, CO 80204	