



Scale 1:240 (5"=100') Imperial

Well Name: Goodman Point #16 Vertical  
Location: SHL: 640 FNL & 632 FWL, Section 33 T37N R17W NMPM  
Licence Number: Region: Colorado  
Spud Date: 02JUL08 Drilling Completed:  
Surface Coordinates: SHL: 640 FNL & 632 FWL, Section 33 T37N R17W NMPM  
Bottom Hole Coordinates: Horizontal Well, 2638 FSL & 627 FWL, Section 33 T37N, R17W 180 deg azimuth  
from SHL (2000' max lateral extension)  
Ground Elevation (ft): 6734 K.B. Elevation (ft): 20  
Logged Interval (ft): 5000 To: Total Depth (ft):  
Formation: Leadville dolomite Limestone  
Type of Drilling Fluid: Fresh Water/BRINE  
Printed by MUD.LOG from WellSight Systems 1-800-447-1534 www.WellSight.com

#### OPERATOR

Company: KINDER MORGAN CO2 Company, L.P.  
Address: 17801 Hwy 491  
Colorado

#### GEOLOGIST

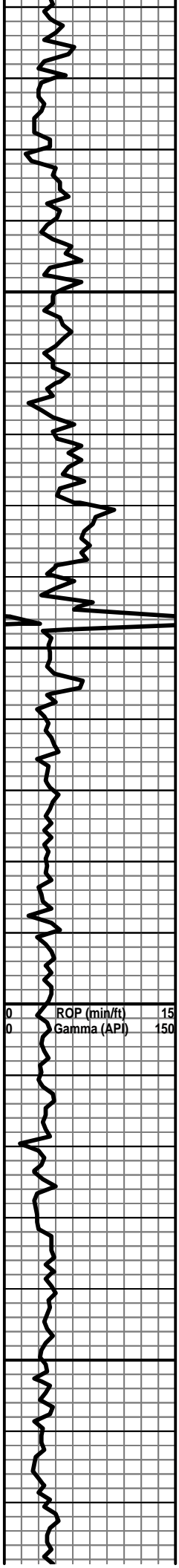
Name: LEON WALTERS & ANNA NEGRETE  
Company: ABOVE ENTERPRISE, A Mud Logging Company  
Address: 510 Old Lubbock Hwy  
Snyder, Texas 79549

#### Cores

#### DSTs

#### Comments



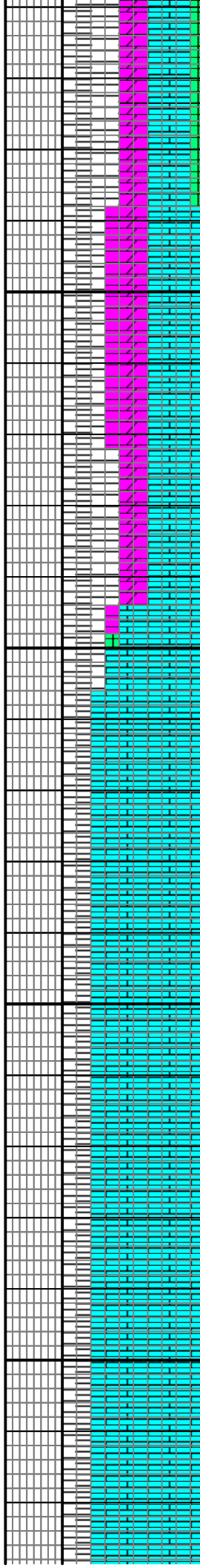


7500

7550

7600

7650



LS/DOL: WH-GY-DKGY-MRLY, FRM, GRNLR-MXLN, SBFISS

LS/DOL: WH-GY-DKGY-MRLY, FRM, GRNLR-MXLN, SBFISS

**6AM 14JUL08 DRGL @ 7545**

LS: WH-OFFWH, SFT SPNGY, LT-GY-GY, FRM-HD, GRNY-XLN-MXLN, SBFISS-MASSIVE, ASSOC: PYR SH: BLK, SILTY, CARB, FISS-LAYRD

LS: WH-OFFWH, SFT SPNGY, LT-GY-GY, FRM-HD, GRNY-XLN-MXLN, SBFISS-MASSIVE, ASSOC: PYR SH: BLK, SILTY, CARB, FISS-LAYRD

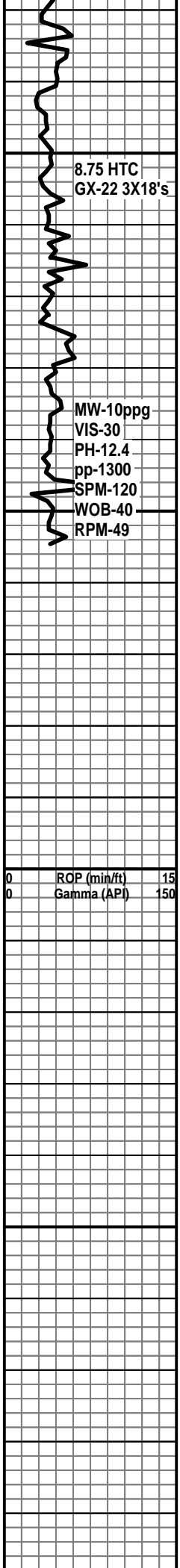
LS: WH-OFFWH, SFT SPNGY, LT-GY-GY, FRM-HD, GRNY-XLN-MXLN, SBFISS-MASSIVE, ASSOC: PYR SH: BLK, SILTY, CARB, FISS-LAYRD

LS: OFFWH-GY-MARLY, FRM-HD, XLN-MXLN, W/GY-BLK SILTY SHALE

LS: OFFWH-GY-MARLY, FRM-HD, XLN-MXLN, W/GY-BLK SILTY SHALE

TRIP GAS FOR  
55min 3400 units  
max and 2800  
units avg

TG (Units)	500
C1 (units)	500
C2 (units)	500
C3 (units)	500
C4 (units)	500
C5 (units)	500



7700

8.75 HTC  
GX-22 3X18's

7750

MW-10ppg  
VIS-30  
PH-12.4  
pp-1300  
SPM-120  
WOB-40  
RPM-49

7800

0	RCP (min/ft)	15
0	Gamma (API)	150

7850

LS:OFFWH-GY-MARLY, FRM-HD,  
XLN-MXLN, W/GY-BLK SILTY SHALE

LS:OFFWH-GY-MARLY, FRM-HD,  
XLN-MXLN, W/GY-BLK SILTY SHALE

**TOP OF LEADVILLE  
7715ft**

LS:PINK-ORNG OFFWH-GY-MARLY,  
FRM-HD, XLN-MXLN,

LS:MUCH MORE PINK-ORNG  
OFFWH-GY-MARLY, FRM-HD,  
XLN-MXLN, W/GY-BLK SILTY SHALE

LS:OFFWH-GY-MARLY, FRM-HD,  
XLN-MXLN, W/GY-GRN-BLK GRAINY  
SHALE. TR: SALT

**6 am 15JUL08 @  
7755'**

0	TG (Units)	500
0	C1 (units)	500
0	C2 (units)	500
0	C3 (units)	500
0	C4 (units)	500
0	C5 (units)	500