

5" = 100'

FEET MD

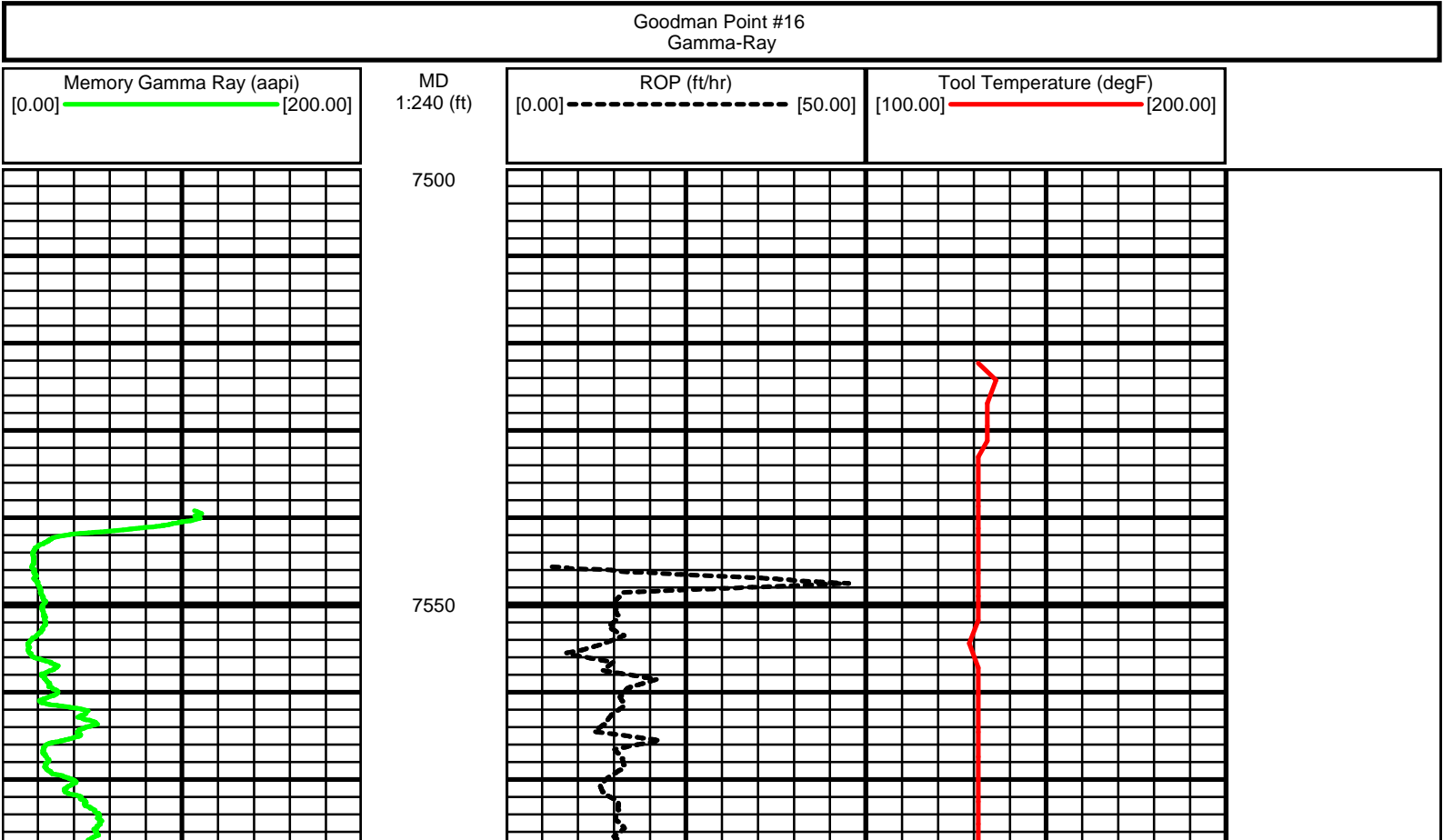
COMPANY : KINDER MORGAN									
WELL : GOODMAN POINT #16									
FIELD : MC ELMO DOME									
COUNTY : MONTEZUMA									
STATE : COLORADO									
COUNTRY : U.S.A.									
API WELL NO. : 0830664900									
WELL LOCATION					OTHER SERVICES				
LAT. 108.73514W									
LONG. 37.42572N									
SEC:33					TWP:37N RANGE:17W				

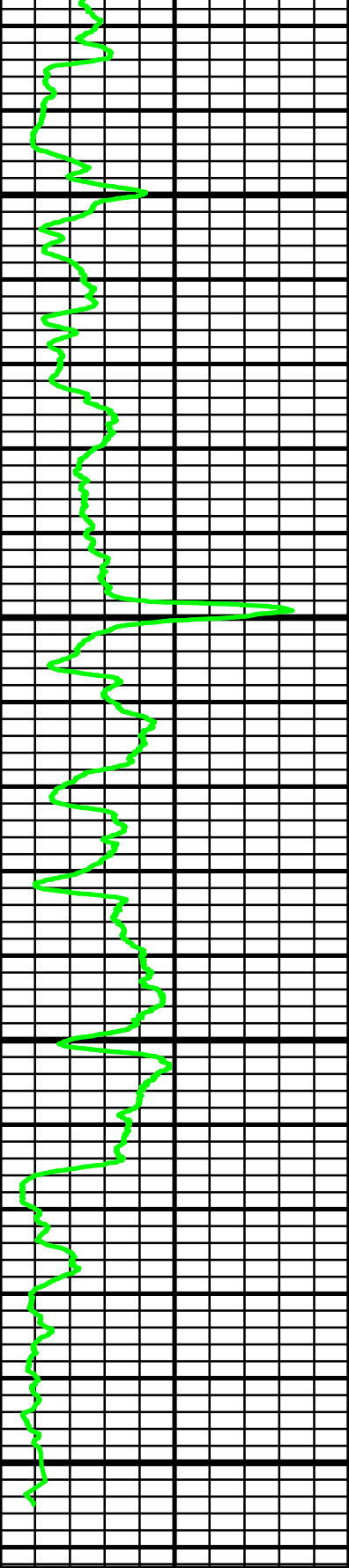
DEPTH REF. : ROTARY TABLE				
ELEVATION : 18 FEET (ROTARY TABLE - GROUND LEVEL)				
ALTITUDE : 6734 FEET (GROUND LEVEL - MEAN SEA LEVEL)				

BOREHOLE RECORD					DEVIATION RECORD				
HOLE SIZE IN	FROM FEET	TO FEET	INCLINATION deg	FROM FEET	TO FEET				
12 1/4	0	3120	0	0	7755				
8 3/4	3120	7755							
CASING RECORD									
CASING SIZE IN	FROM FEET	TO FEET							
9 5/8	0	3120							

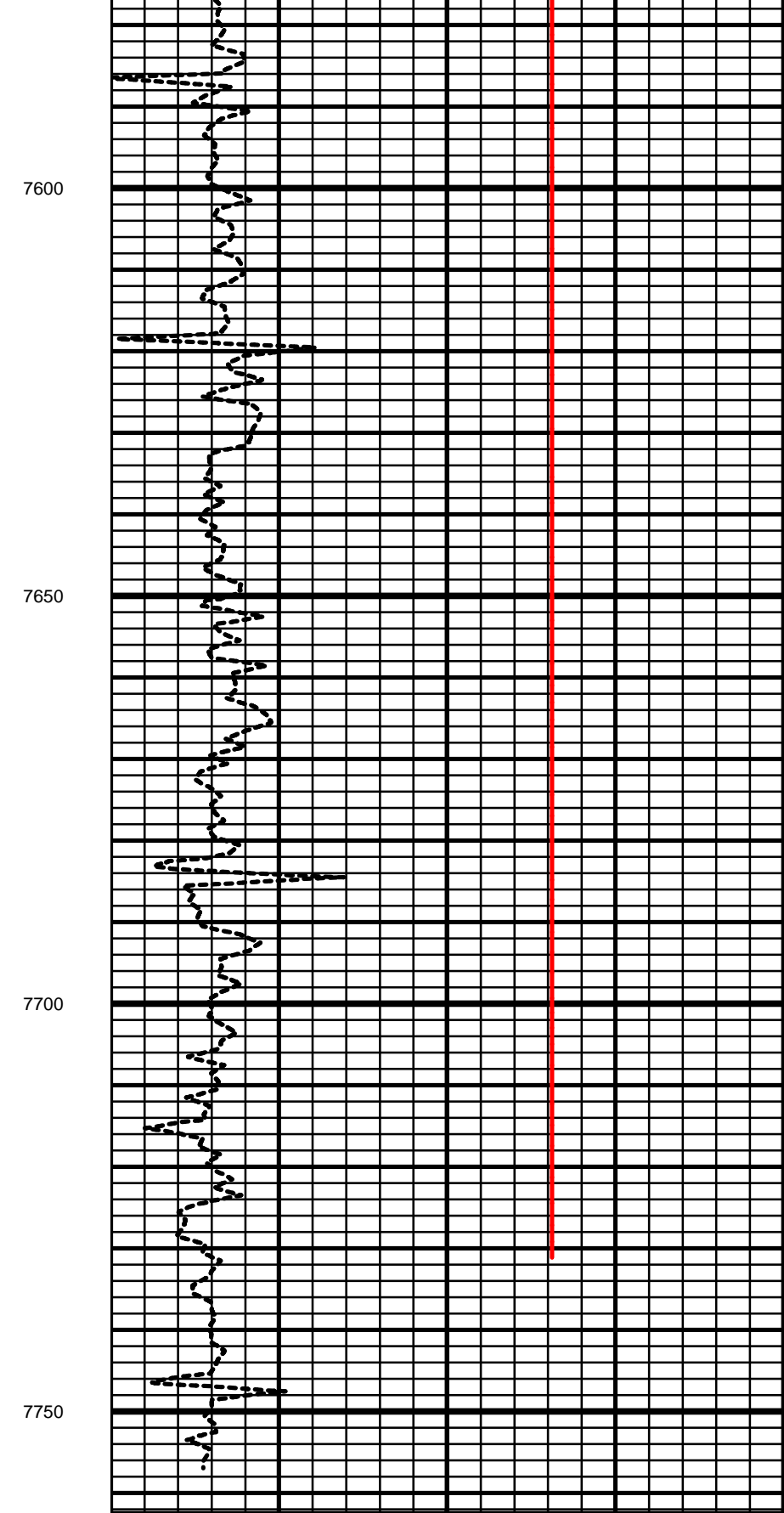
[illegible]

All interpretations are opinions based on inferences from electrical or other measurements and we cannot, and do not guarantee the accuracy or correctness of any interpretations, and we shall not, except in the case of gross or willful negligence on our part, be liable or responsible for any loss, costs, damages or expenses incurred or sustained by anyone resulting from any interpretation made by any of our officers, agents or employees. These interpretations are also subject to our general terms and conditions as set out in our current price schedule.





Memory Gamma Ray (aapi)
[0.00] ————— [200.00]



MD 1:240 (ft)

ROP (ft/hr) [0.00] ————— [50.00]	Tool Temperature (degF) [100.00] ————— [200.00]
-------------------------------------	--

