
KINDER MORGAN INC

Goodman Point 15

Montezuma County , Colorado

Plug Service - Whipstock

27-Aug-2008

Job Site Documents

The Road to Excellence Starts with Safety

The Road to Excellence Starts With Safety			
Sold To #: 320986	Ship To #: 2672522	Quote #:	Sales Order #: 6129570
Customer: KINDER MORGAN INC		Customer Rep: Natenberger, Mark	
Well Name: Goodman Point		Well #: 15	API/UWI #: 050830664100
Field:	City (SAP): CORTEZ	County/Parish: Montezuma	State: Colorado
Contractor: EXP Drilling Co.		Rig/Platform Name/Num: EXP12	
Job Purpose: Plug Service - Whipstock			
Well Type: Development Well		Job Type: Plug Service - Whipstock	
Sales Person: SNYDER, RANDALL		Srv Supervisor: TALLMAN, JESS	MBU ID Emp #: 122519

Job Personnel

HES Emp Name	Exp Hrs	Emp #	HES Emp Name	Exp Hrs	Emp #	HES Emp Name	Exp Hrs	Emp #
CANGIALOSI, NICHOLAS Joseph	20	443898	CLINE, ERIK S	20	447915	TALLMAN, JESS L	20	122519

Equipment

HES Unit #	Distance-1 way	HES Unit #	Distance-1 way	HES Unit #	Distance-1 way	HES Unit #	Distance-1 way
10011274	103 mile	10823383	103 mile	10897849	103 mile	10948691	103 mile

Job Hours

Date	On Location Hours	Operating Hours	Date	On Location Hours	Operating Hours	Date	On Location Hours	Operating Hours
8/26/08	17	0	8/27/08	3	.5			

TOTAL Total is the sum of each column separately

Job				Job Times			
Formation Name	Formation Depth (MD)	Top	Bottom	Called Out	Date	Time	Time Zone
Form Type			BHST	On Location	26 - Aug - 2008	02:00	MST
Job depth MD	8107. ft		Job Depth TVD	Job Started	26 - Aug - 2008	07:00	MST
Water Depth			Wk Ht Above Floor	Job Completed	27 - Aug - 2008	01:25	MST
Perforation Depth (MD)	From		To	Deparred Loc	27 - Aug - 2008	01:52	MST
						03:00	MST

Well Data

Description	New / Used	Max pressure psig	Size In	ID In	Weight lbm/ft	Thread	Grade	Top MD ft	Bottom MD ft	Top TVD ft	Bottom TVD ft
6" Open Hole				6.				7760.	8107.	7760.	8107.
7" Production Pipe	Unknown		7.	6.366	23.		P-110		7760.		7760.
3 1/2" Drill Pipe	Unknown		3.5	2.764	13.3		N-80		7760.		7760.


Tools and Accessories

Type	Size	Qty	Make	Depth	Type	Size	Qty	Make	Depth	Type	Size	Qty	Make
Guide Shoe					Packer					Top Plug			
Float Shoe					Bridge Plug					Bottom Plug			
Float Collar					Retainer					SSR plug set			
Insert Float										Plug Container			
Stage Tool										Centralizers			

Miscellaneous Materials

Gelling Agt	Conc	Surfactant	Conc	Acid Type	Qty	Conc	%
Treatment Fld	Conc	Inhibitor	Conc	Sand Type	Size		

Cementing Job Summary

Fluid Data									
Stage/Plug #: 1									
Fluid #	Stage Type	Fluid Name	Qty	Qty uom	Mixing Density lbm/gal	Yield ft ³ /sk	Mix Fluid Gal/sk	Rate bbl/min	Total Mix Fluid Gal/sk
1	Water Ahead		10.0	bbl	.	.0	.0	.0	
2	Cement	CMT - PREMIUM - CLASS G, 94 LB SK (100003685)	150.0	sacks	16.5	1.06	4.24		4.24
	94 lbm	CMT - PREMIUM - CLASS G REG OR TYPE V, BULK (100003685)							
	3 %	POTASSIUM CHLORIDE - KCL, 50 LB BAG (100001585)							
	0.3 %	HR-5, 50 LB SK (100005050)							
	4.24 Gal	FRESH WATER							
3	Displacement			bbl	.			.0	
Calculated Values		Pressures		Volumes					
Displacement		Shut In: Instant		Lost Returns		Cement Slurry		Pad	
Top Of Cement		5 Min		Cement Returns		Actual Displacement		Treatment	
Frac Gradient		15 Min		Spacers		Load and Breakdown		Total Job	
Rates									
Circulating		Mixing		5		Displacement		8	
Avg. Job								5	
Cement Left In Pipe		Amount 0 ft		Reason		Shoe Joint			
Frac Ring # 1 @		ID		Frac ring # 2 @		ID		Frac Ring # 3 @	
								ID	
								Frac Ring # 4 @	
								ID	
The Information Stated Herein Is Correct				Customer Representative Signature 					

GP-15 8-27-08

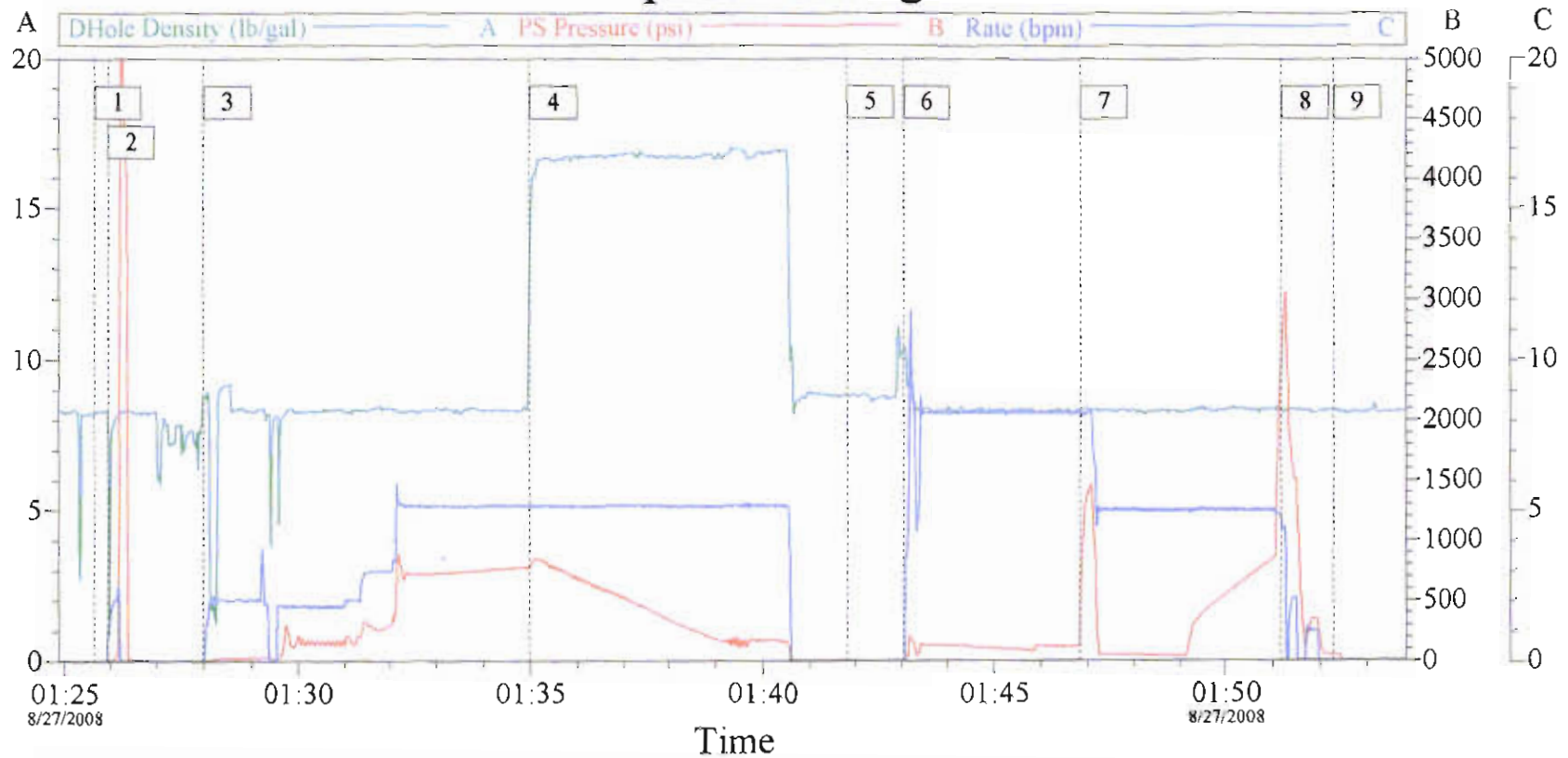
Cementing Job Log

The Road to Excellence Starts with Safety

Sold To #: 320986	Ship To #: 2672522	Quote #:	Sales Order #: 6129570
Customer: KINDER MORGAN INC		Customer Rep: Natenberger, Mark	
Well Name: Goodman Point	Well #: 15	API/UWI #: 050830664100	
Field:	City (SAP): CORTEZ	County/Parish: Montezuma	State: Colorado
Legal Description:			
Lat: N 0 deg. OR N 0 deg. 0 min. 0 secs.		Long: E 0 deg. OR E 0 deg. 0 min. 0 secs.	
Contractor: EXP Drilling Co.		Rig/Platform Name/Num: EXP12	
Job Purpose: Plug Service - Whipstock			Ticket Amount:
Well Type: Development Well		Job Type: Plug Service - Whipstock	
Sales Person: SNYDER, RANDALL	Srvc Supervisor: TALLMAN, JESS		MBU ID Emp #: 122519

Activity Description	Date/Time	Cht #	Rate bbl/ min	Volume bbl		Pressure psig		Comments
				Stage	Total	Tubing	Casing	
Call Out	08/26/2008 02:00							
Safety Meeting - Service Center or other Site	08/26/2008 04:45							
Arrive at Location from Service Center	08/26/2008 07:00							
Safety Meeting - Assessment of Location	08/26/2008 07:10							
Rig-Up Equipment	08/27/2008 00:30							
Safety Meeting - Pre Job	08/27/2008 01:00							
Start Job	08/27/2008 01:25							
Test Lines	08/27/2008 01:25					5000.0		
Pump Spacer 1	08/27/2008 01:27		5	2		700.0		
Pump Cement	08/27/2008 01:34		5	28		850.0		
Drop Ball	08/27/2008 01:41							
Pump Displacement	08/27/2008 01:43		8	10		200.0		
Displ Reached Cmmt	08/27/2008 01:46		8	30		1400.0		
Un-Latch Tool Downhole	08/27/2008 01:51			50		3000.0		shear off fiberglass pipe
End Job	08/27/2008 01:52							pull stands and circulate well

Whipstock Plug



Customer: Kinder Morgan
 Lease Goodman Point

Job Date: 8/27/08
 Well # 15

Ticket #: 6129570
 Supervisor Jess Tallman

CemWin v1.7.2
 27-Aug-08 02:29

The Road to Excellence Starts with Safety

Sold To #: 320986		Ship To #: 2672522		Quote #:		Sales Order #: 6113055							
Customer: KINDER MORGAN INC				Customer Rep: Natenberger, Mark									
Well Name: Goodman Point			Well #: #15		API/UWI #:								
Field: LEADVILLE		City (SAP): CORTEZ		County/Parish: Montezuma		State: Colorado							
Legal Description: Section 32 Township 37N Range 17W													
Contractor: EXP Drilling Co.			Rig/Platform Name/Num: EXP 12										
Job Purpose: Cement Production Casing													
Well Type: Development Well			Job Type: Cement Production Casing										
Sales Person: SNYDER, RANDALL			Srv Supervisor: ETCITY, JERRY			MBU ID Emp #: 227876							
Job Personnel													
HES Emp Name		Exp Hrs	Emp #	HES Emp Name		Exp Hrs	Emp #						
ETCITY, JERRY			227876										
Equipment													
HES Unit #	Distance-1 way	HES Unit #	Distance-1 way	HES Unit #	Distance-1 way	HES Unit #	Distance-1 way						
Job Hours													
Date	On Location Hours	Operating Hours	Date	On Location Hours	Operating Hours	Date	On Location Hours						
TOTAL		Total is the sum of each column separately											
Job				Job Times									
Formation Name				Date	Time	Time Zone							
Formation Depth (MD) Top				Called Out	21 - Aug - 2008	16:00	MST						
Form Type				On Location	21 - Aug - 2008	22:00	MST						
Job depth MD 8020. ft				Job Started	22 - Aug - 2008	11:30	MST						
Water Depth				Job Completed	22 - Aug - 2008	15:06	MST						
Perforation Depth (MD) From				Departed Loc	22 - Aug - 2008	17:00	MST						
Well Data													
Description	New / Used	Max pressure psig	Size in	ID in	Weight lbm/ft	Thread	Grade	Top MD ft	Bottom MD ft	Top TVD ft	Bottom TVD ft		
8 3/4 Open Hole				9.25				2964.	7857.				
7 Production Casing	Unknown		7.	6.184	29.				5815.				
7 Production Casing	Unknown		7.	6.184	29.			7444.	7857.				
7 Production Casing	Unknown		7.	6.094	32.			5815.	7444.				
9 5/8 Surface Casing	Unknown		9.625	8.921	36.				2964.				
Tools and Accessories													
Type	Size	Qty	Make	Depth	Type	Size	Qty	Make	Depth	Type	Size	Qty	Make
Guide Shoe					Packer					Top Plug			
Float Shoe					Bridge Plug					Bottom Plug			
Float Collar					Retainer					SSR plug set			
Insert Float										Plug Container			
Stage Tool										Centralizers			
Miscellaneous Materials													
Gelling Agt		Conc		Surfactant		Conc		Acid Type		Qty		Conc	%
Treatment Fld		Conc		Inhibitor		Conc		Sand Type		Size		Qty	

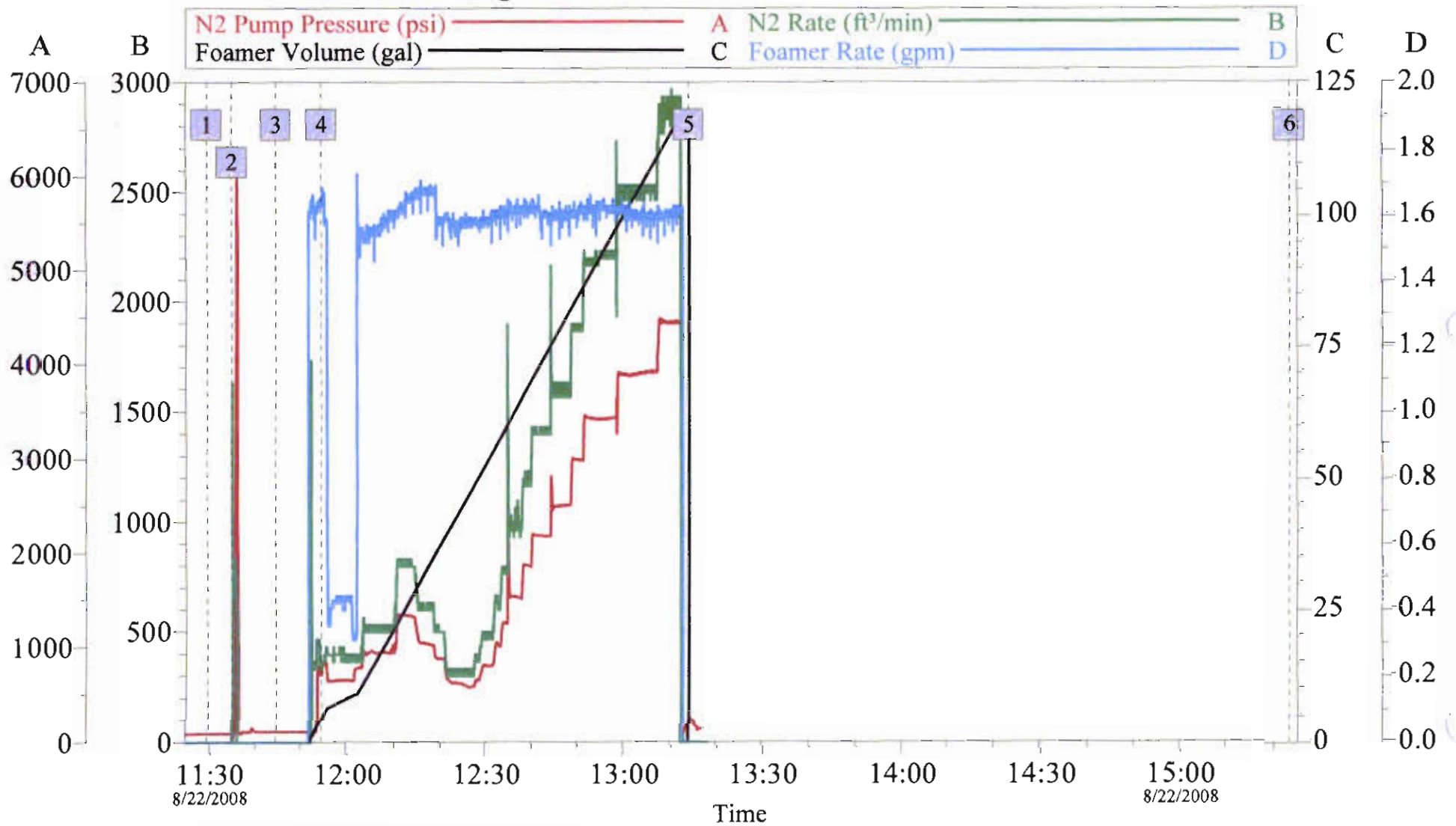
Fluid Data									
Stage/Plug #: 1									
Fluid #	Stage Type	Fluid Name	Qty	Qty uom	Mixing Density lbm/gal	Yield ft ³ /sk	Mix Fluid Gal/sk	Rate bbl/min	Total Mix Fluid Gal/sk
1	Water		10.0	bbl	8.33	.0	.0	.0	
2	CHEMICAL WASH	CHEMICAL WASH - SBM (21914)	20.0	bbl	8.4	.0	.0	.0	
3	Water		10.0	bbl	8.33	.0	.0	.0	
4	Foamed Lead Cement	POZ STANDARD 50/50 - SBM (12308)	1700.0	sacks	13.	1.44	6.76		6.76
	0.2 %	VERSASET, 55 LB SK (101376573)							
	0.1 %	HALAD-766, 55 LB SACK (101477695)							
	1 %	ZONESEAL 4000, TOTETANK (101480799)							
	6.763 Gal	FRESH WATER							
5	Tail Cement	POZ STANDARD 50/50 - SBM (12308)	310.0	sacks	13.5	1.28	5.73		5.73
	0.1 %	HALAD-766, 55 LB SACK (101477695)							
	0.2 %	VERSASET, 55 LB SK (101376573)							
	5.728 Gal	FRESH WATER							
6	Displacement		285	bbl	8.33	.0	.0	.0	
7	Cap Cement	CMT - PREMIUM - CLASS G, 94 LB SK (100003685)	100.0	sacks	15.6	1.2	5.26		5.26
	94 lbm	CMT - PREMIUM - CLASS G REG OR TYPE V, BULK (100003685)							
	2 %	CALCIUM CHLORIDE - HI TEST PELLET (100005053)							
	5.258 Gal	FRESH WATER							
Calculated Values		Pressures		Volumes					
Displacement	285	Shut In: Instant		Lost Returns		Cement Slurry	505	Pad	
Top Of Cement	SURFACE	5 Min		Cement Returns		Actual Displacement	285	Treatment	
Frac Gradient		15 Min		Spacers	40	Load and Breakdown		Total Job	851
Rates									
Circulating	2	Mixing	6	Displacement	6	Avg. Job	6		
Cement Left In Pipe	Amount	45 ft	Reason	Shoe Joint					
Frac Ring # 1 @	ID	Frac ring # 2 @	ID	Frac Ring # 3 @	ID	Frac Ring # 4 @	ID		
The Information Stated Herein Is Correct				Customer Representative Signature					

The Road to Excellence Starts with Safety

Sold To #: 320986	Ship To #: 2672522	Quote #:	Sales Order #: 6113055
Customer: KINDER MORGAN INC		Customer Rep: Natenberger, Mark	
Well Name: Goodman Point		Well #: #15	API/UWI #:
Field: LEADVILLE	City (SAP): CORTEZ	County/Parish: Montezuma	State: Colorado
Legal Description: Section 32 Township 37N Range 17W			
Lat: N 0 deg. OR N 0 deg. 0 min. 0 secs.		Long: E 0 deg. OR E 0 deg. 0 min. 0 secs.	
Contractor: EXP Drilling Co.		Rig/Platform Name/Num: EXP 12	
Job Purpose: Cement Production Casing			Ticket Amount:
Well Type: Development Well		Job Type: Cement Production Casing	
Sales Person: SNYDER, RANDALL	Srvc Supervisor: ETCITY, JERRY	MBU ID Emp #: 227876	

Activity Description	Date/Time	Cht #	Rate bbl/ min	Volume bbl		Pressure psig		Comments
				Stage	Total	Tubing	Casing	
Depart from Service Center or Other Site	08/21/2008 16:00							
Assessment Of Location Safety Meeting	08/21/2008 20:00							
Rig-Up Equipment	08/21/2008 20:30							
Start Job	08/22/2008 11:29							
Test Lines	08/22/2008 11:32							
Pump Spacer 1	08/22/2008 11:44		2	10			389.0	H2O
Pump Spacer 2	08/22/2008 11:47		6	20	30		413.0	CHEM WASH
Pump Spacer 1	08/22/2008 11:51		6	10	40		655.0	H2O
Pump Lead Cement	08/22/2008 11:54		6	436	476		1053.0	1699 SKS. MIXED @ 13 #
Pump Tail Cement	08/22/2008 12:49		6	69	545		1466.0	298 SKS. MIXED @ 13.5 #
Pump Displacement	08/22/2008 13:13		6	285	830		1964.0	H2O
Bump Plug	08/22/2008 14:29		2				4000.0	CHECK FLOATS, FLOATS HELD
Pump Cap Cement	08/22/2008 14:50		2	21	851		736.0	100 SKS. MIXED @ 15.6 #
End Job	08/22/2008 15:06							175 BBLS OF CEMENT TO SURFACE

Kinder Morgan Goodman Point #15, N2 & Foamer Plot



Global Event Log

1	Starting Job	11:29:30	2	Pressure Test	11:34:53	3	Pump Spacer 1	11:44:30
4	Pump Lead Cement	11:54:33	5	Pump Tail Cement	13:13:50	6	Ending Job	15:23:20

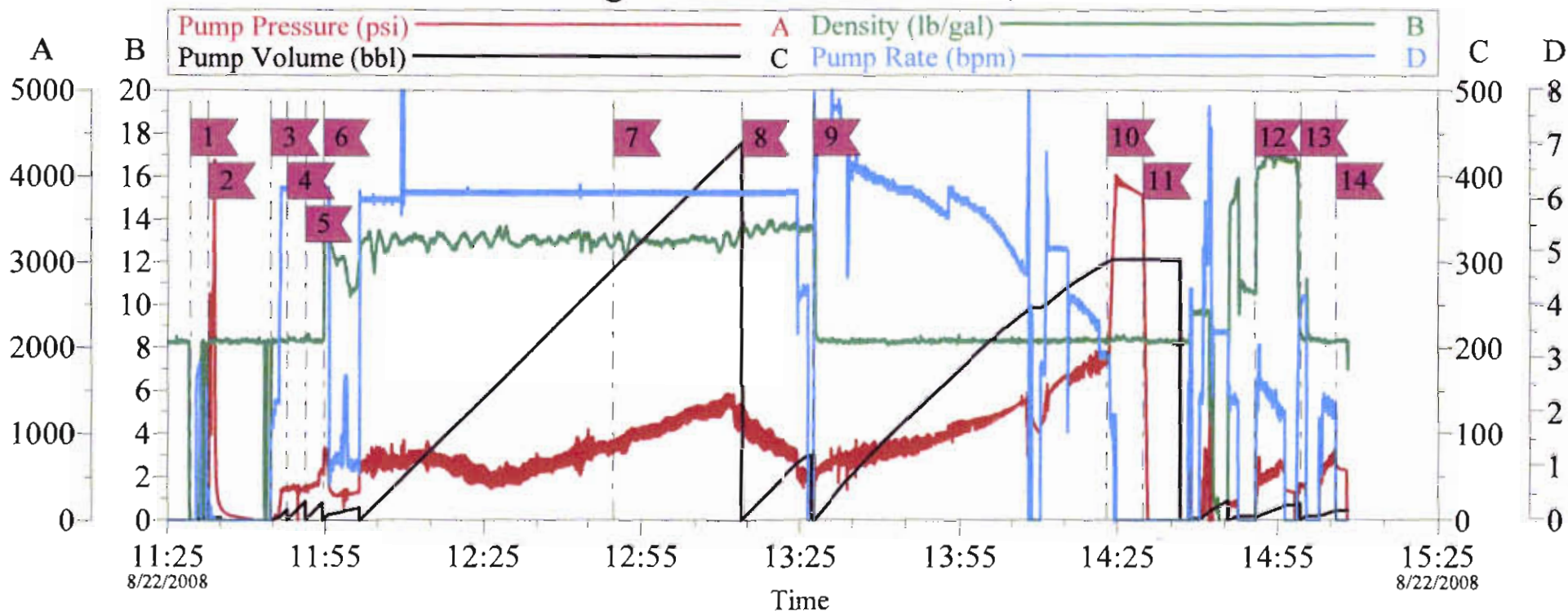
Customer: Kinder Morgan

Job Date: 22-Aug-2008

Sales Order #: 6113055

OptiCem v6.3.4
22-Aug-08 15:31

Kinder Morgan Goodman Point #15, CMT Plot



Local Event Log

Maximum			UPPP	Maximum			UPPP
1	Start Job	11:29:20	302.9	2	Pressure Test	11:32:44	4200
3	Pump Water	11:44:37	389.9	4	Pump Chem Wash	11:47:37	413.3
5	Pump Water	11:51:09	665.0	6	Pump Lead Cement	11:54:33	1053
7	Pump Tail Cement	12:49:41	1466	8	Drop Plug	13:13:49	1337
9	Pump Displacement	13:27:28	1964	10	Bump Plug	14:23:00	4024
11	Check Floats	14:29:43	3723	12	Pump Cap Cement	14:50:38	736.7
13	Pump Water	14:59:21	825.7	14	End Job	15:06:06	657.6

Customer: Kinder Morgan
Well Description: 7" Foam

Job Date: 22-Aug-2008

Sales Order #: 6113055

OptiCem v6.3.4
22-Aug-08 15:25