

HALLIBURTON

DCA

## Cementing Job Summary

The Road to Excellence Starts with Safety

Sold To #: 320986	Ship To #: 2588930	Quote #:	Sales Order #: 5360618
Customer: KINDER MORGAN INC		Customer Rep: Hale, Jimmy	
Well Name: Doe Canyon	Well #: #4	API/UWI #:	
Field:	City (SAP): Cortez, Colo.	County/Parish: Montezuma	State: Colorado
Legal Description: Section 6 Township 40N Range 17W			
Contractor: EXP Drilling Co.	Rig/Platform Name/Num: EXP 12		
Job Purpose: Plug Service - Whipstock			
Well Type: Development well	Job Type: Plug Service - Whipstock		
Sales Person: SNYDER, RANDALL	Srv Supervisor: DOBBS, GARY	MBU ID Emp #: 122012	

## Job Personnel

HES Emp Name	Exp Hrs	Emp #	HES Emp Name	Exp Hrs	Emp #	HES Emp Name	Exp Hrs	Emp #
BRUEGGEMAN, ERIC S	4.0	393018	DAY, DEWAYNE Santiago	4.0	420305	DOBBS, GARY D	4.0	122012

## Equipment

HES Unit #	Distance-1 way	HES Unit #	Distance-1 way	HES Unit #	Distance-1 way	HES Unit #	Distance-1 way
10025039	125 mile	10248031C	125 mile	10804563	125 mile		

## Job Hours

Date	On Location Hours	Operating Hours	Date	On Location Hours	Operating Hours	Date	On Location Hours	Operating Hours
9-14-07	4	1						

TOTAL Total is the sum of each column separately

Job				Job Times			
Formation Name	Formation Depth (MD)	Top	Bottom	Called Out	Date	Time	Time Zone
Form Type			BHST	On Location	14 - Sep - 2007	01:30	MST
Job depth MD	9265. ft		Job Depth TVD	Job Started	14 - Sep - 2007	04:20	MST
Water Depth			Wk Ht Above Floor	Job Completed	14 - Sep - 2007	04:57	MST
Perforation Depth (MD)	From		To	Departed Loc	14 - Sep - 2007	06:30	MST

## Well Data

Description	New / Used	Max pressure psig	Size in	ID in	Weight lbm/ft	Thread	Grade	Top MD ft	Bottom MD ft	Top TVD ft	Bottom TVD ft
7" Production Casing	Used		7.	6.184	29.				5415.		
7" Production Casing	Used		7.	6.094	32.			5415.	8543.		
7" Production Casing	Used		7.	6.184	29.			8543.	8733.		
6" Open Hole				6.				8853.	9300.	8853.	9300.
4 1/2" Drill Pipe	Used		4.5	3.826	16.6		N-80		9200.		9200.

## Tools and Accessories

Type	Size	Qty	Make	Depth	Type	Size	Qty	Make	Depth	Type	Size	Qty	Make
Guide Shoe					Packer					Top Plug			
Float Shoe					Bridge Plug					Bottom Plug			
Float Collar					Retainer					SSR plug set			
Insert Float										Plug Container			
Stage Tool										Centralizers			

## Miscellaneous Materials

Gelling Agt	Treatment Fld	Conc	Conc	Surfactant	Inhibitor	Conc	Conc	Acid Type	Sand Type	Qty	Size	Conc	%

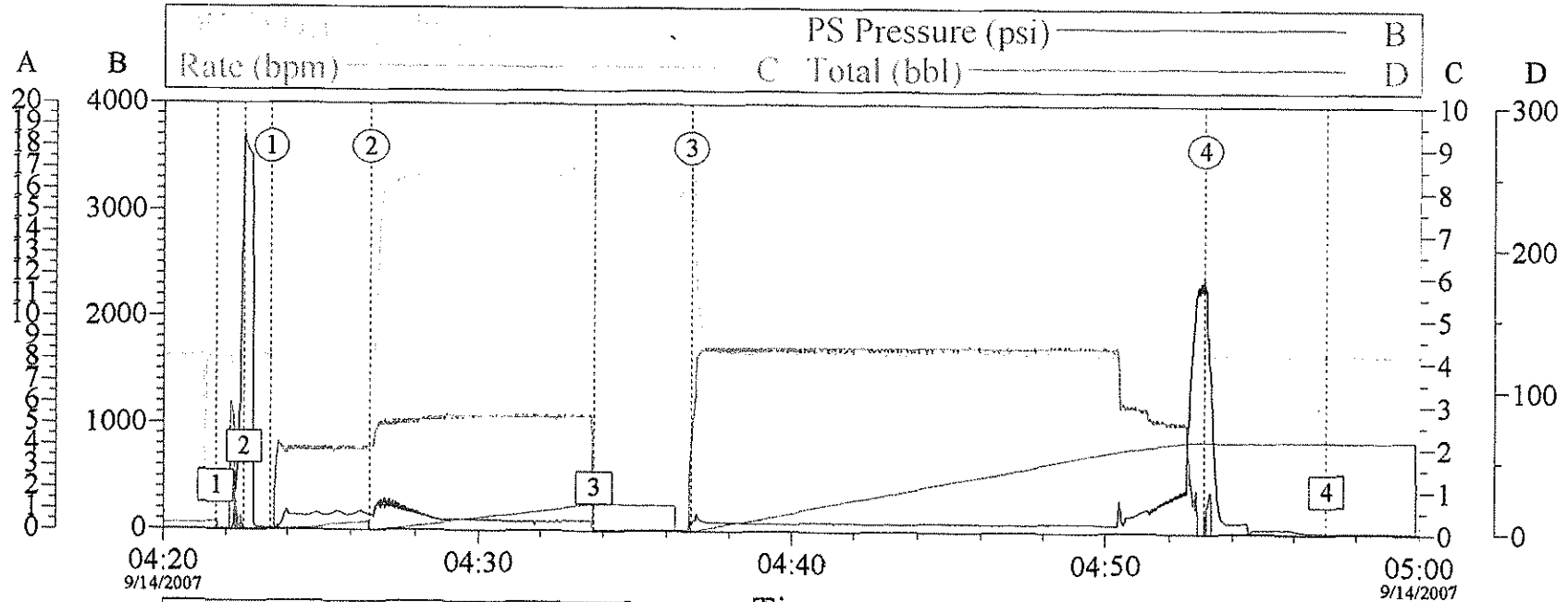
## Fluid Data

Stage/Plug #: 1

# KINDER MORGAN

## WHIP STOCK PLUG

5360618



Stages		
Intersection		PP
① Pump Spacer 1	04:23:26	17.81
② Pump Cement	04:26:35	141.1
③ Pump Displacement	04:36:46	67.82
④ Bump Plug	04:53:07	2353

Event Log		
Intersection		PP
① Start Job	04:21:40	4.109
② Test Line's	04:22:34	3701
③ Drop Top Plug	04:33:42	8.218
④ End Job	04:57:01	12.54

Customer:	Job Date:	Ticket #:
Well Desc:	Job Type:	

CemWin v1.7.2  
14-Sep-07 05:05

The Road to Excellence Starts with Safety

Sold To #: 320986	Ship To #: 2588930	Quote #:	Sales Order #: 5351195
Customer: KINDER MORGAN INC		Customer Rep: Hale, Jimmy	
Well Name: Doe Canyon	Well #: #4	API/UWI #:	
Field:	City (SAP): Cortez, Colo.	County/Parish: Montezuma	State: Colorado
Legal Description: Section 6 Township 40N Range 17W			
Contractor: EXP Drilling Co.		Rig/Platform Name/Num: EXP 12	
Job Purpose: Cement Production Casing			
Well Type: Development Well		Job Type: Cement Production Casing	
Sales Person: SNYDER, RANDALL		Srvc Supervisor: SHOATS, HARRY	MBU ID Emp #: 329013

## Job Personnel

HES Emp Name	Exp Hrs	Emp #	HES Emp Name	Exp Hrs	Emp #	HES Emp Name	Exp Hrs	Emp #
ARCHILETA, DOMINQUEI	24.0	398564	BERGMAN, JEFF	24.0	392893	HARRY, RICARDO D	24.0	316206
JONES, DAVID Michael	24.0	409749	KIDDOO, JUSTIN	24.0	380554	LUNA, MICHAEL	24.0	359228
ORTEGA, JAKE	24.0	159916	PEREZ, DIANA	24.0	413593	SANFORD, DALE A	24.0	219527
SHOATS, HARRY T	24.0	329013	STROMBERG, STEVEN S	24.0	217406			

## Equipment

HES Unit #	Distance-1 way	HES Unit #	Distance-1 way	HES Unit #	Distance-1 way	HES Unit #	Distance-1 way
10025061	125 mile	10025081	125 mile	10026545C	125 mile	10251407C	125 mile
10784053	125 mile	10793626	125 mile	10829446	125 mile	10897805	125 mile
78678	125 mile	D0049	125 mile				

## Job Hours

Date	On Location Hours	Operating Hours	Date	On Location Hours	Operating Hours	Date	On Location Hours	Operating Hours

TOTAL Total is the sum of each column separately

## Job

## Job Times

Formation Name	Formation Depth (MD)	Top	Bottom	Called Out	Date	Time	Time Zone
Form Type	8733. ft	BHST	8733. ft	On Location	10 - Sep - 2007	10:30	MST
Job depth MD	8733. ft	Job Depth TVD	8733. ft	Job Started	10 - Sep - 2007	00:00	MST
Water Depth	Wk Ht Above Floor	6. ft	Job Completed	11 - Sep - 2007	22:25	03:10	MST
Perforation Depth (MD)	From	To	Departed Loc	11 - Sep - 2007	05:30		MST

## Well Data

Description	New / Used	Max pressure psig	Size in	ID in	Weight lbm/ft	Thread	Grade	Top MD ft	Bottom MD ft	Top TVD ft	Bottom TVD ft
9 5/8" Surface Casing	Used		9.625	8.921	36.		K-55		2878.		
8 3/4" Production Open Hole				8.75				2878.	8733.		
7" Production Casing	Used		7.	6.184	29.				5415.		
7" Production Casing	Used		7.	6.094	32.			5415.	8543.		
7" Production Casing	Used		7.	6.184	29.			8543.	8733.		

Sales/Rental/3<sup>rd</sup> Party (HES)

Description	Qty	Qty uom	Depth	Supplier
Chrome Float Shoe SSII-Auto	1	EA		

Description						Qty	Qty uom	Depth	Supplier								
CENTRALIZER-7"-CSG-8-1/2"-HINGED						78	EA										
CLAMP - LIMIT - 7 - HINGED -						1	EA										
KIT,HALL WELD-A						2	EA										
Tools and Accessories																	
Type	Size	Qty	Make	Depth	Type	Size	Qty	Make	Depth	Type	Size	Qty	Make				
Guide Shoe					Packer					Top Plug							
Float Shoe					Bridge Plug					Bottom Plug							
Float Collar					Retainer					SSR plug set							
Insert Float										Plug Container							
Stage Tool										Centralizers							
Miscellaneous Materials																	
Gelling Agt			Conc		Surfactant			Conc		Acid Type			Qty	Conc	%		
Treatment Fld			Conc		Inhibitor			Conc		Sand Type			Size	Qty			
Fluid Data																	
Stage/Plug #: 1																	
Fluid #	Stage Type	Fluid Name				Qty	Qty uom	Mixing Density lbm/gal	Yield ft <sup>3</sup> /sk	Mix Fluid Gal/sk	Rate bbl/min	Total Mix Fluid Gal/sk					
1	Water Spacer					0.00	bbl	8.34	.0	.0	.0						
2	MUD FLUSH	MUD FLUSH - ZI - SBM (13383)				20.00	bbl	8.4	.0	.0	.0						
3	Water Spacer					0.00	bbl	8.34	.0	.0	.0						
4	50/50 Poz Standard Foamed Cement	POZ STANDARD 50/50 - SBM (12308)				1700.0	sacks	12.99	1.44	6.62		6.8					
0.2 %		VERSASET, 55 LB SK (101376573)															
0.1 %		FDP-C766-05, 50 LB BAG (101404805)															
2 %		ZONESEAL 4000, 55 GAL DRUM (101466487)															
6.624 Gal		FRESH WATER															
5	Premium Cement	CMT - PREMIUM - CLASS G, 94 LB SK (100003685)				300.0	sacks	15.6	1.18	5.22		5.22					
94 lbm		CMT - PREMIUM - CLASS G REG OR TYPE V, BULK (100003685)															
0.1 %		HR-5, 50 LB SK (100005050)															
5.22 Gal		FRESH WATER															
6	Displacement					0.00	bbl	8.34	.0	.0	.0						
7	Cap Cement	CMT - STANDARD - TYPE II CEMENT (100064006)					sacks	15.	1.36	6.3		6.3					
94 lbm		CMT - STANDARD - TYPE II, BULK (100064006)															
2 %		CALCIUM CHLORIDE - HI TEST PELLET (100005053)															
5 %		CAL-SEAL 60, 100 LB BAG (100005051)															
6.299 Gal		FRESH WATER															
Calculated Values				Pressures				Volumes									
Displacement		318		Shut In: Instant				Lost Returns				Cement Slurry				Pad	
Top Of Cement		SURF		5 Min				Cement Returns		12 SKS		Actual Displacement		318		Treatment	
Frac Gradient				15 Min				Spacers		40BLL		Load and Breakdown				Total Job	
Rates																	
Circulating		5		Mixing		5		Displacement		6		Avg. Job		5			
Cement Left In Pipe		Amount		0 ft		Reason		Shoe Joint									
Frac Ring # 1 @		ID		Frac ring # 2 @		ID		Frac Ring # 3 @		ID		Frac Ring # 4 @		ID			
The Information Stated Herein Is Correct								Customer Representative Signature									

## The Road to Excellence Starts with Safety

Sold To #: 320986	Ship To #: 2588930	Quote #:	Sales Order #: 5351195
Customer: KINDER MORGAN INC		Customer Rep: Hale, Jimmy	
Well Name: Doe Canyon	Well #: #4	API/UWI #:	
Field:	City (SAP): Cortez, Colo.	County/Parish: Montezuma	State: Colorado
Legal Description: Section 6 Township 40N Range 17W			
Lat:		Long:	
Contractor: EXP Drilling Co.		Rig/Platform Name/Num: EXP 12	
Job Purpose: Cement Production Casing			Ticket Amount:
Well Type: Development Well		Job Type: Cement Production Casing	
Sales Person: SNYDER, RANDALL		Srvc Supervisor: SHOATS, HARRY	MBU ID Emp #: 329013

Activity Description	Date/Time	Cht #	Rate bbl/ min	Volume bbl		Pressure psig		Comments
				Stage	Total	Tubing	Casing	
Pump Cap Cement	09/10/2007 00:00 4:30							
Stop Nitrogen	09/10/2007 00:03							
Pump Tail Cement	09/10/2007 00:03		5	68			1800: 0	
Drop Top Plug	09/10/2007 00:17							
Pump Displacement	09/10/2007 00:18		6	318				
Displ Reached Cmmt	09/10/2007 00:19							
Bump Plug	09/10/2007 01:22						2500. 0	
End Job	09/10/2007 02:38							
Arrive at Location from Service Center	09/10/2007 04:42							
Assessment Of Location Safety Meeting	09/10/2007 04:42							
Rig-Up Equipment	09/10/2007 04:42							
Pre-Job Safety Meeting	09/10/2007 04:42							
Test Lines	09/10/2007 22:27					3500. 0		
Pump Spacer 1	09/10/2007 22:33			10			800.0	
Pump Spacer 2	09/10/2007 22:37		5	20			800.0	
Pump Spacer 1	09/10/2007 22:41		5	10			800.0	
Start Nitrogen	09/10/2007 22:43		5					

HALLIBURTON

*Cementing Job Log*

Activity Description	Date/Time	Cht	Rate bbl/ min	Volume bbl		Pressure psig		Comments
		#		Stage	Total	Tubing	Casing	
Pump Foam Cement	09/10/2007 22:43		5	436				

Sold To # : 320986

Ship To # :2588930

Quote # :

Sales Order # :

5351195

# HALLIBURTON

Doe Canyon #4

7.0" Int

1.4425				Nitrogen			Foamer Rate/ Vol				Stage Time	Cum Time		
Stage #	bbls	Adj bbls	bpm	total bbls	scfm	SCF	scf/bbl	gpm	gal	Base Dens.	Foam Dens.	min	min	
Water	10.0		6.0	10	0	0			0			1.7	1.7	0
Chem Wash	20.0		6.0	20	0	0			0			3.3	5.0	0
Water	10.0		6.0	10	0	0			0			1.7	6.7	0
Lead	31.6	45.6	6.0	46	200	1519	21	1.6	12	13.00	9.50	7.6	14.3	1519
Lead	28.9	41.7	6.0	87	222	1542	37	1.6	23	13.00	9.50	6.9	21.2	3062
Lead	29.9	43.1	6.0	130	342	2458	57	1.6	34	13.00	9.50	7.2	28.4	5520
Lead	17.5	25.2	6.0	156	480	2020	80	1.6	41	13.00	9.50	4.2	32.6	7540
Lead	11.4	16.4	6.0	172	666	1825	111	1.6	45	13.00	9.50	2.7	35.3	9365
Lead	11.3	16.3	6.0	188	876	2380	146	1.6	50	13.00	9.50	2.7	38.1	11745
Lead	11.3	16.3	6.0	205	1086	2950	181	1.6	54	13.00	9.50	2.7	40.8	14695
Lead	31.5	45.5	6.0	250	1344	10191	224	1.6	66	13.00	9.50	7.6	48.4	24887
Lead	35.5	51.2	6.0	301	1590	13570	265	1.6	79	13.00	9.50	8.5	56.9	38457
Lead	39.0	56.3	6.0	358	1884	17665	314	1.6	94	13.00	9.50	9.4	66.3	56122
Lead	41.2	59.4	6.0	417	2202	21811	367	1.6	110	13.00	9.50	9.9	76.2	77933
Lead	43.8	63.2	6.0	480	2514	26473	419	1.6	126	13.00	9.50	10.5	86.7	104406
Lead	46.7	67.4	6.0	548	2856	32066	476	1.6	144	13.00	9.50	11.2	97.9	136472
Lead	57.1	82.4	6.0	630	3240	44478	540	1.6	166	13.00	9.50	13.7	111.7	180950

Tail	68.4		6.0	68	0	0			110	13.50	13.50	11.4	87.6	77933
Displacement	314.8		6.0	315	0	0		0.0	0	8.33	8.33	52.5	140.0	77933
cap	21.0		2.0	21								10.5	150.6	

186.0

Water	6.8
Yield	1.45
Foamer %	1

Lead Cement	436.0 bbl	11560	Mix/Disp H2C	644
	1700 sks		Wash Up	50
Tail Cement	68 bbl	1722-173	Total	694
	300 sks		Ask For	794
ZoneSeal 4000	109.8 gal	27.5 in		
AQF	0.0 gal	0.0 in		
Nitrogen				
Cooldown	17000 SCF			
Job Total	143000 SCF			
Total N2	160000 SCF			

## Chemical Straps

AQF-2	8.62 gal/in
Start	in
End	in
Total	0 gal

## Chemical Straps

Zone Seal	4 gal/in
start	1 in
end	34.5 in
Total	134 gal

---

**KINDER MORGAN INC**

---

**Doe Canyon #4**

**Montezuma County , Colorado**

**Cement Surface Casing**

**Job Site Documents**





## Cementing Job Summary

Customer Representative Signature

*The Road to Excellence Starts with Safety*

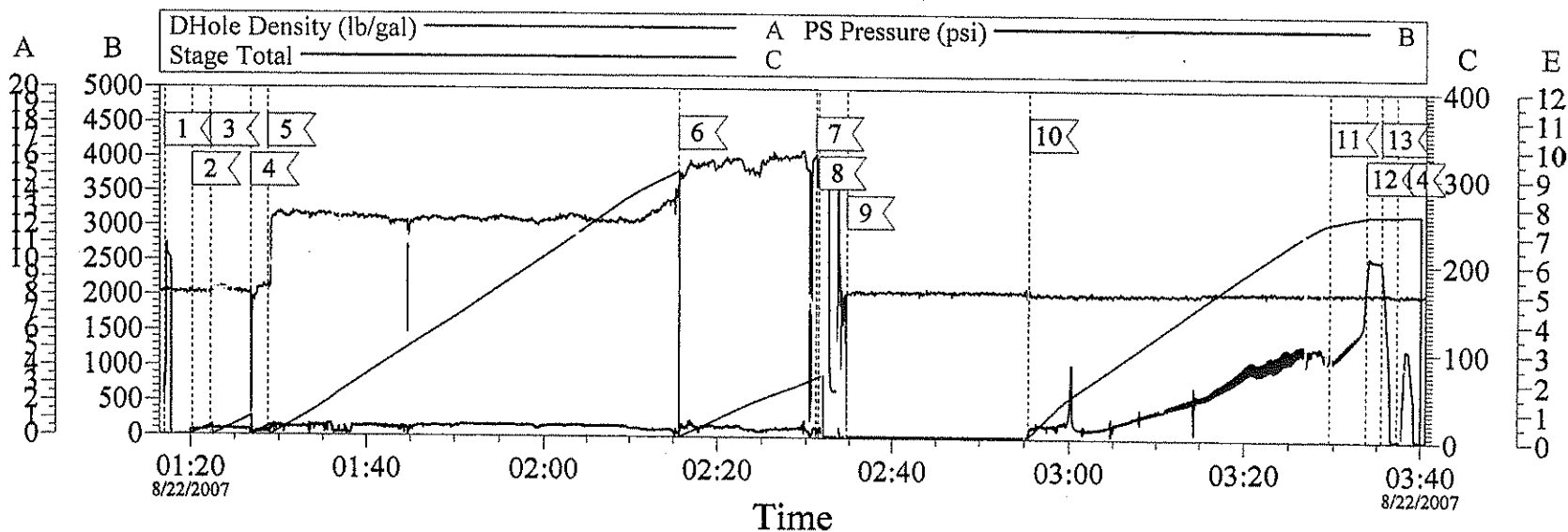
Sold To #: 320986	Ship To #: 2588930	Quote #:	Sales Order #: 5296664
Customer: KINDER MORGAN INC		Customer Rep: Hale, Jimmy	
Well Name: Doe Canyon	Well #: #4	API/UWI #:	
Field:	City (SAP): Cortez, Colo.	County/Parish: Montezuma	State: Colorado
Legal Description: Section 6 Township 40N Range 17W			
Lat:		Long:	
Contractor: EXP Drilling Co.		Rig/Platform Name/Num: EXP 12	
Job Purpose: Cement Surface Casing		Ticket Amount:	
Well Type: Development Well		Job Type: Cement Surface Casing	
Sales Person: SNYDER, RANDALL		Srvs Supervisor: SIMMONS, DERICH	MBU ID Emp #: 295282

Activity Description	Date/Time	Cht #	Rate bbl/min	Volume bbl		Pressure psig		Comments
				Stage	Total	Tubing	Casing	
Pre-Convoy Safety Meeting	08/21/2007 20:00							
Crew Leave Yard	08/21/2007 20:15							
Arrive At Loc	08/21/2007 23:30							
Safety Meeting - Assessment of Location	08/21/2007 23:40							
Rig-Up Completed	08/22/2007 00:00							
Start Job	08/22/2007 00:10							
Test Lines	08/22/2007 01:17							Pressure Test To 2500 psi
Pump Spacer	08/22/2007 01:20		5	10	10		60.0	Fresh Water
Pump Spacer	08/22/2007 01:22		5	20	30		80.0	Mud Flush
Pump Spacer	08/22/2007 01:26		6	10	40		50.0	Fresh Water
Pump Lead Cement	08/22/2007 01:28		6	290	330		180.0	880 sks 1.85 ft3/sk 9.32 gal/sk 12.4 ppg
Pump Tail Cement	08/22/2007 02:15		6	63	393		200.0	300 sks 1.18 ft3/sk 5.2 gal/sk 15.6 ppg
Shutdown	08/22/2007 02:31							
Drop Top Plug	08/22/2007 02:31							
Pump Displacement	08/22/2007 02:31		1	2	395		300.0	
Shutdown	08/22/2007 02:34							Ensure Plug Left Plug Container
Drop Top Plug	08/22/2007 02:55		10		405		230.0	

Activity Description	Date/Time	Cht #	Rate bbl/ min	Volume bbl		Pressure psig		Comments
				Stage	Total	Tubing	Casing	
Cement Returns to Surface	08/22/2007 03:10		7	163	568		1000. 0	
Slow Rate	08/22/2007 03:29		2	230	635		1000. 0	
Bump Plug	08/22/2007 03:33		2	240			2500. 0	
Check Floats	08/22/2007 03:35							
End Job	08/22/2007 03:37							
Pre-Job Safety Meeting	08/22/2007 23:45							
Pre-Rig Up Safety Meeting	08/22/2007 23:50							Circulated 77 bbls(234 sks) to surface

# *Kinder Morgan*

## 9 5/8" Surface



### Event Log

1	Start Job, Test Lines	01:17:05	2	Pump Fresh Water Spacer	01:20:13
3	Pump Mud Flush	01:22:19	4	Pump Fresh Water Spacer	01:26:47
5	Pump Lead Cement	01:28:44	6	Pump Tail Cement	02:15:37
7	Shut Down, Drop Plug	02:31:09	8	Start Displacement	02:31:26
9	Shut Down	02:34:44	10	Resume Displacement	02:55:29
11	Slow Rate	03:29:31	12	Land Plug	03:33:42
13	Bleed Off, Check Float	03:35:29	14	End Job	03:37:16

Customer: Kinder Morgan  
 Well Desc: Doe Canyon #4  
 Co.Rep: Jimmy Hale

Job Date: 21-Aug-2007  
 Job Type: 9/5/8" Surface  
 Halliburton Rep: Derich Simmons

Ticket #: 5296664  
 ADC:yes/no No

CemWin v1.7.2  
 22-Aug-07 04:21

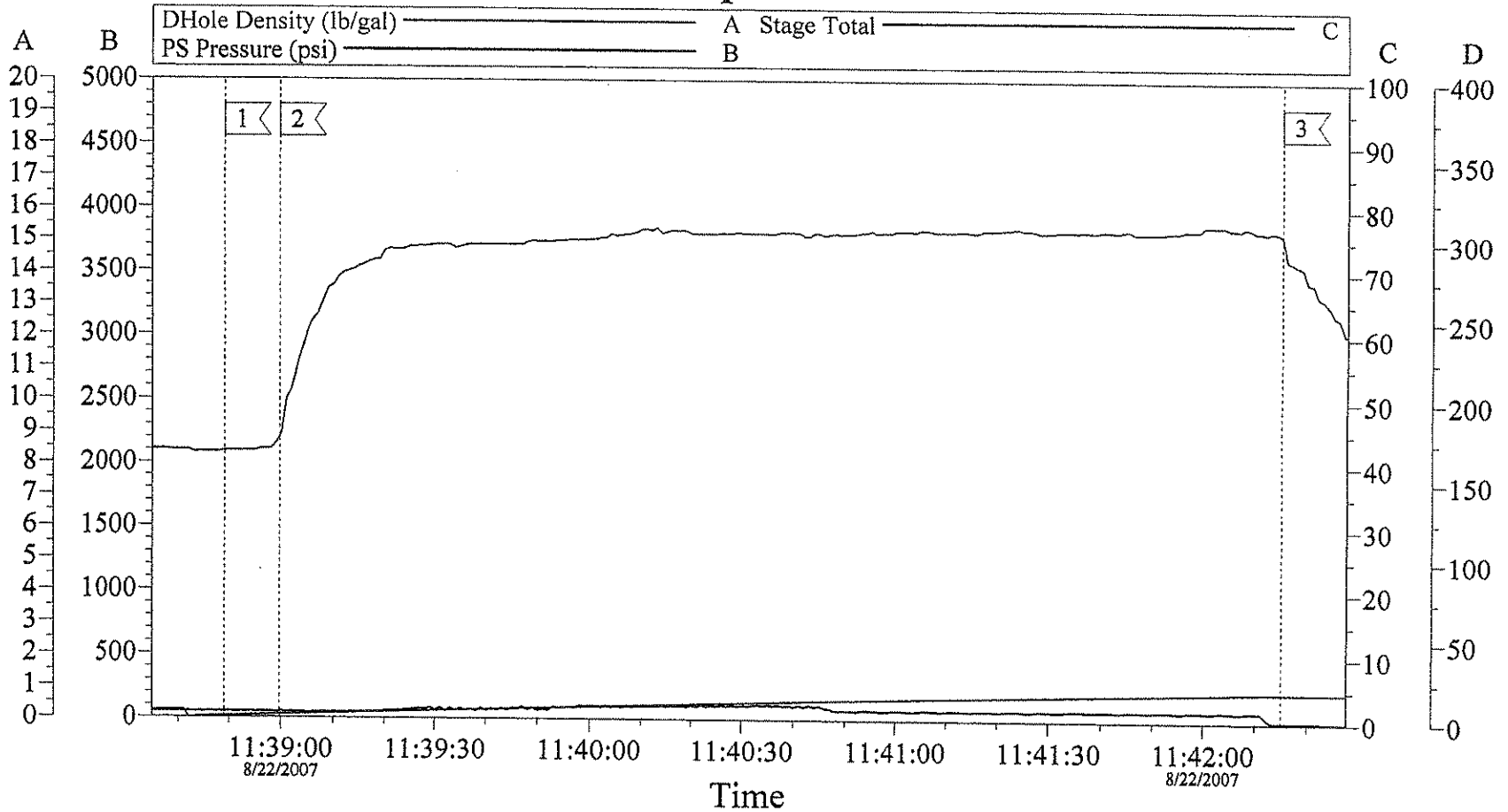
*The Road to Excellence Starts with Safety*

Sold To #: 320986	Ship To #: 2588930	Quote #:	Sales Order #: 5296664
Customer: KINDER MORGAN INC		Customer Rep: Hale, Jimmy	
Well Name: Doe Canyon	Well #: #4	API/UWI #:	
Field:	City (SAP): Cortez, Colo.	County/Parish: Montezuma	State: Colorado
Legal Description: Section 6 Township 40N Range 17W			
Lat:		Long:	
Contractor: EXP Drilling Co.		Rig/Platform Name/Num: EXP 12	
Job Purpose: Cement Surface Casing			Ticket Amount:
Well Type: Development Well		Job Type: Cement Surface Casing	
Sales Person: SNYDER, RANDALL		Srvc Supervisor: SIMMONS, DERICH	MBU ID Emp #: 295282

Activity Description	Date/Time	Cht #	Rate bbl/min	Volume bbl		Pressure psig		Comments
				Stage	Total	Tubing	Casing	
Pre-Convoy Safety Meeting	08/21/2007 20:00							
Crew Leave Yard	08/21/2007 20:15							
Arrive At Loc	08/21/2007 23:30							
Safety Meeting - Assessment of Location	08/21/2007 23:40							
Rig-Up Completed	08/22/2007 00:00							
Start Job	08/22/2007 00:10							
Test Lines	08/22/2007 01:17							Pressure Test To 2500 psi
Pump Spacer	08/22/2007 01:20		5	10	10		60.0	Fresh Water
Pump Spacer	08/22/2007 01:22		5	20	30		80.0	Mud Flush
Pump Spacer	08/22/2007 01:26		6	10	40		50.0	Fresh Water
Pump Lead Cement	08/22/2007 01:28		6	290	330		180.0	880 sks 1.85 ft3/sk 9.32 gal/sk 12.4 ppg
Pump Tail Cement	08/22/2007 02:15		6	63	393		200.0	300 sks 1.18 ft3/sk 5.2 gal/sk 15.6 ppg
Shutdown	08/22/2007 02:31							
Drop Top Plug	08/22/2007 02:31							
Pump Displacement	08/22/2007 02:31		1	2	332		300.0	
Shutdown	08/22/2007 02:34							Ensure Plug Left Plug Container
Drop Top Plug	08/22/2007 02:55		10				230.0	

Activity Description	Date/Time	Cht #	Rate bbl/ min	Volume bbl		Pressure psig		Comments
				Stage	Total	Tubing	Casing	
Cement Returns to Surface	08/22/2007 03:10		7	130	462		1000. 0	
Slow Rate	08/22/2007 03:29		2	230	692		1000. 0	
Bump Plug	08/22/2007 03:33		2	240	932		2500. 0	
Check Floats	08/22/2007 03:35							
End Job	08/22/2007 03:37							
Start Job	08/22/2007 11:19							Start Top Out
Pump Cement	08/22/2007 11:19		1	4	4		10.0	18 sks 1.23 ft3/sk 5.55 gal/sk 15.4 ppg
End Job	08/22/2007 11:20							
Pre-Job Safety Meeting	08/22/2007 23:45							
Pre-Rig Up Safety Meeting	08/22/2007 23:50							

# Top Out



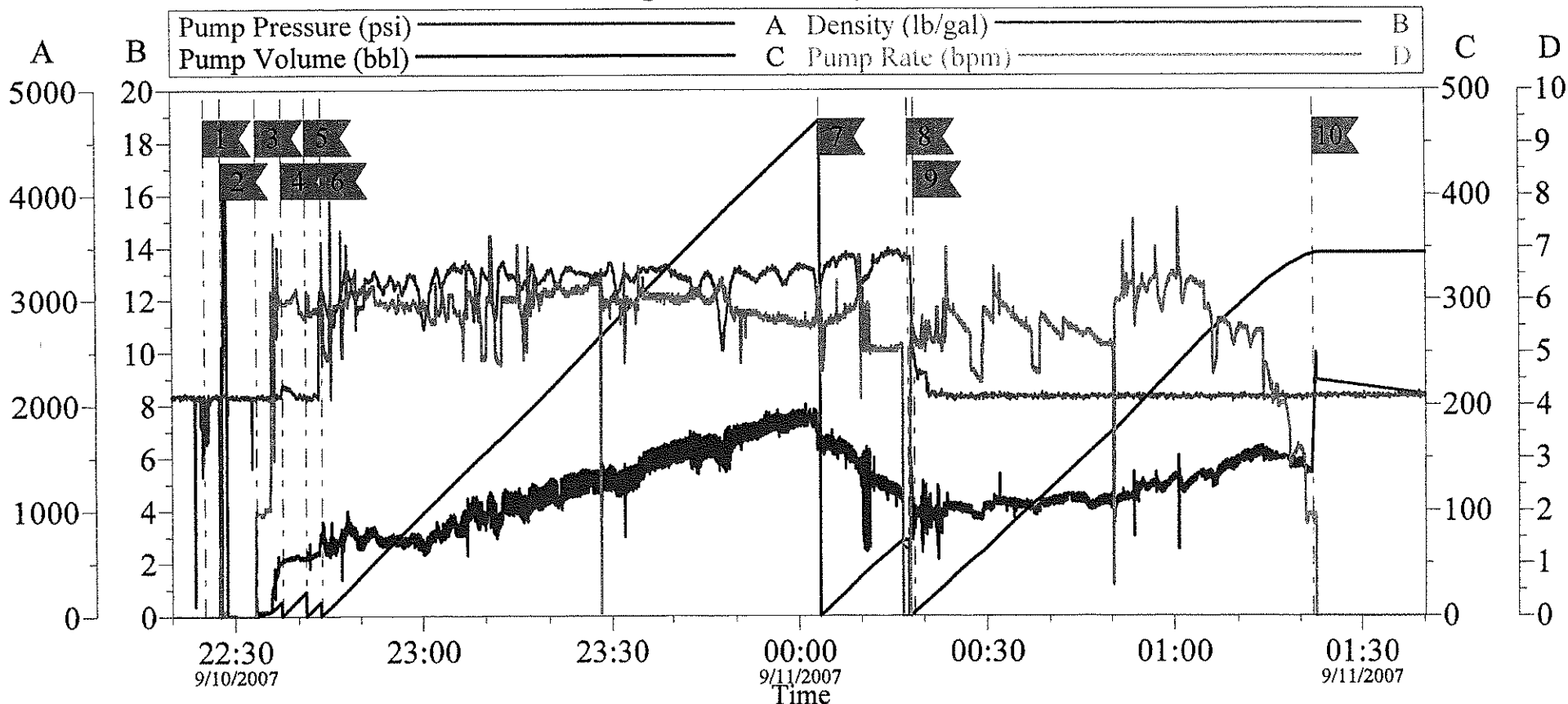
Event Log			
1	Start Job	11:38:49	2
	Pump Cement	11:39:00	3
	End Job	11:42:15	

Customer:	Job Date:	Ticket #:
Well Desc:	UWI:	

CemWin v1.7.2  
 22-Aug-07 12:04



# Kinder Morgan Doe Canyon #4 - Cmt Plot



## Local Event Log

	Maximum	UDPP		Maximum	UDPP
1	Start Job	9/10/2007 22:25:18 70.95	2	Pressure Test	9/10/2007 22:27:59 4142
3	Pump Water	9/10/2007 22:33:30 571.2	4	Pump Mud Flush	9/10/2007 22:37:32 587.7
5	Pump Water	9/10/2007 22:41:15 800.4	6	Pump Lead Cement	9/10/2007 22:43:48 2008
7	Pump Tail Cement	9/11/2007 00:03:20 1763	8	Drop Plug	9/11/2007 00:17:31 1480
9	Pump Displacement	9/11/2007 00:18:34 1619	10	Bump Plug	9/11/2007 01:22:06 2497

Customer: KINDER MORGAN ENERGY PARTNERS LP  
Well Description: Doe Canyon #4

Job Date: 10-Sep-2007  
UWI:

Sales Order #: 5351195

OptiCem v6.1.1  
11-Sep-07 01:52