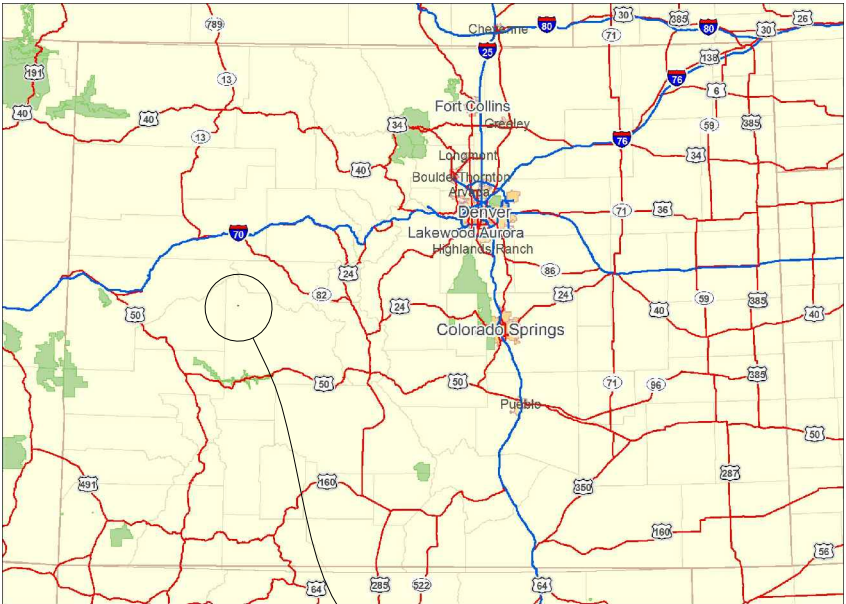


DESIGN PLANS FOR CENTRALIZED E&P
WASTE MANAGEMENT FACILITY APPLICATION

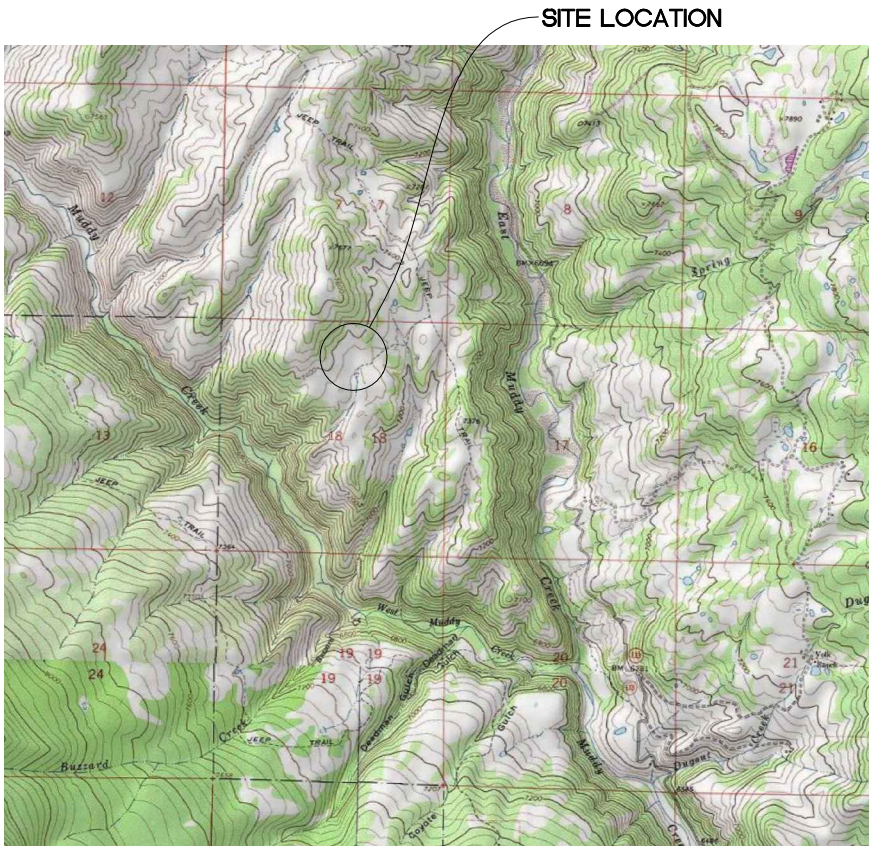
HOTCHKISS WATER
STORAGE FACILITY

GUNNISON COUNTY, COLORADO



SITE LOCATION

SHEET	TITLE
C001	TITLE SHEET AND INDEX
C101	GENERAL SITE PLAN
C102	PIT GRADING PLAN
C103	PIT SECTION A-A
C104	PIT SECTION B-B AND C-C
C105	DETAILS
C106	PIPING AND INSTRUMENTATION DETAIL



SITE LOCATION



GUNNISON ENERGY CORPORATION
AN OXBOW COMPANY

NO.	DATE	APPR.	REVISIONS	NO.	DATE	APPR.	REVISIONS	NO.	DATE	REFERENCE DOCUMENTS

PROJECT MANAGER	INITIALS	DATE
DESIGNED BY	DB:	
DRAWN BY	RE:	
REVIEWED BY	CP:	
	DB:	



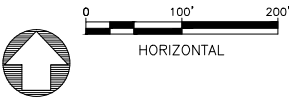
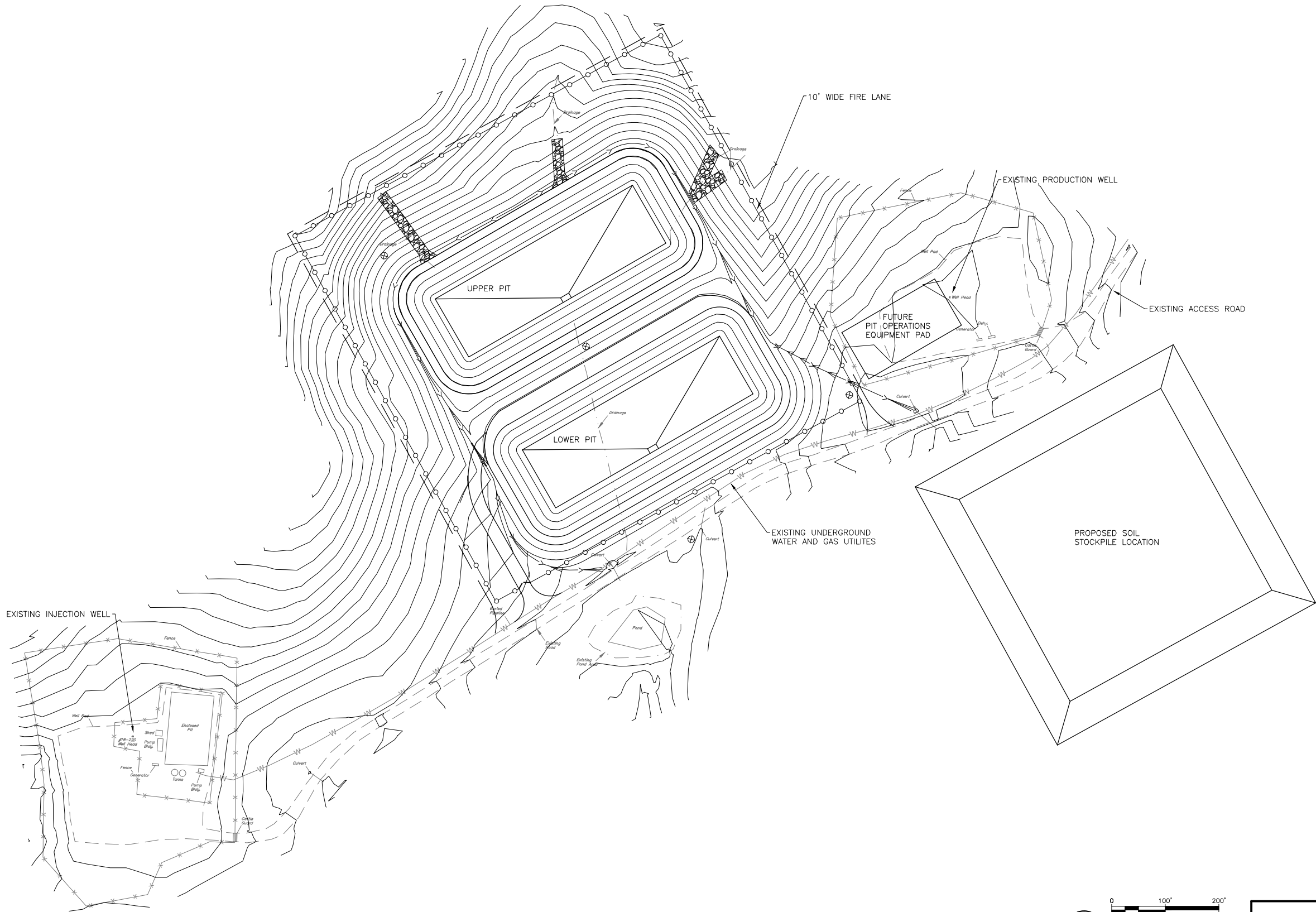
WESTON SOLUTIONS INC.
355 S. TELLER STREET
SUITE 300
LAKEWOOD, CO 80226

NOTES

- 1

TOPOGRAPHIC SITE SURVEY BY
UINTAH ENGINEERING AND LAND
SURVEYING NOVEMBER 2011.
- 2

EACH PIT HAS A VOLUME OF
225,000 BARRELS.



NO.	DATE	APPR.	REVISIONS	NO.	DATE	APPR.	REVISIONS	NO.	DATE	REFERENCE DOCUMENTS

PROJECT MANAGER	DB:	DATE
DESIGNED BY	RE:	
DRAWN BY	CP:	
REVIEWED BY	DB:	

HOTCHKISS WATER STORAGE FACILITY
GUNNISON COUNTY, COLORADO

GENERAL SITE PLAN

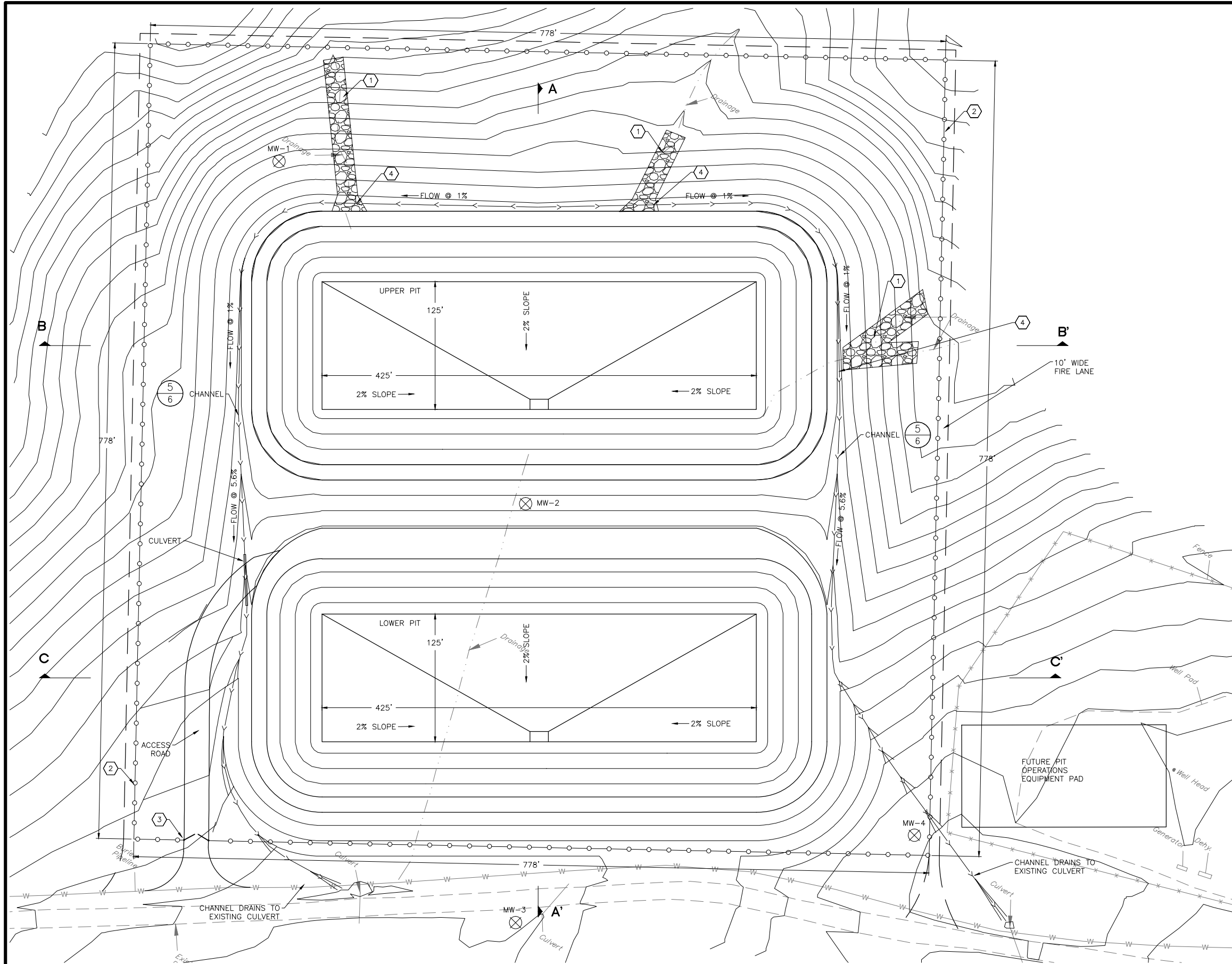
W.O.#14798

C101

REV. A

SHEET 2 OF 7

P:\Gunnison\711\P\IP\IP.dwg p\vec Plotted: January 13, 2011 - 3:52pm Layout: C102



KEYED NOTES

- 1 DRAINAGE RUNDOWN APRON TO BE DESIGNED.
- 2 CHAIN LINK FENCE, 8' HEIGHT WITH 3 STRAND BARBED WIRE.
- 3 24' WIDE DOUBLE PANEL ACCESS GATE.
- 4 ENERGY DISSIPATION PAD (TO BE DESIGNED).

MW-n PROPOSED MONITORING WELL LOCATION

CONSTRUCTION NOTES

- 1 CLEAR, GRUB, GRADE AND COMPACT 10' FIRE LANE
- 2 CUT = 184,750 CU. YDS.
FILL = 26,460 CU. YDS.

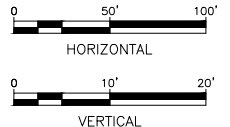
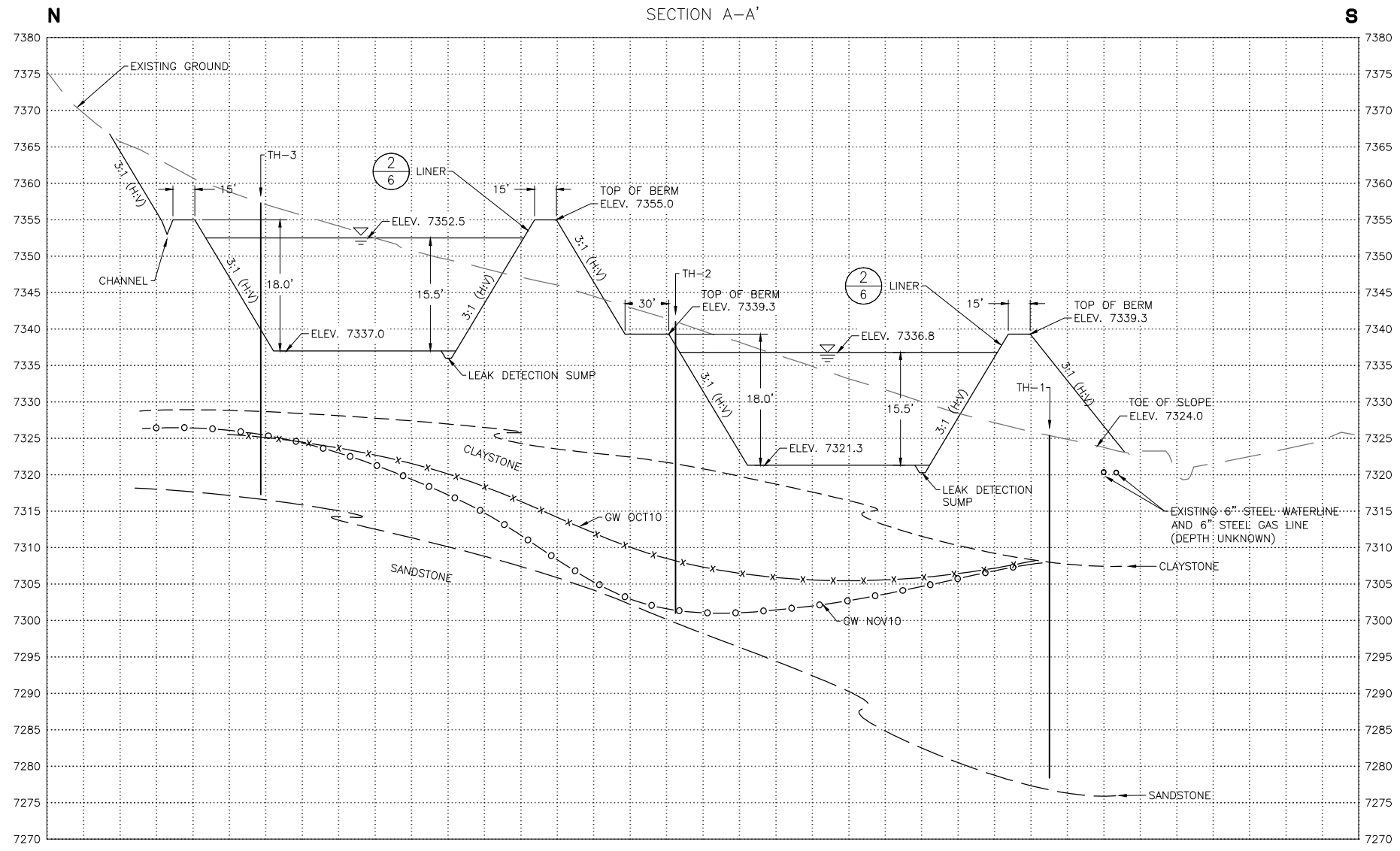


HOTCHKISS WATER STORAGE FACILITY
GUNNISON COUNTY, COLORADO

PIT GRADING PLAN

	INITIALS	DATE
PROJECT MANAGER	DB:	
DESIGNED BY	RE:	
DRAWN BY	CP:	
REVIEWED BY	DB:	

W.O.#	14798	C102	REV.	A	SHEET	3	OF	7
-------	-------	------	------	---	-------	---	----	---



NO.	DATE	APPR.	REVISIONS	NO.	DATE	APPR.	REVISIONS	NO.	DATE	REFERENCE DOCUMENTS

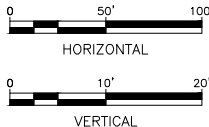
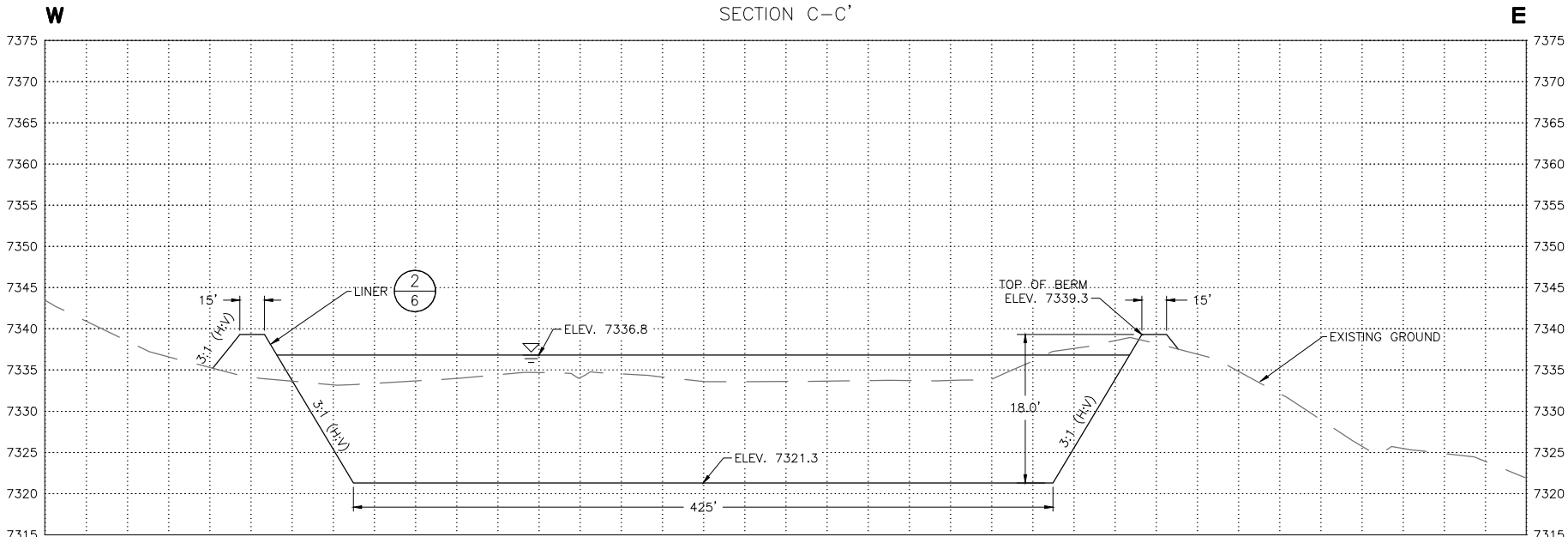
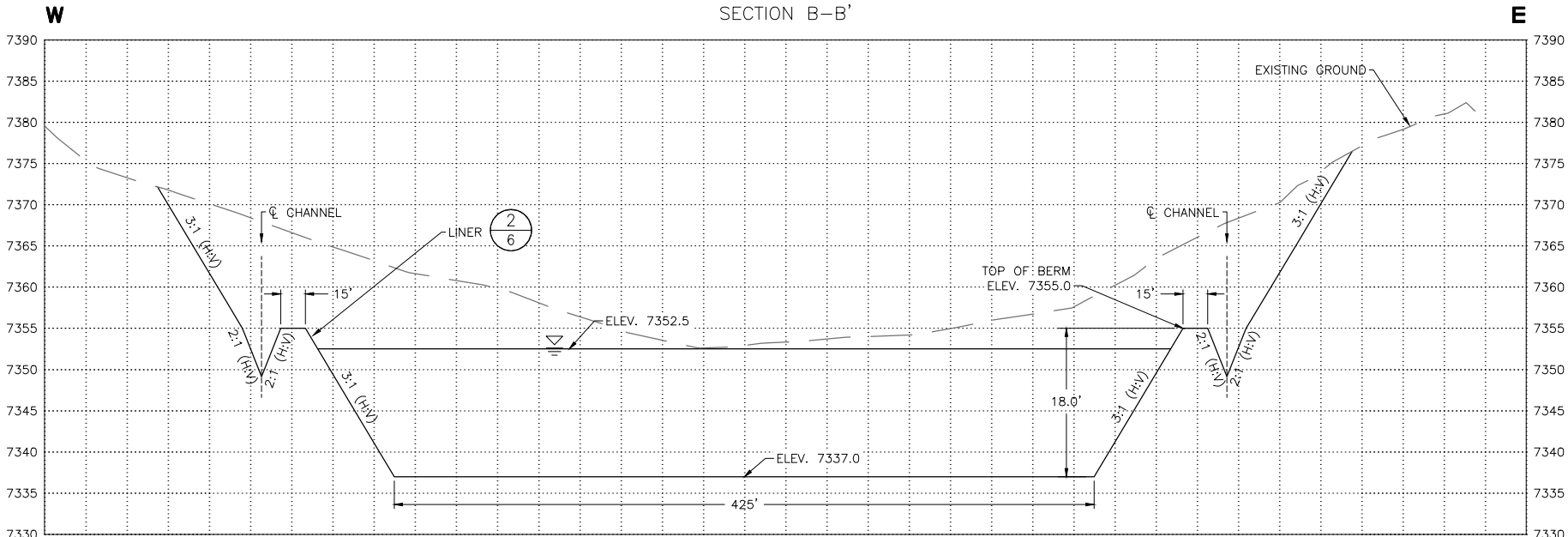
PROJECT MANAGER	INITIALS	DATE
DESIGNED BY	DB:	
DRAWN BY	RE:	
REVIEWED BY	CP:	
	DB:	

HOTCHKISS WATER STORAGE FACILITY
GUNNISON COUNTY, COLORADO

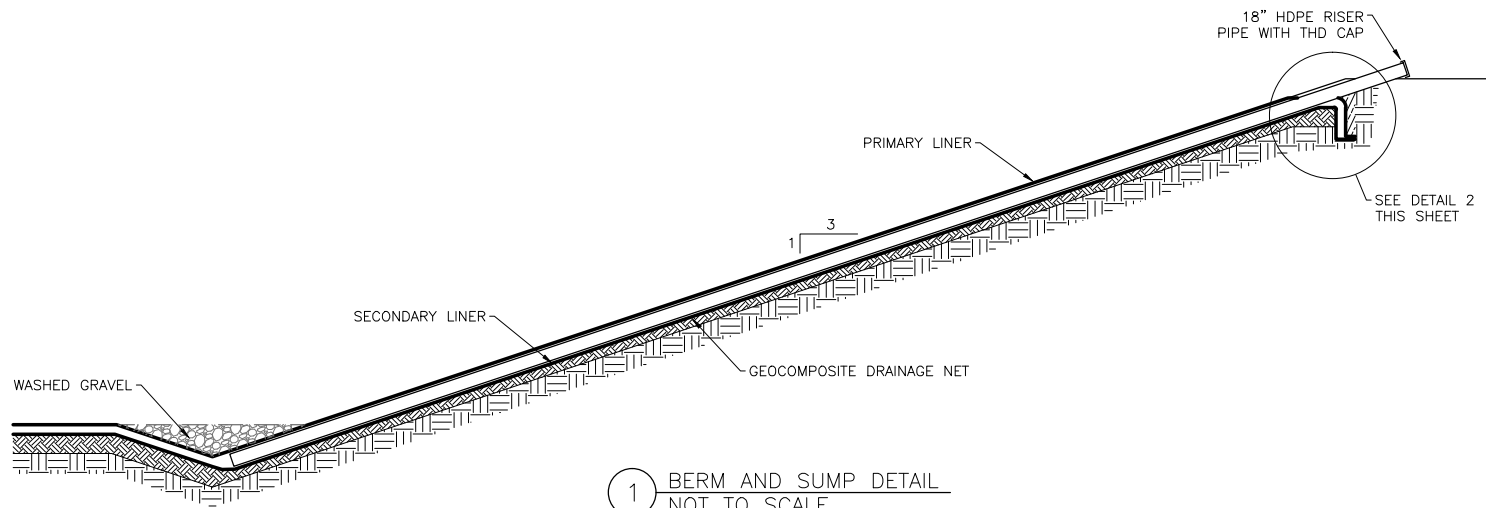
PIT SECTION A-A'

W.O.#	14798	C103	REV.	A	SHEET	4	OF	7
-------	-------	------	------	---	-------	---	----	---

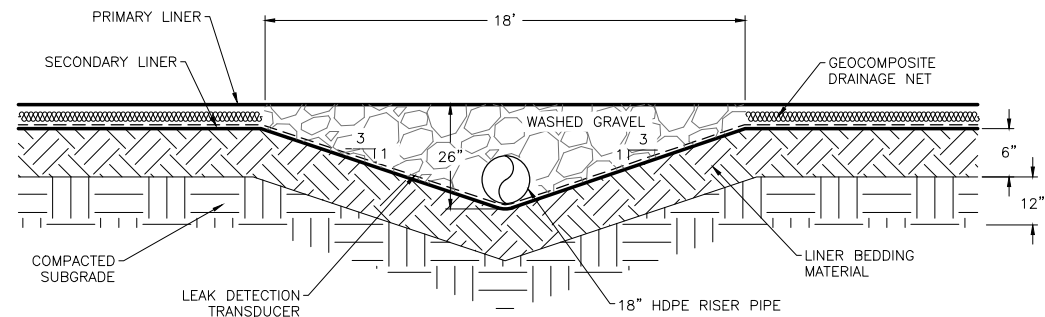
P:\Gunnison\711P\IP\IP.dwg p\lec Plotted: January 13, 2011 - 3:52pm Layout: C103



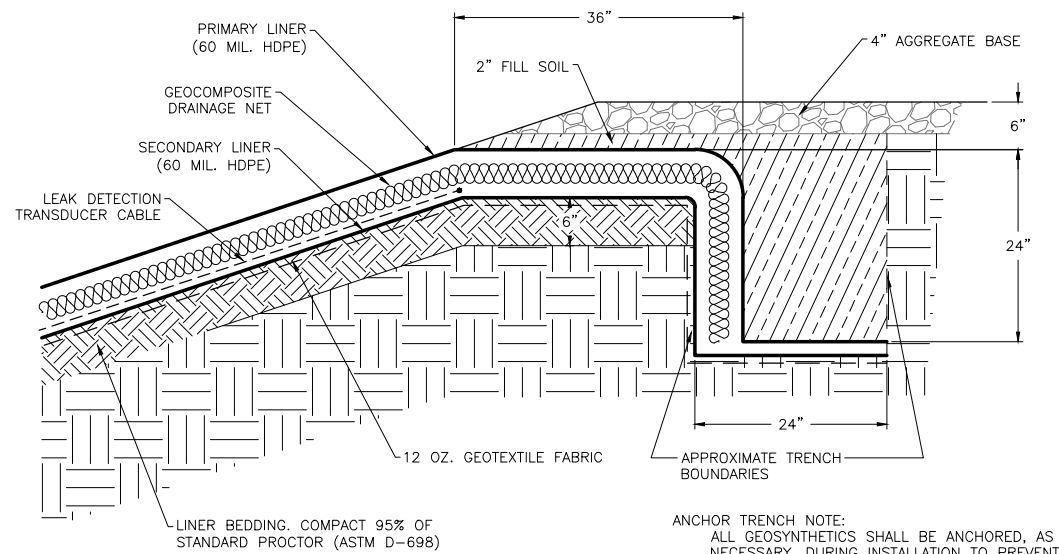
NO.	DATE	APPR.	REVISIONS	NO.	DATE	APPR.	REVISIONS	NO.	DATE	REFERENCE DOCUMENTS			INITIALS	DATE	HOTCHKISS WATER STORAGE FACILITY GUNNISON COUNTY, COLORADO					
												PROJECT MANAGER	DB:		PIT SECTION B-B' AND C-C' :					
												DESIGNED BY	RE:							
												DRAWN BY	CP:							
												REVIEWED BY	DB:							
																W.O.#	14798	C104	REV. A	SHEET 5 OF 7



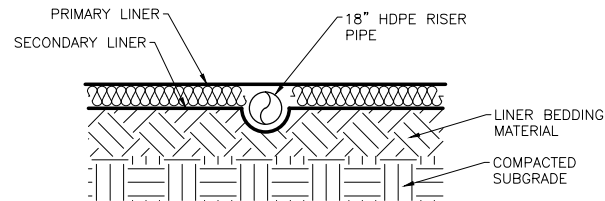
1 BERM AND SUMP DETAIL
NOT TO SCALE



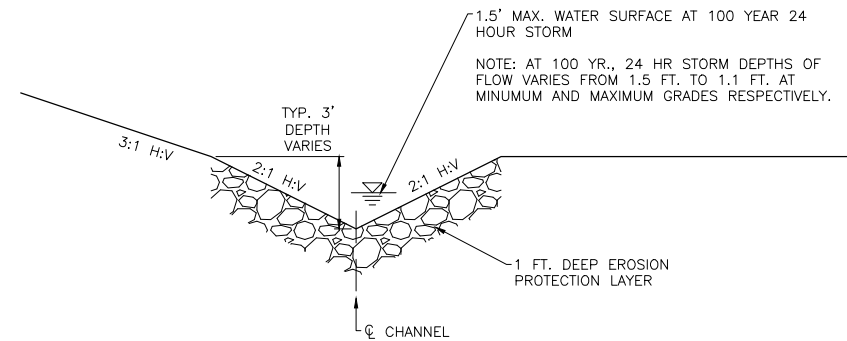
3 SUMP SECTION
NOT TO SCALE



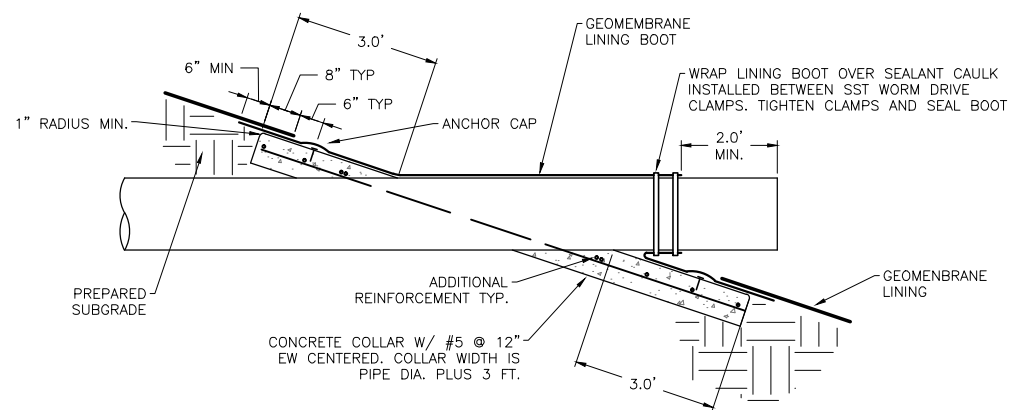
2 LINER AND ANCHOR TRENCH DETAIL
NOT TO SCALE



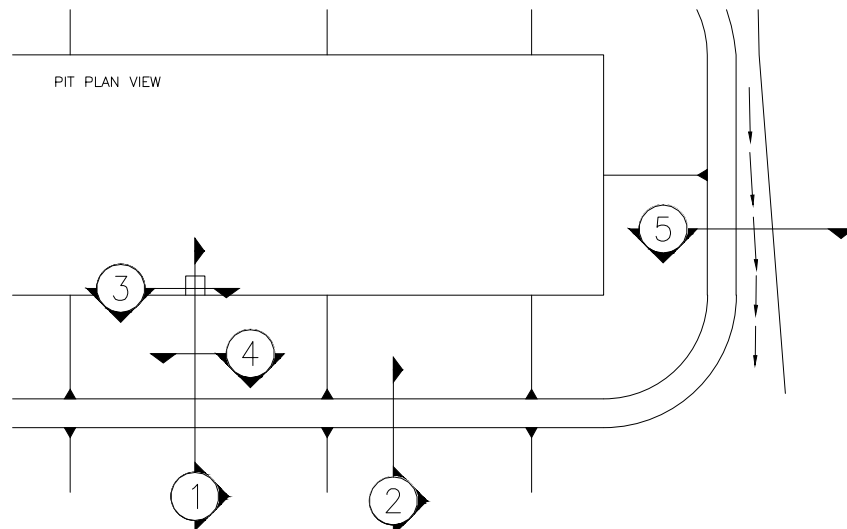
4 PIPE SECTION
NOT TO SCALE



5 CHANNEL TYPICAL SECTION
NOT TO SCALE



6 LINING PIPE PENETRATION
NOT TO SCALE



DETAIL KEY

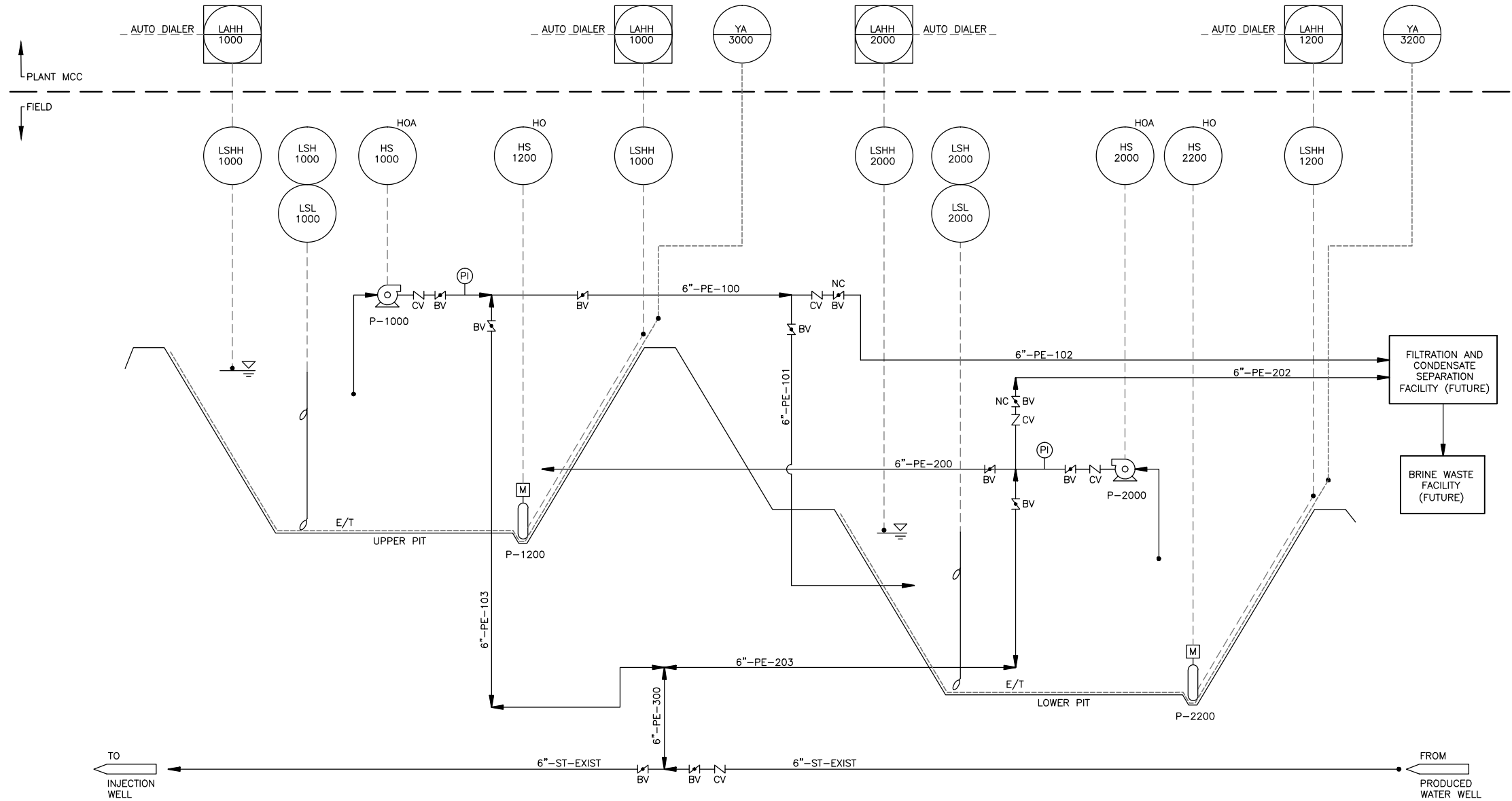


HOTCHKISS WATER STORAGE FACILITY
GUNNISON COUNTY, COLORADO

DETAILS

NO.	DATE	APPR.	REVISIONS	NO.	DATE	APPR.	REVISIONS	NO.	DATE	REFERENCE DOCUMENTS

	INITIALS	DATE
PROJECT MANAGER	DB:	
DESIGNED BY	RE:	
DRAWN BY	CP:	
REVIEWED BY	DB:	



LEGEND

- CENTRIFUGAL PUMP
- SUBMERSIBLE PUMP
- LEVEL PROBE
- CHECK VALVE (CV)
- BUTTERFLY VALVE (BV)
- E/T = ELECTRICAL TRACE
- EXIST = EXISTING
- HO = HAND ON-OFF
- HOA = HAND-OFF-AUTO
- HS = HAND SWITCH
- LAHH = LEVEL ALARM HIGH-HIGH
- LSH = LEVEL SWITCH HIGH
- LSHH = LEVEL SWITCH HIGH-HIGH
- LSL = LEVEL SWITCH LOW
- MCC = MOTOR CONTROL CENTER
- NC = NORMALLY CLOSED
- PE = POLYETHYLENE
- P-1000 = PUMP-DESIGNATION
- PI = PRESSURE INDICATOR
- ST = STEEL
- YA = EVENT (LEAK) ALARM
- FIELD MOUNTED-DISCRETE INSTRUMENTATION
- PRIMARY LOCATION MOUNTED-DISCRETE INSTRUMENTATION
- PRIMARY LOCATION-SHARED DISPLAY/CONTROL

P:\Gunnison\71\PIPING.dwg pylec Plotted: January 13, 2011 - 3:52pm Layout: C106

NO.	DATE	APPR.	REVISIONS	NO.	DATE	APPR.	REVISIONS	NO.	DATE	REFERENCE DOCUMENTS

	INITIALS	DATE
PROJECT MANAGER	DB:	
DESIGNED BY	RE:	
DRAWN BY	CP:	
REVIEWED BY	DB:	

HOTCHKISS WATER STORAGE FACILITY
GUNNISON COUNTY, COLORADO

PIPING AND INSTRUMENTATION DIAGRAM

W.O.#14798

C106

REV. A

SHEET7OF7