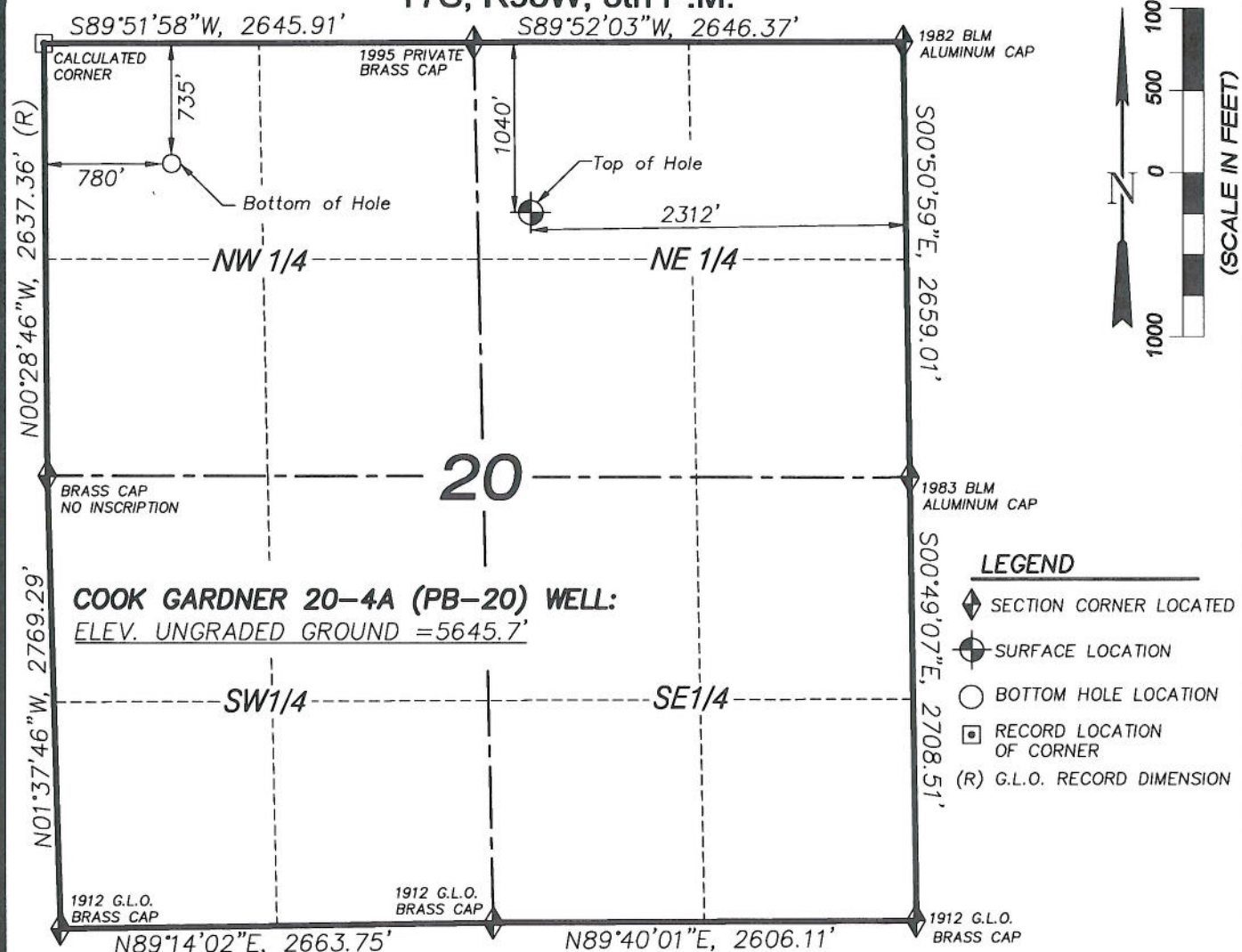


T7S, R95W, 6th P.M.



**COOK GARDNER 20-4A WELL (PB-20)**  
(WELLHEAD LOCATION) NAD 83  
LATITUDE = 39.42762° N  
LONGITUDE = 108.01970° W  
(BOTTOM HOLE LOCATION) NAD 83  
LATITUDE = 39.42843° N  
LONGITUDE = 108.02753° W

**CERTIFICATE OF SURVEYOR**

I, TED TAGGART OF FRUITA, COLORADO HEREBY CERTIFY THAT THIS MAP WAS MADE FROM NOTES TAKEN DURING AN ACTUAL SURVEY MADE BY ME OR UNDER MY DIRECTION FOR ENCANAL OIL & GAS (USA) INC. AND THAT THIS LOCATION HAS BEEN STAKED ON THE GROUND AS SHOWN HEREON.



906 Main Street  
Evanston, Wyoming 82930  
Phone No. (307) 789-4545

**MAP to ACCOMPANY**  
**APPLICATION for PERMIT to DRILL**  
**EnCana Oil & Gas (USA) Inc.**  
**Cook Gardner 20-4A (PB-20) Well**  
NW1/4 NE1/4, SECTION 20  
T7S, R95W, 6th P.M.  
GARFIELD COUNTY, COLORADO

Location Plat		Scale: 1" = 1000'	SHEET <b>1h</b> OF 10
Project No.	09-04-39	Date Surveyed: 9/12/09	
Date Drawn:	12/09/10	Latest Revision Date:	