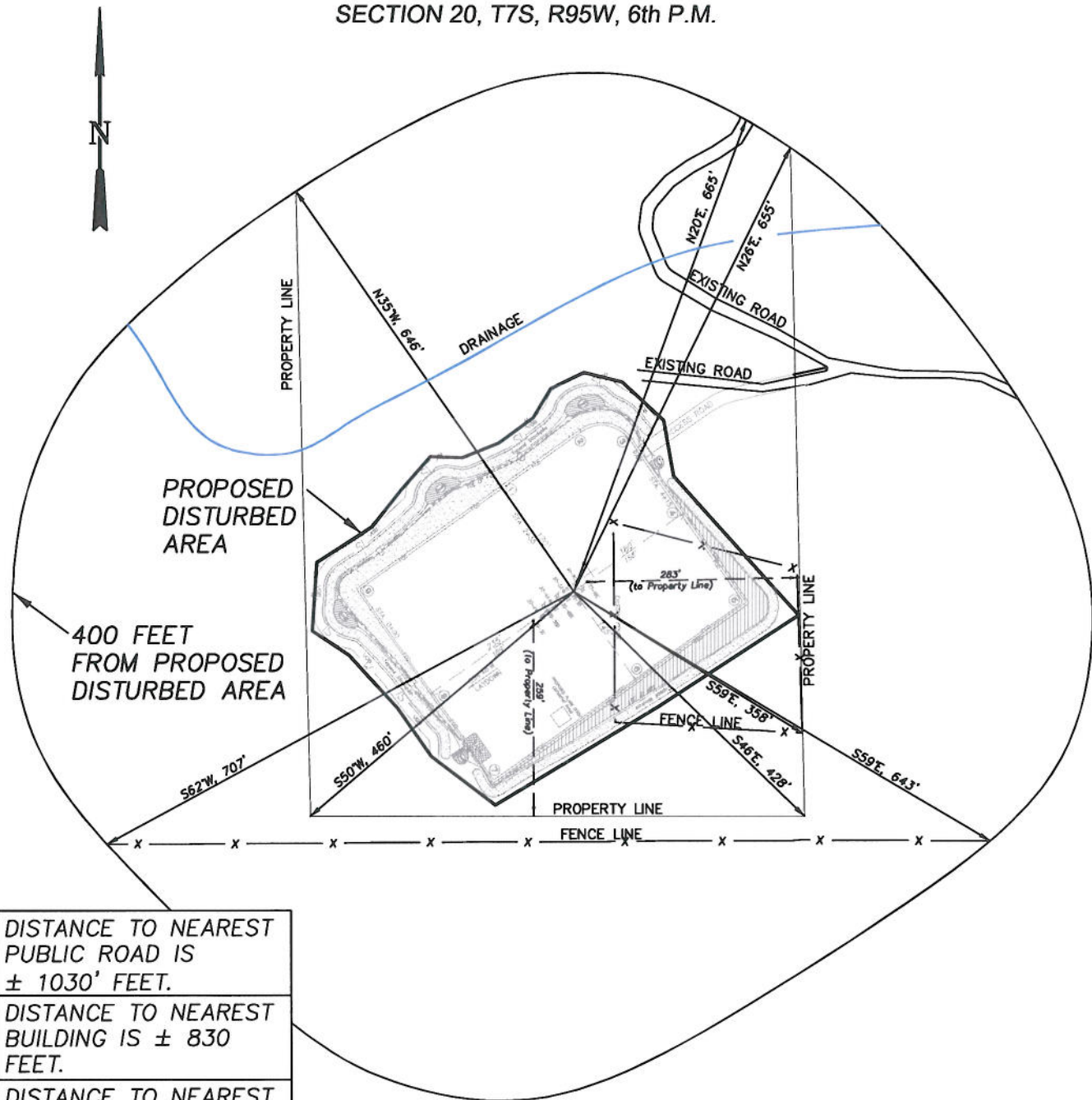


**EnCana Oil & Gas (USA) Inc.**  
**ADDENDUM TO LEGAL PLATS FOR**  
**PB-20 Well Pad**

SECTION 20, T7S, R95W, 6th P.M.



DISTANCE TO NEAREST  
PUBLIC ROAD IS  
± 1030' FEET.

DISTANCE TO NEAREST  
BUILDING IS ± 830  
FEET.

DISTANCE TO NEAREST  
ABOVE GROUND UTILITY  
IS ± 935' FEET.

DISTANCE TO NEAREST  
RAILROAD IS ±12,600'.

Surface use of the area is  
grazing. Vegetation consists  
mainly of sage brush and native  
grasses.

200      0      100      200  
 (SCALE IN FEET)



906 Main Street  
 Evanston, Wyoming 82930  
 Phone No. (307) 789-4545

Addendum		Scale: 1" = 200'	SHEET <b>1j</b> OF 10
Project No.	09-04-39	Date Surveyed: 9/12/09	
Date Drawn:	12/09/10	Latest Revision Date:	