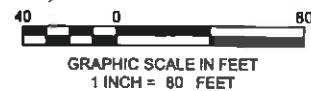


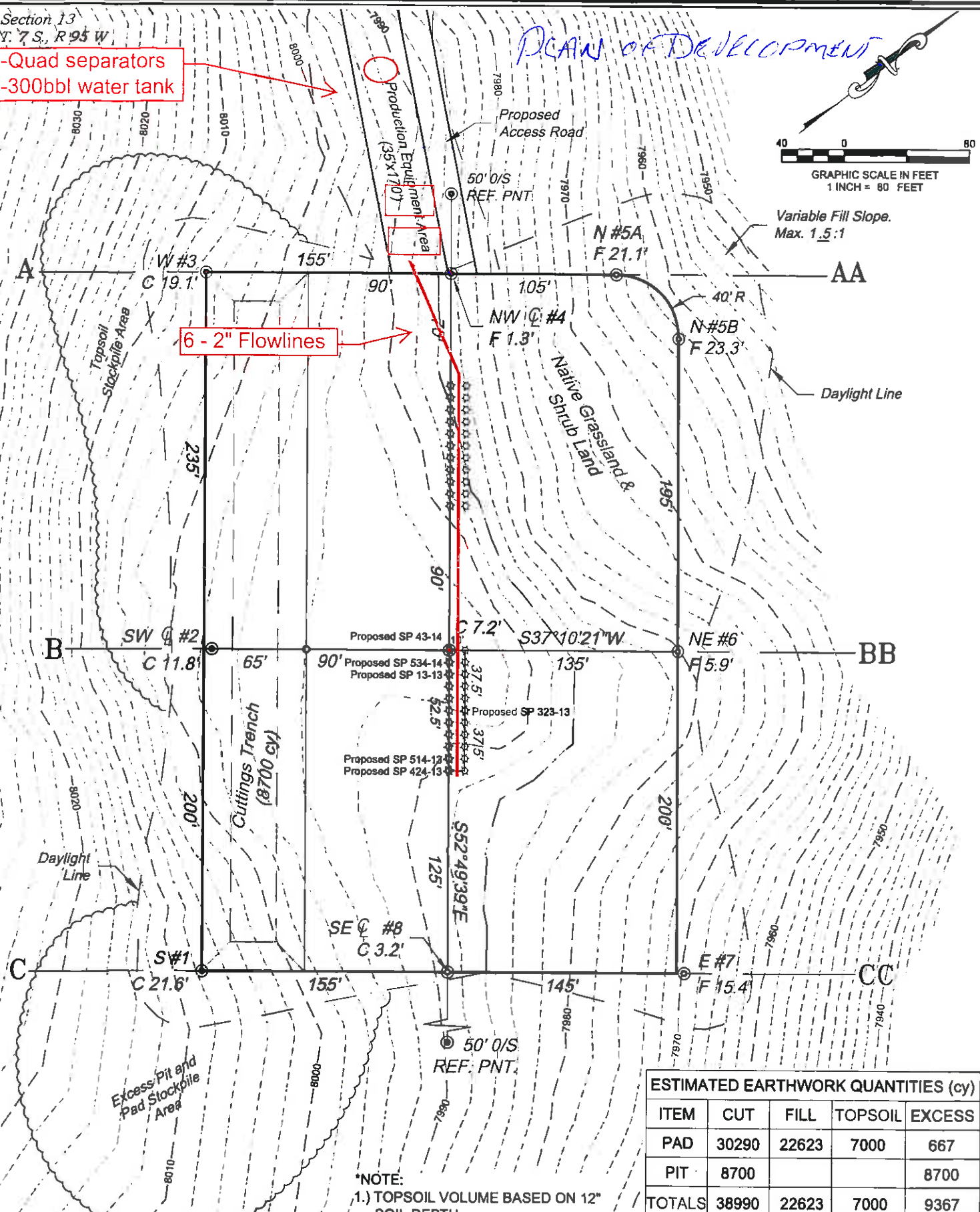
Section 13
T. 7 S., R. 95 W.

2-Quad separators
1-300bbl water tank

PLAN OF DEVELOPMENT



Variable Fill Slope.
Max. 1.5:1



*NOTE:
1.) TOPSOIL VOLUME BASED ON 12" SOIL DEPTH.
2.) Total Disturbed Area = ±7.27 ac.

ESTIMATED EARTHWORK QUANTITIES (cy)

ITEM	CUT	FILL	TOPSOIL	EXCESS
PAD	30290	22623	7000	667
PIT	8700			8700
TOTALS	38990	22623	7000	9367

Construction Plan Prepared for:
Williams Williams Production, RMT

SP 13-13 Drill Pad - Plat 2

Production Equipment Detail Map

SCALE: 1" = 80'
DATE: 12/13/10
PLAT: 2 of 7
PROJECT: Williams Valley
DFT: cws

136 East Third Street
Rt. 66, Okla. 73101
Ph: (970) 625-1330
Fax: (970) 625-2773

BOOKCLIFF
Survey Services, Inc.

Geologist Information

General: New location, 38 new wells (6 initially)
 Ownership: Fed Surface, Fed Minerals
 SUA Status: N/A
 Spacing Units: 2 spacing units –Sec. 13 and Sec. 14
 Adjacent Owners: Double B Ranch, Savage



Plan of Development

Access: New access off of planned access road for the SP 32-14.
Drilling: Efficiency rig
Cuttings: In trench on location 2 Project Rufison wells on pad – will have a separate small, lined cuttings trench for these two wells.
SIMOPS: No SIMOPS for first round
Completion: Frac first 6 wells on location. Will pull frac water from the GV 88-1 pad via 6" existing buried water supply line. Can also frac from SP 32-14 pad if needed. If we frac from the SP 32-14 pad, will run 3 – 4.5" surface frac lines to the pad
Flowback: Flow back on pad, will push flowback water to the GV 88-1 pit
Prod Equip: Production equipment to be set on south side of access road immediately adjacent to pad.
Pipeline: A new gas line will be installed ditching straight south from the SP 32-14 (will not follow road to avoid switchbacking line). Produced water and condensate will be plumbed back to the Doghead tank farm. Will need 2 condensate lines installed from the SP 32-14 to the SP 13-13 (for oil from 2 spacing units).

Legend

- Existing Frac Water Supply Line
- Pipeline (Valley, Proposed)
- Existing Road
- Proposed Road
- Proposed Production Equipment Area
- Proposed Daylight Line
- Proposed Pad or Pit

Williams Production RMT

SP 13-13 Plan of Development
 T7S R95W, Section 13

January 6, 2011

