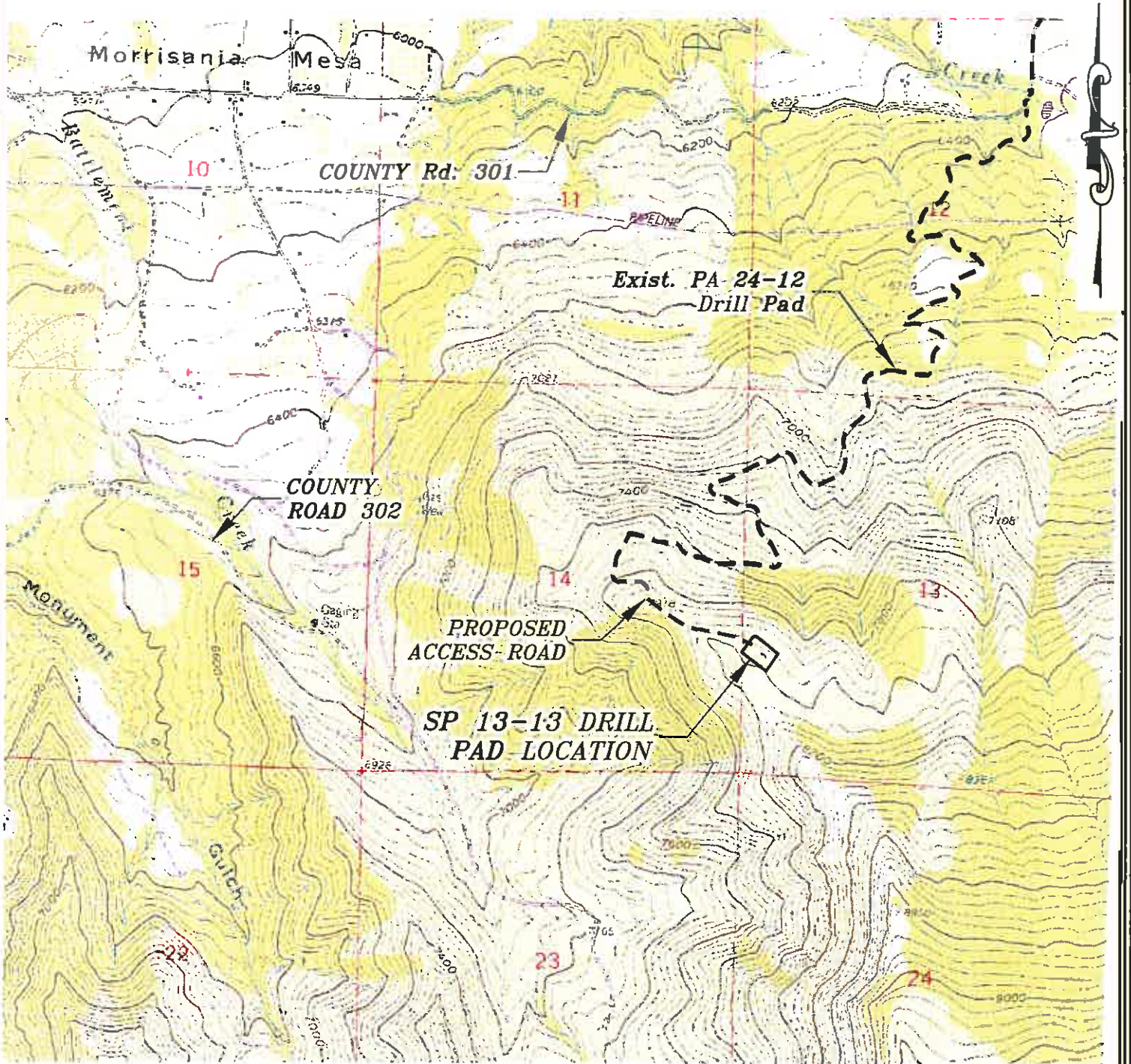


Section 13
T. 7 S., R 95 W



GRAPHIC SCALE IN FEET
1 INCH = 2000 FEET

ACCESS DESCRIPTION:

FROM THE INTERSECTION OF STATE HIGHWAY 6 AND COUNTY ROAD 323 (RULISON ROAD) NORTH OF RULISON, PROCEED SOUTHERLY ALONG COUNTY ROAD 323 (RULISON ROAD) ±1.1 MILES TO THE INTERSECTION WITH COUNTY ROAD 309 (RULISON PARACHUTE ROAD), PROCEED LEFT IN AN EASTERLY DIRECTION ±2.3 MILES TO THE INTERSECTION WITH COUNTY ROAD 301, PROCEED RIGHT IN A SOUTHERLY TO WESTERLY DIRECTION ±3.5 MILES TO THE INTERSECTION WITH A DIRT/GRAVEL ROAD, PROCEED LEFT IN A SOUTHERLY DIRECTION ±1.5 MILES TO THE EXISTING PA 24-12 DRILL PAD, PROCEED ACROSS DRILL PAD TO ACCESS ROAD ON WEST SIDE OF DRILL PAD, PROCEED IN A SOUTHERLY TO WESTERLY DIRECTION ±1.5 TO AN INTERSECTION WITH A DIRT/GRAVEL ROAD, PROCEED LEFT IN A SOUTHERLY TO SOUTHEASTERLY DIRECTION ±0.6 MILES TO THE SP 13-13 DRILL PAD LOCATION, AS SHOWN HEREON.

Construction Plan Prepared for:
Williams Williams Production, RMT

SCALE: 1" = 2000'
DATE: 12/13/10
PLAT: 5 of 7
PROJECT: Williams Valley
DFT: cws

SP 13-13 Drill Pad - Plat 5
ACCESS ROAD MAP #TOPOMAP P

134 East Third Street
Bldg. Colorado #1850
Ph. (970) 625-1331
Fax (970) 625-2773

