

Lat40°, LLC

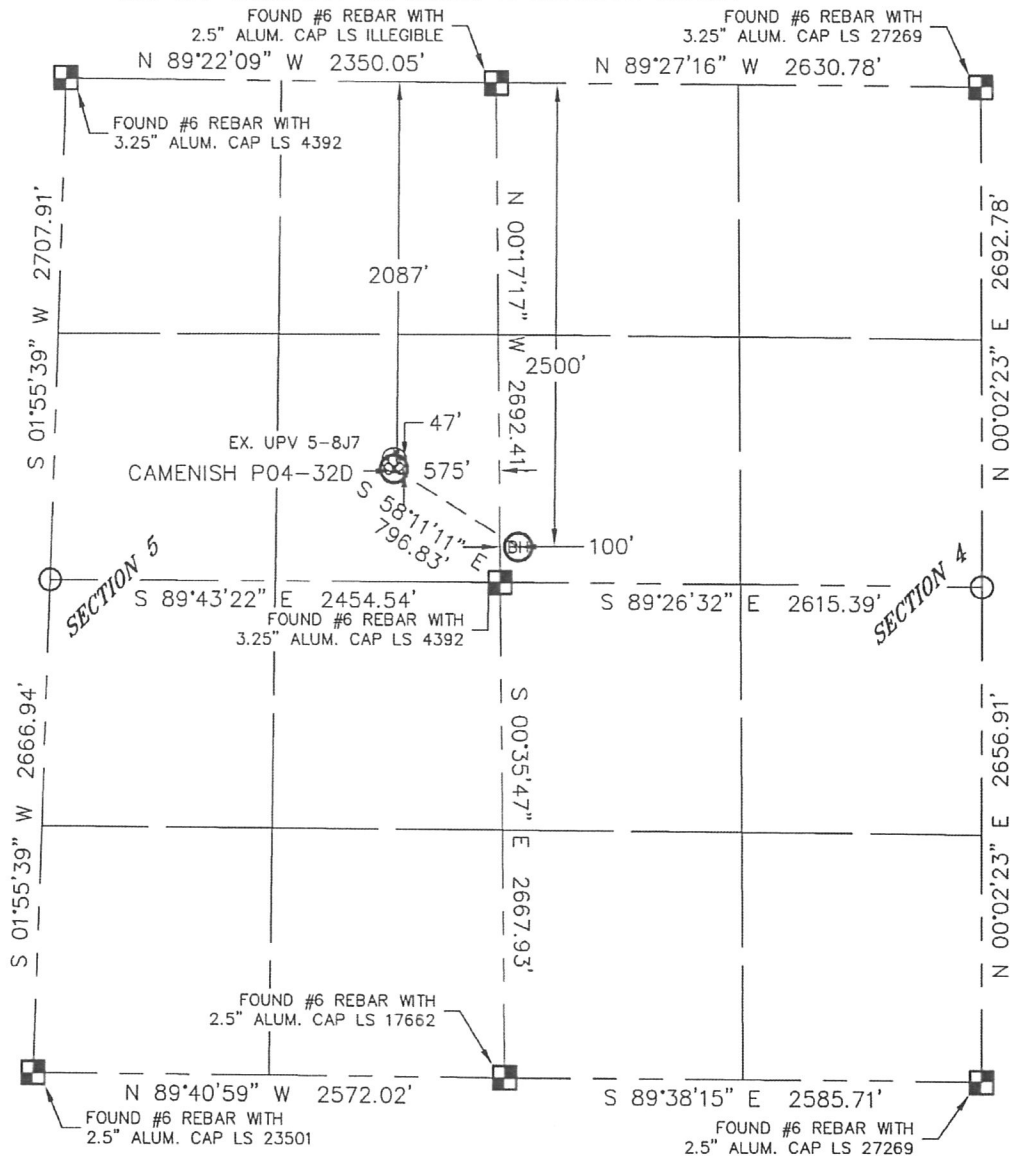
1635 Foxtrail Drive, Suite 325

Loveland, CO 80538

WELL LOCATION CERTIFICATE

SECTION: 4+5
TOWNSHIP: 3N
RANGE: 67W

THIS MAP DOES NOT REPRESENT A BOUNDARY SURVEY



In accordance with a request from ROBBIE MILLER with Noble Energy Inc., Lat40°, LLC has determined the surface location of the CAMENISH P04-32D to be 2087' from the NORTH line and 575' from the EAST line as measured at right angles from the section line of Section 5, Township 3 North, Range 67 West and the bottom hole to be 2500' from the NORTH line and 100' from the WEST line as measured at right angles from the section line of Section 4, Township 3 North, Range 67 West of the Sixth Principal Meridian, County of Weld, State of Colorado.

I hereby state that this Well Location Certificate was prepared by me, or under my direct supervision, that the fieldwork was completed on 6/3/10, for and on behalf of Noble Energy Inc.. That this is not a Land Survey Plat or an Improvement Survey Plat, and that it is not to be relied upon for establishment of fence, building, or other future improvement lines.

NOTE:

- 1) Bearings shown are Grid Bearings of the Colorado State Plane Coordinate System, North Zone, North American Datum 1983/2007. The lineal dimensions as contained herein are based upon the "U.S. Survey Foot."
- 2) Ground elevations are based on an observed GPS elevation (NAVD 1988 DATUM).
- 3) NEAREST EXISTING WELL: UPV 5-8J7 47'
- 4) IMPROVEMENTS: See VISIBLE IMPROVEMENTS exhibit for all visible improvements within 400' of disturbed area.
- 5) SURFACE USE: EX. WELL SITE, IRRIGATED CROP FIELD

NOTE

According to Colorado law, you must commence any legal action based upon any defect in this W.L.C. within three years after you discover such defect. In no event, may any action based upon any defect in this survey be commenced more than ten years after the date of the certificate shown hereon. (13-80-105 C.R.S.)

LEGEND

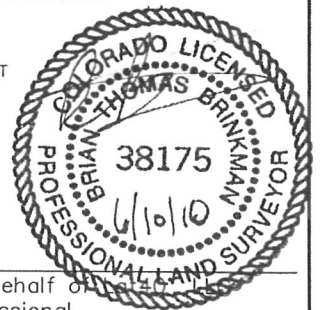
- = ALIQUOT MONUMENT AS DESCRIBED
 = CALCULATED POSITION

SURFACE LOCATION

LATITUDE: 40.25660°N
 LONGITUDE: 104.90694°W
 PDOP: 1.8
 ELEV: 4898
 1/4, 1/4: SE1/4NE1/4
 NEAREST PROPERTY LINE: 176' SOUTHEAST

BOTTOM HOLE

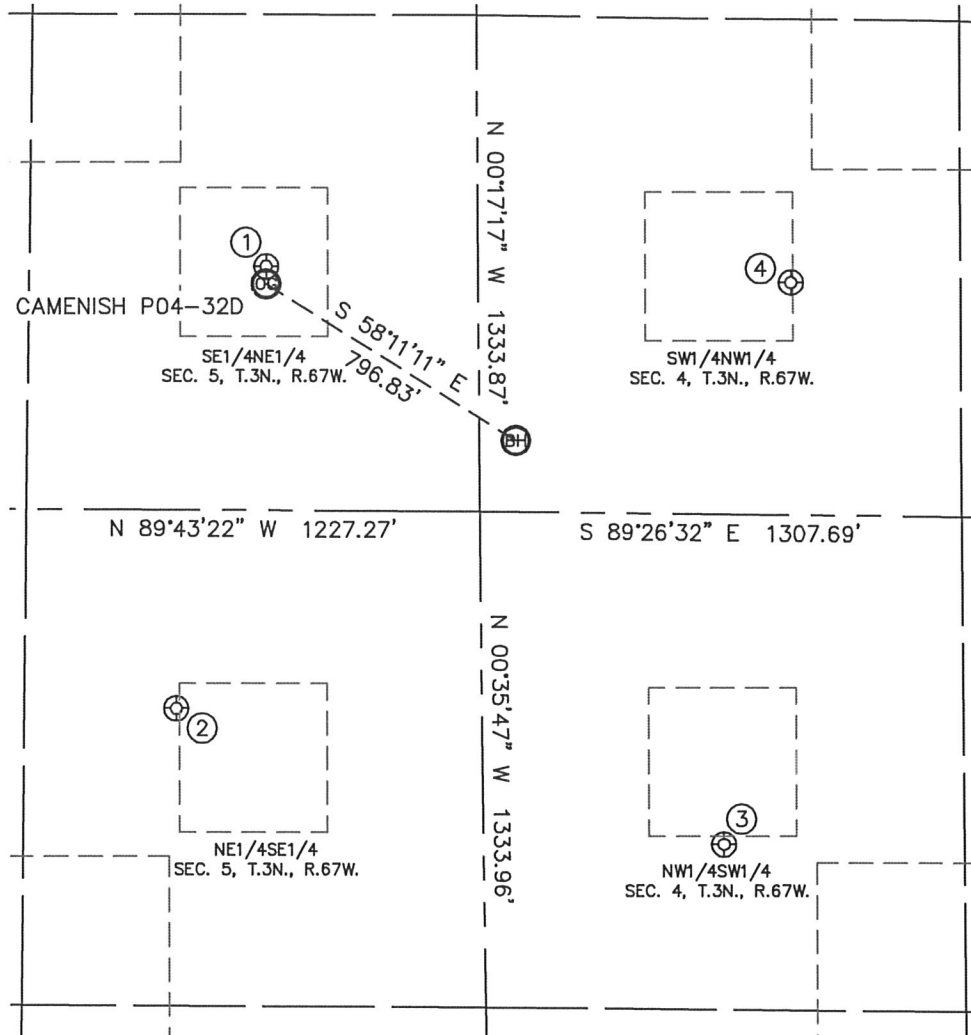
LATITUDE: 40.25544°N
 LONGITUDE: 104.90453°W



Brian T. Brinkman—On behalf of
 Colorado Licensed Professional
 Land Surveyor No. 38175
 PROJECT#: 2010030

SITE SKETCH

SECTION: 4+5
TOWNSHIP: 3N
RANGE: 67W



①

UPV 5-8J7
SE1/4NE1/4
2040' FNL
574' FEL
LAT-40.25673°N
LONG-104.90694°W
PDOP: 1.7
ELEV: 4899

②

UPRC 5-9L
NE1/4SE1/4
2133' FSL
828' FEL
LAT-40.25348°N
LONG-104.90784°W
PDOP: 1.5
ELEV: 4880

③

SCHLAGEL 13-4
NW1/4SW1/4
1777' FSL
653' FWL
LAT-40.25245°N
LONG-104.90253°W
PDOP: 1.7
ELEV: 4875

④

CAMENISH P 4-5
SW1/4NW1/4
2068' FNL
850' FWL
LAT-40.25659°N
LONG-104.90184°W
PDOP: 1.9
ELEV: 4892

