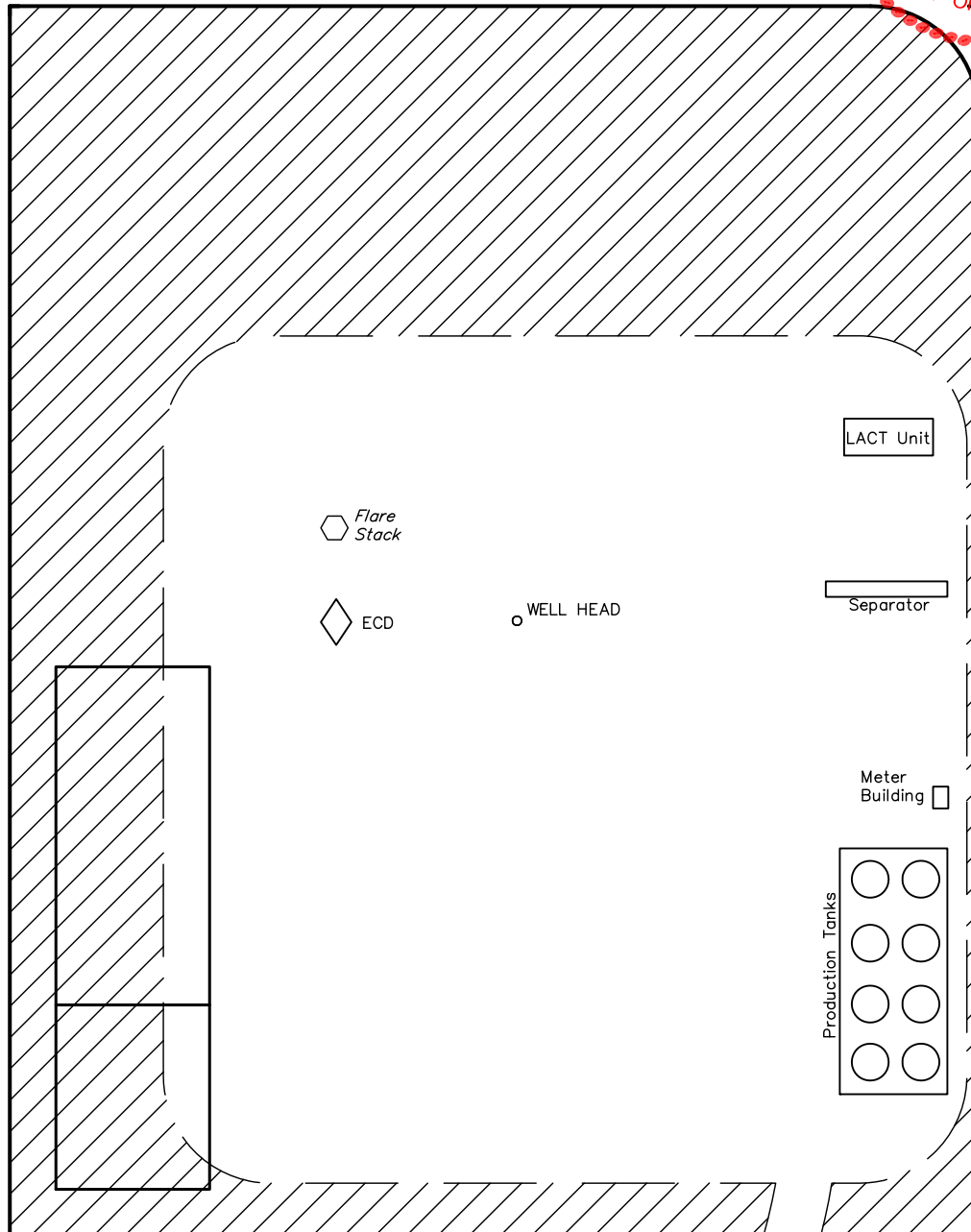




SCALE: 1" = 60'
DATE: 09-20-10
DRAWN BY: K.G.

EOG RESOURCES, INC.
RECLAMATION DIAGRAM FOR
GARDEN CREEK #14-21H
SECTION 21, T11N, R62W, 6th P.M.
895' FNL 502' FWL

FIGURE #4



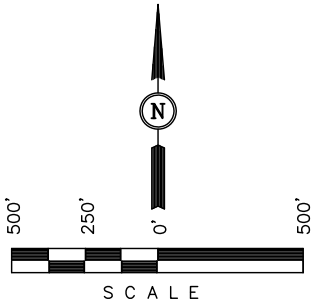
APPROXIMATE ACREAGES
UN-RECLAIMED = ± 1.638 ACRES



EOG RESOURCES, INC.

LOCATION DRAWING FOR
GARDEN CREEK #14-21H
SECTION 21, T11N, R62W, 6th P.M.
895' FNL 502' FWL

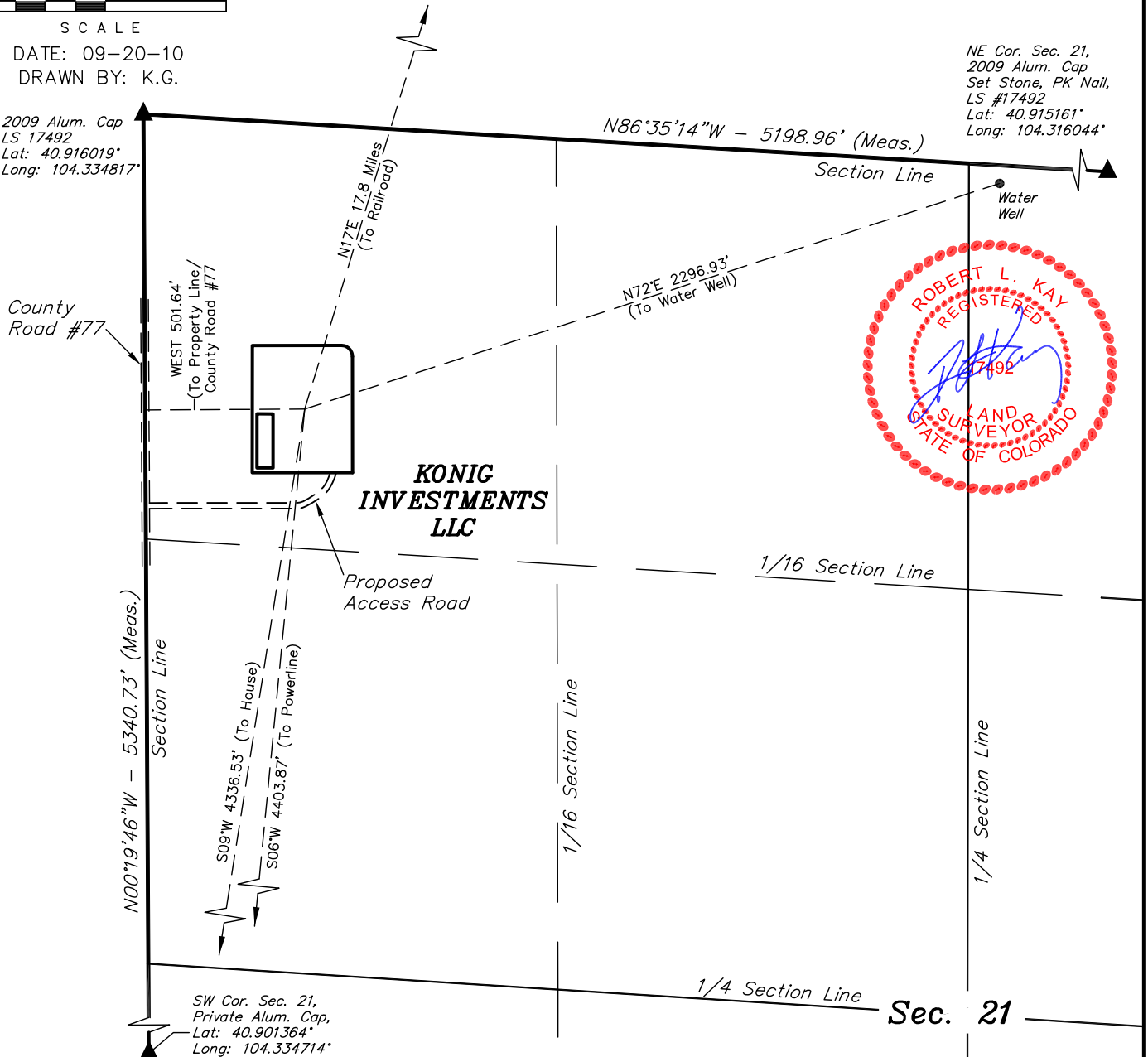
FIGURE #5



DATE: 09-20-10
DRAWN BY: K.G.

2009 Alum. Cap
LS 17492
Lat: 40.916019°
Long: 104.334817°

NE Cor. Sec. 21,
2009 Alum. Cap
Set Stone, PK Nail,
LS #17492
Lat: 40.915161°
Long: 104.316044°



PLANT COMMUNITY

- ☐ DISTURBED GRASSLAND
- ☐ NATIVE GRASSLAND
- ☐ SHRUB LAND
- ☐ PLAINS RIPARIAN
- ☐ MOUNTAIN RIPARIAN
- ☐ FOREST LAND
- ☐ WETLANDS AQUATIC
- ☐ ALPINE
- ☐ OTHER (Describe): _____

CURRENT LAND USE

- CROP LAND: ☐ IRRIGATED ☐ DRY LAND ☐ IMPROVED PASTURE ☐ HAY MEADOW ☐ CRP
- NON-CROP LAND: ☐ RANGELAND ☐ TIMBER ☐ RECREATIONAL ☐ OTHER (Describe) _____
- SUBDIVIDED: ☐ INDUSTRIAL ☐ COMMERCIAL ☐ RESIDENTIAL _____

FUTURE LAND USE

- CROP LAND: ☐ IRRIGATED ☐ DRY LAND ☐ IMPROVED PASTURE ☐ HAY MEADOW ☐ CRP
- NON-CROP LAND: ☐ RANGELAND ☐ TIMBER ☐ RECREATIONAL ☐ OTHER (Describe) _____
- SUBDIVIDED: ☐ INDUSTRIAL ☐ COMMERCIAL ☐ RESIDENTIAL _____

UINTAH ENGINEERING & LAND SURVEYING
85 So. 200 East * Vernal, Utah 84078 * (435) 789-1017