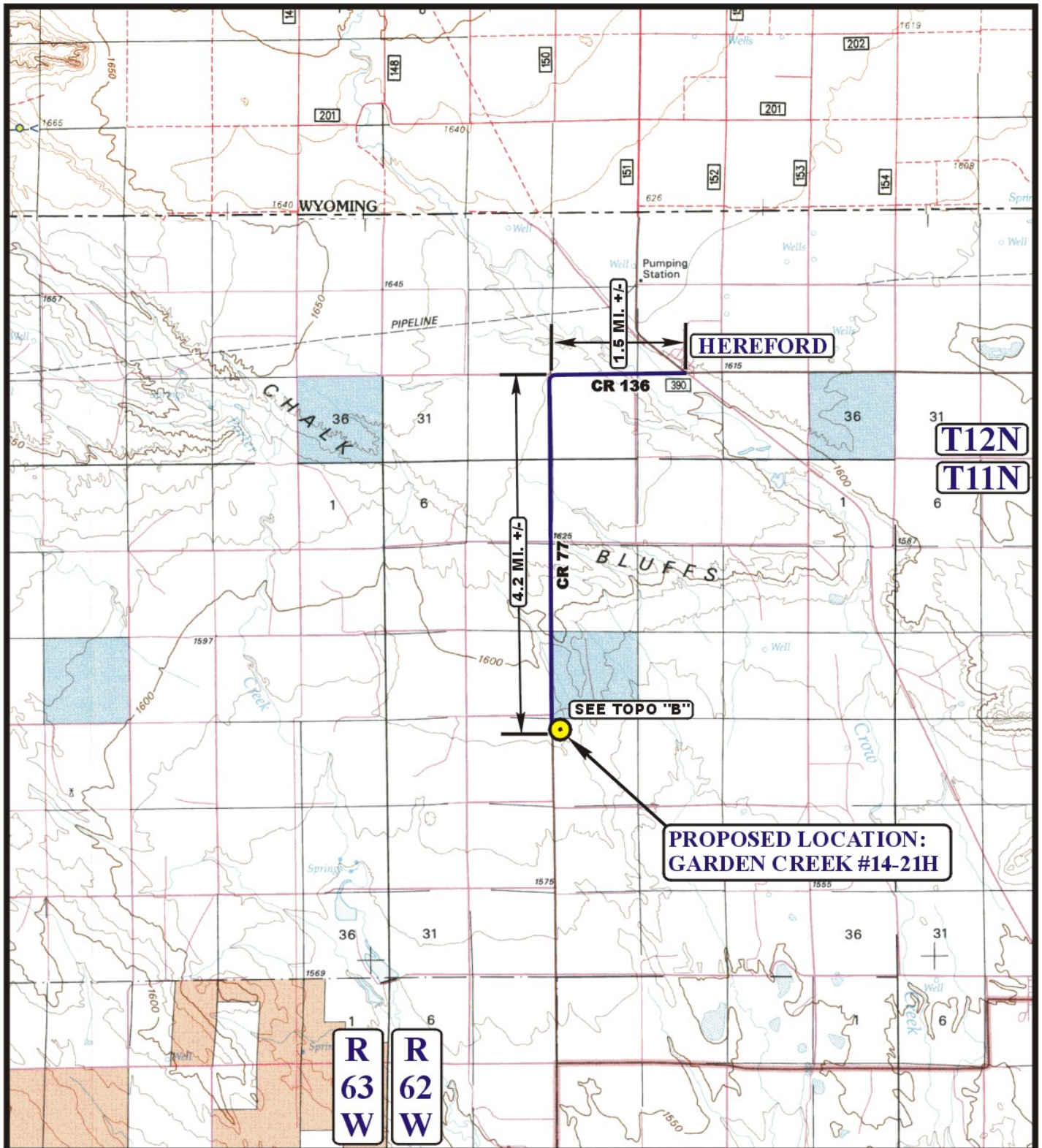


EOG RESOURCES, INC.
GARDEN CREEK #14-21H
SECTION 21, T11N, R62W, 6th P.M.

PROCEED IN A WESTERLY DIRECTION FROM HEREFORD, COLORADO ON COUNTY ROAD 136 APPROXIMATELY 1.5 MILES TO THE JUNCTION OF COUNTY ROAD 136 AND COUNTY ROAD 77 TO THE SOUTH; TURN LEFT AND PROCEED IN A SOUTHERLY DIRECTION APPROXIMATELY 4.2 MILES TO THE BEGINNING OF THE PROPOSED ACCESS ROAD TO THE EAST; FOLLOW ROAD FLAGS IN AN EASTERLY DIRECTION APPROXIMATELY 607' TO THE PROPOSED LOCATION.

TOTAL DISTANCE FROM HEREFORD, COLORADO TO THE PROPOSED LOCATION IS APPROXIMATELY 5.8 MILES.



LEGEND:

● PROPOSED LOCATION



EOG RESOURCES, INC.

GARDEN CREEK #14-21H
SECTION 21, T11N, R62W, 6th P.M.
895' FNL 502' FWL



Uintah Engineering & Land Surveying
85 South 200 East Vernal, Utah 84078
(435) 789-1017 * FAX (435) 789-1813

ACCESS ROAD
MAP

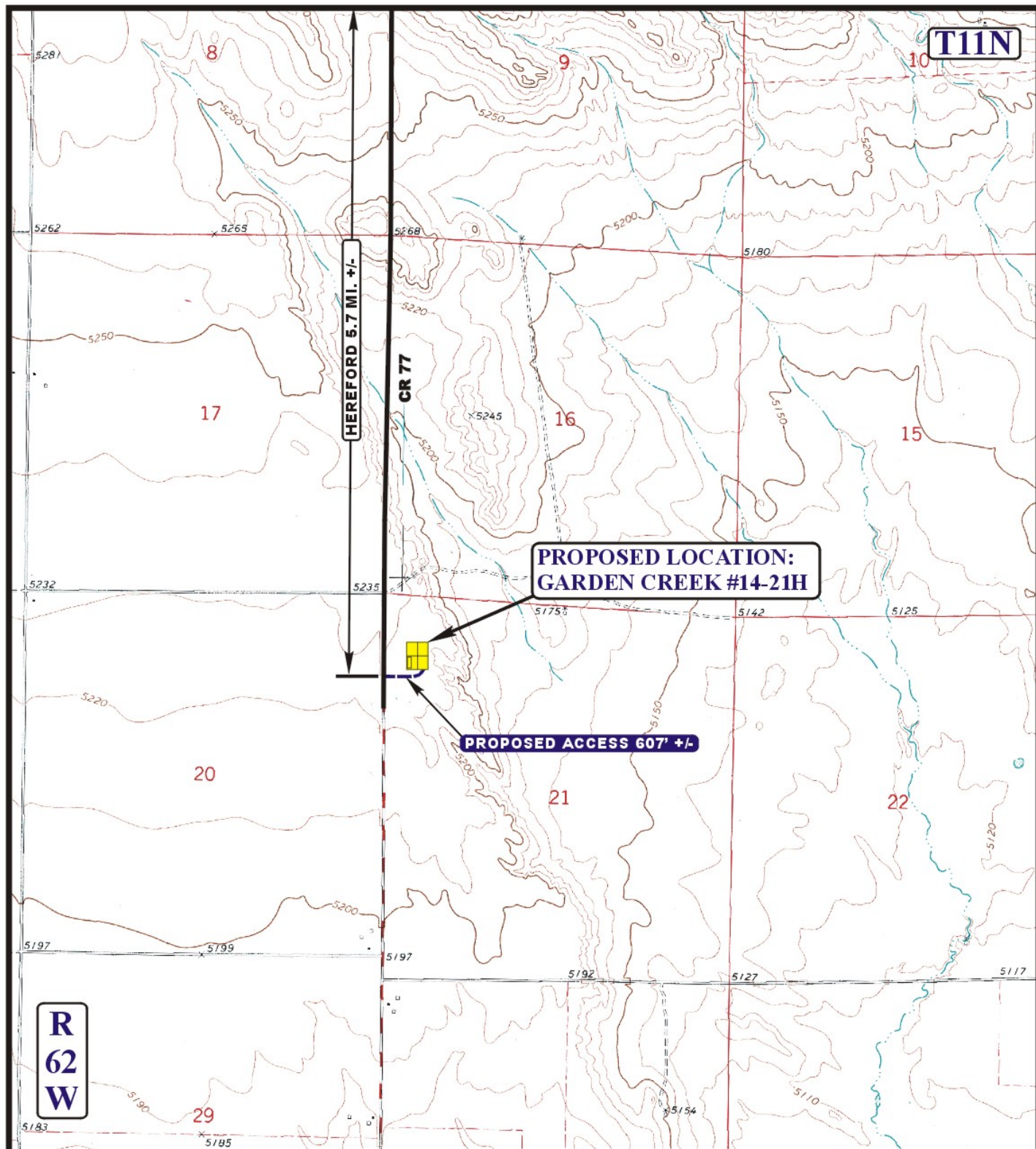
09 20 10
MONTH DAY YEAR

SCALE: 1:100,000

DRAWN BY: Z.L.

REVISED: 00-00-00





LEGEND:

———— EXISTING ROAD
 - - - - - PROPOSED ACCESS ROAD



EOG RESOURCES, INC.

GARDEN CREEK #14-21H
 SECTION 21, T11N, R62W, 6th P.M.
 895' FNL 502' FWL



Uintah Engineering & Land Surveying
 85 South 200 East Vernal, Utah 84078
 (435) 789-1017 * FAX (435) 789-1813

ACCESS ROAD
 MAP

09 20 10
 MONTH DAY YEAR



SCALE: 1" = 2000' DRAWN BY: Z.L. REVISED: 00-00-00