

EOG RESOURCES, INC.
EASTMAN CREEK #05-33H
LOCATED IN WELD COUNTY, COLORADO
SECTION 33, T11N, R66W, 6th P.M.

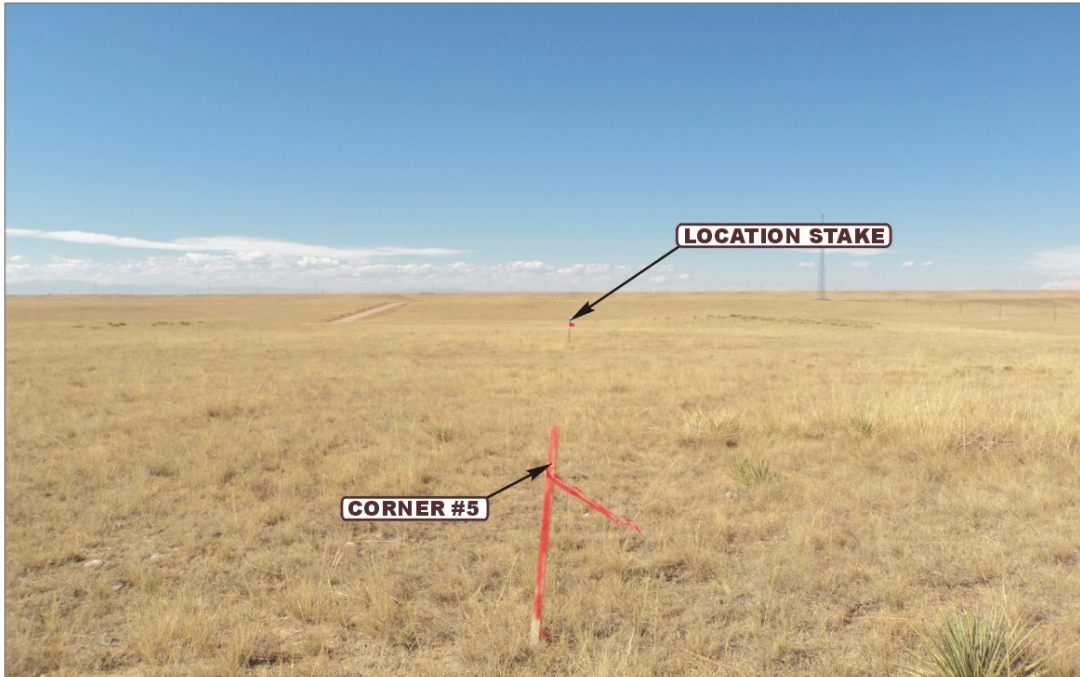


PHOTO: VIEW FROM CORNER #5 TO LOCATION STAKE

CAMERA ANGLE: WESTERLY



PHOTO: VIEW FROM BEGINNING OF PROPOSED ACCESS

CAMERA ANGLE: NORTHERLY



- Since 1964 -



Uintah Engineering & Land Surveying

85 South 200 East Vernal, Utah 84078
(435) 789-1017 * FAX (435) 789-1813

LOCATION PHOTOS

10 **20** **10**
MONTH DAY YEAR

TAKEN BY: G.M.

DRAWN BY: J.J.

REVISED: 00-00-00

PHOTO
P1

EOG RESOURCES, INC.
EASTMAN CREEK #05-33H
LOCATED IN WELD COUNTY, COLORADO
SECTION 33, T11N, R66W, 6th P.M.



PHOTO: VIEW OF LOCATION STAKE

CAMERA ANGLE: NORTHERLY



PHOTO: VIEW OF LOCATION STAKE

CAMERA ANGLE: EASTERLY



- Since 1964 -



Uintah Engineering & Land Surveying
85 South 200 East Vernal, Utah 84078
(435) 789-1017 * FAX (435) 789-1813

LOCATION PHOTOS

10 20 10
MONTH DAY YEAR

PHOTO
P2

TAKEN BY: G.M.

DRAWN BY: J.J.

REVISED: 00-00-00

EOG RESOURCES, INC.
EASTMAN CREEK #05-33H
LOCATED IN WELD COUNTY, COLORADO
SECTION 33, T11N, R66W, 6th P.M.

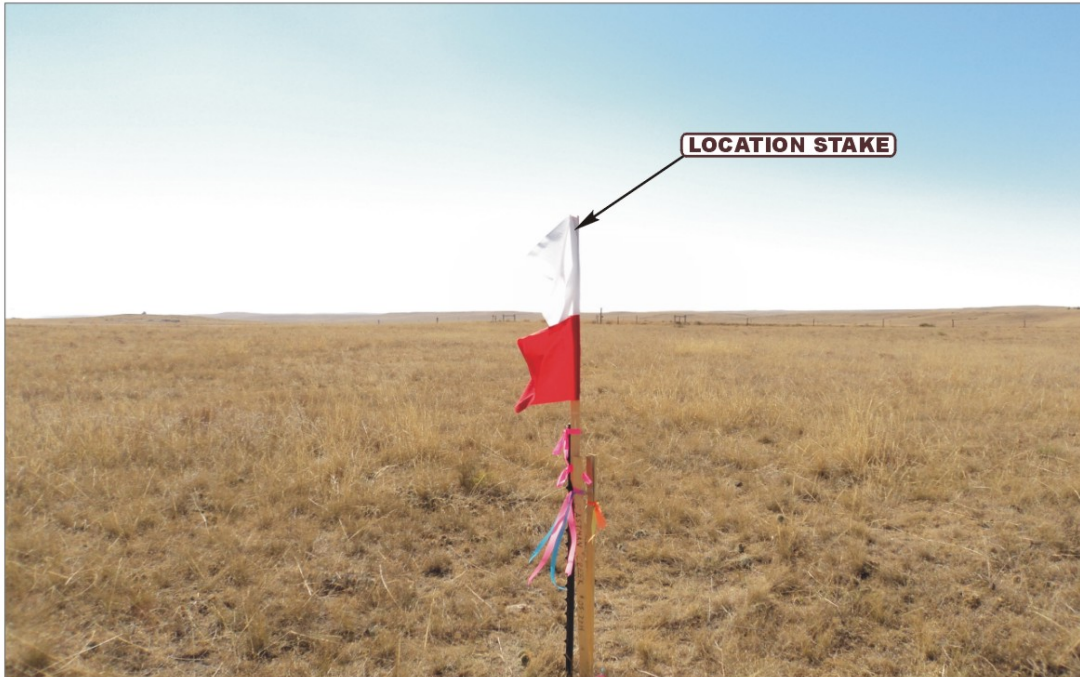


PHOTO: VIEW OF LOCATION STAKE

CAMERA ANGLE: SOUTHERLY



PHOTO: VIEW OF LOCATION STAKE

CAMERA ANGLE: WESTERLY



- Since 1964 -



Uintah Engineering & Land Surveying
85 South 200 East Vernal, Utah 84078
(435) 789-1017 * FAX (435) 789-1813

LOCATION PHOTOS

10 20 10
MONTH DAY YEAR

PHOTO
P3

TAKEN BY: G.M.

DRAWN BY: J.J.

REVISED: 00-00-00