

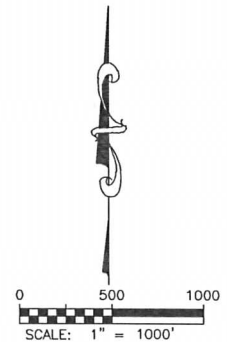
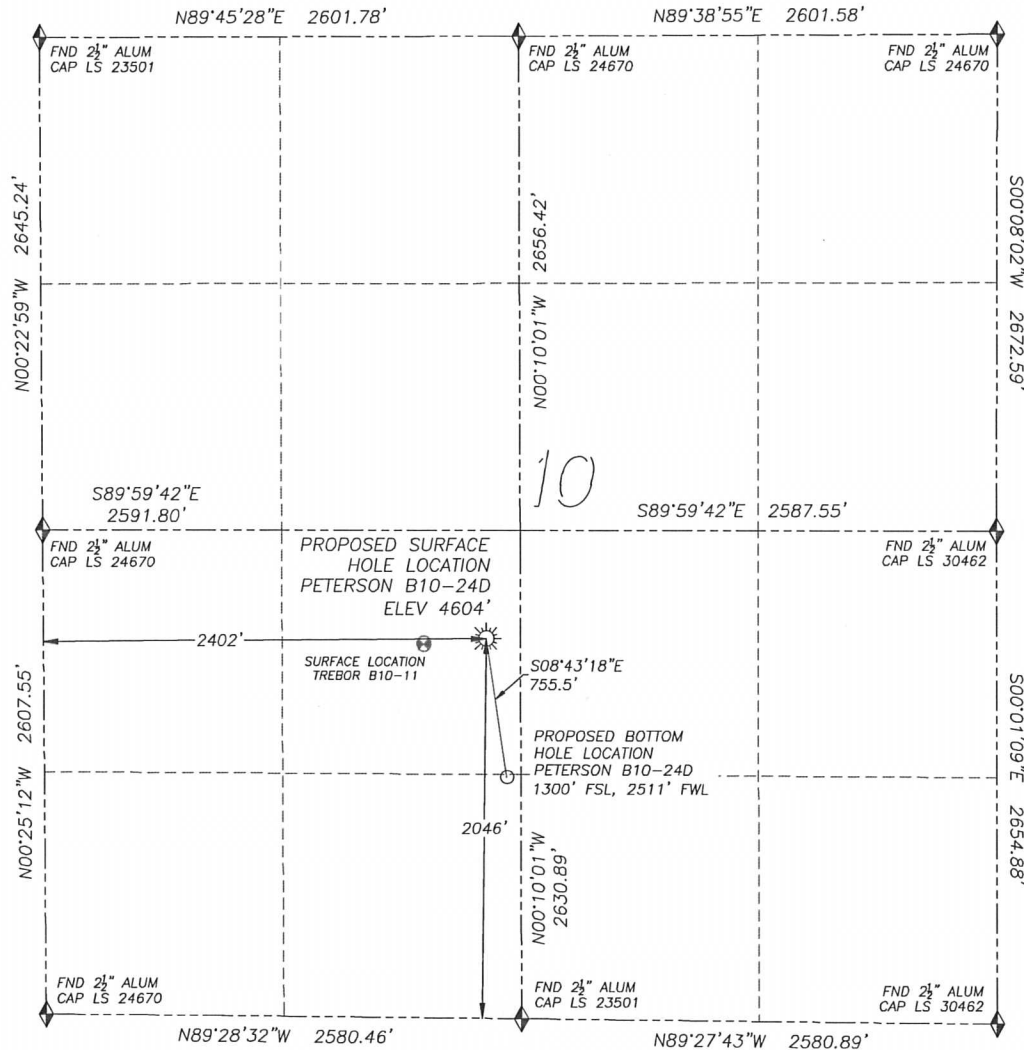
DALEY LAND SURVEYING, INC.

PARKER, CO. 80134

303 953 9841

# WELL LOCATION CERTIFICATE PETERSON B10-24D

SECTION 10, TOWNSHIP 5 NORTH, RANGE 64 WEST OF THE 6TH PRINCIPAL MERIDIAN



## LEGEND

- ◆ FOUND MONUMENT AS DESCRIBED
- ☼ PROPOSED WELL
- EXISTING WELL
- BOTTOM HOLE
- ⊙ ABANDONED WELL

**NAD 83 LATITUDE AND LONGITUDE**

PETERSON B10-24D SURFACE HOLE:

LATITUDE: N40.41214°

LONGITUDE: W104.53701°

ELEVATION: 4604'

FOOTAGE: 2046' FSL, 2402' FWL

PDOP: 1.2

QTR/QTR: NE4/SW4

PROP LINE: 155'± NORTHWEST

BOTTOM HOLE:

LATITUDE: N40.41209°

LONGITUDE: W104.53660°

FOOTAGE: 1300' FSL, 2511' FWL

**NEAREST EXISTING WELL:**

TREBOR B10-11 SURFACE HOLE

LATITUDE: N40.41206°

LONGITUDE: W104.53823°

ELEVATION: 4602'

342' WEST

IN ACCORDANCE WITH A REQUEST FROM JOE JOHNSON OF NOBLE ENERGY INC., DALEY LAND SURVEYING, INC. HAS DETERMINED THE SURFACE LOCATION OF THE PETERSON B10-24D WELL TO BE 2046' FSL, 2402' FWL, AS MEASURED AT NINETY (90) DEGREES FROM THE SECTION LINES OF SECTION 10, TOWNSHIP 5 NORTH, RANGE 64 WEST OF THE 6TH PRINCIPAL MERIDIAN, WELD COUNTY, COLORADO. THE BOTTOM HOLE LOCATION, PROVIDED BY THE CLIENT, IS TO BE 1300' FSL, 2511' FWL.

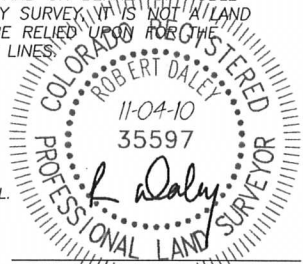
I HEREBY CERTIFY THAT THIS WELL LOCATION CERTIFICATE WAS PREPARED BY ME OR UNDER MY DIRECT SUPERVISION, THAT THE WORK WAS COMPLETED ON 11/03/2010 FOR AND ON BEHALF OF NOBLE ENERGY, INC., AND THAT THIS MAP DOES NOT REPRESENT A BOUNDARY SURVEY. IT IS NOT A LAND SURVEY PLAT OR AN IMPROVEMENT SURVEY PLAT AND IT IS NOT TO BE RELIED UPON FOR THE ESTABLISHMENT OF FENCE, BUILDING OR OTHER FUTURE IMPROVEMENT LINES.

## NOTES:

- 1) BEARINGS FOR THIS MAP ARE ASSUMED AND BASED UPON GPS OBSERVATIONS MADE BETWEEN MONUMENTS LOCATED AT THE SOUTHEAST CORNER AND EAST QUARTER CORNER OF SECTION 10, T.5N., R.64W.
- 2) HORIZONTAL DATUM IS NAD83.
- 3) VERTICAL DATUM IS NAVD83. ELEVATIONS ARE DERIVED FROM GPS OBSERVATIONS PROCESSED THROUGH OPUS, UTILIZING THE GEOID03 MODEL.
- 4) SEE LOCATION DRAWING FOR VISIBLE IMPROVEMENTS WITHIN 600' OF PROPOSED SURFACE HOLE LOCATION.
- 5) SURFACE USE: AGRICULTURAL.

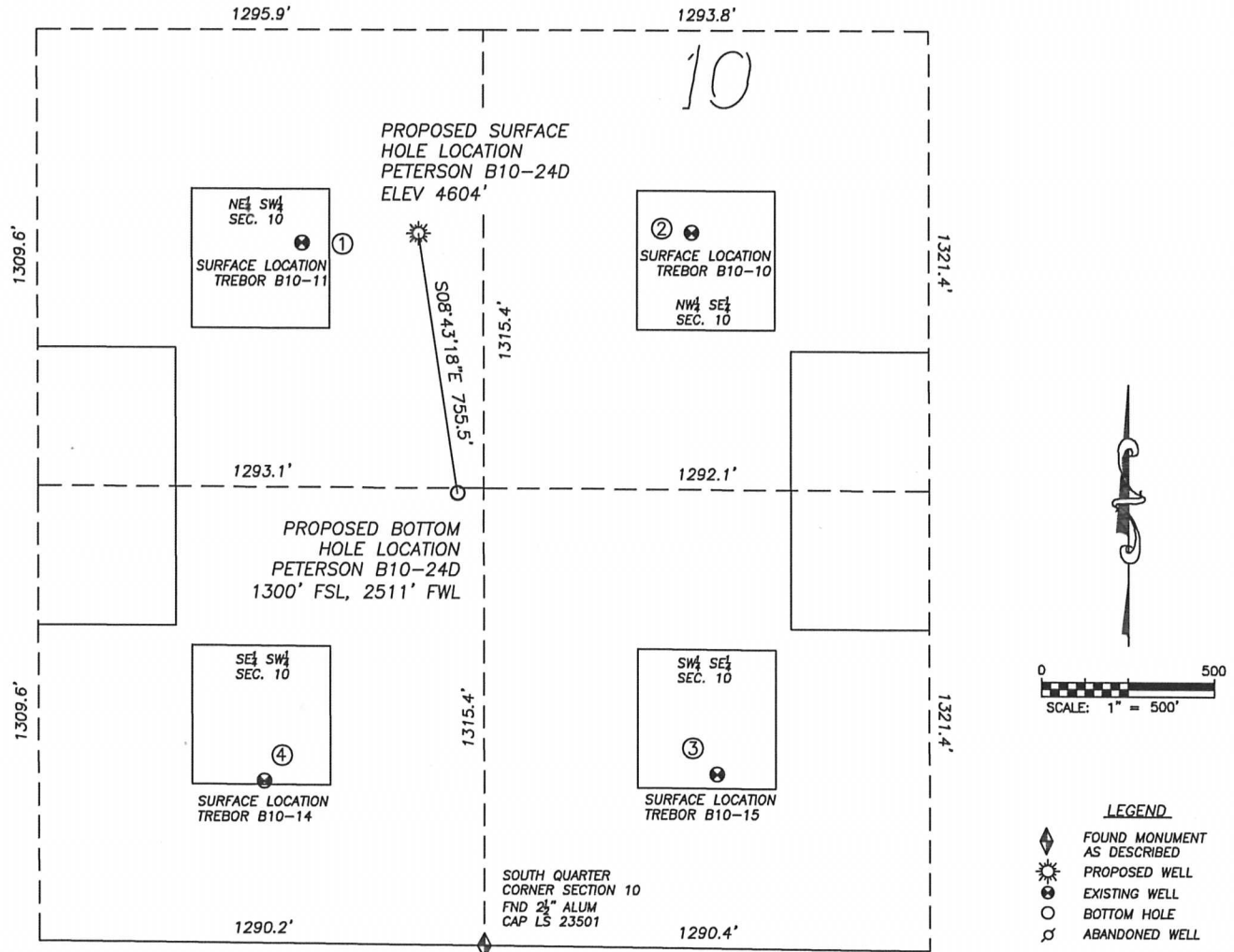
NOTICE: According to Colorado law you MUST commence any legal action based upon any defect in this W.L.C. within three years after you first discover such defect. In no event may any action based upon any such defect in this W.L.C. be commenced more than ten years from the date of the certification shown herein.

FOR AND ON BEHALF OF  
DALEY LAND SURVEYING INC.,  
Robert Daley, PLS 35597



## SITE SKETCH PETERSON B10-24D

SECTION 10, TOWNSHIP 5 NORTH, RANGE 64 WEST OF THE 6TH PRINCIPAL MERIDIAN



①  
TREBOR B10-11  
NE/SW SEC. 10  
2014' FSL, 2061' FWL  
850' NW OF PROPOSED  
BOTTOM HOLE LOCATION  
LAT. N40.41206°  
LONG. W104.53823°  
EL: 4602'  
PDOP 1.4

②  
TREBOR B10-10  
NW/SE SEC. 10  
2056' FSL, 1981' FEL  
1011' NE OF PROPOSED  
BOTTOM HOLE LOCATION  
LAT. N40.41215°  
LONG. W104.53417°  
EL: 4607'  
PDOP 1.2

③  
TREBOR B10-15  
SW/SE SEC. 10  
500' FSL, 1906' FEL  
1104' SE OF PROPOSED  
BOTTOM HOLE LOCATION  
LAT. N40.40788°  
LONG. W104.53389°  
EL: 4596'  
PDOP 2.1

④  
TREBOR B10-14  
SE/SW SEC. 10  
466' FSL, 1944' FWL  
1001' SW OF PROPOSED  
BOTTOM HOLE LOCATION  
LAT. N40.40782°  
LONG. W104.53861°  
EL: 4584'  
PDOP 1.7

## NOTES:

- THIS DOES NOT REPRESENT A BOUNDARY SURVEY.
- THE LATITUDES AND LONGITUDES SHOWN ARE REFERENCED TO NAD83.
- DATUM FOR ELEVATION IS NAVD88. ELEVATIONS ARE DERIVED FROM GPS-RTK OBSERVATIONS PROCESSED THROUGH OPUS, UTILIZING THE GEID03 MODEL.

