

Chesapeake -Rockies District

Weld

Rogers 6-62 10-1H

Rogers 6-62 10-1H

Rogers 6-62 10-1H

Plan: Design #1

Standard Planning Report

13 January, 2011

Chesapeake Operating Planning Report

Database:	Drilling Database	Local Co-ordinate Reference:	Site Rogers 6-62 10-1H
Company:	Chesapeake -Rockies District	TVD Reference:	WELL @ 0.0usft (Original Well Elev)
Project:	Weld	MD Reference:	WELL @ 0.0usft (Original Well Elev)
Site:	Rogers 6-62 10-1H	North Reference:	Grid
Well:	Rogers 6-62 10-1H	Survey Calculation Method:	Minimum Curvature
Wellbore:	Rogers 6-62 10-1H		
Design:	Design #1		

Project	Weld		
Map System:	US State Plane 1927 (Exact solution)	System Datum:	Mean Sea Level
Geo Datum:	NAD 1927 (NADCON CONUS)		
Map Zone:	Colorado North 501		

Site	Rogers 6-62 10-1H				
Site Position:		Northing:	425,772.12 ft	Latitude:	40° 29' 45.87720000 N
From:	Lat/Long	Easting:	2,330,722.54 ft	Longitude:	104° 18' 39.08880000 W
Position Uncertainty:	0.0 usft	Slot Radius:	13.200 in	Grid Convergence:	0.77 °

Well	Rogers 6-62 10-1H					
Well Position	+N/-S	0.0 usft	Northing:	425,772.12 ft	Latitude:	40° 29' 45.87715814 N
	+E/-W	0.0 usft	Easting:	2,330,722.54 ft	Longitude:	104° 18' 39.08880000 W
Position Uncertainty		0.0 usft	Wellhead Elevation:		Ground Level:	0.0 usft

Wellbore	Rogers 6-62 10-1H				
Magnetics	Model Name	Sample Date	Declination (°)	Dip Angle (°)	Field Strength (nT)
	IGRF200510	1/13/2011	8.64	67.23	53,334

Design	Design #1			
Audit Notes:				
Version:	Phase:	PROTOTYPE	Tie On Depth:	0.0
Vertical Section:	Depth From (TVD) (usft)	+N/-S (usft)	+E/-W (usft)	Direction (°)
	0.0	0.0	0.0	359.32

Plan Sections										
Measured Depth (usft)	Inclination (°)	Azimuth (°)	Vertical Depth (usft)	+N/-S (usft)	+E/-W (usft)	Dogleg Rate (°/100usft)	Build Rate (°/100usft)	Turn Rate (°/100usft)	TFO (°)	Target
0.0	0.00	0.00	0.0	0.0	0.0	0.00	0.00	0.00	0.00	
5,866.2	0.00	0.00	5,866.2	0.0	0.0	0.00	0.00	0.00	0.00	
6,767.2	90.10	359.32	6,439.1	573.9	-6.8	10.00	10.00	0.00	359.32	
10,286.1	90.10	359.32	6,433.0	4,092.6	-48.5	0.00	0.00	0.00	0.00	Rogers 6-62 10-1H

Chesapeake Operating Planning Report

Database:	Drilling Database	Local Co-ordinate Reference:	Site Rogers 6-62 10-1H
Company:	Chesapeake -Rockies District	TVD Reference:	WELL @ 0.0usft (Original Well Elev)
Project:	Weld	MD Reference:	WELL @ 0.0usft (Original Well Elev)
Site:	Rogers 6-62 10-1H	North Reference:	Grid
Well:	Rogers 6-62 10-1H	Survey Calculation Method:	Minimum Curvature
Wellbore:	Rogers 6-62 10-1H		
Design:	Design #1		

Planned Survey										
Measured Depth (usft)	Inclination (°)	Azimuth (°)	Vertical Depth (usft)	+N/-S (usft)	+E/-W (usft)	Vertical Section (usft)	Dogleg Rate (°/100usft)	Build Rate (°/100usft)	Turn Rate (°/100usft)	
0.0	0.00	0.00	0.0	0.0	0.0	0.0	0.00	0.00	0.00	0.00
100.0	0.00	0.00	100.0	0.0	0.0	0.0	0.00	0.00	0.00	0.00
200.0	0.00	0.00	200.0	0.0	0.0	0.0	0.00	0.00	0.00	0.00
300.0	0.00	0.00	300.0	0.0	0.0	0.0	0.00	0.00	0.00	0.00
400.0	0.00	0.00	400.0	0.0	0.0	0.0	0.00	0.00	0.00	0.00
500.0	0.00	0.00	500.0	0.0	0.0	0.0	0.00	0.00	0.00	0.00
600.0	0.00	0.00	600.0	0.0	0.0	0.0	0.00	0.00	0.00	0.00
700.0	0.00	0.00	700.0	0.0	0.0	0.0	0.00	0.00	0.00	0.00
800.0	0.00	0.00	800.0	0.0	0.0	0.0	0.00	0.00	0.00	0.00
900.0	0.00	0.00	900.0	0.0	0.0	0.0	0.00	0.00	0.00	0.00
1,000.0	0.00	0.00	1,000.0	0.0	0.0	0.0	0.00	0.00	0.00	0.00
1,100.0	0.00	0.00	1,100.0	0.0	0.0	0.0	0.00	0.00	0.00	0.00
1,200.0	0.00	0.00	1,200.0	0.0	0.0	0.0	0.00	0.00	0.00	0.00
1,300.0	0.00	0.00	1,300.0	0.0	0.0	0.0	0.00	0.00	0.00	0.00
1,400.0	0.00	0.00	1,400.0	0.0	0.0	0.0	0.00	0.00	0.00	0.00
1,500.0	0.00	0.00	1,500.0	0.0	0.0	0.0	0.00	0.00	0.00	0.00
1,600.0	0.00	0.00	1,600.0	0.0	0.0	0.0	0.00	0.00	0.00	0.00
1,700.0	0.00	0.00	1,700.0	0.0	0.0	0.0	0.00	0.00	0.00	0.00
1,800.0	0.00	0.00	1,800.0	0.0	0.0	0.0	0.00	0.00	0.00	0.00
1,900.0	0.00	0.00	1,900.0	0.0	0.0	0.0	0.00	0.00	0.00	0.00
2,000.0	0.00	0.00	2,000.0	0.0	0.0	0.0	0.00	0.00	0.00	0.00
2,100.0	0.00	0.00	2,100.0	0.0	0.0	0.0	0.00	0.00	0.00	0.00
2,200.0	0.00	0.00	2,200.0	0.0	0.0	0.0	0.00	0.00	0.00	0.00
2,300.0	0.00	0.00	2,300.0	0.0	0.0	0.0	0.00	0.00	0.00	0.00
2,400.0	0.00	0.00	2,400.0	0.0	0.0	0.0	0.00	0.00	0.00	0.00
2,500.0	0.00	0.00	2,500.0	0.0	0.0	0.0	0.00	0.00	0.00	0.00
2,600.0	0.00	0.00	2,600.0	0.0	0.0	0.0	0.00	0.00	0.00	0.00
2,700.0	0.00	0.00	2,700.0	0.0	0.0	0.0	0.00	0.00	0.00	0.00
2,800.0	0.00	0.00	2,800.0	0.0	0.0	0.0	0.00	0.00	0.00	0.00
2,900.0	0.00	0.00	2,900.0	0.0	0.0	0.0	0.00	0.00	0.00	0.00
3,000.0	0.00	0.00	3,000.0	0.0	0.0	0.0	0.00	0.00	0.00	0.00
3,100.0	0.00	0.00	3,100.0	0.0	0.0	0.0	0.00	0.00	0.00	0.00
3,200.0	0.00	0.00	3,200.0	0.0	0.0	0.0	0.00	0.00	0.00	0.00
3,300.0	0.00	0.00	3,300.0	0.0	0.0	0.0	0.00	0.00	0.00	0.00
3,400.0	0.00	0.00	3,400.0	0.0	0.0	0.0	0.00	0.00	0.00	0.00
3,500.0	0.00	0.00	3,500.0	0.0	0.0	0.0	0.00	0.00	0.00	0.00
3,600.0	0.00	0.00	3,600.0	0.0	0.0	0.0	0.00	0.00	0.00	0.00
3,700.0	0.00	0.00	3,700.0	0.0	0.0	0.0	0.00	0.00	0.00	0.00
3,800.0	0.00	0.00	3,800.0	0.0	0.0	0.0	0.00	0.00	0.00	0.00
3,900.0	0.00	0.00	3,900.0	0.0	0.0	0.0	0.00	0.00	0.00	0.00
4,000.0	0.00	0.00	4,000.0	0.0	0.0	0.0	0.00	0.00	0.00	0.00
4,100.0	0.00	0.00	4,100.0	0.0	0.0	0.0	0.00	0.00	0.00	0.00
4,200.0	0.00	0.00	4,200.0	0.0	0.0	0.0	0.00	0.00	0.00	0.00
4,300.0	0.00	0.00	4,300.0	0.0	0.0	0.0	0.00	0.00	0.00	0.00
4,400.0	0.00	0.00	4,400.0	0.0	0.0	0.0	0.00	0.00	0.00	0.00
4,500.0	0.00	0.00	4,500.0	0.0	0.0	0.0	0.00	0.00	0.00	0.00
4,600.0	0.00	0.00	4,600.0	0.0	0.0	0.0	0.00	0.00	0.00	0.00
4,700.0	0.00	0.00	4,700.0	0.0	0.0	0.0	0.00	0.00	0.00	0.00
4,800.0	0.00	0.00	4,800.0	0.0	0.0	0.0	0.00	0.00	0.00	0.00
4,900.0	0.00	0.00	4,900.0	0.0	0.0	0.0	0.00	0.00	0.00	0.00
5,000.0	0.00	0.00	5,000.0	0.0	0.0	0.0	0.00	0.00	0.00	0.00
5,100.0	0.00	0.00	5,100.0	0.0	0.0	0.0	0.00	0.00	0.00	0.00
5,200.0	0.00	0.00	5,200.0	0.0	0.0	0.0	0.00	0.00	0.00	0.00
5,300.0	0.00	0.00	5,300.0	0.0	0.0	0.0	0.00	0.00	0.00	0.00

Chesapeake Operating Planning Report

Database:	Drilling Database	Local Co-ordinate Reference:	Site Rogers 6-62 10-1H
Company:	Chesapeake -Rockies District	TVD Reference:	WELL @ 0.0usft (Original Well Elev)
Project:	Weld	MD Reference:	WELL @ 0.0usft (Original Well Elev)
Site:	Rogers 6-62 10-1H	North Reference:	Grid
Well:	Rogers 6-62 10-1H	Survey Calculation Method:	Minimum Curvature
Wellbore:	Rogers 6-62 10-1H		
Design:	Design #1		

Planned Survey									
Measured Depth (usft)	Inclination (°)	Azimuth (°)	Vertical Depth (usft)	+N/-S (usft)	+E/-W (usft)	Vertical Section (usft)	Dogleg Rate (°/100usft)	Build Rate (°/100usft)	Turn Rate (°/100usft)
5,400.0	0.00	0.00	5,400.0	0.0	0.0	0.0	0.00	0.00	0.00
5,500.0	0.00	0.00	5,500.0	0.0	0.0	0.0	0.00	0.00	0.00
5,600.0	0.00	0.00	5,600.0	0.0	0.0	0.0	0.00	0.00	0.00
5,700.0	0.00	0.00	5,700.0	0.0	0.0	0.0	0.00	0.00	0.00
5,800.0	0.00	0.00	5,800.0	0.0	0.0	0.0	0.00	0.00	0.00
5,866.2	0.00	0.00	5,866.2	0.0	0.0	0.0	0.00	0.00	0.00
5,900.0	3.38	359.32	5,900.0	1.0	0.0	1.0	10.00	10.00	0.00
6,000.0	13.38	359.32	5,998.8	15.6	-0.2	15.6	10.00	10.00	0.00
6,100.0	23.38	359.32	6,093.6	47.0	-0.6	47.0	10.00	10.00	0.00
6,200.0	33.38	359.32	6,181.4	94.5	-1.1	94.5	10.00	10.00	0.00
6,300.0	43.38	359.32	6,259.7	156.5	-1.9	156.5	10.00	10.00	0.00
6,400.0	53.38	359.32	6,326.0	231.2	-2.7	231.2	10.00	10.00	0.00
6,500.0	63.38	359.32	6,378.4	316.2	-3.7	316.2	10.00	10.00	0.00
6,600.0	73.38	359.32	6,415.2	409.1	-4.8	409.1	10.00	10.00	0.00
6,700.0	83.38	359.32	6,435.3	506.9	-6.0	506.9	10.00	10.00	0.00
6,767.2	90.10	359.32	6,439.1	573.9	-6.8	574.0	10.00	10.00	0.00
6,800.0	90.10	359.32	6,439.1	606.7	-7.2	606.8	0.00	0.00	0.00
6,900.0	90.10	359.32	6,438.9	706.7	-8.4	706.8	0.00	0.00	0.00
7,000.0	90.10	359.32	6,438.7	806.7	-9.6	806.8	0.00	0.00	0.00
7,100.0	90.10	359.32	6,438.6	906.7	-10.7	906.8	0.00	0.00	0.00
7,200.0	90.10	359.32	6,438.4	1,006.7	-11.9	1,006.8	0.00	0.00	0.00
7,300.0	90.10	359.32	6,438.2	1,106.7	-13.1	1,106.8	0.00	0.00	0.00
7,400.0	90.10	359.32	6,438.0	1,206.7	-14.3	1,206.8	0.00	0.00	0.00
7,500.0	90.10	359.32	6,437.9	1,306.7	-15.5	1,306.8	0.00	0.00	0.00
7,600.0	90.10	359.32	6,437.7	1,406.7	-16.7	1,406.8	0.00	0.00	0.00
7,700.0	90.10	359.32	6,437.5	1,506.7	-17.9	1,506.8	0.00	0.00	0.00
7,800.0	90.10	359.32	6,437.3	1,606.6	-19.0	1,606.8	0.00	0.00	0.00
7,900.0	90.10	359.32	6,437.2	1,706.6	-20.2	1,706.8	0.00	0.00	0.00
8,000.0	90.10	359.32	6,437.0	1,806.6	-21.4	1,806.8	0.00	0.00	0.00
8,100.0	90.10	359.32	6,436.8	1,906.6	-22.6	1,906.8	0.00	0.00	0.00
8,200.0	90.10	359.32	6,436.6	2,006.6	-23.8	2,006.8	0.00	0.00	0.00
8,300.0	90.10	359.32	6,436.5	2,106.6	-25.0	2,106.8	0.00	0.00	0.00
8,400.0	90.10	359.32	6,436.3	2,206.6	-26.1	2,206.8	0.00	0.00	0.00
8,500.0	90.10	359.32	6,436.1	2,306.6	-27.3	2,306.8	0.00	0.00	0.00
8,600.0	90.10	359.32	6,435.9	2,406.6	-28.5	2,406.8	0.00	0.00	0.00
8,700.0	90.10	359.32	6,435.8	2,506.6	-29.7	2,506.8	0.00	0.00	0.00
8,800.0	90.10	359.32	6,435.6	2,606.6	-30.9	2,606.8	0.00	0.00	0.00
8,900.0	90.10	359.32	6,435.4	2,706.6	-32.1	2,706.8	0.00	0.00	0.00
9,000.0	90.10	359.32	6,435.2	2,806.6	-33.3	2,806.8	0.00	0.00	0.00
9,100.0	90.10	359.32	6,435.1	2,906.5	-34.4	2,906.8	0.00	0.00	0.00
9,200.0	90.10	359.32	6,434.9	3,006.5	-35.6	3,006.8	0.00	0.00	0.00
9,300.0	90.10	359.32	6,434.7	3,106.5	-36.8	3,106.8	0.00	0.00	0.00
9,400.0	90.10	359.32	6,434.5	3,206.5	-38.0	3,206.8	0.00	0.00	0.00
9,500.0	90.10	359.32	6,434.4	3,306.5	-39.2	3,306.7	0.00	0.00	0.00
9,600.0	90.10	359.32	6,434.2	3,406.5	-40.4	3,406.7	0.00	0.00	0.00
9,700.0	90.10	359.32	6,434.0	3,506.5	-41.5	3,506.7	0.00	0.00	0.00
9,800.0	90.10	359.32	6,433.8	3,606.5	-42.7	3,606.7	0.00	0.00	0.00
9,900.0	90.10	359.32	6,433.7	3,706.5	-43.9	3,706.7	0.00	0.00	0.00
10,000.0	90.10	359.32	6,433.5	3,806.5	-45.1	3,806.7	0.00	0.00	0.00
10,100.0	90.10	359.32	6,433.3	3,906.5	-46.3	3,906.7	0.00	0.00	0.00
10,200.0	90.10	359.32	6,433.2	4,006.5	-47.5	4,006.7	0.00	0.00	0.00
10,286.1	90.10	359.32	6,433.0	4,092.6	-48.5	4,092.9	0.00	0.00	0.00

Chesapeake Operating

Planning Report

Database:	Drilling Database	Local Co-ordinate Reference:	Site Rogers 6-62 10-1H
Company:	Chesapeake -Rockies District	TVD Reference:	WELL @ 0.0usft (Original Well Elev)
Project:	Weld	MD Reference:	WELL @ 0.0usft (Original Well Elev)
Site:	Rogers 6-62 10-1H	North Reference:	Grid
Well:	Rogers 6-62 10-1H	Survey Calculation Method:	Minimum Curvature
Wellbore:	Rogers 6-62 10-1H		
Design:	Design #1		

Design Targets									
Target Name	Dip Angle	Dip Dir.	TVD	+N/-S	+E/-W	Northing	Easting	Latitude	Longitude
- hit/miss target	(°)	(°)	(usft)	(usft)	(usft)	(ft)	(ft)		
- Shape									
Rogers 6-62 10-1H	0.00	0.00	6,433.0	4,092.6	-48.5	429,864.75	2,330,674.05	0° 30' 26.32315818 N	4° 18' 39.00600000 W
- plan hits target center									
- Point									

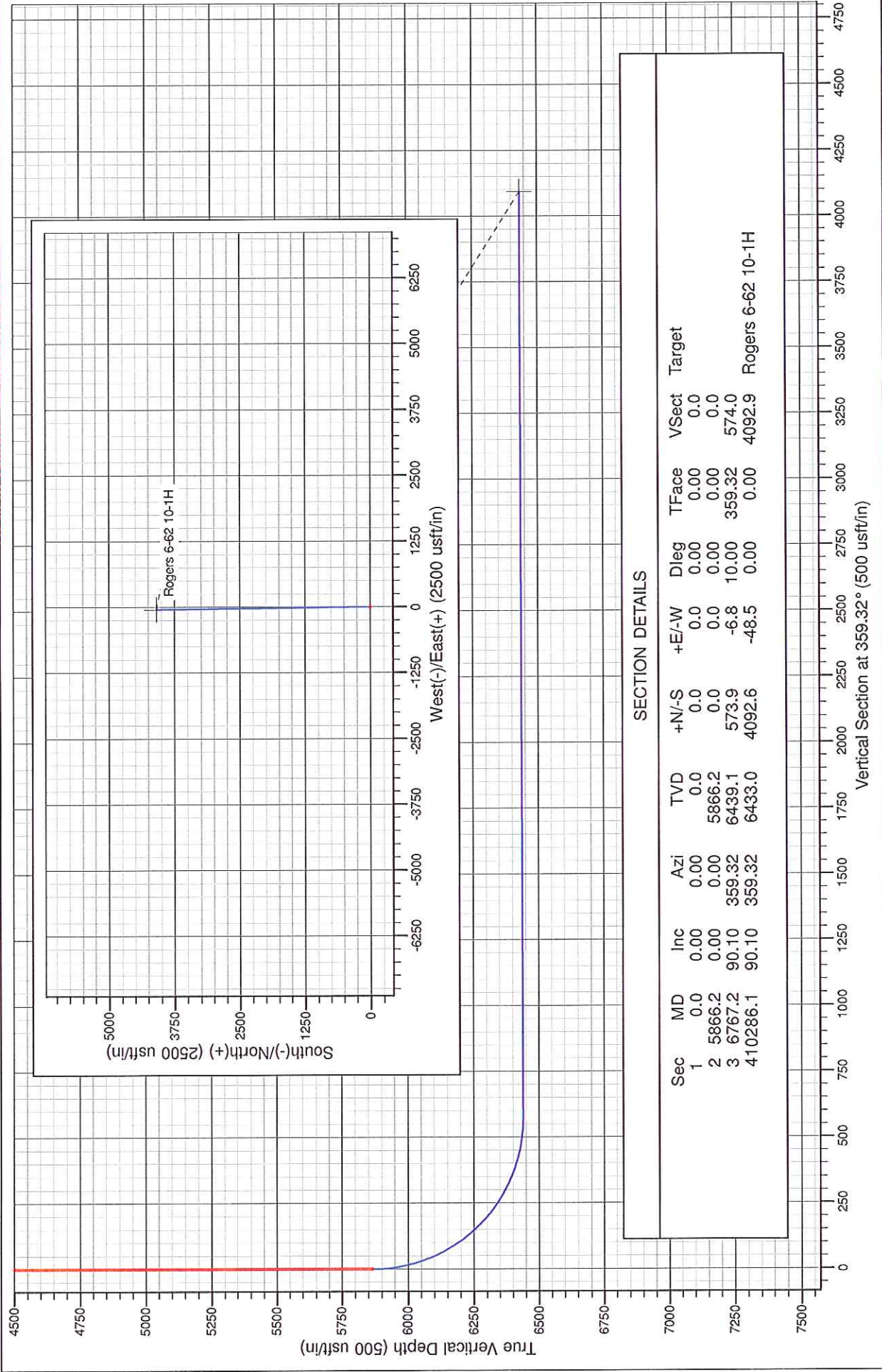
Project: Weld

Site: Rogers 6-62 10-1H
Well: Rogers 6-62 10-1H
Wellbore: Rogers 6-62 10-1H
Design: Design #1

PROJECT DETAILS: Weld

Geodetic System: US State Plane 1927 (Exact solution)
Datum: NAD 1927 (NADCON CONUS)
Ellipsoid: Clarke 1866
Zone: Colorado North 501

System Datum: Mean Sea Level



Vertical Section at 359.32° (500 usft/in)