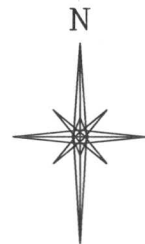
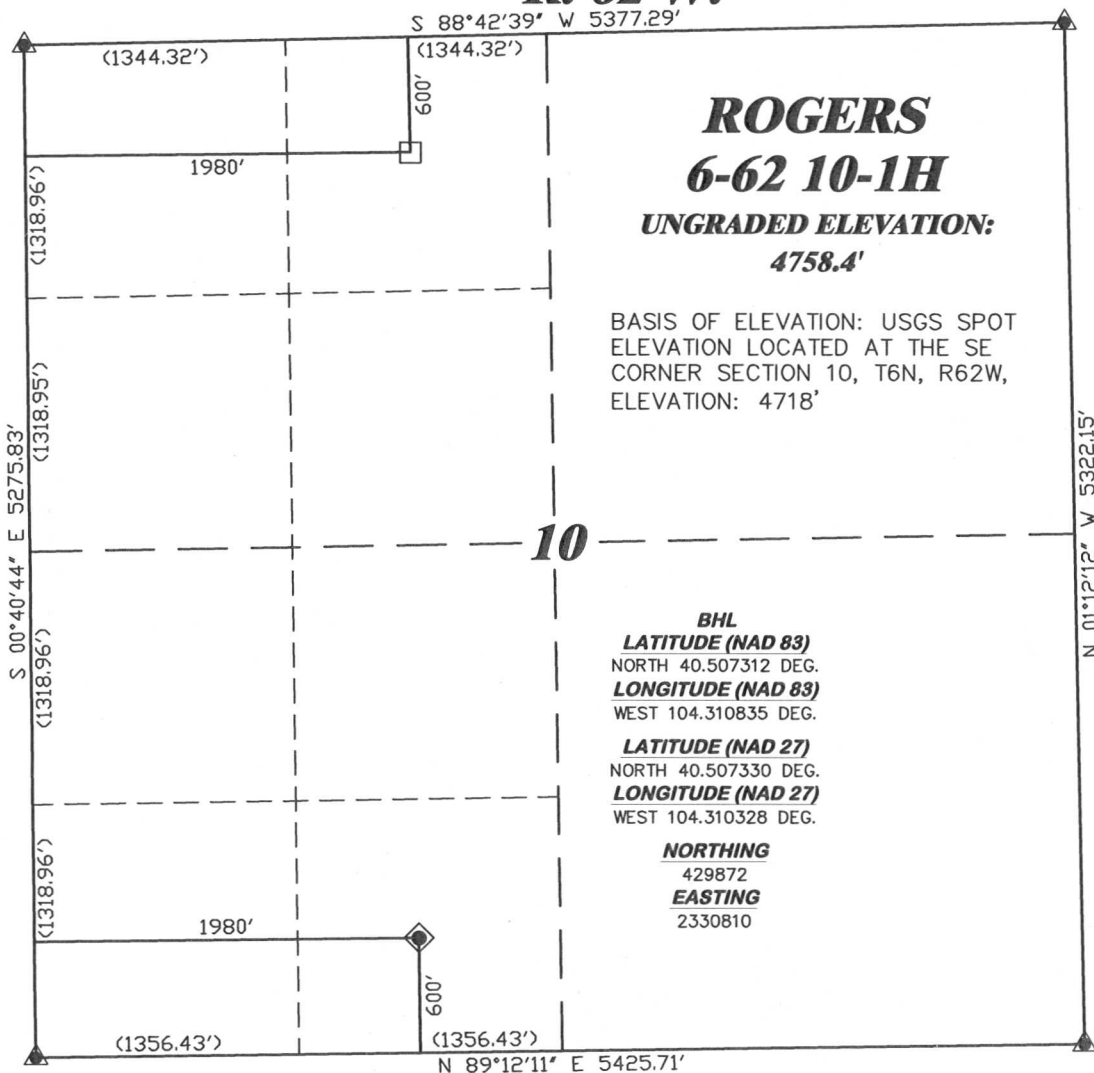


R. 62 W.



SCALE 1" = 1000'

T. 6 N.

LATITUDE (NAD 83)

NORTH 40.496077 DEG.

LONGITUDE (NAD 83)

WEST 104.310858 DEG.

LATITUDE (NAD 27)

NORTH 40.496095 DEG.

LONGITUDE (NAD 27)

WEST 104.310351 DEG.

NORTHING

425779.61

EASTING

2330858.68

BASIS OF BEARING/DATUM

SPCS CO NORTH NAD 27
BASED ON DRG TRIANGULATION
STATION "10-6-62"

ROGERS
6-62 10-1H
UNGRADED ELEVATION:
4758.4'

BASIS OF ELEVATION: USGS SPOT
ELEVATION LOCATED AT THE SE
CORNER SECTION 10, T6N, R62W,
ELEVATION: 4718'

BHL

LATITUDE (NAD 83)

NORTH 40.507312 DEG.

LONGITUDE (NAD 83)

WEST 104.310835 DEG.

LATITUDE (NAD 27)

NORTH 40.507330 DEG.

LONGITUDE (NAD 27)

WEST 104.310328 DEG.

NORTHING

429872

EASTING

2330810

NOTES

PRAIRIE LANDS

NO EXISTING FEATURES WITHIN
400' RADIUS OF WELL SITE.

GPS OPERATOR PAUL ORME

OBSERVED A PDOP OF 2.2.

ALL GPS OBSERVATIONS ARE IN
COMPLIANCE WITH COGCC RULE No.215.

1000 500 0 1000 2000



SCALE

FEET

SURVEYOR'S STATEMENT

I, CLEMENT R. WILLIAMS, OF ROCK SPRINGS, WYOMING, HEREBY STATE: THIS MAP WAS MADE FROM NOTES TAKEN DURING AN ACTUAL FIELD SURVEY DONE UNDER MY DIRECT SUPERVISION ON JANUARY 3, 2011 AND THAT THIS PLAT CORRECTLY SHOWS THE LOCATION OF ROGERS 6-62 10-1H AS STAKED ON THE GROUND.

LEGEND

- ◆ WELL LOCATION
- BOTTOM HOLE LOC. (APPROX)
- FOUND MONUMENT
- ▲ PREVIOUSLY FOUND MONUMENT
- CALCULATED CORNER



RIFFIN & ASSOCIATES, INC.

1414 ELK ST., ROCK SPRINGS, WY 82901

DRAWN: 1/4/11 - JMB

SCALE: 1" = 1000'

REVISED: NA

DRG JOB No. 18272

EXHIBIT 1

PLAT OF DRILLING LOCATION
FOR
CHESAPEAKE ENERGY, LLC.

600' F/SL & 1980' F/WL, SESW, SECTION 10,
T. 6 N., R. 62 W., 6th P.M.
WELD COUNTY, COLORADO