

# T8S, R96W, 6th P.M.

ENCANA OIL & GAS (USA) INC

WELL LOCATION, 15-12H2 (D140U),  
 LOCATED AS SHOWN IN THE NW 1/4 NW  
 1/4 OF SECTION 14, T8S, R96W, 6th P.M.  
 MESA COUNTY, COLORADO.



**NOTES:**

1. Well footages are measured at right angles to the Section Lines.
2. Bearings are based on Global Positioning Satellite observations.
3. G.P.S. Operator: C.D. Slauch, (PDOP) = 2.1

THIS IS TO CERTIFY THAT THE ABOVE PLAT WAS PREPARED FROM FIELD NOTES OF BOTH SURVEYS MADE BY ME OR UNDER MY SUPERVISION. THE LOCATION HAS BEEN STAKED ON THE GROUND AND SHOWN ON THE PLAT, AND THAT THE SAME ARE TRUE AND CORRECT TO THE BEST OF MY KNOWLEDGE AND BELIEF.

*John L. C. S.*  
 # 30125  
 REGISTERED LAND SURVEYOR  
 REGISTRATION NO. 30125  
 STATE OF COLORADO

**TRI STATE LAND SURVEYING & CONSULTING**

180 NORTH VERNAL AVE. - VERNAL, UTAH 84078  
 (435) 781-2501

DATE SURVEYED: 03-25-10	SURVEYED BY: C.D.S.	SHEET <b>2a</b> OF 11
DATE DRAWN: 09-22-10	DRAWN BY: L.C.S.	
REVISED: L.C.S. 12-22-10	SCALE: 1" = 1000'	

1997 Alum. Cap (LS 27613)

S89°53'W - 80.03 (G.L.O.)

S89°28'43"W - 2683.95' (Meas.) S87°29'02"W - 2645.86' (Meas.)

See Sheet 2aa

S57°11'12"W 5999.31' (To Bottom Hole)

405' 590'

Top of Hole

**WELL LOCATION:  
 15-12H2 (D140U)**

ELEV. EXISTING GRADED GROUND = 5963'

91.16' 831.16' 5121.755'E

607'

Top of Production Interval

Corner Re-Established From Bearing Tree (Not Set)

Set Stone

7333.60' (Meas.) N02°18'35"W

Alum. Cap. PLS 27613

1329.13' (Meas.) N02°21'15"W

Set Stone

2603.31' (Meas.) N02°45'50"E

Set Stone

14

IMPROVEMENT NOTE:  
 See addendum to legal plat (sheet 2c) for visible improvements within 400' of the proposed well head.

NORTH (G.L.O.) S65°00'39"W 5759.54' (To Bottom Hole)

N01°40'12"E - 5221.86' (Meas.)

1965 Brass Cap

S88°03'33"W - 2638.47' (Meas.) S89°47'45"W - 2825.19' (Meas.)

N89°53'W - 80.08 (G.L.O.)

**NAD 83 (SURFACE LOCATION)**

LATITUDE = 39°21'20.52" (39.355701)  
 LONGITUDE = 108°05'03.12" (108.084201)

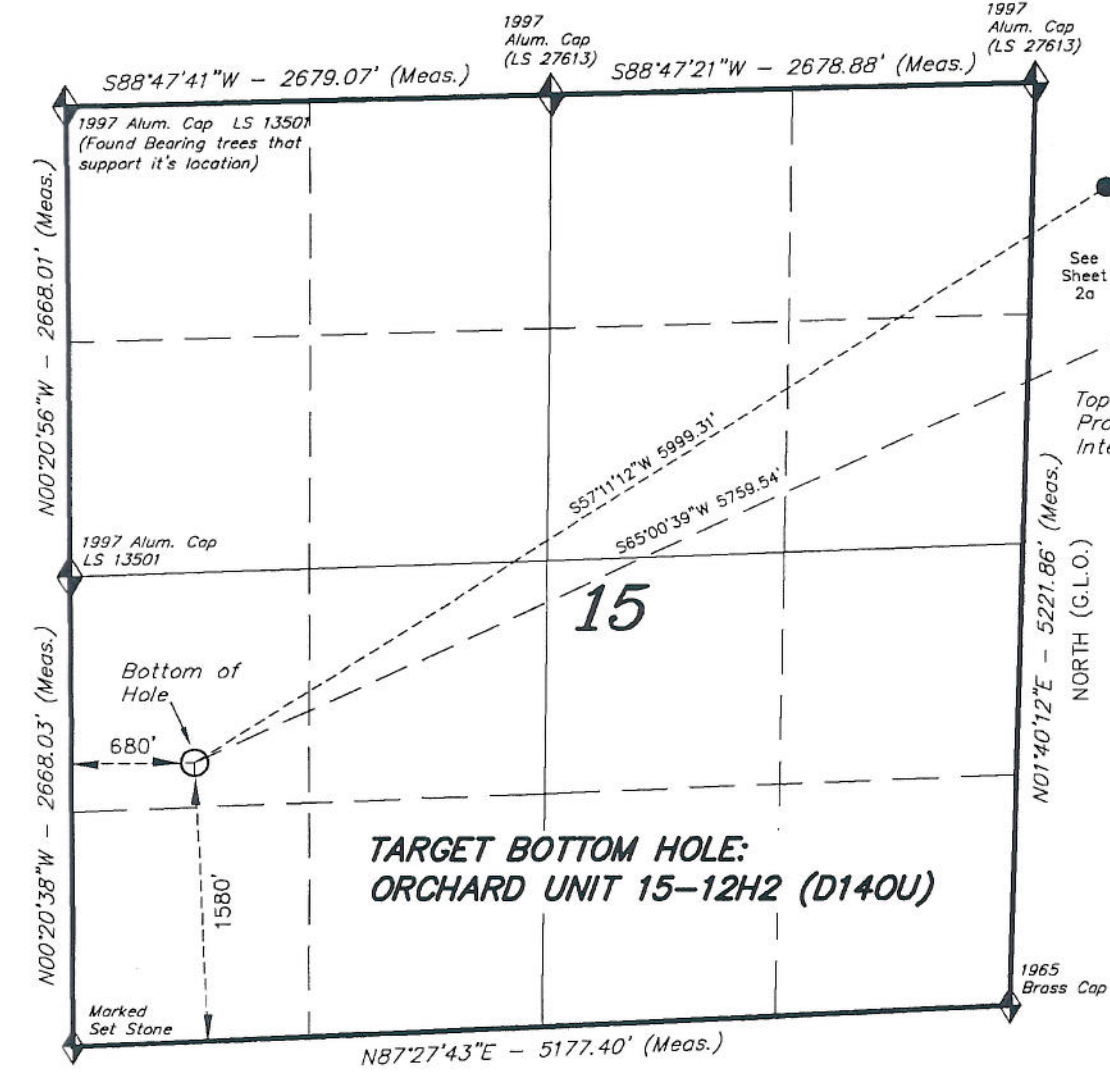
◆ = SECTION CORNERS LOCATED

Basis of elevation is the McCary Station.  
 39°22'27.10" N Lat. & 108°09'44.37" W Long.  
 (NAD 83). El. 5175' (NAVD88).

# T8S, R96W, 6th P.M.

ENCANA OIL & GAS (USA) INC

TARGET BOTTOM HOLE, ORCHARD UNIT 15-12H2 (D140U), LOCATED AS SHOWN IN THE NW 1/4 SW 1/4 OF SECTION 15, T8S, R96W, 6th P.M. MESA COUNTY, COLORADO.



1. Well footages are measured at right angles to the Section Lines.
2. Bearings are based on Global Positioning Satellite observations.

THIS IS TO CERTIFY THAT THE ABOVE PLAT WAS PREPARED FROM FIELD NOTES OF A FIELD SURVEY MADE BY ME OR UNDER MY SUPERVISION. THE LOCATION HAS BEEN STAKED ON THE GROUND AS SHOWN ON THE PLAT, AND THAT THE SAME ARE TRUE AND CORRECT TO THE BEST OF MY KNOWLEDGE AND BELIEF.

*[Signature]*  
 REGISTERED LAND SURVEYOR  
 REGISTRATION NO. 30125  
 STATE OF COLORADO

<b>TRI STATE LAND SURVEYING &amp; CONSULTING</b>		
180 NORTH VERNAL AVE. - VERNAL, UTAH 84078		
DATE SURVEYED: 03-25-10	SURVEYED BY: C.D.S.	SHEET 2aa OF 11
DATE DRAWN: 09-22-10	DRAWN BY: L.C.S.	
REVISED: L.C.S. 10-18-10	SCALE: 1" = 1000'	

◆ = SECTION CORNERS LOCATED

Basis of elevation is the McCary Station.  
 39°22'27.10" N Lat. & 108°09'44.37" W  
 Long. (NAD 83). El. 5175' (NAVD88).