

DALEY LAND SURVEYING, INC.

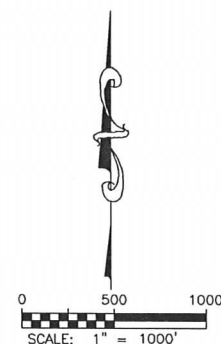
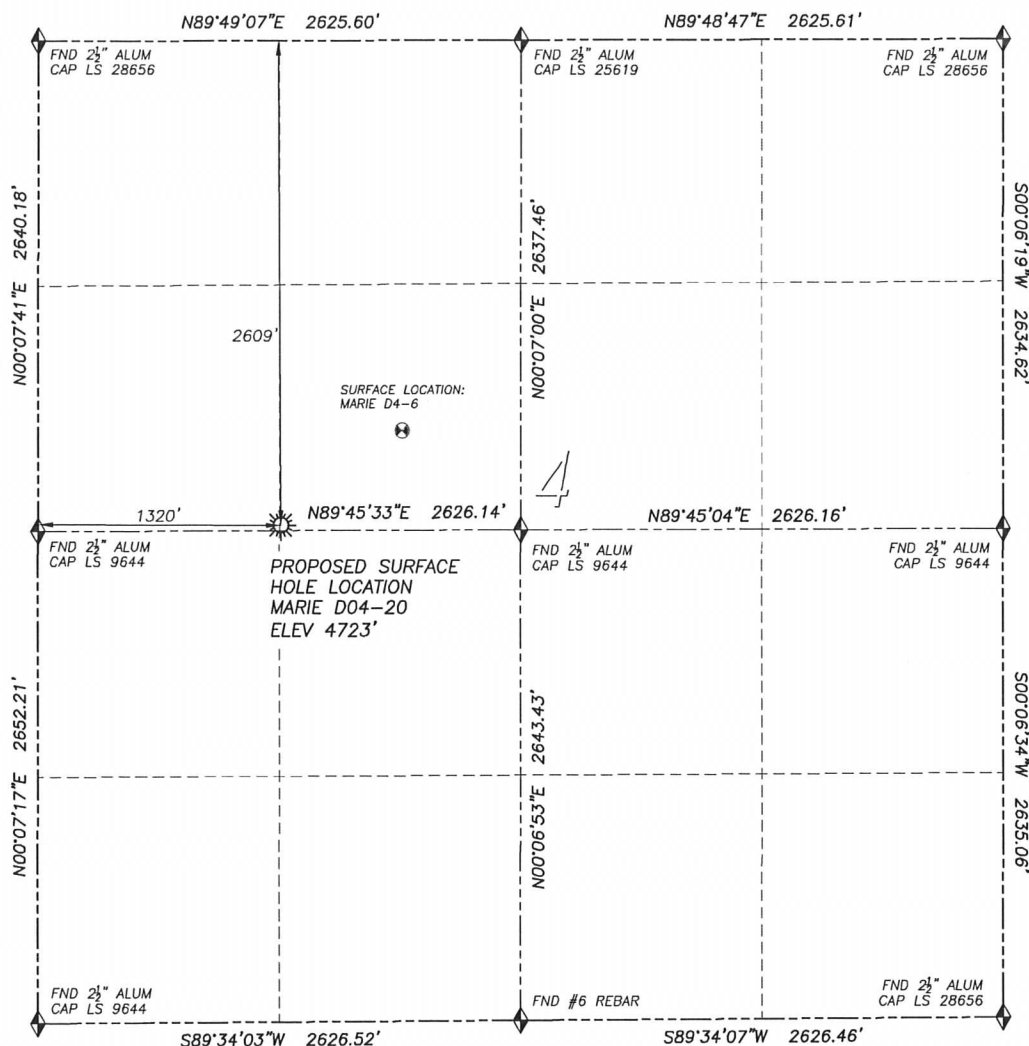
PARKER, CO. 80134

303 953 9841

WELL LOCATION CERTIFICATE

MARIE D04-20

SECTION 4, TOWNSHIP 3 NORTH, RANGE 64 WEST OF THE 6TH PRINCIPAL MERIDIAN



LEGEND

- ◆ FOUND MONUMENT AS DESCRIBED
- ☀ PROPOSED WELL
- ⊙ EXISTING WELL
- BOTTOM HOLE
- ⊘ ABANDONED WELL

NAD 83 LATITUDE AND LONGITUDE

MARIE D04-20 SURFACE HOLE:

LATITUDE: N40.25458°
 LONGITUDE: W104.56068°
 ELEVATION: 4723'
 FOOTAGE: 2609' FNL, 1320' FWL
 PDOP: 1.8
 QTR/QTR: SE4/NW4
 PROP LINE: 120' ± NORTH

NEAREST EXISTING WELL:

MARIE D4-6 SURFACE HOLE
 LATITUDE: N40.25598°
 LONGITUDE: W104.55831°
 ELEVATION: 4718'
 834' NORTHEAST

IN ACCORDANCE WITH A REQUEST FROM BRIAN DeROSE OF NOBLE ENERGY INC., DALEY LAND SURVEYING, INC. HAS DETERMINED THE SURFACE LOCATION OF THE MARIE D04-20 WELL TO BE 2609' FNL, 1320' FWL, AS MEASURED AT NINETY (90) DEGREES FROM THE SECTION LINES OF SECTION 4, TOWNSHIP 3 NORTH, RANGE 64 WEST OF THE 6TH PRINCIPAL MERIDIAN, WELD COUNTY, COLORADO.

I HEREBY CERTIFY THAT THIS WELL LOCATION CERTIFICATE WAS PREPARED BY ME OR UNDER MY DIRECT SUPERVISION, THAT THE WORK WAS COMPLETED ON 10/20/2010 FOR AND ON BEHALF OF NOBLE ENERGY, INC., AND THAT THIS MAP DOES NOT REPRESENT A BOUNDARY SURVEY, IT IS NOT A LAND SURVEY PLAT OR AN IMPROVEMENT SURVEY PLAT AND IT IS NOT TO BE RELIED UPON FOR THE ESTABLISHMENT OF FENCE, BUILDING OR OTHER FUTURE IMPROVEMENT LINES.

NOTES:

- 1) BEARINGS FOR THIS MAP ARE ASSUMED AND BASED UPON GPS OBSERVATIONS MADE BETWEEN MONUMENTS LOCATED AT THE NORTHWEST CORNER AND WEST QUARTER CORNER OF SECTION 4, T.3N., R.64W.
- 2) HORIZONTAL DATUM IS NAD83.
- 3) VERTICAL DATUM IS NAVD88. ELEVATIONS ARE DERIVED FROM GPS OBSERVATIONS PROCESSED THROUGH OPUS, UTILIZING THE GEOID03 MODEL.
- 4) SEE LOCATION DRAWING FOR VISIBLE IMPROVEMENTS WITHIN 600' OF PROPOSED SURFACE HOLE LOCATION.
- 5) SURFACE USE: AGRICULTURAL.

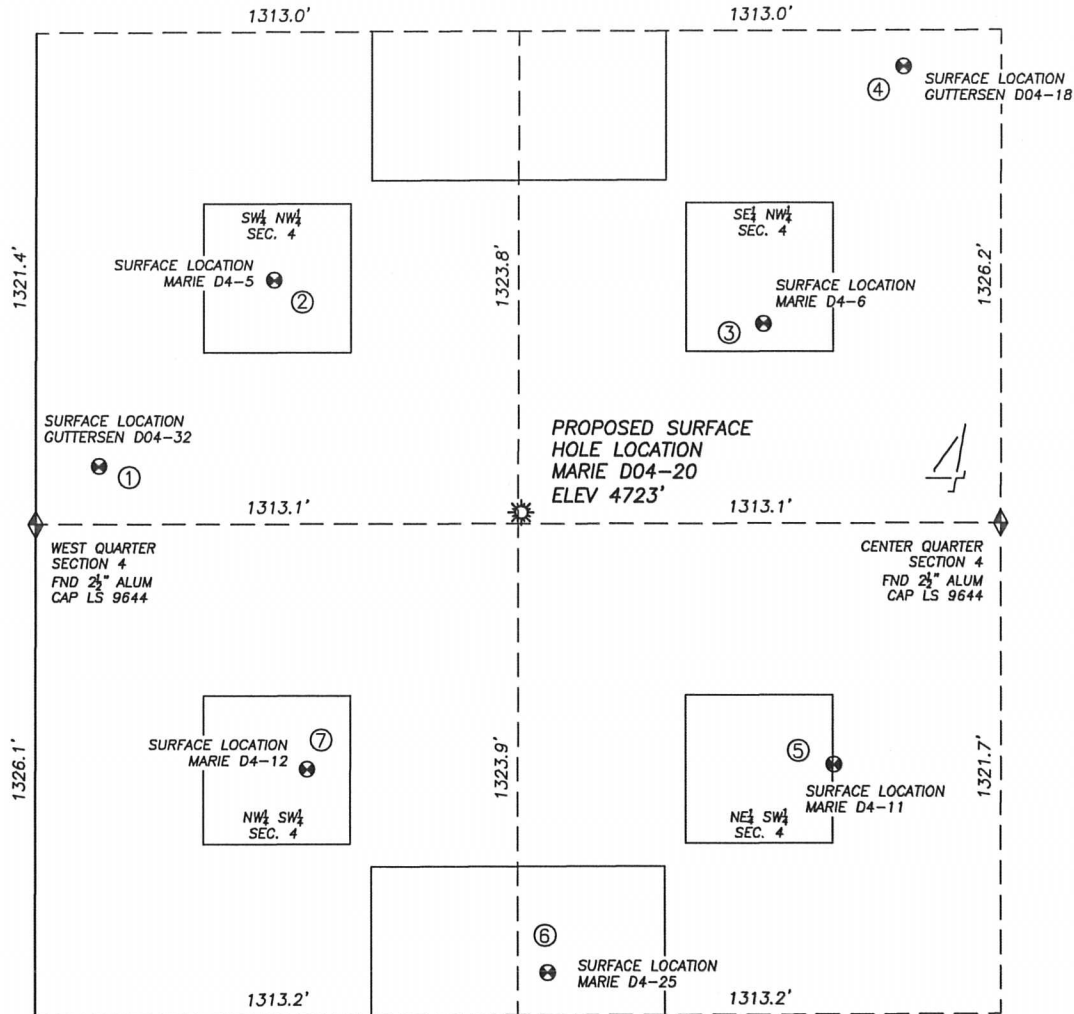
NOTICE: According to Colorado law you MUST commence any legal action based upon any defect in this W.L.C. within three years after you first discover such defect. In no event may any action based upon any such defect in this W.L.C. be commenced more than ten years from the date of the certification shown hereon.



FOR AND ON BEHALF OF
 DALEY LAND SURVEYING INC.,
 Robert Daley, PLS 35597

SITE SKETCH MARIE D04-20

SECTION 4, TOWNSHIP 3 NORTH, RANGE 64 WEST OF THE 6TH PRINCIPAL MERIDIAN



0 500
SCALE: 1" = 500'

LEGEND

- ▲ FOUND MONUMENT AS DESCRIBED
- ☼ PROPOSED WELL
- ⊙ EXISTING WELL
- BOTTOM HOLE
- ⊘ ABANDONED WELL

①

GUTTERSEN D04-32

SW/NW SEC. 4
2484' FNL, 170' FWL
1156' W OF PROPOSED
SURFACE HOLE LOCATION
LAT. N40.25492'
LONG. W104.56479'
EL: 4746'
PDOP 1.2

②

MARIE D4-5

SW/NW SEC. 4
1984' FNL, 647' FWL
916' NW OF PROPOSED
SURFACE HOLE LOCATION
LAT. N40.25629'
LONG. W104.56308'
EL: 4735'
PDOP 1.4

③

MARIE D4-6

SE/NW SEC. 4
2101' FNL, 1980' FWL
834' NE OF PROPOSED
SURFACE HOLE LOCATION
LAT. N40.25598'
LONG. W104.55831'
EL: 4718'
PDOP 2.0

④

GUTTERSEN D04-18

SE/NW SEC. 4
1410' FNL, 2360' FWL
1591' NE OF PROPOSED
SURFACE HOLE LOCATION
LAT. N40.25787'
LONG. W104.55693'
EL: 4717'
PDOP 2.0

⑤

MARIE D4-11

NE/SW SEC. 4
1999' FSL, 2172' FWL
1087' SE OF PROPOSED
SURFACE HOLE LOCATION
LAT. N40.25272'
LONG. W104.55764'
EL: 4718'
PDOP 1.8

⑥

MARIE D4-25

NE/SW SEC. 4
1439' FSL, 1394' FWL
1204' S OF PROPOSED
SURFACE HOLE LOCATION
LAT. N40.25118'
LONG. W104.56043'
EL: 4720'
PDOP 2.0

⑦

MARIE D4-12

NW/SW SEC. 4
1989' FSL, 738' FWL
906' SW OF PROPOSED
SURFACE HOLE LOCATION
LAT. N40.25268'
LONG. W104.56277'
EL: 4721'
PDOP 1.4

NOTES:

- 1) THIS DOES NOT REPRESENT A BOUNDARY SURVEY
- 2) THE LATITUDES AND LONGITUDES SHOWN ARE REFERENCED TO NAD83
- 3) DATUM FOR ELEVATION IS NAVD88. ELEVATIONS ARE DERIVED FROM GPS-RTK OBSERVATIONS PROCESSED THROUGH OPUS, UTILIZING THE GEOID03 MODEL