



Lat40°, LLC

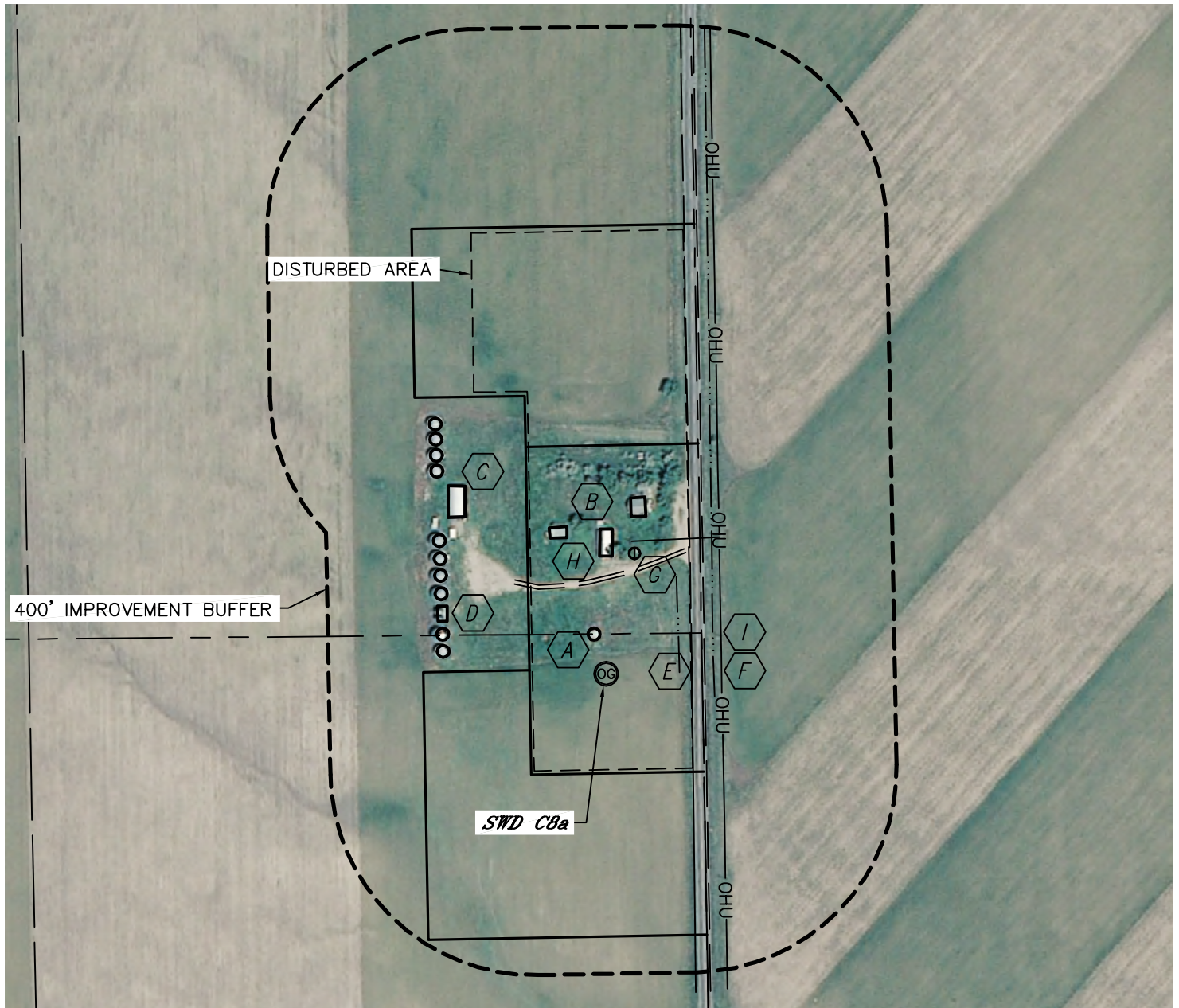
1635 Foxtrail Drive, Suite 325

Loveland, CO 80538






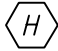



LOCATION DRAWING

SWD C8a

SECTION: 29
TOWNSHIP: 11N
RANGE: 62W



IMPROVEMENTS:

- | | | | |
|--|--|---|----------------------------------|
|  A | GRAIN SILO 70' NW
(TO BE REMOVED) |  F | OVERHEAD UTILITY 227' E, 264' NE |
|  B | BUILDING 231' N (HOUSE), 278' N, 313' N
(TO BE REMOVED) |  G | IRRIGATION WELL 243' N |
|  C | BUILDING 414' NW |  H | FIELD ROAD 183' N |
|  D | ROW OF GRAIN SILOS 311' W |  I | BARROW DITCH 144' E, 211' E |
|  E | COUNTY ROAD 77 168' E | | |

NEAREST: BUILDING 231' N (HOUSE), PUBLIC ROAD 168' E (CR 77),
ABOVE GROUND UTILITY 227' E, RAILROAD 5280'+, PROPERTY LINE 150' W

