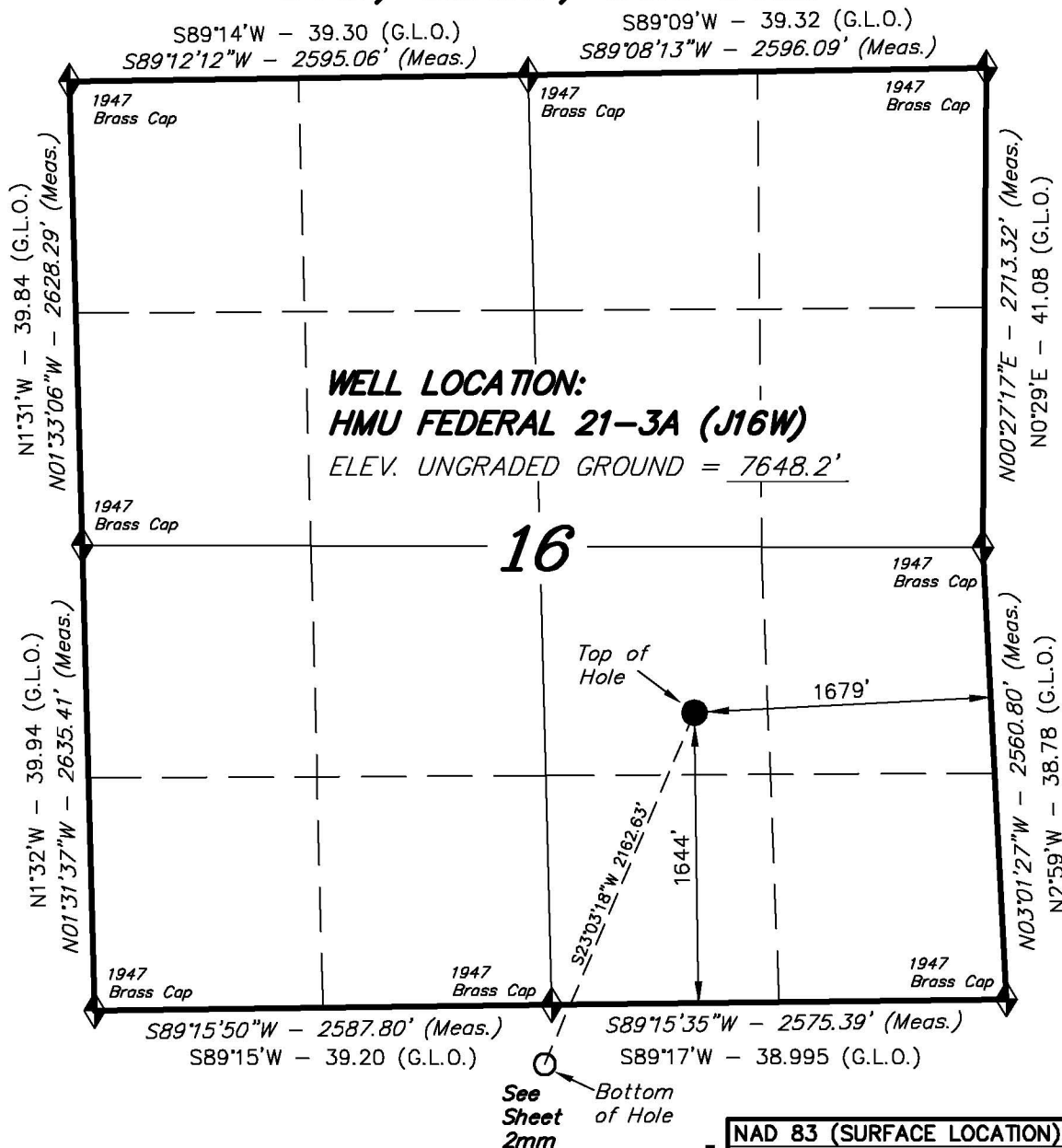


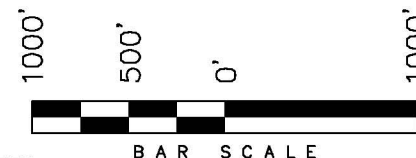
T7S, R93W, 6th P.M.



NAD 83 (SURFACE LOCATION)	
LATITUDE =	39°26'34.66" (39.442960)
LONGITUDE =	107°46'32.54" (107.775705)

ENCANA OIL & GAS (USA) INC

WELL LOCATION, HMU FEDERAL 21-3A (J16W), LOCATED AS SHOWN IN THE NW 1/4 SE 1/4 OF SECTION 16, T7S, R93W, 6th P.M. GARFIELD COUNTY, COLORADO.



NOTES:

1. Well footages are measured at right angles to the Section Lines.
2. Bearings are based on Global Positioning Satellite observations.
3. G.P.S. Operator: C.D. Slauch, (PDOP) = 1.9

IMPROVEMENT NOTE:

See addendum to legal plat (sheet 2o) for visible improvements within 400' of the proposed location.

THIS IS TO CERTIFY THAT THE ABOVE PLAT WAS PREPARED FROM FIELD NOTES OF ACTUAL SURVEYS MADE BY ME OR UNDER MY SUPERVISION. THE LOCATION HAS BEEN STAKED ON THE GROUND AS SHOWN ON THE PLAT, AND THAT THE SAME ARE TRUE AND CORRECT TO THE BEST OF MY KNOWLEDGE AND BELIEF.

[Signature]
 # 30125
 REGISTERED LAND SURVEYOR
 REGISTRATION No. 30125
 STATE OF COLORADO

TRI STATE LAND SURVEYING & CONSULTING

180 NORTH VERNAL AVE. - VERNAL, UTAH 84078
 (435) 781-2501

DATE SURVEYED: 06-02-10	SURVEYED BY: C.D.S.	SHEET 2m OF 11
DATE DRAWN: 06-22-10	DRAWN BY: F.T.M.	
REVISED: L.C.S. 10-13-10	SCALE: 1" = 1000'	

◆ = SECTION CORNERS LOCATED

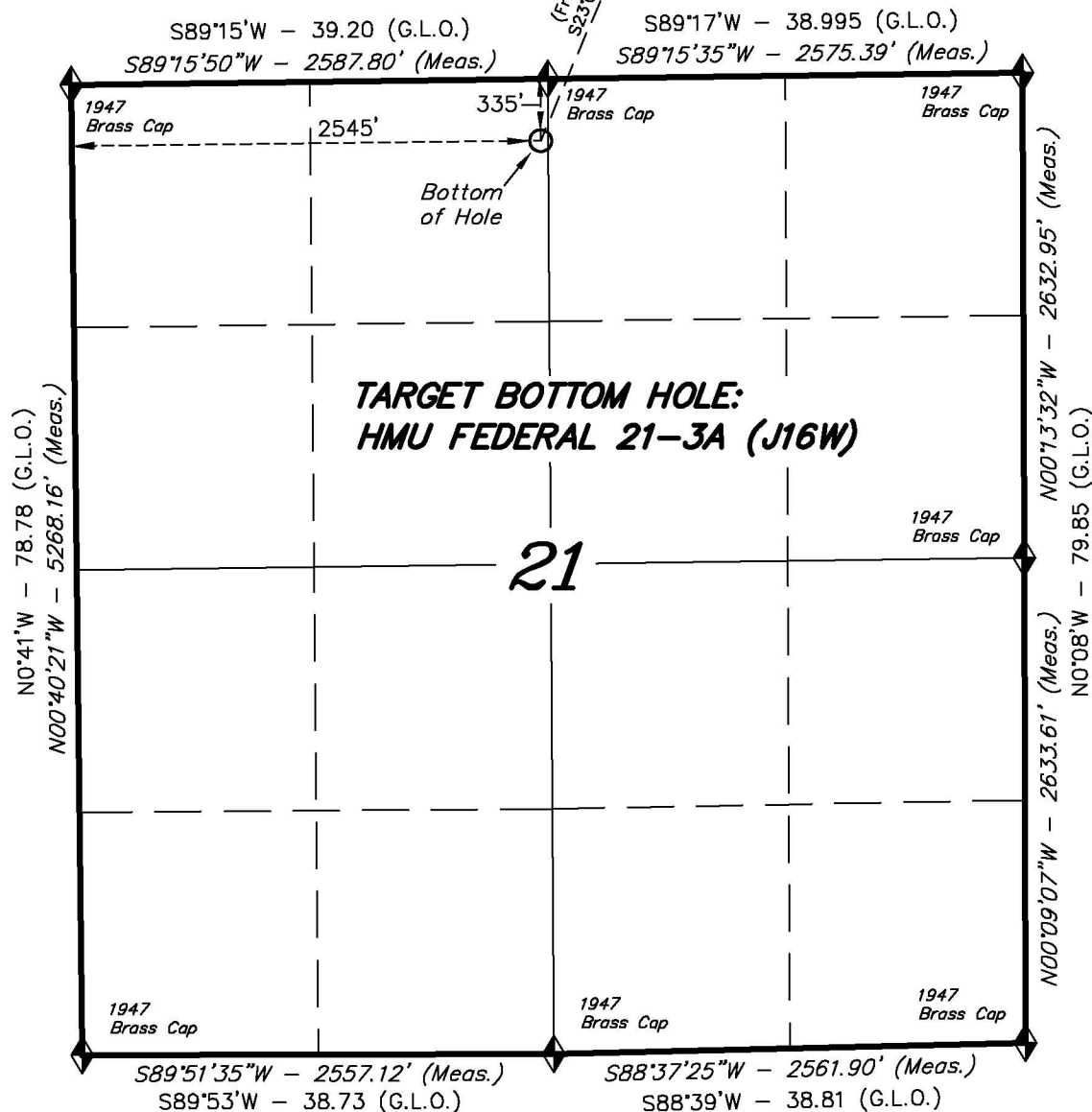
Basis of elevation is the Rifle 2 Triangulation Station. 39°31'53.80" N Lat. & 107°47'07.78" W Long. (NAD 83). Elevation = 5323.1' (NAVD88).

T7S, R93W, 6th P.M.

◆ = SECTION CORNERS LOCATED

Basis of elevation is the Rifle 2 Triangulation Station. 39°31'53.80" N Lat. & 107°47'07.78" W Long. (NAD 83). Elevation = 5323.1' (NAVD88).

See
Sheet
2m



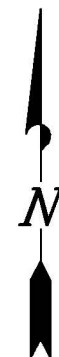
ENCANA OIL & GAS (USA) INC

TARGET BOTTOM HOLE, HMU FEDERAL 21-3A (J16W), LOCATED AS SHOWN IN THE NE 1/4 NW 1/4 OF SECTION 21, T7S, R93W, 6th P.M. GARFIELD COUNTY, COLORADO.



NOTES:

1. Well footages are measured at right angles to the Section Lines.
2. Bearings are based on Global Positioning Satellite observations.



THIS IS TO CERTIFY THAT THE ABOVE PLAT WAS PREPARED FROM FIELD NOTES OF ACTUAL SURVEYS MADE BY ME OR UNDER MY SUPERVISION. THE LOCATION HAS BEEN STAKED ON THE GROUND AS SHOWN ON THE PLAT, AND THAT THE SAME ARE TRUE AND CORRECT TO THE BEST OF MY KNOWLEDGE AND BELIEF.

REGISTERED LAND SURVEYOR
REGISTRATION No. 30125
STATE OF COLORADO

TRI STATE LAND SURVEYING & CONSULTING

180 NORTH VERNAL AVE. - VERNAL, UTAH 84078
(435) 781-2501

DATE SURVEYED: 06-02-10	SURVEYED BY: C.D.S.	SHEET 2mm OF 11
DATE DRAWN: 06-22-10	DRAWN BY: F.T.M.	
REVISED: L.C.S. 10-13-10	SCALE: 1" = 1000'	