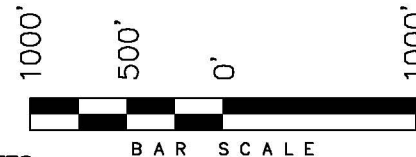


*T7S, R93W, 6th P.M.*

*ENCANA OIL & GAS (USA) INC*

WELL LOCATION, HMU FEDERAL 16-14D3 (J16W), LOCATED AS SHOWN IN THE NW 1/4 SE 1/4 OF SECTION 16, T7S, R93W, 6th P.M. GARFIELD COUNTY, COLORADO.



NOTES:

1. Well footages are measured at right angles to the Section Lines.
2. Bearings are based on Global Positioning Satellite observations.
3. G.P.S. Operator: C.D. Slauch, (PDOP) = 1.9

IMPROVEMENT NOTE:

See addendum to legal plat (sheet 2o)  
for visible improvements within 400' of  
the proposed location.

THIS IS TO CERTIFY THAT THE ABOVE PLAT WAS  
PREPARED FROM FIELD NOTES OF A SURVEY  
MADE BY ME OR UNDER MY SUPERVISION. THE LOCATION  
HAS BEEN STAKED ON THE GROUND AS SHOWN ON THE  
PLAT, AND THAT THE SAME ARE TRUE AND CORRECT  
TO THE BEST OF MY KNOWLEDGE AND BELIEF.

REGISTERED LAND SURVEYOR  
REGISTRATION No. 30125  
STATE OF COLORADO

**TRI STATE LAND SURVEYING & CONSULTING**

180 NORTH VERNAL AVE. - VERNAL, UTAH 84078  
(435) 781-2501

DATE SURVEYED:  
06-02-10

SURVEYED BY: C.D.S.

SHEET

DATE DRAWN:  
06-22-10

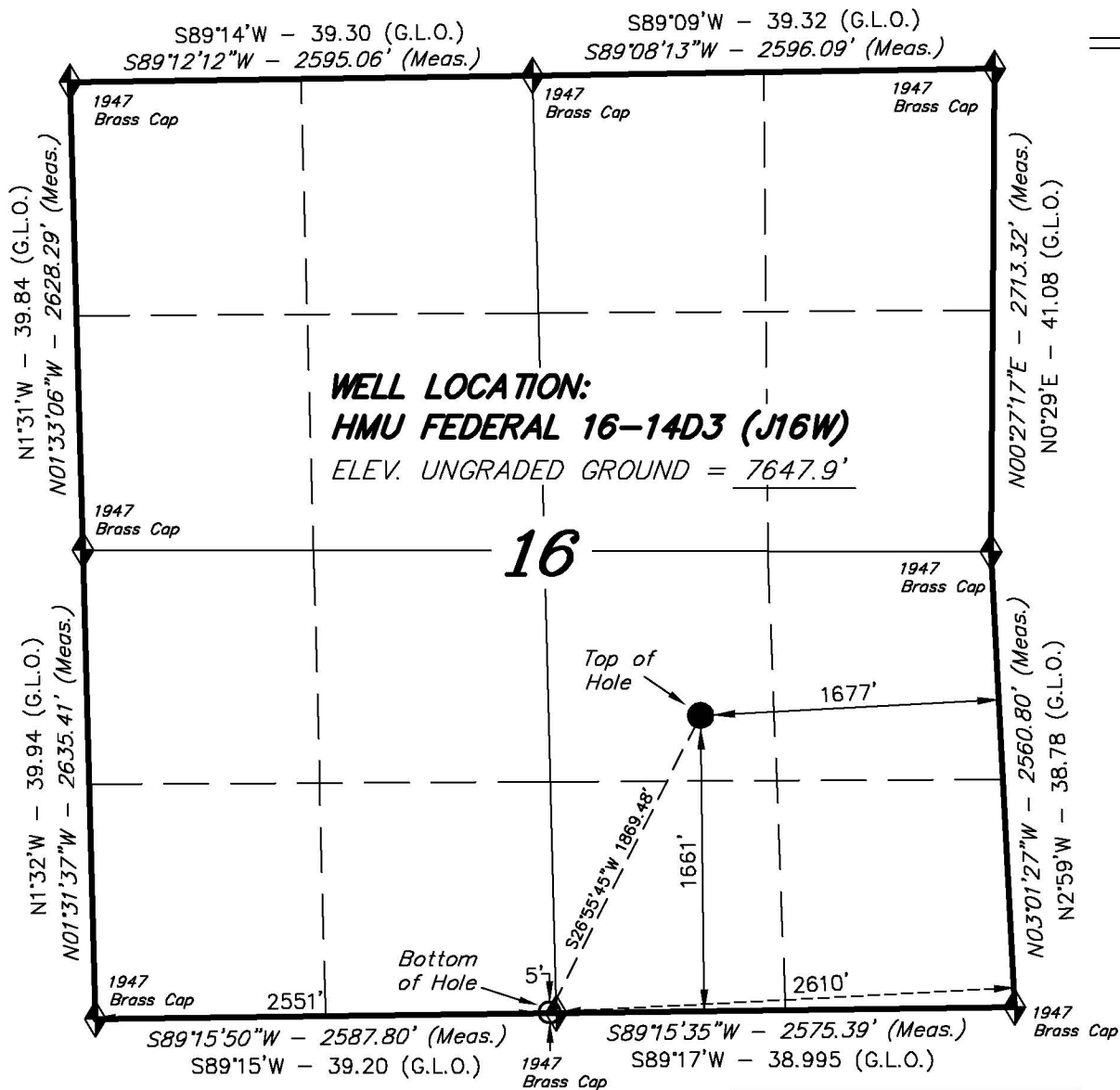
DRAWN BY: F.T.M.

2k

REVISED:  
L.C.S. 10-13-10

SCALE: 1" = 1000'

OF 11



**NAD 83 (SURFACE LOCATION)**

LATITUDE = 39°26'34.82"  
(39.443006)

LONGITUDE = 107°46'32.52"  
(107.775700)

 = SECTION CORNERS LOCATED

Basis of elevation is the Rifle 2 Triangulation Station. 39°31'53.80" N Lat. & 107°47'07.78" W Long. (NAD 83). Elevation = 5323.1' (NAVD88).